

# Converting Colors

Decimal(13077637)

Have a look what the booklet for  
Decimal(13077637) contains.

<b>Decimal(13077637)</b> .....	3
<i><b>Conversions</b></i> .....	4
<i><b>Details</b></i> .....	6
<i><b>Harmonies</b></i> .....	11
<i><b>Previews</b></i> .....	23
<i><b>Color Blindness Simulation</b></i> .....	26
<i><b>CSS Examples</b></i> .....	29

# **Color**

**Decimal(13077637)**

# Conversions

## Conversions Part 1

<b>Format</b>	<b>Color</b>
Hex	C78C85
RGB	199, 140, 133
RGB Percent	78%, 55%, 52%
CMY	0.2196, 0.4510, 0.4784
CMYK	0.00, 0.30, 0.33, 0.22
HSL	6°, 37%, 65%
HSV	6°, 33%, 78%
XYZ	37.1649, 32.5917, 26.5223
YIQ	156.8430, 37.4110, 10.3310

# Conversions

## Conversions Part 2

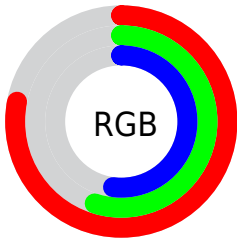
Format	Color
R <sub>Y</sub> B	199, 141, 133
Decimal	13077637
CIE Lab	63.83, 21.53, 12.73
CIE LCh	64, 25.016, 30.592
Yxy	32.5917, 0.3860, 0.3385
Android (android.graphics.Color)	4291267717 (0xFFC78C85)
YUV	156.8430, -11.7546, 36.9717
Hunter-Lab	57.0892, 16.2970, 12.4176

# Details

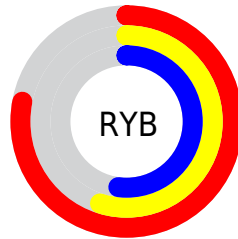
The Decimal color **13077637** is a light color, and the websafe version is hex **CC9999**. A complement of this color would be **8765639**, and the grayscale version is **10329501**.

A 20% lighter version of the original color is **16761530**, and **9394516** is the 20% darker color. If you saturate the color by 10%, you get **13073009**, and if you desaturate by 10%, it is **13082265**.

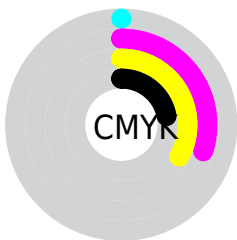
# Distribution



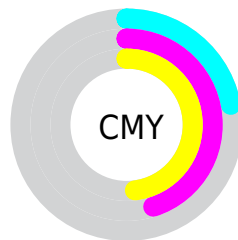
- Red (78%)
- Green (55%)
- Blue (52%)



- Red (78%)
- Yellow (55%)
- Blue (52%)



- Cyan (0%)
- Magenta (30%)
- Yellow (33%)
- Black (22%)



- Cyan (22%)
- Magenta (45%)
- Yellow (48%)

# Brightness & Saturation Gradients

These gradients show how the Decimal color 13077637 changes by changing the brightness by 10 percent. The first figure shows a shift by +10% for each color and the second figure -10%.

Similar to the brightness gradients but the following saturation gradients show a change of the Decimal color 13077637 by changing the saturation by 10% instead.



 13077637

 13077637

16777215

 11235948

 16761530

 9394516

 16768726

 7684668

 16776178

 5974823

 4265234

 2818048

 0

 13077637

 13077637

 13073009

 13082265

 13068381

 13086893

 13064009

 13091265

 13059381

 13095893

 13054754

 13100521

 13050126

 13105148

 13047040

 13107199

# Harmonies

## Analogous

The Analogous color harmony consists of three colors that are next to each other on the color wheel.



13011611



13077637



12423797

# Triad

The Triadic color harmony groups three colors that are evenly spaced from another and form a triangle on the color wheel.



13077637



7972228



8363463

# Complementary

The Complementary color scheme is a pair of colors which are on the opposite of each other on the color wheel.



13077637



8765639

# Split Complementary

Split-complementary colors differ from the complementary color scheme. The scheme consists of three colors, the original color and two neighbors of the complement color.



6529985



13077637



6465434

# Square

The Square scheme is like the rectangle color scheme, but the four colors are evenly spaced on the color wheel.



13077637



9609332



5744304



10458561

# Rectangle

The Rectangle color scheme consists of four colors that form a rectangle on the color wheel.



13077637



11638639



5744304



7708614

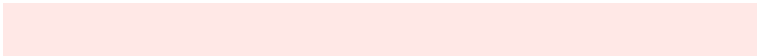


# Sweetspot

The Sweet Spot groups the original color and five complimentary colors.



13077637



16771302



13075904



8417904



0



8421504



# Same Dimension

The Same Dimension uses a secret algorithm to generate beautiful new colors.



13077637



16753817



13086085



6511450



10686720



2360320



# Inverse Universe

The Inverse Universe completely reimagines the original color for something new.



8765639



10089727



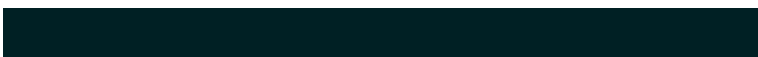
8757191



5923427



37539

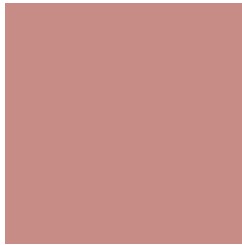


8228



# Previews

## White Background



This preview shows how the Decimal color 13077637 looks on a white background.

## Color Contrast Check

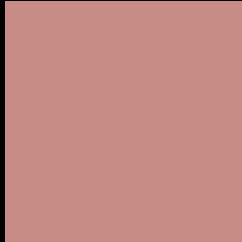
Large Text (above 18pt) WCAG AA × Fail

Any Text WCAG AA × Fail

Large Text (above 18pt) WCAG AAA × Fail

Any Text WCAG AAA × Fail

# Black Background



This preview shows how the Decimal color 13077637 looks on a black background.

## Color Contrast Check

Large Text (above 18pt) WCAG AA ✓ Pass

Any Text WCAG AA ✓ Pass

Large Text (above 18pt) WCAG AAA ✓ Pass

Any Text WCAG AAA ✓ Pass

If you want to check with other color combinations, try the [Color Contrast Checker](#).



## Decimal 13077637 Background



This preview shows how black text looks on a background with the Decimal color 13077637.



This preview shows how white text looks on a background with the Decimal color 13077637.

# Color Blindness Simulation

Color vision deficiency is a very complex topic, and I could not describe the different causes any better than Wikipedia does, so if you want to learn more, you should check out their [article about color blindness](#).


## Dichromacy



**Original Color**  
13077637

**Protanopia**  
10590860

**Deuteranopia**  
11703683



**Tritanopia**  
13208212

# Trichromacy



**Original Color**  
13077637

**Protanomaly**  
11507081

**Deuteranomaly**  
12227204

**Tritanomaly**  
13142927

# Monochromacy



**Original Color**  
13077637

**Achromatopsia**  
10329501

**Achromatomaly**  
11310996

# CSS Examples

## Text

The CSS property to change the color of the text to Decimal 13077637 is called "color". The color property can be set on classes, ids or directly on the HTML element.

This example shows how text in the color #C78C85 looks like.

```
.text, #text, p{  
    color:#C78C85  
}
```

If you want to add a text shadow in that color use the text-shadow property, you can generate a text shadow directly with our [CSS Text Shadow Generator](#).

Here you see how black text with a 4 pixel #C78C85 colored shadow looks like.

```
.shadow{ text-shadow: 4px 4px 2px #C78C85
}
```

## Border

The CSS property to change the border of an element to Decimal 13077637 is called "border". The border property can be set on classes, ids or directly on the HTML element.

This example shows the color as border, it can be applied via the CSS property "border" or "border-color".

```
.border, #border, table{ border:4px solid
#C78C85 }
```

If only the border color should be changed use the property `border-color`.

```
.border{ border-color:#C78C85 }
```

If you want to add a box shadow in that color use:

Here you see how a box with a 4 pixel #C78C85 colored shadow looks like.

```
.boxshadow{ -moz-box-shadow:4px 4px 4px  
4px #C78C85; -webkit-box-shadow:4px 4px  
4px 4px #C78C85; box-shadow:4px 4px 4px  
4px #C78C85 }
```

# Background

The CSS property to change the background color of an element to Decimal 13077637 is called "background". The background property can be set on classes, ids or directly on the HTML element.

```
.background, #background, body{  
background:#C78C85 }
```

If only the background color should be changed can be used:

```
.background{ background-color:#C78C85 }
```

This example shows the color as background, it is applied via the CSS property "background".

To optimize and compress your CSS code, you can use our [online CSS compressor and optimizer](#) based on csstidy. If you want to create a linear or radial gradient as background or border, check our [CSS Gradient Generator](#).



Hey! You found this booklet interesting? Support Converting Colors with the new Membership Option!

The pro membership hides all ads, plus gives you double the colors in the color bucket, and more awesome pro features!

**[Learn more, Memberships starting at \\$2.50/m!](#)**

**Follow me  
on Twitter!**

@ConvertingColor