

Converting Colors

Decimal(13078395)

Have a look what the booklet for
Decimal(13078395) contains.

Decimal(13078395)	3
<i>Conversions</i>	4
<i>Details</i>	6
<i>Harmonies</i>	11
<i>Previews</i>	23
<i>Color Blindness Simulation</i>	26
<i>CSS Examples</i>	29

Color

Decimal(13078395)

Conversions

Conversions Part 1

Format	Color
Hex	C78F7B
RGB	199, 143, 123
RGB Percent	78%, 56%, 48%
CMY	0.2196, 0.4392, 0.5176
CMYK	0.00, 0.28, 0.38, 0.22
HSL	16°, 40%, 63%
HSV	16°, 38%, 78%
XYZ	36.9508, 33.2171, 23.2029
YIQ	157.4640, 39.7960, 5.6520

Conversions

Conversions Part 2

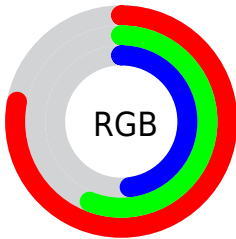
Format	Color
RYB	199, 150, 123
Decimal	13078395
CIELab	64.34, 18.64, 19.05
CIELCh	64, 26.655, 45.619
Yxy	33.2171, 0.3957, 0.3558
Android (android.graphics.Color)	4291268475 (0xFFC78F7B)
YUV	157.4640, -16.9908, 36.4271
Hunter-Lab	57.6343, 13.5809, 16.4745

Details

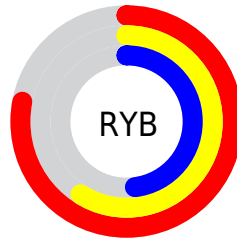
The Decimal color **13078395** is a light color, and the websafe version is hex **CC9999**. A complement of this color would be **8106951**, and the grayscale version is **10395294**.

A 20% lighter version of the original color is **16762288**, and **9395274** is the 20% darker color. If you saturate the color by 10%, you get **13074535**, and if you desaturate by 10%, it is **13082255**.

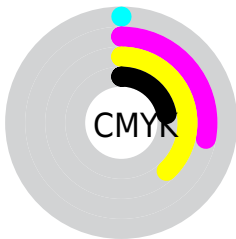
Distribution



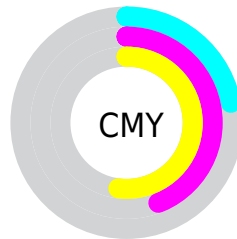
- Red (78%)
- Green (56%)
- Blue (48%)



- Red (78%)
- Yellow (59%)
- Blue (48%)



- Cyan (0%)
- Magenta (28%)
- Yellow (38%)
- Black (22%)



- Cyan (22%)
- Magenta (44%)
- Yellow (52%)

Brightness & Saturation Gradients

These gradients show how the Decimal color 13078395 changes by changing the brightness by 10 percent. The first figure shows a shift by +10% for each color and the second figure -10%.

Similar to the brightness gradients but the following saturation gradients show a change of the Decimal color 13078395 by changing the saturation by 10% instead.

 13078395

 13078395

16777215

 11236706

 16762288

 9395274

 16769483

 7619891

 16776935

 5910046

 4265990

 2687232

 0

 13078395

 13078395

 13074535

 13082255

 13070931

 13085859

 13067071

 13089719

 13063211

 13093579

 13059608

 13097183

 13055748

 13101042

 13054976

 13104895

 13107199

Harmonies

Analogous

The Analogous color harmony consists of three colors that are next to each other on the color wheel.



13405072



13078395



12031854

Triad

The Triadic color harmony groups three colors that are evenly spaced from another and form a triangle on the color wheel.



13078395



6989967



9476810

Complementary

The Complementary color scheme is a pair of colors which are on the opposite of each other on the color wheel.



13078395



8106951

Split Complementary

Split-complementary colors differ from the complementary color scheme. The scheme consists of three colors, the original color and two neighbors of the complement color.



7185097



13078395



5613992

Square

The Square scheme is like the rectangle color scheme, but the four colors are evenly spaced on the color wheel.



13078395



8758650



5613501



11506365

Rectangle

The Rectangle color scheme consists of four colors that form a rectangle on the color wheel.



13078395



11115629



5613501



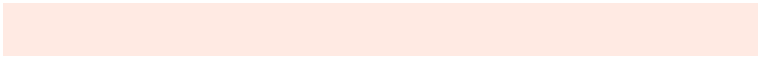
8691147

Sweetspot

The Sweet Spot groups the original color and five complimentary colors.



13078395



16771811



13073332



8418159



0



8421504

Same Dimension

The Same Dimension uses a secret algorithm to generate beautiful new colors.



13078395



16755082



13087867



6511706



10693376



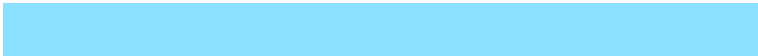
2361600

Inverse Universe

The Inverse Universe completely reimagines the original color for something new.



8106951



9101567



8097479



5923171



30883



6692

Previews

White Background



This preview shows how the Decimal color 13078395 looks on a white background.

Color Contrast Check

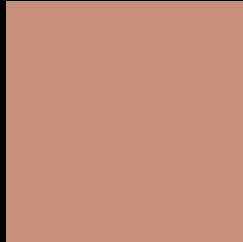
Large Text (above 18pt) WCAG AA × Fail

Any Text WCAG AA × Fail

Large Text (above 18pt) WCAG AAA × Fail

Any Text WCAG AAA × Fail

Black Background



This preview shows how the Decimal color 13078395 looks on a black background.

Color Contrast Check

Large Text (above 18pt) WCAG AA ✓ Pass

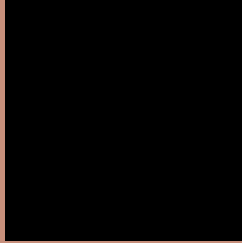
Any Text WCAG AA ✓ Pass

Large Text (above 18pt) WCAG AAA ✓ Pass

Any Text WCAG AAA ✓ Pass

If you want to check with other color combinations, try the [Color Contrast Checker](#).

Decimal 13078395 Background



This preview shows how black text looks on a background with the Decimal color 13078395.



This preview shows how white text looks on a background with the Decimal color 13078395.

Color Blindness Simulation

Color vision deficiency is a very complex topic, and I could not describe the different causes any better than Wikipedia does, so if you want to learn more, you should check out their [article about color blindness](#).

Dichromacy





Tritanopia
13274006

Trichromacy



Original Color
13078395

Protanomaly
11638655

Deuteranomaly
12424058

Tritanomaly
13208716

Monochromacy



Original Color
13078395

Achromatopsia
10329501

Achromatomaly
11311249

CSS Examples

Text

The CSS property to change the color of the text to Decimal 13078395 is called "color". The color property can be set on classes, ids or directly on the HTML element.

This example shows how text in the color #C78F7B looks like.

```
.text, #text, p{  
  color:#C78F7B  
}
```

If you want to add a text shadow in that color use the text-shadow property, you can generate a text shadow directly with our [CSS Text Shadow Generator](#).

Here you see how black text with a 4 pixel #C78F7B colored shadow looks like.

```
.shadow{ text-shadow: 4px 4px 2px #C78F7B  
}
```

Border

The CSS property to change the border of an element to Decimal 13078395 is called "border". The border property can be set on classes, ids or directly on the HTML element.

This example shows the color as border, it can be applied via the CSS property "border" or "border-color".

```
.border, #border, table{ border:4px solid  
#C78F7B }
```

If only the border color should be changed use the property `border-color`.

```
.border{ border-color:#C78F7B }
```

If you want to add a box shadow in that color use:

Here you see how a box with a 4 pixel #C78F7B colored shadow looks like.

```
.boxshadow{ -moz-box-shadow:4px 4px 4px  
4px #C78F7B; -webkit-box-shadow:4px 4px  
4px 4px #C78F7B; box-shadow:4px 4px 4px  
4px #C78F7B }
```

Background

The CSS property to change the background color of an element to Decimal 13078395 is called "background". The background property can be set on classes, ids or directly on the HTML element.

```
.background, #background, body{  
background:#C78F7B }
```

If only the background color should be changed can be used:

```
.background{ background-color:#C78F7B }
```

This example shows the color as background, it is applied via the CSS property "background".

To optimize and compress your CSS code, you can use our [online CSS compressor and optimizer](#) based on csstidy. If you want to create a linear or radial gradient as background or border, check our [CSS Gradient Generator](#).

Hey! You found this booklet interesting? Support Converting Colors with the new Membership Option!

The pro membership hides all ads, plus gives you double the colors in the color bucket, and more awesome pro features!

[Learn more, Memberships starting at \\$2.50/m!](#)

**Follow me
on Twitter!**

@ConvertingColor