

Converting Colors

Decimal(13078659)

Have a look what the booklet for
Decimal(13078659) contains.

Decimal(13078659)	3
<i>Conversions</i>	4
<i>Details</i>	6
<i>Harmonies</i>	11
<i>Previews</i>	23
<i>Color Blindness Simulation</i>	26
<i>CSS Examples</i>	29

Color

Decimal(13078659)

Conversions

Conversions Part 1

Format	Color
Hex	C79083
RGB	199, 144, 131
RGB Percent	78%, 56%, 51%
CMY	0.2196, 0.4353, 0.4863
CMYK	0.00, 0.28, 0.34, 0.22
HSL	11°, 38%, 65%
HSV	11°, 34%, 78%
XYZ	37.6232, 33.7273, 25.9998
YIQ	158.9630, 36.9530, 7.6170

Conversions

Conversions Part 2

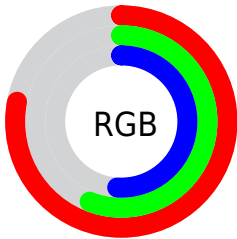
Format	Color
R _Y B	199, 147, 131
Decimal	13078659
CIE Lab	64.75, 19.08, 15.14
CIE LCh	65, 24.355, 38.427
Yxy	33.7273, 0.3865, 0.3465
Android (android.graphics.Color)	4291268739 (0xFFC79083)
YUV	158.9630, -13.7858, 35.1124
Hunter-Lab	58.0752, 14.0069, 14.1090

Details

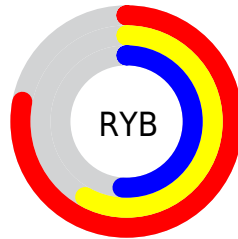
The Decimal color **13078659** is a light color, and the websafe version is hex **CC9999**. A complement of this color would be **8633031**, and the grayscale version is **10461087**.

A 20% lighter version of the original color is **16762552**, and **9395538** is the 20% darker color. If you saturate the color by 10%, you get **13074543**, and if you desaturate by 10%, it is **13082775**.

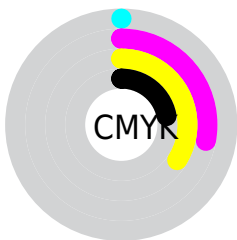
Distribution



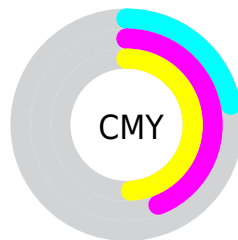
- Red (78%)
- Green (56%)
- Blue (51%)



- Red (78%)
- Yellow (58%)
- Blue (51%)



- Cyan (0%)
- Magenta (28%)
- Yellow (34%)
- Black (22%)



- Cyan (22%)
- Magenta (44%)
- Yellow (49%)

Brightness & Saturation Gradients

These gradients show how the Decimal color 13078659 changes by changing the brightness by 10 percent. The first figure shows a shift by +10% for each color and the second figure -10%.

Similar to the brightness gradients but the following saturation gradients show a change of the Decimal color 13078659 by changing the saturation by 10% instead.

 13078659

 13078659

16777215

 11236970

 16762552

 9395538

 16769748

 7685435

 16777200

 5975589

 4266256

 2752768

 0

 13078659

 13078659

 13074543

 13082775

 13070427

 13086891

 13066311

 13091007

 13062195

 13095123

 13058079

 13099239

 13053708

 13103610

 13051392

 13107199

Harmonies

Analogous

The Analogous color harmony consists of three colors that are next to each other on the color wheel.



13208984



13078659



12293749

Triad

The Triadic color harmony groups three colors that are evenly spaced from another and form a triangle on the color wheel.



13078659



7776396



9149896

Complementary

The Complementary color scheme is a pair of colors which are on the opposite of each other on the color wheel.



13078659



8633031

Split Complementary

Split-complementary colors differ from the complementary color scheme. The scheme consists of three colors, the original color and two neighbors of the complement color.



7251141



13078659



6465955

Square

The Square scheme is like the rectangle color scheme, but the four colors are evenly spaced on the color wheel.



13078659



9413754



6138039



11048383

Rectangle

The Rectangle color scheme consists of four colors that form a rectangle on the color wheel.



13078659



11443058



6138039



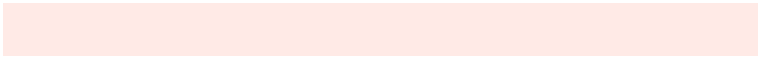
8429512

Sweetspot

The Sweet Spot groups the original color and five complimentary colors.



13078659



16771814



13075387



8418160



0



8421504

Same Dimension

The Same Dimension uses a secret algorithm to generate beautiful new colors.



13078659



16755350



13087107



6511450



10690304



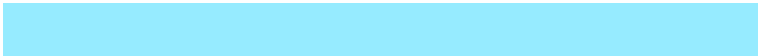
2361088

Inverse Universe

The Inverse Universe completely reimagines the original color for something new.



8633031



9890815



8624583



5923427



33955



7460

Previews

White Background



This preview shows how the Decimal color 13078659 looks on a white background.

Color Contrast Check

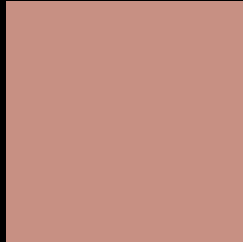
Large Text (above 18pt) WCAG AA × Fail

Any Text WCAG AA × Fail

Large Text (above 18pt) WCAG AAA × Fail

Any Text WCAG AAA × Fail

Black Background



This preview shows how the Decimal color 13078659 looks on a black background.

Color Contrast Check

Large Text (above 18pt) WCAG AA ✓ Pass

Any Text WCAG AA ✓ Pass

Large Text (above 18pt) WCAG AAA ✓ Pass

Any Text WCAG AAA ✓ Pass

If you want to check with other color combinations, try the [Color Contrast Checker](#).

Decimal 13078659 Background



This preview shows how black text looks on a background with the Decimal color 13078659.




This preview shows how white text looks on a background with the Decimal color 13078659.

Color Blindness Simulation

Color vision deficiency is a very complex topic, and I could not describe the different causes any better than Wikipedia does, so if you want to learn more, you should check out their [article about color blindness](#).

Dichromacy





Tritanopia
13208984

Trichromacy



Original Color
13078659

Protanomaly
11638919

Deuteranomaly
12358786

Tritanomaly
13143696

Monochromacy



Original Color
13078659

Achromatopsia
10461087

Achromatomaly
11442837

CSS Examples

Text

The CSS property to change the color of the text to Decimal 13078659 is called "color". The color property can be set on classes, ids or directly on the HTML element.

This example shows how text in the color #C79083 looks like.

```
.text, #text, p{  
  color:#C79083  
}
```

If you want to add a text shadow in that color use the text-shadow property, you can generate a text shadow directly with our [CSS Text Shadow Generator](#).

Here you see how black text with a 4 pixel #C79083 colored shadow looks like.

```
.shadow{ text-shadow: 4px 4px 2px #C79083
}
```

Border

The CSS property to change the border of an element to Decimal 13078659 is called "border". The border property can be set on classes, ids or directly on the HTML element.

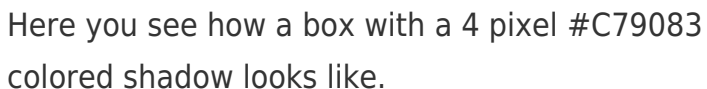
This example shows the color as border, it can be applied via the CSS property "border" or "border-color".

```
.border, #border, table{ border:4px solid
#C79083 }
```

If only the border color should be changed use the property `border-color`.

```
.border{ border-color:#C79083 }
```

If you want to add a box shadow in that color use:



Here you see how a box with a 4 pixel #C79083 colored shadow looks like.

```
.boxshadow{ -moz-box-shadow:4px 4px 4px  
4px #C79083; -webkit-box-shadow:4px 4px  
4px 4px #C79083; box-shadow:4px 4px 4px  
4px #C79083 }
```

Background

The CSS property to change the background color of an element to Decimal 13078659 is called "background". The background property can be set on classes, ids or directly on the HTML element.

```
.background, #background, body{  
background:#C79083 }
```

If only the background color should be changed can be used:

```
.background{ background-color:#C79083 }
```

This example shows the color as background, it is applied via the CSS property "background".

To optimize and compress your CSS code, you can use our [online CSS compressor and optimizer](#) based on csstidy. If you want to create a linear or radial gradient as background or border, check our [CSS Gradient Generator](#).

Hey! You found this booklet interesting? Support Converting Colors with the new Membership Option!

The pro membership hides all ads, plus gives you double the colors in the color bucket, and more awesome pro features!

[Learn more, Memberships starting at \\$2.50/m!](#)

**Follow me
on Twitter!**

@ConvertingColor