

Converting Colors

Decimal(13079692)

Have a look what the booklet for
Decimal(13079692) contains.

Decimal(13079692)	3
<i>Conversions</i>	4
<i>Details</i>	6
<i>Harmonies</i>	11
<i>Previews</i>	23
<i>Color Blindness Simulation</i>	26
<i>CSS Examples</i>	29

Color

Decimal(13079692)

Conversions

Conversions Part 1

Format	Color
Hex	C7948C
RGB	199, 148, 140
RGB Percent	78%, 58%, 55%
CMY	0.2196, 0.4196, 0.4510
CMYK	0.00, 0.26, 0.30, 0.22
HSL	8°, 35%, 66%
HSV	8°, 30%, 78%
XYZ	38.8767, 35.2154, 29.5592
YIQ	162.3370, 32.9640, 8.3240

Conversions

Conversions Part 2

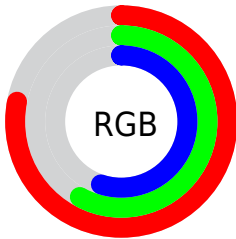
Format	Color
R _Y B	199, 149, 140
Decimal	13079692
CIE Lab	65.92, 18.07, 11.73
CIE LCh	66, 21.543, 33.000
Yxy	35.2154, 0.3751, 0.3397
Android (android.graphics.Color)	4291269772 (0xFFC7948C)
YUV	162.3370, -11.0121, 32.1535
Hunter-Lab	59.3425, 13.0902, 12.0068

Details

The Decimal color **13079692** is a light color, and the websafe version is hex **CC9999**. A complement of this color would be **9224135**, and the grayscale version is **10658466**.

A 20% lighter version of the original color is **16763586**, and **9462106** is the 20% darker color. If you saturate the color by 10%, you get **13075320**, and if you desaturate by 10%, it is **13084064**.

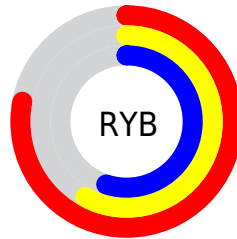
Distribution



Red (78%)

Green (58%)

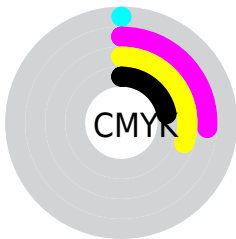
Blue (55%)



Red (78%)

Yellow (58%)

Blue (55%)

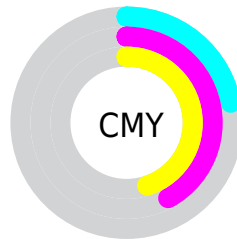


Cyan (0%)

Magenta (26%)

Yellow (30%)

Black (22%)



Cyan (22%)

Magenta (42%)

Yellow (45%)

Brightness & Saturation Gradients

These gradients show how the Decimal color 13079692 changes by changing the brightness by 10 percent. The first figure shows a shift by +10% for each color and the second figure -10%.

Similar to the brightness gradients but the following saturation gradients show a change of the Decimal color 13079692 by changing the saturation by 10% instead.

 13079692

 13079692

16777215

 11238003

 16763586

 9462106

 16770781

 7686467

 16777210

 6042156

 4398104

 2885120

 65536

 0

 13079692

 13079692

 13075320

 13084064

 13070948

 13088436

 13066320

 13093064

 13061948

 13097436

 13057577

 13101808

 13053205

 13106175

 13048833

 13107199

 13048576

Harmonies

Analogous

The Analogous color harmony consists of three colors that are next to each other on the color wheel.



13013663



13079692



12491134

Triad

The Triadic color harmony groups three colors that are evenly spaced from another and form a triangle on the color wheel.



13079692



8563086



9216454

Complementary

The Complementary color scheme is a pair of colors which are on the opposite of each other on the color wheel.



13079692



9224135

Split Complementary

Split-complementary colors differ from the complementary color scheme. The scheme consists of three colors, the original color and two neighbors of the complement color.



7645122



13079692



7383969

Square

The Square scheme is like the rectangle color scheme, but the four colors are evenly spaced on the color wheel.



13079692



10003839



6924980



10918849

Rectangle

The Rectangle color scheme consists of four colors that form a rectangle on the color wheel.



13079692



11771258



6924980



8627142

Sweetspot

The Sweet Spot groups the original color and five complimentary colors.



13079692



16772072



13077695



8418161



0



8421504

Same Dimension

The Same Dimension uses a secret algorithm to generate beautiful new colors.



13079692



16756899



13087116



6511450



10688000



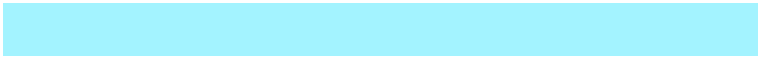
2360576

Inverse Universe

The Inverse Universe completely reimagines the original color for something new.



9224135



10744831



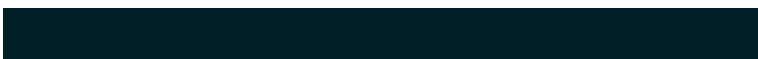
9216711



5923427



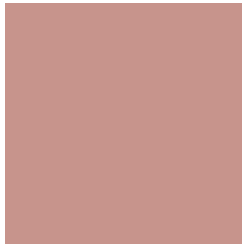
36259



7972

Previews

White Background



This preview shows how the Decimal color 13079692 looks on a white background.

Color Contrast Check

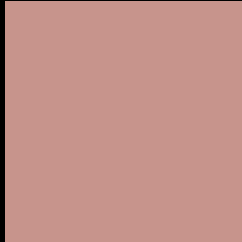
Large Text (above 18pt) WCAG AA × Fail

Any Text WCAG AA × Fail

Large Text (above 18pt) WCAG AAA × Fail

Any Text WCAG AAA × Fail

Black Background



This preview shows how the Decimal color 13079692 looks on a black background.

Color Contrast Check

Large Text (above 18pt) WCAG AA ✓ Pass

Any Text WCAG AA ✓ Pass

Large Text (above 18pt) WCAG AAA ✓ Pass

Any Text WCAG AAA ✓ Pass

If you want to check with other color combinations, try the [Color Contrast Checker](#).

Decimal 13079692 Background



This preview shows how black text looks on a background with the Decimal color 13079692.



This preview shows how white text looks on a background with the Decimal color 13079692.

Color Blindness Simulation

Color vision deficiency is a very complex topic, and I could not describe the different causes any better than Wikipedia does, so if you want to learn more, you should check out their [article about color blindness](#).

Dichromacy





Tritanopia
13210013

Trichromacy



Original Color
13079692

Protanomaly
11771024

Deuteranomaly
12425355

Tritanomaly
13144727

Monochromacy



Original Color
13079692

Achromatopsia
10658466

Achromatomaly
11509146

CSS Examples

Text

The CSS property to change the color of the text to Decimal 13079692 is called "color". The color property can be set on classes, ids or directly on the HTML element.

This example shows how text in the color #C7948C looks like.

```
.text, #text, p{  
  color:#C7948C  
}
```

If you want to add a text shadow in that color use the text-shadow property, you can generate a text shadow directly with our [CSS Text Shadow Generator](#).

Here you see how black text with a 4 pixel #C7948C colored shadow looks like.

```
.shadow{ text-shadow: 4px 4px 2px #C7948C
}
```

Border

The CSS property to change the border of an element to Decimal 13079692 is called "border". The border property can be set on classes, ids or directly on the HTML element.

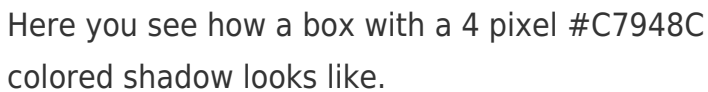
This example shows the color as border, it can be applied via the CSS property "border" or "border-color".

```
.border, #border, table{ border:4px solid
#C7948C }
```

If only the border color should be changed use the property `border-color`.

```
.border{ border-color:#C7948C }
```

If you want to add a box shadow in that color use:



Here you see how a box with a 4 pixel #C7948C colored shadow looks like.

```
.boxshadow{ -moz-box-shadow:4px 4px 4px  
4px #C7948C; -webkit-box-shadow:4px 4px  
4px 4px #C7948C; box-shadow:4px 4px 4px  
4px #C7948C }
```

Background

The CSS property to change the background color of an element to Decimal 13079692 is called "background". The background property can be set on classes, ids or directly on the HTML element.

```
.background, #background, body{  
background:#C7948C }
```

If only the background color should be changed can be used:

```
.background{ background-color:#C7948C }
```

This example shows the color as background, it is applied via the CSS property "background".

To optimize and compress your CSS code, you can use our [online CSS compressor and optimizer](#) based on csstidy. If you want to create a linear or radial gradient as background or border, check our [CSS Gradient Generator](#).

Hey! You found this booklet interesting? Support Converting Colors with the new Membership Option!

The pro membership hides all ads, plus gives you double the colors in the color bucket, and more awesome pro features!

[Learn more, Memberships starting at \\$2.50/m!](#)

**Follow me
on Twitter!**

@ConvertingColor