

# Converting Colors

Decimal(13081212)

Have a look what the booklet for  
Decimal(13081212) contains.

<b>Decimal(13081212)</b> .....	3
<i><b>Conversions</b></i> .....	4
<i><b>Details</b></i> .....	6
<i><b>Harmonies</b></i> .....	11
<i><b>Previews</b></i> .....	23
<i><b>Color Blindness Simulation</b></i> .....	26
<i><b>CSS Examples</b></i> .....	29

# **Color**

**Decimal(13081212)**

# Conversions

## Conversions Part 1

<b>Format</b>	<b>Color</b>
Hex	C79A7C
RGB	199, 154, 124
RGB Percent	78%, 60%, 49%
CMY	0.2196, 0.3961, 0.5137
CMYK	0.00, 0.23, 0.38, 0.22
HSL	24°, 40%, 63%
HSV	24°, 38%, 78%
XYZ	38.7469, 36.7086, 24.1121
YIQ	164.0350, 36.4500, 0.2100

# Conversions

## Conversions Part 2

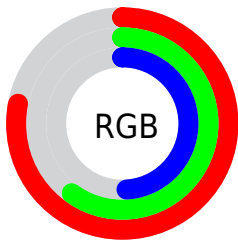
Format	Color
R <sub>Y</sub> B	199, 174, 124
Decimal	13081212
CIE Lab	67.06, 12.73, 22.20
CIE LCh	67, 25.594, 60.167
Yxy	36.7086, 0.3892, 0.3687
Android (android.graphics.Color)	4291271292 (0xFFC79A7C)
YUV	164.0350, -19.7373, 30.6643
Hunter-Lab	60.5876, 8.1258, 18.8156

# Details

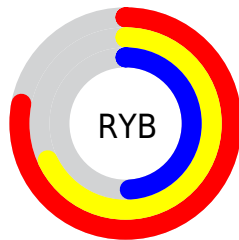
The Decimal color **13081212** is a light color, and the websafe version is hex **CC9966**. A complement of this color would be **8169927**, and the grayscale version is **10790052**.

A 20% lighter version of the original color is **16765105**, and **9398091** is the 20% darker color. If you saturate the color by 10%, you get **13078120**, and if you desaturate by 10%, it is **13084304**.

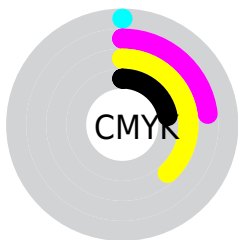
# Distribution



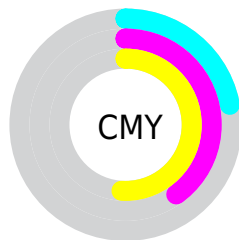
- Red (78%)
- Green (60%)
- Blue (49%)



- Red (78%)
- Yellow (68%)
- Blue (49%)



- Cyan (0%)
- Magenta (23%)
- Yellow (38%)
- Black (22%)



- Cyan (22%)
- Magenta (40%)
- Yellow (51%)

# Brightness & Saturation Gradients

These gradients show how the Decimal color 13081212 changes by changing the brightness by 10 percent. The first figure shows a shift by +10% for each color and the second figure -10%.

Similar to the brightness gradients but the following saturation gradients show a change of the Decimal color 13081212 by changing the saturation by 10% instead.



 13081212

 13081212

16777215

 11239523

 16765105

 9398091

 16772556

 7687988

 16777192

 5978142

 4334087

 2756096

 0

 13081212

 13081212

 13078120

 13084304

 13075028

 13087396

 13071936

 13090488

 13068844

 13093580

 13065753

 13096672

 13062661

 13099763

 13062144

 13102847

 13105919

 13107199

# Harmonies

## Analogous

The Analogous color harmony consists of three colors that are next to each other on the color wheel.



13735053



13081212



11838069

# Triad

The Triadic color harmony groups three colors that are evenly spaced from another and form a triangle on the color wheel.



13081212



6926499



10984907

# Complementary

The Complementary color scheme is a pair of colors which are on the opposite of each other on the color wheel.



13081212



8169927

# Split Complementary

Split-complementary colors differ from the complementary color scheme. The scheme consists of three colors, the original color and two neighbors of the complement color.



8889809



13081212



6205369

# Square

The Square scheme is like the rectangle color scheme, but the four colors are evenly spaced on the color wheel.



13081212



8498828



6991050



12687034

# Rectangle

The Rectangle color scheme consists of four colors that form a rectangle on the color wheel.



13081212



10790776



6991050



10264782

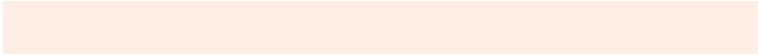


# Sweetspot

The Sweet Spot groups the original color and five complimentary colors.



13081212



16772835



13073577



8418927



0



8421504



# Same Dimension

The Same Dimension uses a secret algorithm to generate beautiful new colors.



13081212



16759436



13090428



6511962



10699008



2362880

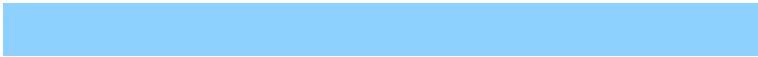


# Inverse Universe

The Inverse Universe completely reimagines the original color for something new.



8169927



9228799



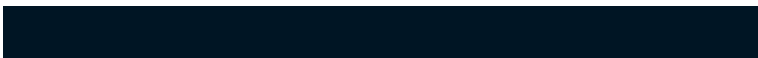
8160455



5922659



25251



5412



# Previews

## White Background



This preview shows how the Decimal color 13081212 looks on a white background.

## Color Contrast Check

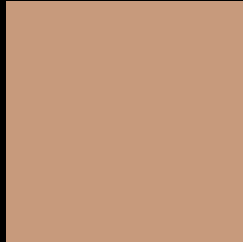
Large Text (above 18pt) WCAG AA × Fail

Any Text WCAG AA × Fail

Large Text (above 18pt) WCAG AAA × Fail

Any Text WCAG AAA × Fail

# Black Background



This preview shows how the Decimal color 13081212 looks on a black background.

## Color Contrast Check

Large Text (above 18pt) WCAG AA ✓ Pass

Any Text WCAG AA ✓ Pass

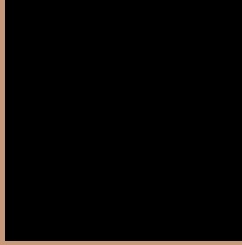
Large Text (above 18pt) WCAG AAA ✓ Pass

Any Text WCAG AAA ✓ Pass

If you want to check with other color combinations, try the [Color Contrast Checker](#).



## Decimal 13081212 Background



This preview shows how black text looks on a background with the Decimal color 13081212.



This preview shows how white text looks on a background with the Decimal color 13081212.

# Color Blindness Simulation

Color vision deficiency is a very complex topic, and I could not describe the different causes any better than Wikipedia does, so if you want to learn more, you should check out their [article about color blindness](#).


## Dichromacy



**Original Color**  
13081212

**Protanopia**  
11445120

**Deuteranopia**  
12623227



**Tritanopia**  
13342112

# Trichromacy



**Original Color**  
13081212

**Protanomaly**  
12034175

**Deuteranomaly**  
12819579

**Tritanomaly**  
13277075

# Monochromacy



**Original Color**  
13081212

**Achromatopsia**  
10790052

**Achromatomaly**  
11640981

# CSS Examples

## Text

The CSS property to change the color of the text to Decimal 13081212 is called "color". The color property can be set on classes, ids or directly on the HTML element.

This example shows how text in the color #C79A7C looks like.

```
.text, #text, p{  
    color:#C79A7C  
}
```

If you want to add a text shadow in that color use the text-shadow property, you can generate a text shadow directly with our [CSS Text Shadow Generator](#).

Here you see how black text with a 4 pixel #C79A7C colored shadow looks like.

```
.shadow{ text-shadow: 4px 4px 2px #C79A7C
}
```

## Border

The CSS property to change the border of an element to Decimal 13081212 is called "border". The border property can be set on classes, ids or directly on the HTML element.

This example shows the color as border, it can be applied via the CSS property "border" or "border-color".

```
.border, #border, table{ border:4px solid
#C79A7C }
```

If only the border color should be changed use the property `border-color`.

```
.border{ border-color:#C79A7C }
```

If you want to add a box shadow in that color use:

Here you see how a box with a 4 pixel #C79A7C colored shadow looks like.

```
.boxshadow{ -moz-box-shadow:4px 4px 4px  
4px #C79A7C; -webkit-box-shadow:4px 4px  
4px 4px #C79A7C; box-shadow:4px 4px 4px  
4px #C79A7C }
```

# Background

The CSS property to change the background color of an element to Decimal 13081212 is called "background". The background property can be set on classes, ids or directly on the HTML element.

```
.background, #background, body{  
background:#C79A7C }
```

If only the background color should be changed can be used:

```
.background{ background-color:#C79A7C }
```

This example shows the color as background, it is applied via the CSS property "background".

To optimize and compress your CSS code, you can use our [online CSS compressor and optimizer](#) based on csstidy. If you want to create a linear or radial gradient as background or border, check our [CSS Gradient Generator](#).



Hey! You found this booklet interesting? Support Converting Colors with the new Membership Option!

The pro membership hides all ads, plus gives you double the colors in the color bucket, and more awesome pro features!

**[Learn more, Memberships starting at \\$2.50/m!](#)**

**Follow me  
on Twitter!**

@ConvertingColor