

Converting Colors

Decimal(13081470)

Have a look what the booklet for
Decimal(13081470) contains.

Decimal(13081470)	3
<i>Conversions</i>	4
<i>Details</i>	6
<i>Harmonies</i>	11
<i>Previews</i>	23
<i>Color Blindness Simulation</i>	26
<i>CSS Examples</i>	29

Color

Decimal(13081470)

Conversions

Conversions Part 1

Format	Color
Hex	C79B7E
RGB	199, 155, 126
RGB Percent	78%, 61%, 49%
CMY	0.2196, 0.3922, 0.5059
CMYK	0.00, 0.22, 0.37, 0.22
HSL	24°, 39%, 64%
HSV	24°, 37%, 78%
XYZ	39.0404, 37.0912, 24.8403
YIQ	164.8500, 35.5330, 0.3090

Conversions

Conversions Part 2

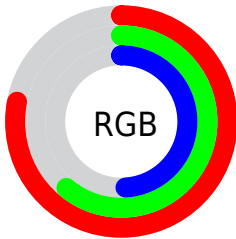
Format	Color
RYB	199, 174, 126
Decimal	13081470
CIELab	67.35, 12.43, 21.49
CIELCh	67, 24.826, 59.964
Yxy	37.0912, 0.3866, 0.3673
Android (android.graphics.Color)	4291271550 (0xFFC79B7E)
YUV	164.8500, -19.1530, 29.9496
Hunter-Lab	60.9025, 7.8447, 18.4491

Details

The Decimal color **13081470** is a light color, and the websafe version is hex **CC9966**. A complement of this color would be **8301255**, and the grayscale version is **10855845**.

A 20% lighter version of the original color is **16765363**, and **9463885** is the 20% darker color. If you saturate the color by 10%, you get **13078378**, and if you desaturate by 10%, it is **13084562**.

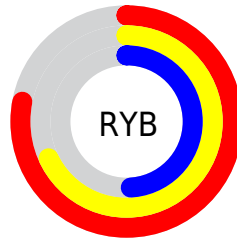
Distribution



Red (78%)

Green (61%)

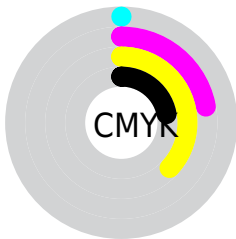
Blue (49%)



Red (78%)

Yellow (68%)

Blue (49%)

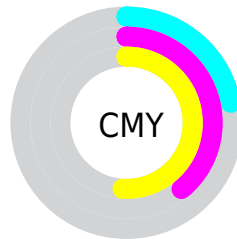


Cyan (0%)

Magenta (22%)

Yellow (37%)

Black (22%)



Cyan (22%)

Magenta (39%)

Yellow (51%)

Brightness & Saturation Gradients

These gradients show how the Decimal color 13081470 changes by changing the brightness by 10 percent. The first figure shows a shift by +10% for each color and the second figure -10%.

Similar to the brightness gradients but the following saturation gradients show a change of the Decimal color 13081470 by changing the saturation by 10% instead.

 13081470

 13081470

16777215

 11239781

 16765363

 9463885

 16772814

 7688246

 16777195

 5978400

 4334346

 2756352

 196608

 0

 13081470

 13081470

 13078378

 13084562

 13075286

 13087654

 13072194

 13090746

 13069102

 13093838

 13066011

 13096930

 13062919

 13100021

 13061888

 13103103

 13106175

 13107199

Harmonies

Analogous

The Analogous color harmony consists of three colors that are next to each other on the color wheel.



13735311



13081470



11838071

Triad

The Triadic color harmony groups three colors that are evenly spaced from another and form a triangle on the color wheel.



13081470



7123363



10985163

Complementary

The Complementary color scheme is a pair of colors which are on the opposite of each other on the color wheel.



13081470



8301255

Split Complementary

Split-complementary colors differ from the complementary color scheme. The scheme consists of three colors, the original color and two neighbors of the complement color.



8955600



13081470



6467769

Square

The Square scheme is like the rectangle color scheme, but the four colors are evenly spaced on the color wheel.



13081470



8629901



7187658



12687291

Rectangle

The Rectangle color scheme consists of four colors that form a rectangle on the color wheel.



13081470



10856314



7187658



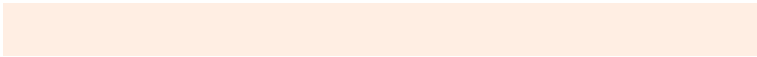
10330574

Sweetspot

The Sweet Spot groups the original color and five complimentary colors.



13081470



16772835



13074091



8418927



0



8421504

Same Dimension

The Same Dimension uses a secret algorithm to generate beautiful new colors.



13081470



16759695



13090430



6511962



10699008



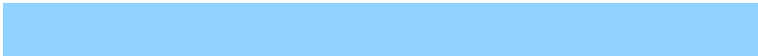
2362880

Inverse Universe

The Inverse Universe completely reimagines the original color for something new.



8301255



9425663



8292295



5922659



25251



5668

Previews

White Background



This preview shows how the Decimal color 13081470 looks on a white background.

Color Contrast Check

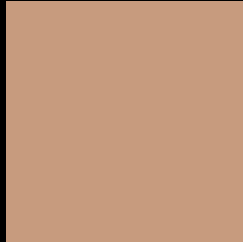
Large Text (above 18pt) WCAG AA × Fail

Any Text WCAG AA × Fail

Large Text (above 18pt) WCAG AAA × Fail

Any Text WCAG AAA × Fail

Black Background



This preview shows how the Decimal color 13081470 looks on a black background.

Color Contrast Check

Large Text (above 18pt) WCAG AA ✓ Pass

Any Text WCAG AA ✓ Pass

Large Text (above 18pt) WCAG AAA ✓ Pass

Any Text WCAG AAA ✓ Pass

If you want to check with other color combinations, try the [Color Contrast Checker](#).

Decimal 13081470 Background



This preview shows how black text looks on a background with the Decimal color 13081470.



This preview shows how white text looks on a background with the Decimal color 13081470.

Color Blindness Simulation

Color vision deficiency is a very complex topic, and I could not describe the different causes any better than Wikipedia does, so if you want to learn more, you should check out their [article about color blindness](#).


Dichromacy



Original Color
13081470

Protanopia
11510914

Deuteranopia
12689022



Tritanopia
13342370

Trichromacy



Original Color
13081470

Protanomaly
12099969

Deuteranomaly
12819838

Tritanomaly
13277333

Monochromacy



Original Color
13081470

Achromatopsia
10855845

Achromatomaly
11641239

CSS Examples

Text

The CSS property to change the color of the text to Decimal 13081470 is called "color". The color property can be set on classes, ids or directly on the HTML element.

This example shows how text in the color #C79B7E looks like.

```
.text, #text, p{  
    color:#C79B7E  
}
```

If you want to add a text shadow in that color use the text-shadow property, you can generate a text shadow directly with our [CSS Text Shadow Generator](#).

Here you see how black text with a 4 pixel #C79B7E colored shadow looks like.

```
.shadow{ text-shadow: 4px 4px 2px #C79B7E
}
```

Border

The CSS property to change the border of an element to Decimal 13081470 is called "border". The border property can be set on classes, ids or directly on the HTML element.

This example shows the color as border, it can be applied via the CSS property "border" or "border-color".

```
.border, #border, table{ border:4px solid
#C79B7E }
```

If only the border color should be changed use the property `border-color`.

```
.border{ border-color:#C79B7E }
```

If you want to add a box shadow in that color use:

Here you see how a box with a 4 pixel #C79B7E colored shadow looks like.

```
.boxshadow{ -moz-box-shadow:4px 4px 4px  
4px #C79B7E; -webkit-box-shadow:4px 4px  
4px 4px #C79B7E; box-shadow:4px 4px 4px  
4px #C79B7E }
```

Background

The CSS property to change the background color of an element to Decimal 13081470 is called "background". The background property can be set on classes, ids or directly on the HTML element.

```
.background, #background, body{  
background:#C79B7E }
```

If only the background color should be changed can be used:

```
.background{ background-color:#C79B7E }
```

This example shows the color as background, it is applied via the CSS property "background".

To optimize and compress your CSS code, you can use our [online CSS compressor and optimizer](#) based on csstidy. If you want to create a linear or radial gradient as background or border, check our [CSS Gradient Generator](#).

Hey! You found this booklet interesting? Support Converting Colors with the new Membership Option!

The pro membership hides all ads, plus gives you double the colors in the color bucket, and more awesome pro features!

[Learn more, Memberships starting at \\$2.50/m!](#)

**Follow me
on Twitter!**

@ConvertingColor