

Converting Colors

Decimal(13082265)

Have a look what the booklet for
Decimal(13082265) contains.

Decimal(13082265)	3
<i>Conversions</i>	4
<i>Details</i>	6
<i>Harmonies</i>	11
<i>Previews</i>	23
<i>Color Blindness Simulation</i>	26
<i>CSS Examples</i>	29

Color

Decimal(13082265)

Conversions

Conversions Part 1

Format	Color
Hex	C79E99
RGB	199, 158, 153
RGB Percent	78%, 62%, 60%
CMY	0.2196, 0.3804, 0.4000
CMYK	0.00, 0.21, 0.23, 0.22
HSL	7°, 29%, 69%
HSV	7°, 23%, 78%
XYZ	41.5298, 38.8957, 35.4558
YIQ	169.6890, 26.0410, 7.1370

Conversions

Conversions Part 2

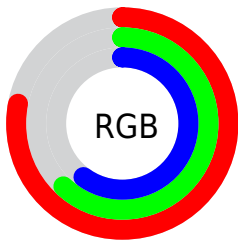
Format	Color
R_{YB}	199, 159, 153
Decimal	13082265
CIE _{Lab}	68.68, 14.43, 8.40
CIE _{LCh}	69, 16.695, 30.194
Yxy	38.8957, 0.3584, 0.3357
Android (android.graphics.Color)	4291272345 (0xFFC79E99)
YUV	169.6890, -8.2277, 25.7057
Hunter-Lab	62.3665, 9.7219, 9.9497

Details

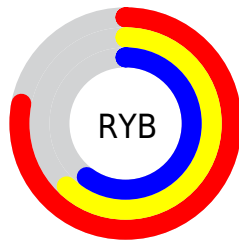
The Decimal color **13082265** is a light color, and the websafe version is hex **CC9999**. A complement of this color would be **10076871**, and the grayscale version is **11184810**.

A 20% lighter version of the original color is **16766415**, and **9464678** is the 20% darker color. If you saturate the color by 10%, you get **13077637**, and if you desaturate by 10%, it is **13086893**.

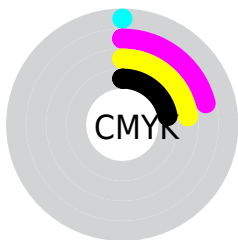
Distribution



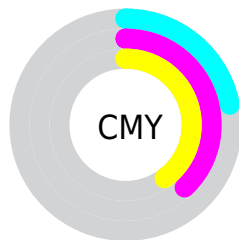
- Red (78%)
- Green (62%)
- Blue (60%)



- Red (78%)
- Yellow (62%)
- Blue (60%)



- Cyan (0%)
- Magenta (21%)
- Yellow (23%)
- Black (22%)



- Cyan (22%)
- Magenta (38%)
- Yellow (40%)

Brightness & Saturation Gradients

These gradients show how the Decimal color 13082265 changes by changing the brightness by 10 percent. The first figure shows a shift by +10% for each color and the second figure -10%.

Similar to the brightness gradients but the following saturation gradients show a change of the Decimal color 13082265 by changing the saturation by 10% instead.

 13082265

 13082265

16777215

 11240575

 16766415

 9464678


 16773612

 7754318

 6110007

 4465954

 2953228

 1310720

 0

 13082265

 13082265

 13077637

 13086893

 13073265

 13091265

 13068637

 13095893

 13064009

 13100521

 13059382

 13105149

 13055010

 13107199

 13050382

 13047296

Harmonies

Analogous

The Analogous color harmony consists of three colors that are next to each other on the color wheel.



12950952



13082265



12624526

Triad

The Triadic color harmony groups three colors that are evenly spaced from another and form a triangle on the color wheel.



13082265



9613208



9939397

Complementary

The Complementary color scheme is a pair of colors which are on the opposite of each other on the color wheel.



13082265



10076871

Split Complementary

Split-complementary colors differ from the complementary color scheme. The scheme consists of three colors, the original color and two neighbors of the complement color.



8826305



13082265



8695975

Square

The Square scheme is like the rectangle color scheme, but the four colors are evenly spaced on the color wheel.



13082265



10726285



8368310



11183298

Rectangle

The Rectangle color scheme consists of four colors that form a rectangle on the color wheel.



13082265



12101002



8368310



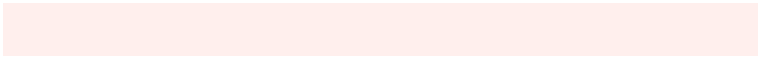
9546437

Sweetspot

The Sweet Spot groups the original color and five complimentary colors.



13082265



16773101



13081026



8418933



0



8421504

Same Dimension

The Same Dimension uses a secret algorithm to generate beautiful new colors.



13082265



16760760



13088153



6511450



10686976



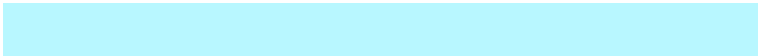
2360320

Inverse Universe

The Inverse Universe completely reimagines the original color for something new.



10076871



12122111



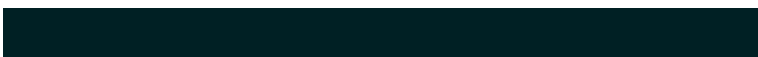
10070983



5923427



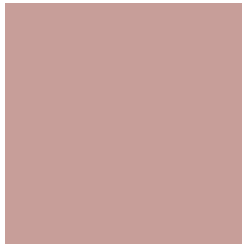
37283



8228

Previews

White Background



This preview shows how the Decimal color 13082265 looks on a white background.

Color Contrast Check

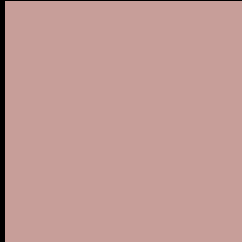
Large Text (above 18pt) WCAG AA × Fail

Any Text WCAG AA × Fail

Large Text (above 18pt) WCAG AAA × Fail

Any Text WCAG AAA × Fail

Black Background



This preview shows how the Decimal color 13082265 looks on a black background.

Color Contrast Check

Large Text (above 18pt) WCAG AA ✓ Pass

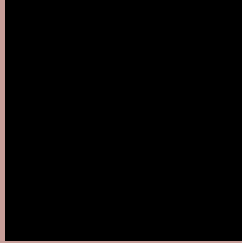
Any Text WCAG AA ✓ Pass

Large Text (above 18pt) WCAG AAA ✓ Pass

Any Text WCAG AAA ✓ Pass

If you want to check with other color combinations, try the [Color Contrast Checker](#).

Decimal 13082265 Background



This preview shows how black text looks on a background with the Decimal color 13082265.



This preview shows how white text looks on a background with the Decimal color 13082265.

Color Blindness Simulation

Color vision deficiency is a very complex topic, and I could not describe the different causes any better than Wikipedia does, so if you want to learn more, you should check out their [article about color blindness](#).


Dichromacy



Original Color
13082265

Protanopia
11380638

Deuteranopia
12493464



Tritanopia
13212840

Trichromacy



Original Color
13082265

Protanomaly
11969692

Deuteranomaly
12689816

Tritanomaly
13147555

Monochromacy



Original Color
13082265

Achromatopsia
11184810

Achromatomaly
11904676

CSS Examples

Text

The CSS property to change the color of the text to Decimal 13082265 is called "color". The color property can be set on classes, ids or directly on the HTML element.

This example shows how text in the color #C79E99 looks like.

```
.text, #text, p{  
    color:#C79E99  
}
```

If you want to add a text shadow in that color use the text-shadow property, you can generate a text shadow directly with our [CSS Text Shadow Generator](#).

Here you see how black text with a 4 pixel #C79E99 colored shadow looks like.

```
.shadow{ text-shadow: 4px 4px 2px #C79E99
}
```

Border

The CSS property to change the border of an element to Decimal 13082265 is called "border". The border property can be set on classes, ids or directly on the HTML element.

This example shows the color as border, it can be applied via the CSS property "border" or "border-color".

```
.border, #border, table{ border:4px solid
#C79E99 }
```

If only the border color should be changed use the property `border-color`.

```
.border{ border-color:#C79E99 }
```

If you want to add a box shadow in that color use:

Here you see how a box with a 4 pixel #C79E99 colored shadow looks like.

```
.boxshadow{ -moz-box-shadow:4px 4px 4px  
4px #C79E99; -webkit-box-shadow:4px 4px  
4px 4px #C79E99; box-shadow:4px 4px 4px  
4px #C79E99 }
```

Background

The CSS property to change the background color of an element to Decimal 13082265 is called "background". The background property can be set on classes, ids or directly on the HTML element.

```
.background, #background, body{  
background:#C79E99 }
```

If only the background color should be changed can be used:

```
.background{ background-color:#C79E99 }
```

This example shows the color as background, it is applied via the CSS property "background".

To optimize and compress your CSS code, you can use our [online CSS compressor and optimizer](#) based on csstidy. If you want to create a linear or radial gradient as background or border, check our [CSS Gradient Generator](#).

Hey! You found this booklet interesting? Support Converting Colors with the new Membership Option!

The pro membership hides all ads, plus gives you double the colors in the color bucket, and more awesome pro features!

[Learn more, Memberships starting at \\$2.50/m!](#)

**Follow me
on Twitter!**

@ConvertingColor