

Converting Colors

Decimal(13082527)

Have a look what the booklet for
Decimal(13082527) contains.

Decimal(13082527)	3
<i>Conversions</i>	4
<i>Details</i>	6
<i>Harmonies</i>	11
<i>Previews</i>	23
<i>Color Blindness Simulation</i>	26
<i>CSS Examples</i>	29

Color

Decimal(13082527)

Conversions

Conversions Part 1

Format	Color
Hex	C79F9F
RGB	199, 159, 159
RGB Percent	78%, 62%, 62%
CMY	0.2196, 0.3765, 0.3765
CMYK	0.00, 0.20, 0.20, 0.22
HSL	0°, 26%, 70%
HSV	0°, 20%, 78%
XYZ	42.2093, 39.4416, 38.1892
YIQ	170.9600, 23.8400, 8.4800

Conversions

Conversions Part 2

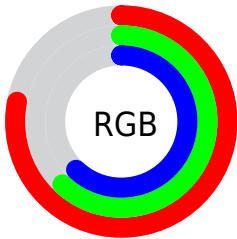
Format	Color
R_{YB}	199, 159, 159
Decimal	13082527
CIE _{Lab}	69.07, 14.79, 5.63
CIE _{LCh}	69, 15.823, 20.833
Yxy	39.4416, 0.3522, 0.3291
Android (android.graphics.Color)	4291272607 (0xFFC79F9F)
YUV	170.9600, -5.8963, 24.5911
Hunter-Lab	62.8025, 10.0647, 7.9085

Details

The Decimal color **13082527** is a light color, and the websafe version is hex **CC9999**. A complement of this color would be **10471367**, and the grayscale version is **11250603**.

A 20% lighter version of the original color is **16766678**, and **9464684** is the 20% darker color. If you saturate the color by 10%, you get **13077387**, and if you desaturate by 10%, it is **13087667**.

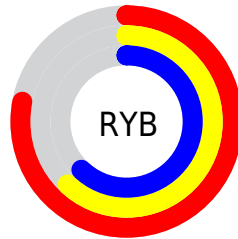
Distribution



Red (78%)

Green (62%)

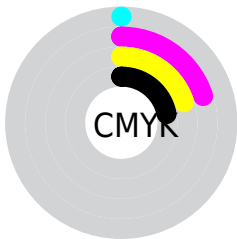
Blue (62%)



Red (78%)

Yellow (62%)

Blue (62%)

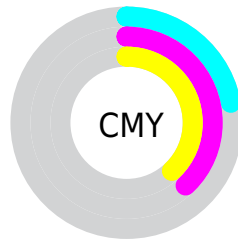


Cyan (0%)

Magenta (20%)

Yellow (20%)

Black (22%)



Cyan (22%)

Magenta (38%)

Yellow (38%)

Brightness & Saturation Gradients

These gradients show how the Decimal color 13082527 changes by changing the brightness by 10 percent. The first figure shows a shift by +10% for each color and the second figure -10%.

Similar to the brightness gradients but the following saturation gradients show a change of the Decimal color 13082527 by changing the saturation by 10% instead.

 13082527

 13082527

16777215

 11240837

 16766678

 9464684

 16773874

 7754579

 6110268

 4531751

 2953490

 1507328

 0

 13082527

 13082527

 13077387

 13087667

 13072247

 13092807

 13067107

 13097947

 13061967

 13103087

 13057084

 13107199

 13051944

 13046804

 13041664

Harmonies

Analogous

The Analogous color harmony consists of three colors that are next to each other on the color wheel.



12820398



13082527



12821139

Triad

The Triadic color harmony groups three colors that are evenly spaced from another and form a triangle on the color wheel.



13082527



10071958



9677764

Complementary

The Complementary color scheme is a pair of colors which are on the opposite of each other on the color wheel.



13082527



10471367

Split Complementary

Split-complementary colors differ from the complementary color scheme. The scheme consists of three colors, the original color and two neighbors of the complement color.



8826814



13082527



9154980

Square

The Square scheme is like the rectangle color scheme, but the four colors are evenly spaced on the color wheel.



13082527



11119502



8630706



10921667

Rectangle

The Rectangle color scheme consists of four colors that form a rectangle on the color wheel.



13082527



12363150



8630706



9350595

Sweetspot

The Sweet Spot groups the original color and five complimentary colors.



13082527



16773360



13082567



8419191



0



8421504

Same Dimension

The Same Dimension uses a secret algorithm to generate beautiful new colors.



13082527



16761538



13087647



6511194



10682368



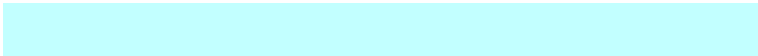
2359296

Inverse Universe

The Inverse Universe completely reimagines the original color for something new.



10471367



12779519



10466247



5923683



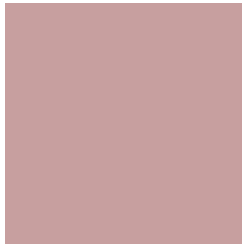
41891



9252

Previews

White Background



This preview shows how the Decimal color 13082527 looks on a white background.

Color Contrast Check

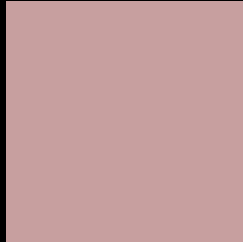
Large Text (above 18pt) WCAG AA × Fail

Any Text WCAG AA × Fail

Large Text (above 18pt) WCAG AAA × Fail

Any Text WCAG AAA × Fail

Black Background



This preview shows how the Decimal color 13082527 looks on a black background.

Color Contrast Check

Large Text (above 18pt) WCAG AA ✓ Pass

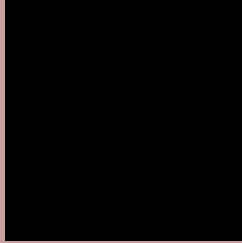
Any Text WCAG AA ✓ Pass

Large Text (above 18pt) WCAG AAA ✓ Pass

Any Text WCAG AAA ✓ Pass

If you want to check with other color combinations, try the [Color Contrast Checker](#).

Decimal 13082527 Background



This preview shows how black text looks on a background with the Decimal color 13082527.



This preview shows how white text looks on a background with the Decimal color 13082527.

Color Blindness Simulation

Color vision deficiency is a very complex topic, and I could not describe the different causes any better than Wikipedia does, so if you want to learn more, you should check out their [article about color blindness](#).


Dichromacy



Original Color
13082527

Protanopia
11380900

Deuteranopia
12428190



Tritanopia
13147562

Trichromacy



Original Color
13082527

Protanomaly
11969954

Deuteranomaly
12690078

Tritanomaly
13147814

Monochromacy



Original Color
13082527

Achromatopsia
11250603

Achromatomaly
11904935

CSS Examples

Text

The CSS property to change the color of the text to Decimal 13082527 is called "color". The color property can be set on classes, ids or directly on the HTML element.

This example shows how text in the color #C79F9F looks like.

```
.text, #text, p{  
    color:#C79F9F  
}
```

If you want to add a text shadow in that color use the text-shadow property, you can generate a text shadow directly with our [CSS Text Shadow Generator](#).

Here you see how black text with a 4 pixel #C79F9F colored shadow looks like.

```
.shadow{ text-shadow: 4px 4px 2px #C79F9F
}
```

Border

The CSS property to change the border of an element to Decimal 13082527 is called "border". The border property can be set on classes, ids or directly on the HTML element.

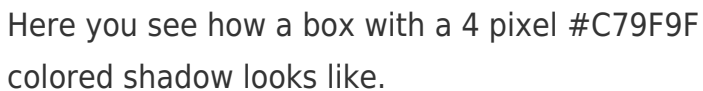
This example shows the color as border, it can be applied via the CSS property "border" or "border-color".

```
.border, #border, table{ border:4px solid
#C79F9F }
```

If only the border color should be changed use the property `border-color`.

```
.border{ border-color:#C79F9F }
```

If you want to add a box shadow in that color use:



Here you see how a box with a 4 pixel #C79F9F colored shadow looks like.

```
.boxshadow{ -moz-box-shadow:4px 4px 4px  
4px #C79F9F; -webkit-box-shadow:4px 4px  
4px 4px #C79F9F; box-shadow:4px 4px 4px  
4px #C79F9F }
```

Background

The CSS property to change the background color of an element to Decimal 13082527 is called "background". The background property can be set on classes, ids or directly on the HTML element.

```
.background, #background, body{  
background:#C79F9F }
```

If only the background color should be changed can be used:

```
.background{ background-color:#C79F9F }
```

This example shows the color as background, it is applied via the CSS property "background".

To optimize and compress your CSS code, you can use our [online CSS compressor and optimizer](#) based on csstidy. If you want to create a linear or radial gradient as background or border, check our [CSS Gradient Generator](#).

Hey! You found this booklet interesting? Support Converting Colors with the new Membership Option!

The pro membership hides all ads, plus gives you double the colors in the color bucket, and more awesome pro features!

[Learn more, Memberships starting at \\$2.50/m!](#)

**Follow me
on Twitter!**

@ConvertingColor