

Converting Colors

Decimal(13083252)

Have a look what the booklet for
Decimal(13083252) contains.

Decimal(13083252)	3
<i>Conversions</i>	4
<i>Details</i>	6
<i>Harmonies</i>	11
<i>Previews</i>	23
<i>Color Blindness Simulation</i>	26
<i>CSS Examples</i>	29

Color

Decimal(13083252)

Conversions

Conversions Part 1

Format	Color
Hex	C7A274
RGB	199, 162, 116
RGB Percent	78%, 64%, 45%
CMY	0.2196, 0.3647, 0.5451
CMYK	0.00, 0.19, 0.42, 0.22
HSL	33°, 43%, 62%
HSV	33°, 42%, 78%
XYZ	39.6259, 39.2437, 22.0093
YIQ	167.8190, 36.8180, -6.4620

Conversions

Conversions Part 2

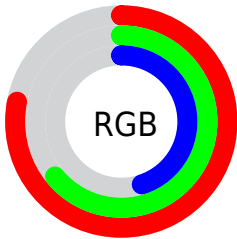
Format	Color
RYB	183, 199, 116
Decimal	13083252
CIELab	68.93, 7.46, 29.05
CIElCh	69, 29.992, 75.605
Yxy	39.2437, 0.3928, 0.3890
Android (android.graphics.Color)	4291273332 (0xFFC7A274)
YUV	167.8190, -25.5468, 27.3457
Hunter-Lab	62.6448, 3.2815, 23.0207

Details

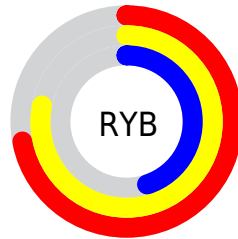
The Decimal color **13083252** is a light color, and the websafe version is hex **CC9966**. A complement of this color would be **7641543**, and the grayscale version is **11053224**.

A 20% lighter version of the original color is **16767400**, and **9399875** is the 20% darker color. If you saturate the color by 10%, you get **13080928**, and if you desaturate by 10%, it is **13085576**.

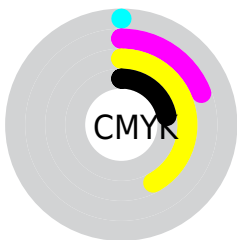
Distribution



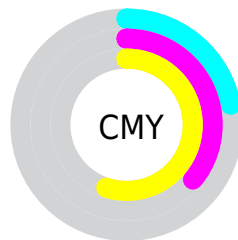
- Red (78%)
- Green (64%)
- Blue (45%)



- Red (72%)
- Yellow (78%)
- Blue (45%)



- Cyan (0%)
- Magenta (19%)
- Yellow (42%)
- Black (22%)



- Cyan (22%)
- Magenta (36%)
- Yellow (55%)

Brightness & Saturation Gradients

These gradients show how the Decimal color 13083252 changes by changing the brightness by 10 percent. The first figure shows a shift by +10% for each color and the second figure -10%.

Similar to the brightness gradients but the following saturation gradients show a change of the Decimal color 13083252 by changing the saturation by 10% instead.

 13083252

 13083252

16777215

 11241563

 16767400

 9399875

 16774596

 7689772

 16777184

 5914390

16777213

 4335872

 2692352

 458752

 0

 13083252

 13083252

 13080928

 13085576

 13078604

 13087900

 13076280

 13090224

 13074212

 13092292

 13071888

 13094616

 13069824

 13096939

 13099263

 13101567

 13103871

Harmonies

Analogous

The Analogous color harmony consists of three colors that are next to each other on the color wheel.



14260611



13083252



11381619

Triad

The Triadic color harmony groups three colors that are evenly spaced from another and form a triangle on the color wheel.



13083252



5617590



12491982

Complementary

The Complementary color scheme is a pair of colors which are on the opposite of each other on the color wheel.



13083252



7641543

Split Complementary

Split-complementary colors differ from the complementary color scheme. The scheme consists of three colors, the original color and two neighbors of the complement color.



10135260



13083252



5551566

Square

The Square scheme is like the rectangle color scheme, but the four colors are evenly spaced on the color wheel.



13083252



7321242



7450588



14063030

Rectangle

The Rectangle color scheme consists of four colors that form a rectangle on the color wheel.



13083252



10072187



7450588



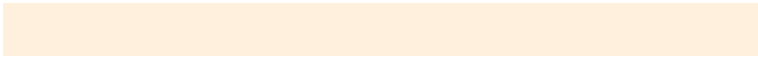
11771860

Sweetspot

The Sweet Spot groups the original color and five complimentary colors.



13083252



16773342



13071513



8418923



0



8421504

Same Dimension

The Same Dimension uses a secret algorithm to generate beautiful new colors.



13083252



16762496



12830580



6512474



10705408



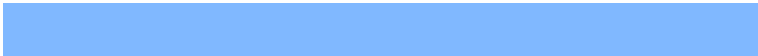
2364416

Inverse Universe

The Inverse Universe completely reimagines the original color for something new.



7641543



8435967



7894215



5922403



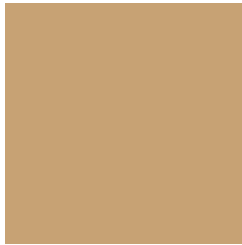
18851



4132

Previews

White Background



This preview shows how the Decimal color 13083252 looks on a white background.

Color Contrast Check

Large Text (above 18pt) WCAG AA × Fail

Any Text WCAG AA × Fail

Large Text (above 18pt) WCAG AAA × Fail

Any Text WCAG AAA × Fail

Black Background



This preview shows how the Decimal color 13083252 looks on a black background.

Color Contrast Check

Large Text (above 18pt) WCAG AA ✓ Pass

Any Text WCAG AA ✓ Pass

Large Text (above 18pt) WCAG AAA ✓ Pass

Any Text WCAG AAA ✓ Pass

If you want to check with other color combinations, try the [Color Contrast Checker](#).

Decimal 13083252 Background



This preview shows how black text looks on a background with the Decimal color 13083252.



This preview shows how white text looks on a background with the Decimal color 13083252.

Color Blindness Simulation

Color vision deficiency is a very complex topic, and I could not describe the different causes any better than Wikipedia does, so if you want to learn more, you should check out their [article about color blindness](#).

Dichromacy



Original Color
13083252

Protanopia
11970679

Deuteranopia
13214068



Tritanopia
13409191

Trichromacy



Original Color
13083252

Protanomaly
12363382

Deuteranomaly
13148532

Tritanomaly
13278868

Monochromacy



Original Color
13083252

Achromatopsia
11053224

Achromatomaly
11773589

CSS Examples

Text

The CSS property to change the color of the text to Decimal 13083252 is called "color". The color property can be set on classes, ids or directly on the HTML element.

This example shows how text in the color #C7A274 looks like.

```
.text, #text, p{  
    color:#C7A274  
}
```

If you want to add a text shadow in that color use the text-shadow property, you can generate a text shadow directly with our [CSS Text Shadow Generator](#).

Here you see how black text with a 4 pixel #C7A274 colored shadow looks like.

```
.shadow{ text-shadow: 4px 4px 2px #C7A274
}
```

Border

The CSS property to change the border of an element to Decimal 13083252 is called "border". The border property can be set on classes, ids or directly on the HTML element.

This example shows the color as border, it can be applied via the CSS property "border" or "border-color".

```
.border, #border, table{ border:4px solid
#C7A274 }
```

If only the border color should be changed use the property `border-color`.

```
.border{ border-color:#C7A274 }
```

If you want to add a box shadow in that color use:

Here you see how a box with a 4 pixel #C7A274 colored shadow looks like.

```
.boxshadow{ -moz-box-shadow:4px 4px 4px  
4px #C7A274; -webkit-box-shadow:4px 4px  
4px 4px #C7A274; box-shadow:4px 4px 4px  
4px #C7A274 }
```

Background

The CSS property to change the background color of an element to Decimal 13083252 is called "background". The background property can be set on classes, ids or directly on the HTML element.

```
.background, #background, body{  
background:#C7A274 }
```

If only the background color should be changed can be used:

```
.background{ background-color:#C7A274 }
```

This example shows the color as background, it is applied via the CSS property "background".

To optimize and compress your CSS code, you can use our [online CSS compressor and optimizer](#) based on csstidy. If you want to create a linear or radial gradient as background or border, check our [CSS Gradient Generator](#).

Hey! You found this booklet interesting? Support Converting Colors with the new Membership Option!

The pro membership hides all ads, plus gives you double the colors in the color bucket, and more awesome pro features!

[Learn more, Memberships starting at \\$2.50/m!](#)

**Follow me
on Twitter!**

@ConvertingColor