

Converting Colors

Decimal(13084577)

Have a look what the booklet for
Decimal(13084577) contains.

Decimal(13084577)	3
<i>Conversions</i>	4
<i>Details</i>	6
<i>Harmonies</i>	11
<i>Previews</i>	23
<i>Color Blindness Simulation</i>	26
<i>CSS Examples</i>	29

Color

Decimal(13084577)

Conversions

Conversions Part 1

Format	Color
Hex	C7A7A1
RGB	199, 167, 161
RGB Percent	78%, 65%, 63%
CMY	0.2196, 0.3451, 0.3686
CMYK	0.00, 0.16, 0.19, 0.22
HSL	9°, 25%, 71%
HSV	9°, 19%, 78%
XYZ	43.8049, 42.3528, 39.5843
YIQ	175.8840, 20.9980, 4.9180

Conversions

Conversions Part 2

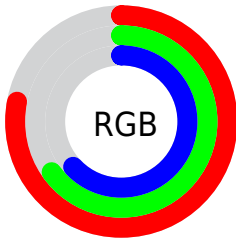
Format	Color
R_{YB}	199, 168, 161
Decimal	13084577
CIE _{Lab}	71.11, 10.73, 7.45
CIE _{LCh}	71, 13.063, 34.791
Yxy	42.3528, 0.3484, 0.3368
Android (android.graphics.Color)	4291274657 (0xFFC7A7A1)
YUV	175.8840, -7.3378, 20.2727
Hunter-Lab	65.0790, 6.2608, 9.4921

Details

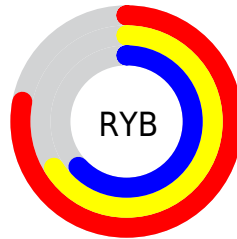
The Decimal color **13084577** is a light color, and the websafe version is hex **CC9999**. A complement of this color would be **10600903**, and the grayscale version is **11579568**.

A 20% lighter version of the original color is **16768728**, and **9532270** is the 20% darker color. If you saturate the color by 10%, you get **13080205**, and if you desaturate by 10%, it is **13088949**.

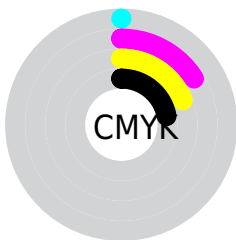
Distribution



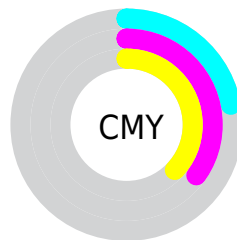
- Red (78%)
- Green (65%)
- Blue (63%)



- Red (78%)
- Yellow (66%)
- Blue (63%)



- Cyan (0%)
- Magenta (16%)
- Yellow (19%)
- Black (22%)



- Cyan (22%)
- Magenta (35%)
- Yellow (37%)

Brightness & Saturation Gradients

These gradients show how the Decimal color 13084577 changes by changing the brightness by 10 percent. The first figure shows a shift by +10% for each color and the second figure -10%.

Similar to the brightness gradients but the following saturation gradients show a change of the Decimal color 13084577 by changing the saturation by 10% instead.

 13084577

 13084577

16777215

 11242887

 16768728

 9532270

 16776180

 7821909

 6112062

 4533544

 3020820

 1703936

 0

 13084577

 13084577

 13080205

 13088949

 13075833

 13093321

 13071717

 13097437

 13067345

 13101809

 13062974

 13106175

 13058602

 13107199

 13054486

 13050114

 13049600

Harmonies

Analogous

The Analogous color harmony consists of three colors that are next to each other on the color wheel.



13084333



13084577



12692121

Triad

The Triadic color harmony groups three colors that are evenly spaced from another and form a triangle on the color wheel.



13084577



10204324



10792646

Complementary

The Complementary color scheme is a pair of colors which are on the opposite of each other on the color wheel.



13084577



10600903

Split Complementary

Split-complementary colors differ from the complementary color scheme. The scheme consists of three colors, the original color and two neighbors of the complement color.



9941699



13084577



9614768

Square

The Square scheme is like the rectangle color scheme, but the four colors are evenly spaced on the color wheel.



13084577



11055770



9483451



11774658

Rectangle

The Rectangle color scheme consists of four colors that form a rectangle on the color wheel.



13084577



12234135



9483451



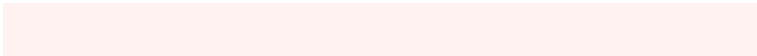
10465477

Sweetspot

The Sweet Spot groups the original color and five complimentary colors.



13084577



16773872



13083073



8419447



0



8421504

Same Dimension

The Same Dimension uses a secret algorithm to generate beautiful new colors.



13084577



16764612



13089441



6511450



10689024



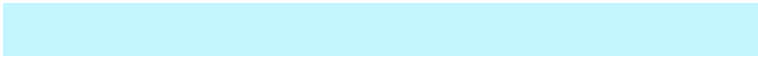
2360832

Inverse Universe

The Inverse Universe completely reimagines the original color for something new.



10600903



12908287



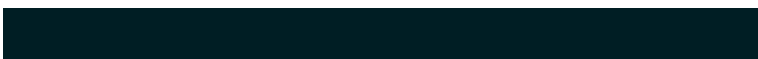
10596039



5923427



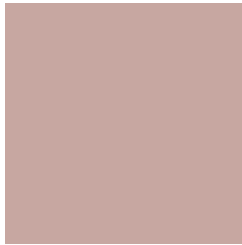
35235



7716

Previews

White Background



This preview shows how the Decimal color 13084577 looks on a white background.

Color Contrast Check

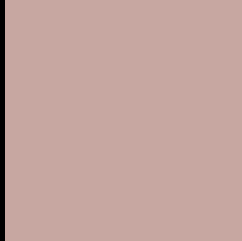
Large Text (above 18pt) WCAG AA × Fail

Any Text WCAG AA × Fail

Large Text (above 18pt) WCAG AAA × Fail

Any Text WCAG AAA × Fail

Black Background



This preview shows how the Decimal color 13084577 looks on a black background.

Color Contrast Check

Large Text (above 18pt) WCAG AA ✓ Pass

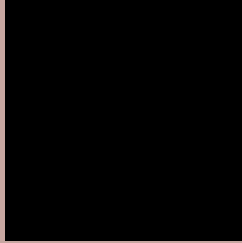
Any Text WCAG AA ✓ Pass

Large Text (above 18pt) WCAG AAA ✓ Pass

Any Text WCAG AAA ✓ Pass

If you want to check with other color combinations, try the [Color Contrast Checker](#).

Decimal 13084577 Background



This preview shows how black text looks on a background with the Decimal color 13084577.



This preview shows how white text looks on a background with the Decimal color 13084577.

Color Blindness Simulation

Color vision deficiency is a very complex topic, and I could not describe the different causes any better than Wikipedia does, so if you want to learn more, you should check out their [article about color blindness](#).


Dichromacy



Original Color
13084577

Protanopia
11841189

Deuteranopia
12888225



Tritanopia
13215153

Trichromacy



Original Color

13084577

Protanomaly

12299172

Deuteranomaly

12953761

Tritanomaly

13149867

Monochromacy



Original Color

13084577

Achromatopsia

11579568

Achromatomaly

12103083

CSS Examples

Text

The CSS property to change the color of the text to Decimal 13084577 is called "color". The color property can be set on classes, ids or directly on the HTML element.

This example shows how text in the color #C7A7A1 looks like.

```
.text, #text, p{  
  color:#C7A7A1  
}
```

If you want to add a text shadow in that color use the text-shadow property, you can generate a text shadow directly with our [CSS Text Shadow Generator](#).

Here you see how black text with a 4 pixel #C7A7A1 colored shadow looks like.

```
.shadow{ text-shadow: 4px 4px 2px #C7A7A1
}
```

Border

The CSS property to change the border of an element to Decimal 13084577 is called "border". The border property can be set on classes, ids or directly on the HTML element.

This example shows the color as border, it can be applied via the CSS property "border" or "border-color".

```
.border, #border, table{ border:4px solid
#C7A7A1 }
```

If only the border color should be changed use the property `border-color`.

```
.border{ border-color:#C7A7A1 }
```

If you want to add a box shadow in that color use:

Here you see how a box with a 4 pixel #C7A7A1 colored shadow looks like.

```
.boxshadow{ -moz-box-shadow:4px 4px 4px  
4px #C7A7A1; -webkit-box-shadow:4px 4px  
4px 4px #C7A7A1; box-shadow:4px 4px 4px  
4px #C7A7A1 }
```

Background

The CSS property to change the background color of an element to Decimal 13084577 is called "background". The background property can be set on classes, ids or directly on the HTML element.

```
.background, #background, body{  
background:#C7A7A1 }
```

If only the background color should be changed can be used:

```
.background{ background-color:#C7A7A1 }
```

This example shows the color as background, it is applied via the CSS property "background".

To optimize and compress your CSS code, you can use our [online CSS compressor and optimizer](#) based on csstidy. If you want to create a linear or radial gradient as background or border, check our [CSS Gradient Generator](#).

Hey! You found this booklet interesting? Support Converting Colors with the new Membership Option!

The pro membership hides all ads, plus gives you double the colors in the color bucket, and more awesome pro features!

[Learn more, Memberships starting at \\$2.50/m!](#)

**Follow me
on Twitter!**

@ConvertingColor