

Converting Colors

Decimal(13084830)

Have a look what the booklet for
Decimal(13084830) contains.

Decimal(13084830)	3
<i>Conversions</i>	4
<i>Details</i>	6
<i>Harmonies</i>	11
<i>Previews</i>	23
<i>Color Blindness Simulation</i>	26
<i>CSS Examples</i>	29

Color

Decimal(13084830)

Conversions

Conversions Part 1

Format	Color
Hex	C7A89E
RGB	199, 168, 158
RGB Percent	78%, 66%, 62%
CMY	0.2196, 0.3412, 0.3804
CMYK	0.00, 0.16, 0.21, 0.22
HSL	15°, 27%, 70%
HSV	15°, 21%, 78%
XYZ	43.7274, 42.6160, 38.2688
YIQ	176.1290, 21.6860, 3.4620

Conversions

Conversions Part 2

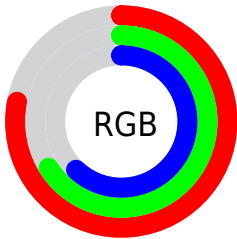
Format	Color
RYB	199, 171, 158
Decimal	13084830
CIELab	71.29, 9.72, 9.36
CIELCh	71, 13.499, 43.919
Yxy	42.6160, 0.3509, 0.3420
Android (android.graphics.Color)	4291274910 (0xFFC7A89E)
YUV	176.1290, -8.9376, 20.0579
Hunter-Lab	65.2809, 5.3237, 10.9399

Details

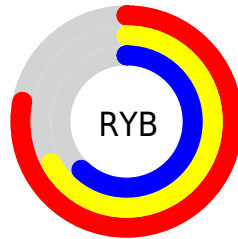
The Decimal color **13084830** is a light color, and the websafe version is hex **CC9999**. A complement of this color would be **10403271**, and the grayscale version is **11579568**.

A 20% lighter version of the original color is **16768981**, and **9532523** is the 20% darker color. If you saturate the color by 10%, you get **13080970**, and if you desaturate by 10%, it is **13088690**.

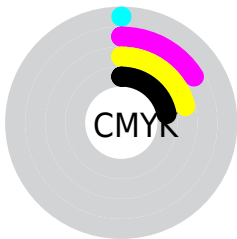
Distribution



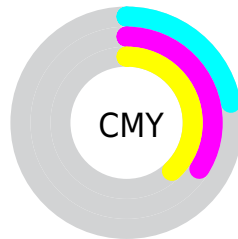
- Red (78%)
- Green (66%)
- Blue (62%)



- Red (78%)
- Yellow (67%)
- Blue (62%)



- Cyan (0%)
- Magenta (16%)
- Yellow (21%)
- Black (22%)



- Cyan (22%)
- Magenta (34%)
- Yellow (38%)

Brightness & Saturation Gradients

These gradients show how the Decimal color 13084830 changes by changing the brightness by 10 percent. The first figure shows a shift by +10% for each color and the second figure -10%.

Similar to the brightness gradients but the following saturation gradients show a change of the Decimal color 13084830 by changing the saturation by 10% instead.

 13084830

 13084830

16777215

 11243140

 16768981

 9532523

 16776433

 7822163

 6112315

 4533542

 3021073

 1638400

 0

 13084830

 13084830

 13080970

 13088690

 13077110

 13092550

 13073250

 13096410

 13069390

 13100270

 13065531

 13104127

 13061671

 13107199

 13057811

 13054208

Harmonies

Analogous

The Analogous color harmony consists of three colors that are next to each other on the color wheel.



13215401



13084830



12561303

Triad

The Triadic color harmony groups three colors that are evenly spaced from another and form a triangle on the color wheel.



13084830



10007975



11120326

Complementary

The Complementary color scheme is a pair of colors which are on the opposite of each other on the color wheel.



13084830



10403271

Split Complementary

Split-complementary colors differ from the complementary color scheme. The scheme consists of three colors, the original color and two neighbors of the complement color.



10138310



13084830



9483956

Square

The Square scheme is like the rectangle color scheme, but the four colors are evenly spaced on the color wheel.



13084830



10793885



9549247



12102336

Rectangle

The Rectangle color scheme consists of four colors that form a rectangle on the color wheel.



13084830



12037782



9549247



10727367

Sweetspot

The Sweet Spot groups the original color and five complimentary colors.



13084830



16774128



13082301



8419703



0



8421504

Same Dimension

The Same Dimension uses a secret algorithm to generate beautiful new colors.



13084830



16764863



13089950



6511706



10692608



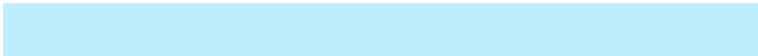
2361600

Inverse Universe

The Inverse Universe completely reimagines the original color for something new.



10403271



12578815



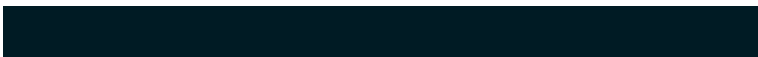
10398151



5923171



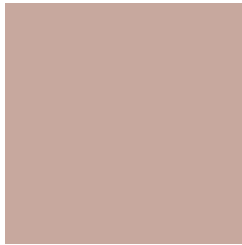
31651



6948

Previews

White Background



This preview shows how the Decimal color 13084830 looks on a white background.

Color Contrast Check

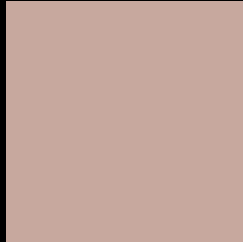
Large Text (above 18pt) WCAG AA × Fail

Any Text WCAG AA × Fail

Large Text (above 18pt) WCAG AAA × Fail

Any Text WCAG AAA × Fail

Black Background



This preview shows how the Decimal color 13084830 looks on a black background.

Color Contrast Check

Large Text (above 18pt) WCAG AA ✓ Pass

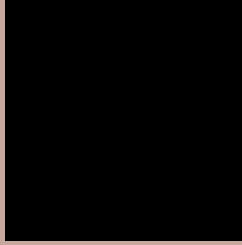
Any Text WCAG AA ✓ Pass

Large Text (above 18pt) WCAG AAA ✓ Pass

Any Text WCAG AAA ✓ Pass

If you want to check with other color combinations, try the [Color Contrast Checker](#).

Decimal 13084830 Background



This preview shows how black text looks on a background with the Decimal color 13084830.




This preview shows how white text looks on a background with the Decimal color 13084830.

Color Blindness Simulation

Color vision deficiency is a very complex topic, and I could not describe the different causes any better than Wikipedia does, so if you want to learn more, you should check out their [article about color blindness](#).

Dichromacy





Tritanopia
13215154

Trichromacy



Original Color
13084830

Protanomaly
12364960

Deuteranomaly
13019294

Tritanomaly
13149867

Monochromacy



Original Color
13084830

Achromatopsia
11579568

Achromatomaly
12103081

CSS Examples

Text

The CSS property to change the color of the text to Decimal 13084830 is called "color". The color property can be set on classes, ids or directly on the HTML element.

This example shows how text in the color #C7A89E looks like.

```
.text, #text, p{  
    color:#C7A89E  
}
```

If you want to add a text shadow in that color use the text-shadow property, you can generate a text shadow directly with our [CSS Text Shadow Generator](#).

Here you see how black text with a 4 pixel #C7A89E colored shadow looks like.

```
.shadow{ text-shadow: 4px 4px 2px #C7A89E
}
```

Border

The CSS property to change the border of an element to Decimal 13084830 is called "border". The border property can be set on classes, ids or directly on the HTML element.

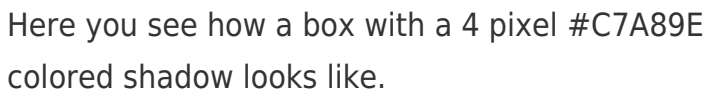
This example shows the color as border, it can be applied via the CSS property "border" or "border-color".

```
.border, #border, table{ border:4px solid
#C7A89E }
```

If only the border color should be changed use the property `border-color`.

```
.border{ border-color:#C7A89E }
```

If you want to add a box shadow in that color use:



Here you see how a box with a 4 pixel #C7A89E colored shadow looks like.

```
.boxshadow{ -moz-box-shadow:4px 4px 4px  
4px #C7A89E; -webkit-box-shadow:4px 4px  
4px 4px #C7A89E; box-shadow:4px 4px 4px  
4px #C7A89E }
```

Background

The CSS property to change the background color of an element to Decimal 13084830 is called "background". The background property can be set on classes, ids or directly on the HTML element.

```
.background, #background, body{  
background:#C7A89E }
```

If only the background color should be changed can be used:

```
.background{ background-color:#C7A89E }
```

This example shows the color as background, it is applied via the CSS property "background".

To optimize and compress your CSS code, you can use our [online CSS compressor and optimizer](#) based on csstidy. If you want to create a linear or radial gradient as background or border, check our [CSS Gradient Generator](#).

Hey! You found this booklet interesting? Support Converting Colors with the new Membership Option!

The pro membership hides all ads, plus gives you double the colors in the color bucket, and more awesome pro features!

[Learn more, Memberships starting at \\$2.50/m!](#)

**Follow me
on Twitter!**

@ConvertingColor