

Converting Colors

Decimal(13085595)

Have a look what the booklet for
Decimal(13085595) contains.

Decimal(13085595)	3
<i>Conversions</i>	4
<i>Details</i>	6
<i>Harmonies</i>	11
<i>Previews</i>	23
<i>Color Blindness Simulation</i>	26
<i>CSS Examples</i>	29

Color

Decimal(13085595)

Conversions

Conversions Part 1

Format	Color
Hex	C7AB9B
RGB	199, 171, 155
RGB Percent	78%, 67%, 61%
CMY	0.2196, 0.3294, 0.3922
CMYK	0.00, 0.14, 0.22, 0.22
HSL	22°, 28%, 69%
HSV	22°, 22%, 78%
XYZ	44.0325, 43.6345, 37.1119
YIQ	177.5480, 21.8240, 0.9600

Conversions

Conversions Part 2

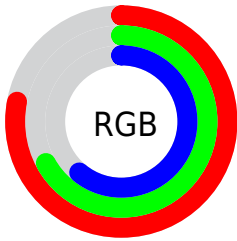
Format	Color
RYB	199, 180, 155
Decimal	13085595
CIELab	71.98, 7.65, 11.99
CIELCh	72, 14.220, 57.476
Yxy	43.6345, 0.3529, 0.3497
Android (android.graphics.Color)	4291275675 (0xFFC7AB9B)
YUV	177.5480, -11.1162, 18.8134
Hunter-Lab	66.0564, 3.3875, 12.9291

Details

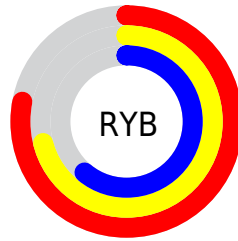
The Decimal color **13085595** is a light color, and the websafe version is hex **CC9999**. A complement of this color would be **10205127**, and the grayscale version is **11711154**.

A 20% lighter version of the original color is **16769745**, and **9533288** is the 20% darker color. If you saturate the color by 10%, you get **13082247**, and if you desaturate by 10%, it is **13088943**.

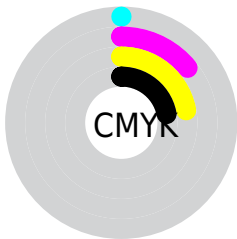
Distribution



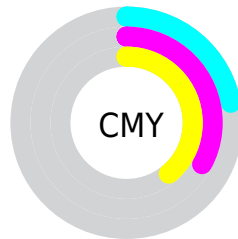
- Red (78%)
- Green (67%)
- Blue (61%)



- Red (78%)
- Yellow (71%)
- Blue (61%)



- Cyan (0%)
- Magenta (14%)
- Yellow (22%)
- Black (22%)



- Cyan (22%)
- Magenta (33%)
- Yellow (39%)

Brightness & Saturation Gradients

These gradients show how the Decimal color 13085595 changes by changing the brightness by 10 percent. The first figure shows a shift by +10% for each color and the second figure -10%.

Similar to the brightness gradients but the following saturation gradients show a change of the Decimal color 13085595 by changing the saturation by 10% instead.

 13085595

 13085595

16777215

 11243649

 16769745

 9533288

 16777198

 7822928

 6112825

 4534307

 3021582

 1638656

 0

 13085595

 13085595

 13082247

 13088943

 13079155

 13092035

 13075807

 13095383

 13072459

 13098731

 13069367

 13101823

 13066020

 13105151

 13062672

 13107199

 13060096

Harmonies

Analogous

The Analogous color harmony consists of three colors that are next to each other on the color wheel.



13412517



13085595



12365719

Triad

The Triadic color harmony groups three colors that are evenly spaced from another and form a triangle on the color wheel.



13085595



9681071



11709895

Complementary

The Complementary color scheme is a pair of colors which are on the opposite of each other on the color wheel.



13085595



10205127

Split Complementary

Split-complementary colors differ from the complementary color scheme. The scheme consists of three colors, the original color and two neighbors of the complement color.



10597066



13085595



9418940

Square

The Square scheme is like the rectangle color scheme, but the four colors are evenly spaced on the color wheel.



13085595



10466978



9746118



12692159

Rectangle

The Rectangle color scheme consists of four colors that form a rectangle on the color wheel.



13085595



11776664



9746118



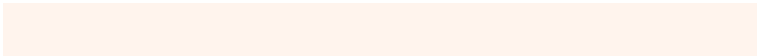
11317193

Sweetspot

The Sweet Spot groups the original color and five complimentary colors.



13085595



16774381



13081528



8419701



0



8421504

Same Dimension

The Same Dimension uses a secret algorithm to generate beautiful new colors.



13085595



16765882



13090971



6511962



10697472



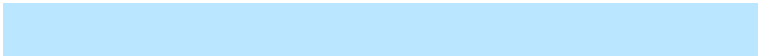
2362624

Inverse Universe

The Inverse Universe completely reimagines the original color for something new.



10205127



12248831



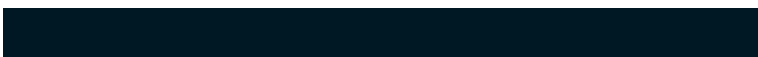
10199751



5922915



26787



5924

Previews

White Background



This preview shows how the Decimal color 13085595 looks on a white background.

Color Contrast Check

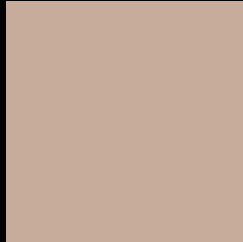
Large Text (above 18pt) WCAG AA × Fail

Any Text WCAG AA × Fail

Large Text (above 18pt) WCAG AAA × Fail

Any Text WCAG AAA × Fail

Black Background



This preview shows how the Decimal color 13085595 looks on a black background.

Color Contrast Check

Large Text (above 18pt) WCAG AA ✓ Pass

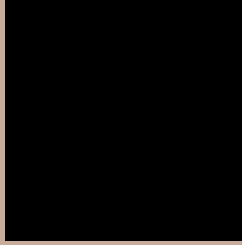
Any Text WCAG AA ✓ Pass

Large Text (above 18pt) WCAG AAA ✓ Pass

Any Text WCAG AAA ✓ Pass

If you want to check with other color combinations, try the [Color Contrast Checker](#).

Decimal 13085595 Background



This preview shows how black text looks on a background with the Decimal color 13085595.



This preview shows how white text looks on a background with the Decimal color 13085595.

Color Blindness Simulation

Color vision deficiency is a very complex topic, and I could not describe the different causes any better than Wikipedia does, so if you want to learn more, you should check out their [article about color blindness](#).


Dichromacy



Original Color
13085595

Protanopia
12103838

Deuteranopia
13216411



Tritanopia
13281204

Trichromacy



Original Color
13085595

Protanomaly
12431005

Deuteranomaly
13150875

Tritanomaly
13215915

Monochromacy



Original Color
13085595

Achromatopsia
11711154

Achromatomaly
12234666

CSS Examples

Text

The CSS property to change the color of the text to Decimal 13085595 is called "color". The color property can be set on classes, ids or directly on the HTML element.

This example shows how text in the color #C7AB9B looks like.

```
.text, #text, p{  
    color:#C7AB9B  
}
```

If you want to add a text shadow in that color use the text-shadow property, you can generate a text shadow directly with our [CSS Text Shadow Generator](#).

Here you see how black text with a 4 pixel #C7AB9B colored shadow looks like.

```
.shadow{ text-shadow: 4px 4px 2px #C7AB9B
}
```

Border

The CSS property to change the border of an element to Decimal 13085595 is called "border". The border property can be set on classes, ids or directly on the HTML element.

This example shows the color as border, it can be applied via the CSS property "border" or "border-color".

```
.border, #border, table{ border:4px solid
#C7AB9B }
```

If only the border color should be changed use the property `border-color`.

```
.border{ border-color:#C7AB9B }
```

If you want to add a box shadow in that color use:

Here you see how a box with a 4 pixel #C7AB9B colored shadow looks like.

```
.boxshadow{ -moz-box-shadow:4px 4px 4px  
4px #C7AB9B; -webkit-box-shadow:4px 4px  
4px 4px #C7AB9B; box-shadow:4px 4px 4px  
4px #C7AB9B }
```

Background

The CSS property to change the background color of an element to Decimal 13085595 is called "background". The background property can be set on classes, ids or directly on the HTML element.

```
.background, #background, body{  
background:#C7AB9B }
```

If only the background color should be changed can be used:

```
.background{ background-color:#C7AB9B }
```

This example shows the color as background, it is applied via the CSS property "background".

To optimize and compress your CSS code, you can use our [online CSS compressor and optimizer](#) based on csstidy. If you want to create a linear or radial gradient as background or border, check our [CSS Gradient Generator](#).

Hey! You found this booklet interesting? Support Converting Colors with the new Membership Option!

The pro membership hides all ads, plus gives you double the colors in the color bucket, and more awesome pro features!

[Learn more, Memberships starting at \\$2.50/m!](#)

**Follow me
on Twitter!**

@ConvertingColor