

Converting Colors

Decimal(13086360)

Have a look what the booklet for
Decimal(13086360) contains.

Decimal(13086360)	3
<i>Conversions</i>	4
<i>Details</i>	6
<i>Harmonies</i>	11
<i>Previews</i>	23
<i>Color Blindness Simulation</i>	26
<i>CSS Examples</i>	29

Color

Decimal(13086360)

Conversions

Conversions Part 1

Format	Color
Hex	C7AE98
RGB	199, 174, 152
RGB Percent	78%, 68%, 60%
CMY	0.2196, 0.3176, 0.4039
CMYK	0.00, 0.13, 0.24, 0.22
HSL	28°, 30%, 69%
HSV	28°, 24%, 78%
XYZ	44.3567, 44.6812, 35.9922
YIQ	178.9670, 21.9620, -1.5420

Conversions

Conversions Part 2

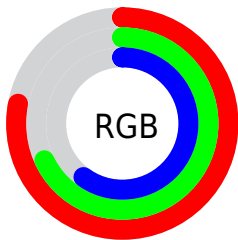
Format	Color
RYB	199, 193, 152
Decimal	13086360
CIELab	72.68, 5.58, 14.61
CIELCh	73, 15.643, 69.086
Yxy	44.6812, 0.3548, 0.3574
Android (android.graphics.Color)	4291276440 (0xFFC7AE98)
YUV	178.9670, -13.2947, 17.5689
Hunter-Lab	66.8440, 1.4731, 14.8660

Details

The Decimal color **13086360** is a light color, and the websafe version is hex **CC9999**. A complement of this color would be **10006983**, and the grayscale version is **11776947**.

A 20% lighter version of the original color is **16770510**, and **9534053** is the 20% darker color. If you saturate the color by 10%, you get **13083524**, and if you desaturate by 10%, it is **13089196**.

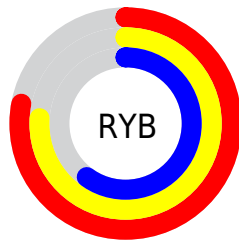
Distribution



Red (78%)

Green (68%)

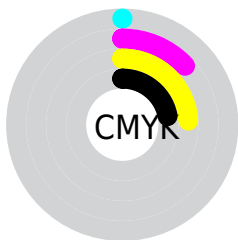
Blue (60%)



Red (78%)

Yellow (76%)

Blue (60%)

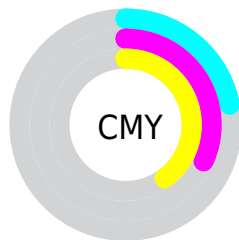


Cyan (0%)

Magenta (13%)

Yellow (24%)

Black (22%)



Cyan (22%)

Magenta (32%)

Yellow (40%)

Brightness & Saturation Gradients

These gradients show how the Decimal color 13086360 changes by changing the brightness by 10 percent. The first figure shows a shift by +10% for each color and the second figure -10%.

Similar to the brightness gradients but the following saturation gradients show a change of the Decimal color 13086360 by changing the saturation by 10% instead.

 13086360

 13086360

16777215

 11244414

 16770510

 9534053

 16777195

 7758157

 6113590

 4535073

 3022347

 1574144

 0

 13086360

 13086360

 13083524

 13089196

 13080944

 13091776

 13078108

 13094612

 13075528

 13097192

 13072693

 13100028

 13069857

 13102847

 13067277

 13105407

 13065472

 13107199

Harmonies

Analogous

The Analogous color harmony consists of three colors that are next to each other on the color wheel.



13609633



13086360



12170134

Triad

The Triadic color harmony groups three colors that are evenly spaced from another and form a triangle on the color wheel.



13086360



9419702



12234185

Complementary

The Complementary color scheme is a pair of colors which are on the opposite of each other on the color wheel.



13086360



10006983

Split Complementary

Split-complementary colors differ from the complementary color scheme. The scheme consists of three colors, the original color and two neighbors of the complement color.



11055822



13086360



9353924

Square

The Square scheme is like the rectangle color scheme, but the four colors are evenly spaced on the color wheel.



13086360



10074792



9942989



13216445

Rectangle

The Rectangle color scheme consists of four colors that form a rectangle on the color wheel.



13086360



11450009



9942989



11907019

Sweetspot

The Sweet Spot groups the original color and five complimentary colors.



13086360



16774893



13080753



8419957



0



8421504

Same Dimension

The Same Dimension uses a secret algorithm to generate beautiful new colors.



13086360



16767416



13092248



6512218



10701824



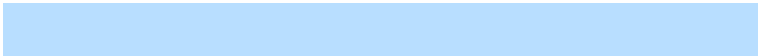
2363648

Inverse Universe

The Inverse Universe completely reimagines the original color for something new.



10006983



12115711



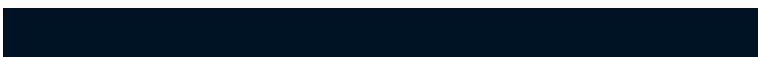
10001095



5922659



22435



4900

Previews

White Background



This preview shows how the Decimal color 13086360 looks on a white background.

Color Contrast Check

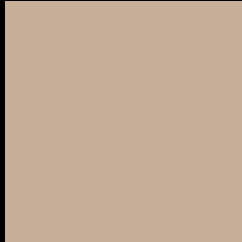
Large Text (above 18pt) WCAG AA × Fail

Any Text WCAG AA × Fail

Large Text (above 18pt) WCAG AAA × Fail

Any Text WCAG AAA × Fail

Black Background



This preview shows how the Decimal color 13086360 looks on a black background.

Color Contrast Check

Large Text (above 18pt) WCAG AA ✓ Pass

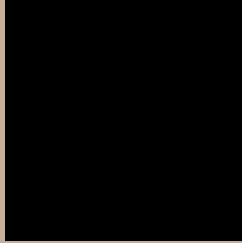
Any Text WCAG AA ✓ Pass

Large Text (above 18pt) WCAG AAA ✓ Pass

Any Text WCAG AAA ✓ Pass

If you want to check with other color combinations, try the [Color Contrast Checker](#).

Decimal 13086360 Background



This preview shows how black text looks on a background with the Decimal color 13086360.

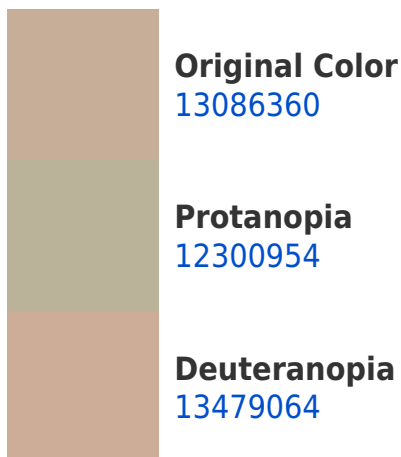



This preview shows how white text looks on a background with the Decimal color 13086360.

Color Blindness Simulation

Color vision deficiency is a very complex topic, and I could not describe the different causes any better than Wikipedia does, so if you want to learn more, you should check out their [article about color blindness](#).

Dichromacy





Tritanopia
13347511

Trichromacy



Original Color
13086360

Protanomaly
12562841

Deuteranomaly
13348248

Tritanomaly
13282220

Monochromacy



Original Color
13086360

Achromatopsia
11776947

Achromatomaly
12235177

CSS Examples

Text

The CSS property to change the color of the text to Decimal 13086360 is called "color". The color property can be set on classes, ids or directly on the HTML element.

This example shows how text in the color #C7AE98 looks like.

```
.text, #text, p{  
  color:#C7AE98  
}
```

If you want to add a text shadow in that color use the text-shadow property, you can generate a text shadow directly with our [CSS Text Shadow Generator](#).

Here you see how black text with a 4 pixel #C7AE98 colored shadow looks like.

```
.shadow{ text-shadow: 4px 4px 2px #C7AE98
}
```

Border

The CSS property to change the border of an element to Decimal 13086360 is called "border". The border property can be set on classes, ids or directly on the HTML element.

This example shows the color as border, it can be applied via the CSS property "border" or "border-color".

```
.border, #border, table{ border:4px solid
#C7AE98 }
```

If only the border color should be changed use the property `border-color`.

```
.border{ border-color:#C7AE98 }
```

If you want to add a box shadow in that color use:

Here you see how a box with a 4 pixel #C7AE98 colored shadow looks like.

```
.boxshadow{ -moz-box-shadow:4px 4px 4px  
4px #C7AE98; -webkit-box-shadow:4px 4px  
4px 4px #C7AE98; box-shadow:4px 4px 4px  
4px #C7AE98 }
```

Background

The CSS property to change the background color of an element to Decimal 13086360 is called "background". The background property can be set on classes, ids or directly on the HTML element.

```
.background, #background, body{  
background:#C7AE98 }
```

If only the background color should be changed can be used:

```
.background{ background-color:#C7AE98 }
```

This example shows the color as background, it is applied via the CSS property "background".

To optimize and compress your CSS code, you can use our [online CSS compressor and optimizer](#) based on csstidy. If you want to create a linear or radial gradient as background or border, check our [CSS Gradient Generator](#).

Hey! You found this booklet interesting? Support Converting Colors with the new Membership Option!

The pro membership hides all ads, plus gives you double the colors in the color bucket, and more awesome pro features!

[Learn more, Memberships starting at \\$2.50/m!](#)

**Follow me
on Twitter!**

@ConvertingColor