

Converting Colors

Decimal(13086363)

Have a look what the booklet for
Decimal(13086363) contains.

Decimal(13086363)	3
<i>Conversions</i>	4
<i>Details</i>	6
<i>Harmonies</i>	11
<i>Previews</i>	23
<i>Color Blindness Simulation</i>	26
<i>CSS Examples</i>	29

Color

Decimal(13086363)

Conversions

Conversions Part 1

Format	Color
Hex	C7AE9B
RGB	199, 174, 155
RGB Percent	78%, 68%, 61%
CMY	0.2196, 0.3176, 0.3922
CMYK	0.00, 0.13, 0.22, 0.22
HSL	26°, 28%, 69%
HSV	26°, 22%, 78%
XYZ	44.6056, 44.7808, 37.3029
YIQ	179.3090, 20.9990, -0.6090

Conversions

Conversions Part 2

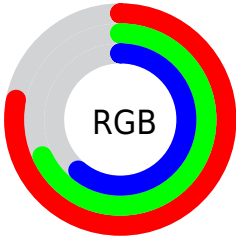
Format	Color
R _Y B	199, 188, 155
Decimal	13086363
CIE Lab	72.75, 6.02, 13.07
CIE LCh	73, 14.389, 65.248
Yxy	44.7808, 0.3521, 0.3535
Android (android.graphics.Color)	4291276443 (0xFFC7AE9B)
YUV	179.3090, -11.9843, 17.2690
Hunter-Lab	66.9184, 1.8750, 13.7924

Details

The Decimal color **13086363** is a light color, and the websafe version is hex **CC9999**. A complement of this color would be **10204359**, and the grayscale version is **11776947**.

A 20% lighter version of the original color is **16770513**, and **9534056** is the 20% darker color. If you saturate the color by 10%, you get **13083527**, and if you desaturate by 10%, it is **13089199**.

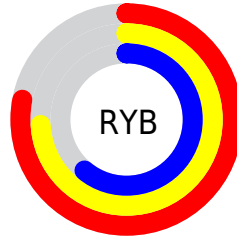
Distribution



Red (78%)

Green (68%)

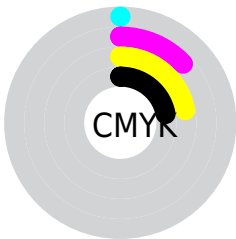
Blue (61%)



Red (78%)

Yellow (74%)

Blue (61%)

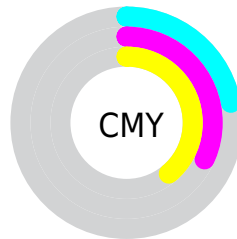


Cyan (0%)

Magenta (13%)

Yellow (22%)

Black (22%)



Cyan (22%)

Magenta (32%)

Yellow (39%)

Brightness & Saturation Gradients

These gradients show how the Decimal color 13086363 changes by changing the brightness by 10 percent. The first figure shows a shift by +10% for each color and the second figure -10%.

Similar to the brightness gradients but the following saturation gradients show a change of the Decimal color 13086363 by changing the saturation by 10% instead.

 13086363

 13086363

16777215

 11244417

 16770513

 9534056

 16777198

 7823696

 6113593

 4535075

 3022350

 1639680

 0

 13086363

 13086363

 13083527

 13089199

 13080435

 13092291

 13077599

 13095127

 13074763

 13097963

 13071671

 13101055

 13068836

 13103871

 13066000

 13106687

 13063680

 13107199

Harmonies

Analogous

The Analogous color harmony consists of three colors that are next to each other on the color wheel.



13544356



13086363



12300952

Triad

The Triadic color harmony groups three colors that are evenly spaced from another and form a triangle on the color wheel.



13086363



9681588



12103368

Complementary

The Complementary color scheme is a pair of colors which are on the opposite of each other on the color wheel.



13086363



10204359

Split Complementary

Split-complementary colors differ from the complementary color scheme. The scheme consists of three colors, the original color and two neighbors of the complement color.



10990540



13086363



9550529

Square

The Square scheme is like the rectangle color scheme, but the four colors are evenly spaced on the color wheel.



13086363



10336679



10008522



13020094

Rectangle

The Rectangle color scheme consists of four colors that form a rectangle on the color wheel.



13086363



11646363



10008522



11710666

Sweetspot

The Sweet Spot groups the original color and five complimentary colors.



13086363



16774637



13081525



8419957



0



8421504

Same Dimension

The Same Dimension uses a secret algorithm to generate beautiful new colors.



13086363



16767162



13091739



6512218



10700288



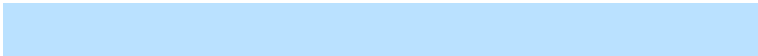
2363136

Inverse Universe

The Inverse Universe completely reimagines the original color for something new.



10204359



12247551



10198983



5922659



23971



5156

Previews

White Background



This preview shows how the Decimal color 13086363 looks on a white background.

Color Contrast Check

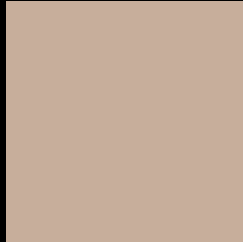
Large Text (above 18pt) WCAG AA × Fail

Any Text WCAG AA × Fail

Large Text (above 18pt) WCAG AAA × Fail

Any Text WCAG AAA × Fail

Black Background



This preview shows how the Decimal color 13086363 looks on a black background.

Color Contrast Check

Large Text (above 18pt) WCAG AA ✓ Pass

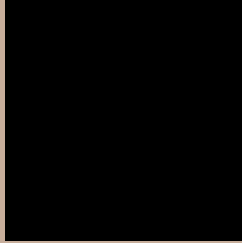
Any Text WCAG AA ✓ Pass

Large Text (above 18pt) WCAG AAA ✓ Pass

Any Text WCAG AAA ✓ Pass

If you want to check with other color combinations, try the [Color Contrast Checker](#).

Decimal 13086363 Background



This preview shows how black text looks on a background with the Decimal color 13086363.



This preview shows how white text looks on a background with the Decimal color 13086363.

Color Blindness Simulation

Color vision deficiency is a very complex topic, and I could not describe the different causes any better than Wikipedia does, so if you want to learn more, you should check out their [article about color blindness](#).


Dichromacy



Original Color
13086363

Protanopia
12300957

Deuteranopia
13413531



Tritanopia
13281975

Trichromacy



Original Color
13086363

Protanomaly
12562844

Deuteranomaly
13282715

Tritanomaly
13216685

Monochromacy



Original Color
13086363

Achromatopsia
11776947

Achromatomaly
12235178

CSS Examples

Text

The CSS property to change the color of the text to Decimal 13086363 is called "color". The color property can be set on classes, ids or directly on the HTML element.

This example shows how text in the color #C7AE9B looks like.

```
.text, #text, p{  
  color:#C7AE9B  
}
```

If you want to add a text shadow in that color use the text-shadow property, you can generate a text shadow directly with our [CSS Text Shadow Generator](#).

Here you see how black text with a 4 pixel #C7AE9B colored shadow looks like.

```
.shadow{ text-shadow: 4px 4px 2px #C7AE9B  
}
```

Border

The CSS property to change the border of an element to Decimal 13086363 is called "border". The border property can be set on classes, ids or directly on the HTML element.

This example shows the color as border, it can be applied via the CSS property "border" or "border-color".

```
.border, #border, table{ border:4px solid  
#C7AE9B }
```

If only the border color should be changed use the property `border-color`.

```
.border{ border-color:#C7AE9B }
```

If you want to add a box shadow in that color use:

Here you see how a box with a 4 pixel #C7AE9B colored shadow looks like.

```
.boxshadow{ -moz-box-shadow:4px 4px 4px  
4px #C7AE9B; -webkit-box-shadow:4px 4px  
4px 4px #C7AE9B; box-shadow:4px 4px 4px  
4px #C7AE9B }
```

Background

The CSS property to change the background color of an element to Decimal 13086363 is called "background". The background property can be set on classes, ids or directly on the HTML element.

```
.background, #background, body{  
background:#C7AE9B }
```

If only the background color should be changed can be used:

```
.background{ background-color:#C7AE9B }
```

This example shows the color as background, it is applied via the CSS property "background".

To optimize and compress your CSS code, you can use our [online CSS compressor and optimizer](#) based on csstidy. If you want to create a linear or radial gradient as background or border, check our [CSS Gradient Generator](#).

Hey! You found this booklet interesting? Support Converting Colors with the new Membership Option!

The pro membership hides all ads, plus gives you double the colors in the color bucket, and more awesome pro features!

[Learn more, Memberships starting at \\$2.50/m!](#)

**Follow me
on Twitter!**

@ConvertingColor