

Converting Colors

Decimal(13086372)

Have a look what the booklet for
Decimal(13086372) contains.

Decimal(13086372)	3
<i>Conversions</i>	4
<i>Details</i>	6
<i>Harmonies</i>	11
<i>Previews</i>	23
<i>Color Blindness Simulation</i>	26
<i>CSS Examples</i>	29

Color

Decimal(13086372)

Conversions

Conversions Part 1

Format	Color
Hex	C7AEA4
RGB	199, 174, 164
RGB Percent	78%, 68%, 64%
CMY	0.2196, 0.3176, 0.3569
CMYK	0.00, 0.13, 0.18, 0.22
HSL	17°, 24%, 71%
HSV	17°, 18%, 78%
XYZ	45.3901, 45.0946, 41.4338
YIQ	180.3350, 18.1100, 2.1900

Conversions

Conversions Part 2

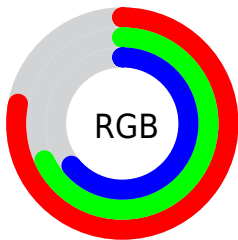
Format	Color
RYB	199, 178, 164
Decimal	13086372
CIELab	72.95, 7.40, 8.44
CIElCh	73, 11.222, 48.759
Yxy	45.0946, 0.3441, 0.3418
Android (android.graphics.Color)	4291276452 (0xFFC7AEA4)
YUV	180.3350, -8.0532, 16.3692
Hunter-Lab	67.1525, 3.1359, 10.4242

Details

The Decimal color **13086372** is a light color, and the websafe version is hex **CC9999**. A complement of this color would be **10796487**, and the grayscale version is **11842740**.

A 20% lighter version of the original color is **16770523**, and **9534064** is the 20% darker color. If you saturate the color by 10%, you get **13082768**, and if you desaturate by 10%, it is **13089976**.

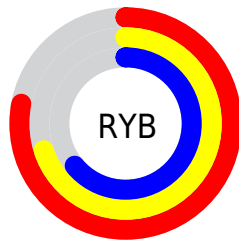
Distribution



Red (78%)

Green (68%)

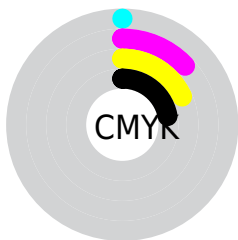
Blue (64%)



Red (78%)

Yellow (70%)

Blue (64%)

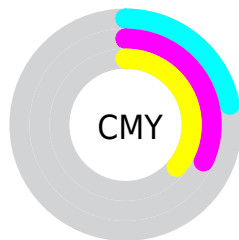


Cyan (0%)

Magenta (13%)

Yellow (18%)

Black (22%)



Cyan (22%)

Magenta (32%)

Yellow (36%)

Brightness & Saturation Gradients

These gradients show how the Decimal color 13086372 changes by changing the brightness by 10 percent. The first figure shows a shift by +10% for each color and the second figure -10%.

Similar to the brightness gradients but the following saturation gradients show a change of the Decimal color 13086372 by changing the saturation by 10% instead.

 13086372

 13086372

16777215

 11309962

 16770523

 9534064

 16777207

 7823704

 6179137

 4600363

 3087638

 1770752

 0

 13086372

 13086372

 13082768

 13089976

 13079164

 13093580


 13075304

 13097440

 13071700

 13101044

 13068097

 13104639

 13064493

 13107199

 13060633

 13057029

 13056256

Harmonies

Analogous

The Analogous color harmony consists of three colors that are next to each other on the color wheel.



13216941



13086372



12562847

Triad

The Triadic color harmony groups three colors that are evenly spaced from another and form a triangle on the color wheel.



13086372



10467759



11580102

Complementary

The Complementary color scheme is a pair of colors which are on the opposite of each other on the color wheel.



13086372



10796487

Split Complementary

Split-complementary colors differ from the complementary color scheme. The scheme consists of three colors, the original color and two neighbors of the complement color.



10794439



13086372



10140089

Square

The Square scheme is like the rectangle color scheme, but the four colors are evenly spaced on the color wheel.



13086372



11122597



10205378



12431297

Rectangle

The Rectangle color scheme consists of four colors that form a rectangle on the color wheel.



13086372



12104607



10205378



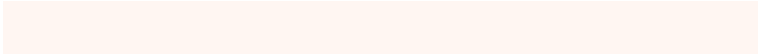
11318215

Sweetspot

The Sweet Spot groups the original color and five complimentary colors.



13086372



16774898



13083837



8419960



0



8421504

Same Dimension

The Same Dimension uses a secret algorithm to generate beautiful new colors.



13086372



16767433



13090724



6511706



10694400



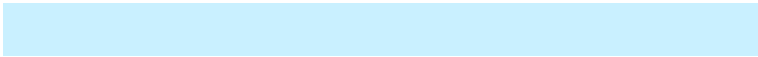
2361856

Inverse Universe

The Inverse Universe completely reimagines the original color for something new.



10796487



13234431



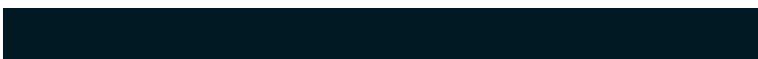
10792135



5923171



30115



6692

Previews

White Background



This preview shows how the Decimal color 13086372 looks on a white background.

Color Contrast Check

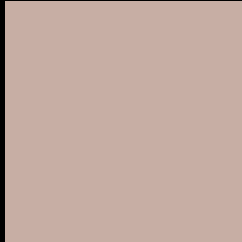
Large Text (above 18pt) WCAG AA × Fail

Any Text WCAG AA × Fail

Large Text (above 18pt) WCAG AAA × Fail

Any Text WCAG AAA × Fail

Black Background



This preview shows how the Decimal color 13086372 looks on a black background.

Color Contrast Check

Large Text (above 18pt) WCAG AA ✓ Pass

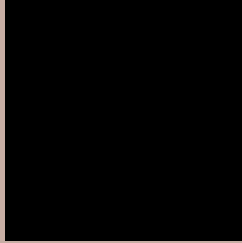
Any Text WCAG AA ✓ Pass

Large Text (above 18pt) WCAG AAA ✓ Pass

Any Text WCAG AAA ✓ Pass

If you want to check with other color combinations, try the [Color Contrast Checker](#).

Decimal 13086372 Background



This preview shows how black text looks on a background with the Decimal color 13086372.



This preview shows how white text looks on a background with the Decimal color 13086372.

Color Blindness Simulation

Color vision deficiency is a very complex topic, and I could not describe the different causes any better than Wikipedia does, so if you want to learn more, you should check out their [article about color blindness](#).

Dichromacy

	Original Color 13086372
	Protanopia 12170150
	Deuteranopia 13282724



Tritanopia
13282232

Trichromacy



Original Color
13086372

Protanomaly
12497317

Deuteranomaly
13217188

Tritanomaly
13216945

Monochromacy



Original Color
13086372

Achromatopsia
11842740

Achromatomaly
12300974

CSS Examples

Text

The CSS property to change the color of the text to Decimal 13086372 is called "color". The color property can be set on classes, ids or directly on the HTML element.

This example shows how text in the color #C7AEA4 looks like.

```
.text, #text, p{  
    color:#C7AEA4  
}
```

If you want to add a text shadow in that color use the text-shadow property, you can generate a text shadow directly with our [CSS Text Shadow Generator](#).

Here you see how black text with a 4 pixel #C7AEA4 colored shadow looks like.

```
.shadow{ text-shadow: 4px 4px 2px #C7AEA4
}
```

Border

The CSS property to change the border of an element to Decimal 13086372 is called "border". The border property can be set on classes, ids or directly on the HTML element.

This example shows the color as border, it can be applied via the CSS property "border" or "border-color".

```
.border, #border, table{ border:4px solid
#C7AEA4 }
```

If only the border color should be changed use the property `border-color`.

```
.border{ border-color:#C7AEA4 }
```

If you want to add a box shadow in that color use:

Here you see how a box with a 4 pixel #C7AEA4 colored shadow looks like.

```
.boxshadow{ -moz-box-shadow:4px 4px 4px  
4px #C7AEA4; -webkit-box-shadow:4px 4px  
4px 4px #C7AEA4; box-shadow:4px 4px 4px  
4px #C7AEA4 }
```

Background

The CSS property to change the background color of an element to Decimal 13086372 is called "background". The background property can be set on classes, ids or directly on the HTML element.

```
.background, #background, body{  
background:#C7AEA4 }
```

If only the background color should be changed can be used:

```
.background{ background-color:#C7AEA4 }
```

This example shows the color as background, it is applied via the CSS property "background".

To optimize and compress your CSS code, you can use our [online CSS compressor and optimizer](#) based on csstidy. If you want to create a linear or radial gradient as background or border, check our [CSS Gradient Generator](#).

Hey! You found this booklet interesting? Support Converting Colors with the new Membership Option!

The pro membership hides all ads, plus gives you double the colors in the color bucket, and more awesome pro features!

[Learn more, Memberships starting at \\$2.50/m!](#)

**Follow me
on Twitter!**

@ConvertingColor