

# Converting Colors

Decimal(13088422)

Have a look what the booklet for  
Decimal(13088422) contains.

<b>Decimal(13088422)</b> .....	3
<b><i>Conversions</i></b> .....	4
<b><i>Details</i></b> .....	6
<b><i>Harmonies</i></b> .....	11
<b><i>Previews</i></b> .....	23
<b><i>Color Blindness Simulation</i></b> .....	26
<b><i>CSS Examples</i></b> .....	29

# **Color**

**Decimal(13088422)**

# Conversions

## Conversions Part 1

<b>Format</b>	<b>Color</b>
Hex	C7B6A6
RGB	199, 182, 166
RGB Percent	78%, 71%, 65%
CMY	0.2196, 0.2863, 0.3490
CMYK	0.00, 0.09, 0.17, 0.22
HSL	29°, 23%, 72%
HSV	29°, 17%, 78%
XYZ	47.1641, 48.3512, 42.9233
YIQ	185.2590, 15.2680, -1.3720

# Conversions

## Conversions Part 2

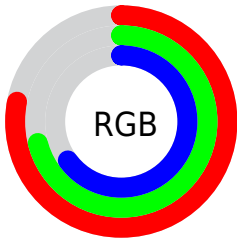
Format	Color
<a href="#">RYB</a>	<a href="#">199, 197, 166</a>
Decimal	<a href="#">13088422</a>
CIELab	<a href="#">75.05, 3.41, 10.33</a>
CIElCh	<a href="#">75, 10.876, 71.739</a>
Yxy	<a href="#">48.3512, 0.3407, 0.3493</a>
Android (android.graphics.Color)	<a href="#">4291278502 (0xFFC7B6A6)</a>
YUV	<a href="#">185.2590, -9.4947, 12.0509</a>
Hunter-Lab	<a href="#">69.5350, -0.6137, 12.0754</a>

# Details

The Decimal color **13088422** is a light color, and the websafe version is hex **CCCCCC**. A complement of this color would be **10926023**, and the grayscale version is **12171705**.

A 20% lighter version of the original color is **16772829**, and **9535858** is the 20% darker color. If you saturate the color by 10%, you get **13085842**, and if you desaturate by 10%, it is **13091002**.

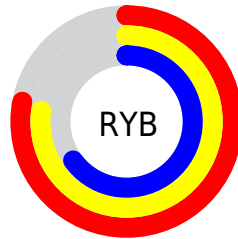
# Distribution



Red (78%)

Green (71%)

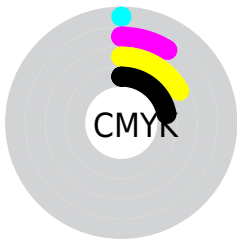
Blue (65%)



Red (78%)

Yellow (77%)

Blue (65%)

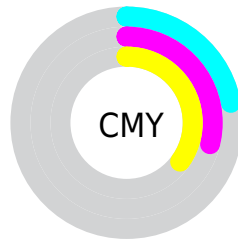


Cyan (0%)

Magenta (9%)

Yellow (17%)

Black (22%)



Cyan (22%)

Magenta (29%)

Yellow (35%)

# Brightness & Saturation Gradients

These gradients show how the Decimal color 13088422 changes by changing the brightness by 10 percent. The first figure shows a shift by +10% for each color and the second figure -10%.

Similar to the brightness gradients but the following saturation gradients show a change of the Decimal color 13088422 by changing the saturation by 10% instead.



 13088422

 13088422

16777215

 11312012

 16772829

 9535858

 16777210

 7825498

 6180930

 4602156

 3089431

 1838592

 0

 13088422

 13088422

 13085842

 13091002

 13083006

 13093838

 13080426

 13096418

 13077846

 13098998

 13075267

 13101567

 13072431

 13104383

 13069851

 13106943

 13067271

 13107199

 13066240

# Harmonies

## Analogous

The Analogous color harmony consists of three colors that are next to each other on the color wheel.



13480876



13088422



12433829

# Triad

The Triadic color harmony groups three colors that are evenly spaced from another and form a triangle on the color wheel.



13088422



10600380



12629448

# Complementary

The Complementary color scheme is a pair of colors which are on the opposite of each other on the color wheel.



13088422



10926023

# Split Complementary

Split-complementary colors differ from the complementary color scheme. The scheme consists of three colors, the original color and two neighbors of the complement color.



11778252



13088422



10600134

# Square

The Square scheme is like the rectangle color scheme, but the four colors are evenly spaced on the color wheel.



13088422



10993330



11058123



13218751

# Rectangle

The Rectangle color scheme consists of four colors that form a rectangle on the color wheel.



13088422



11910056



11058123



12367562

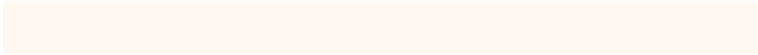


# Sweetspot

The Sweet Spot groups the original color and five complimentary colors.



13088422



16775410



13084343



8420472



0



8421504

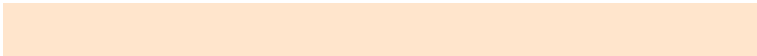


# Same Dimension

The Same Dimension uses a secret algorithm to generate beautiful new colors.



13088422



16770508



13092518



6512218



10702592



2363648

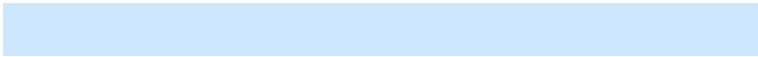


# Inverse Universe

The Inverse Universe completely reimagines the original color for something new.



10926023



13428479



10921927



5922659



21667



4644



# Previews

## White Background



This preview shows how the Decimal color 13088422 looks on a white background.

## Color Contrast Check

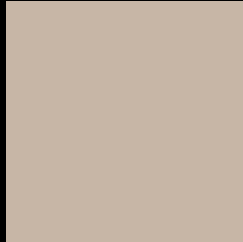
Large Text (above 18pt) WCAG AA × Fail

Any Text WCAG AA × Fail

Large Text (above 18pt) WCAG AAA × Fail

Any Text WCAG AAA × Fail

# Black Background



This preview shows how the Decimal color 13088422 looks on a black background.

## Color Contrast Check

Large Text (above 18pt) WCAG AA ✓ Pass

Any Text WCAG AA ✓ Pass

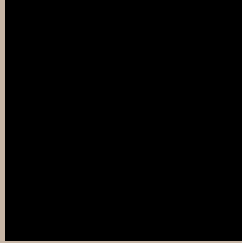
Large Text (above 18pt) WCAG AAA ✓ Pass

Any Text WCAG AAA ✓ Pass

If you want to check with other color combinations, try the [Color Contrast Checker](#).



## Decimal 13088422 Background



This preview shows how black text looks on a background with the Decimal color 13088422.



This preview shows how white text looks on a background with the Decimal color 13088422.

# Color Blindness Simulation

Color vision deficiency is a very complex topic, and I could not describe the different causes any better than Wikipedia does, so if you want to learn more, you should check out their [article about color blindness](#).

## Dichromacy



**Original Color**  
13088422

**Protanopia**  
12630183

**Deuteranopia**  
13742759



**Tritanopia**  
13284032

# Trichromacy



**Original Color**  
13088422

**Protanomaly**  
12826535

**Deuteranomaly**  
13480871

**Tritanomaly**  
13218743

# Monochromacy



**Original Color**  
13088422

**Achromatopsia**  
12171705

**Achromatomaly**  
12499122

# CSS Examples

## Text

The CSS property to change the color of the text to Decimal 13088422 is called "color". The color property can be set on classes, ids or directly on the HTML element.

This example shows how text in the color #C7B6A6 looks like.

```
.text, #text, p{  
    color:#C7B6A6  
}
```

If you want to add a text shadow in that color use the text-shadow property, you can generate a text shadow directly with our [CSS Text Shadow Generator](#).

Here you see how black text with a 4 pixel #C7B6A6 colored shadow looks like.

```
.shadow{ text-shadow: 4px 4px 2px #C7B6A6
}
```

## Border

The CSS property to change the border of an element to Decimal 13088422 is called "border". The border property can be set on classes, ids or directly on the HTML element.

This example shows the color as border, it can be applied via the CSS property "border" or "border-color".

```
.border, #border, table{ border:4px solid
#C7B6A6 }
```

If only the border color should be changed use the property `border-color`.

```
.border{ border-color:#C7B6A6 }
```

If you want to add a box shadow in that color use:

Here you see how a box with a 4 pixel #C7B6A6 colored shadow looks like.

```
.boxshadow{ -moz-box-shadow:4px 4px 4px  
4px #C7B6A6; -webkit-box-shadow:4px 4px  
4px 4px #C7B6A6; box-shadow:4px 4px 4px  
4px #C7B6A6 }
```

# Background

The CSS property to change the background color of an element to Decimal 13088422 is called "background". The background property can be set on classes, ids or directly on the HTML element.

```
.background, #background, body{  
background:#C7B6A6 }
```

If only the background color should be changed can be used:

```
.background{ background-color:#C7B6A6 }
```

This example shows the color as background, it is applied via the CSS property "background".

To optimize and compress your CSS code, you can use our [online CSS compressor and optimizer](#) based on csstidy. If you want to create a linear or radial gradient as background or border, check our [CSS Gradient Generator](#).



Hey! You found this booklet interesting? Support Converting Colors with the new Membership Option!

The pro membership hides all ads, plus gives you double the colors in the color bucket, and more awesome pro features!

**[Learn more, Memberships starting at \\$2.50/m!](#)**

**Follow me  
on Twitter!**

@ConvertingColor