

Converting Colors

Decimal(13088448)

Have a look what the booklet for
Decimal(13088448) contains.

Decimal(13088448)	3
<i>Conversions</i>	4
<i>Details</i>	6
<i>Harmonies</i>	11
<i>Previews</i>	23
<i>Color Blindness Simulation</i>	26
<i>CSS Examples</i>	29

Color

Decimal(13088448)

Conversions

Conversions Part 1

Format	Color
Hex	C7B6C0
RGB	199, 182, 192
RGB Percent	78%, 71%, 75%
CMY	0.2196, 0.2863, 0.2471
CMYK	0.00, 0.09, 0.04, 0.22
HSL	325°, 13%, 75%
HSV	325°, 9%, 78%
XYZ	49.7956, 49.4038, 56.7805
YIQ	188.2230, 6.9220, 6.7140

Conversions

Conversions Part 2

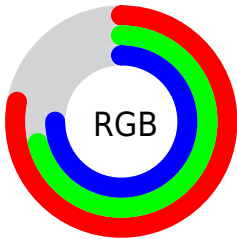
Format	Color
R_{YB}	199, 182, 192
Decimal	13088448
CIE Lab	75.70, 7.81, -2.88
CIE LCh	76, 8.322, 339.790
Yxy	49.4038, 0.3192, 0.3167
Android (android.graphics.Color)	4291278528 (0xFFC7B6C0)
YUV	188.2230, 1.8621, 9.4514
Hunter-Lab	70.2878, 3.4550, 1.3053

Details

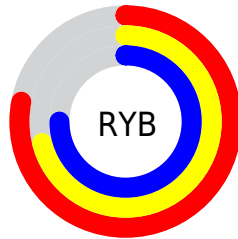
The Decimal color **13088448** is a light color, and the websafe version is hex **CCCCCC**. A complement of this color would be **11978685**, and the grayscale version is **12369084**.

A 20% lighter version of the original color is **16772856**, and **9535883** is the 20% darker color. If you saturate the color by 10%, you get **13083320**, and if you desaturate by 10%, it is **13093576**.

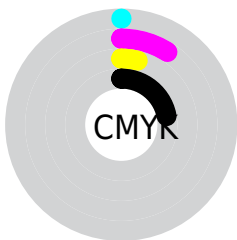
Distribution



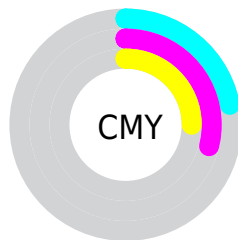
- Red (78%)
- Green (71%)
- Blue (75%)



- Red (78%)
- Yellow (71%)
- Blue (75%)



- Cyan (0%)
- Magenta (9%)
- Yellow (4%)
- Black (22%)



- Cyan (22%)
- Magenta (29%)
- Yellow (25%)

Brightness & Saturation Gradients

These gradients show how the Decimal color 13088448 changes by changing the brightness by 10 percent. The first figure shows a shift by +10% for each color and the second figure -10%.

Similar to the brightness gradients but the following saturation gradients show a change of the Decimal color 13088448 by changing the saturation by 10% instead.

■ 13088448

■ 13088448

16777215

■ 11312037

■ 16772856

■ 9535883

■ 7825521

■ 6246489

■ 4667713

■ 3154731

■ 1838615

■ 0

■ 13088448

■ 13088448

13083320

13093576

13078192

13098704

13073063

13103833

13067935

13107169

13063063

13107177

13057935

13107185

13052807

13107193

13047678

13107199

13042550

Harmonies

Analogous

The Analogous color harmony consists of three colors that are next to each other on the color wheel.



12564678



13088448



13350328

Triad

The Triadic color harmony groups three colors that are evenly spaced from another and form a triangle on the color wheel.



13088448



12499883



11059140

Complementary

The Complementary color scheme is a pair of colors which are on the opposite of each other on the color wheel.



13088448



11978685

Split Complementary

Split-complementary colors differ from the complementary color scheme. The scheme consists of three colors, the original color and two neighbors of the complement color.



11059133



13088448



11910575

Square

The Square scheme is like the rectangle color scheme, but the four colors are evenly spaced on the color wheel.



13088448



13023404



11386805



11386313

Rectangle

The Rectangle color scheme consists of four colors that form a rectangle on the color wheel.



13088448



13350579



11386805



11059138

Sweetspot

The Sweet Spot groups the original color and five complimentary colors.



13088448



16775164



12433095



8419965



0



8421504

Same Dimension

The Same Dimension uses a secret algorithm to generate beautiful new colors.



13088448



16770804



13088440



6511199



10682464



2359317

Inverse Universe

The Inverse Universe completely reimagines the original color for something new.



13088448



16770804



11978693



6511199



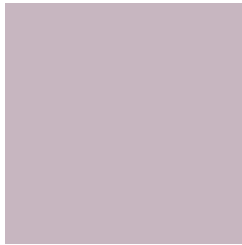
10682464



2359317

Previews

White Background



This preview shows how the Decimal color 13088448 looks on a white background.

Color Contrast Check

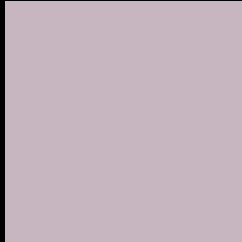
Large Text (above 18pt) WCAG AA × Fail

Any Text WCAG AA × Fail

Large Text (above 18pt) WCAG AAA × Fail

Any Text WCAG AAA × Fail

Black Background



This preview shows how the Decimal color 13088448 looks on a black background.

Color Contrast Check

Large Text (above 18pt) WCAG AA ✓ Pass

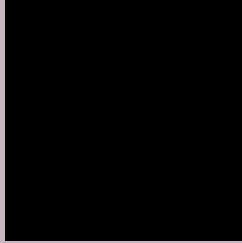
Any Text WCAG AA ✓ Pass

Large Text (above 18pt) WCAG AAA ✓ Pass

Any Text WCAG AAA ✓ Pass

If you want to check with other color combinations, try the [Color Contrast Checker](#).

Decimal 13088448 Background



This preview shows how black text looks on a background with the Decimal color 13088448.



This preview shows how white text looks on a background with the Decimal color 13088448.

Color Blindness Simulation

Color vision deficiency is a very complex topic, and I could not describe the different causes any better than Wikipedia does, so if you want to learn more, you should check out their [article about color blindness](#).


Dichromacy



Original Color
13088448

Protanopia
12368578

Deuteranopia
13284800



Tritanopia
13153732

Trichromacy



Original Color
13088448

Protanomaly
12630465

Deuteranomaly
13219264

Tritanomaly
13153731

Monochromacy



Original Color
13088448

Achromatopsia
12369084

Achromatomaly
12630717

CSS Examples

Text

The CSS property to change the color of the text to Decimal 13088448 is called "color". The color property can be set on classes, ids or directly on the HTML element.

This example shows how text in the color #C7B6C0 looks like.

```
.text, #text, p{  
    color:#C7B6C0  
}
```

If you want to add a text shadow in that color use the text-shadow property, you can generate a text shadow directly with our [CSS Text Shadow Generator](#).

Here you see how black text with a 4 pixel #C7B6C0 colored shadow looks like.

```
.shadow{ text-shadow: 4px 4px 2px #C7B6C0
}
```

Border

The CSS property to change the border of an element to Decimal 13088448 is called "border". The border property can be set on classes, ids or directly on the HTML element.

This example shows the color as border, it can be applied via the CSS property "border" or "border-color".

```
.border, #border, table{ border:4px solid
#C7B6C0 }
```

If only the border color should be changed use the property `border-color`.

```
.border{ border-color:#C7B6C0 }
```

If you want to add a box shadow in that color use:

Here you see how a box with a 4 pixel #C7B6C0 colored shadow looks like.

```
.boxshadow{ -moz-box-shadow:4px 4px 4px  
4px #C7B6C0; -webkit-box-shadow:4px 4px  
4px 4px #C7B6C0; box-shadow:4px 4px 4px  
4px #C7B6C0 }
```

Background

The CSS property to change the background color of an element to Decimal 13088448 is called "background". The background property can be set on classes, ids or directly on the HTML element.

```
.background, #background, body{  
background:#C7B6C0 }
```

If only the background color should be changed can be used:

```
.background{ background-color:#C7B6C0 }
```

This example shows the color as background, it is applied via the CSS property "background".

To optimize and compress your CSS code, you can use our [online CSS compressor and optimizer](#) based on csstidy. If you want to create a linear or radial gradient as background or border, check our [CSS Gradient Generator](#).

Hey! You found this booklet interesting? Support Converting Colors with the new Membership Option!

The pro membership hides all ads, plus gives you double the colors in the color bucket, and more awesome pro features!

[Learn more, Memberships starting at \\$2.50/m!](#)

**Follow me
on Twitter!**

@ConvertingColor