

# Converting Colors

Decimal(13142926)

Have a look what the booklet for  
Decimal(13142926) contains.

<b>Decimal(13142926)</b> .....	3
<i><b>Conversions</b></i> .....	4
<i><b>Details</b></i> .....	6
<i><b>Harmonies</b></i> .....	11
<i><b>Previews</b></i> .....	23
<i><b>Color Blindness Simulation</b></i> .....	26
<i><b>CSS Examples</b></i> .....	29

# **Color**

**Decimal(13142926)**

# Conversions

## Conversions Part 1

Format	Color
Hex	C88B8E
RGB	200, 139, 142
RGB Percent	78%, 55%, 56%
CMY	0.2157, 0.4549, 0.4431
CMYK	0.00, 0.31, 0.29, 0.22
HSL	357°, 36%, 66%
HSV	357°, 31%, 78%
XYZ	37.9345, 32.6976, 29.9031
YIQ	157.5810, 35.3930, 13.8650

# Conversions

## Conversions Part 2

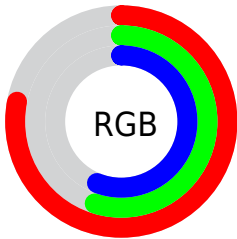
Format	Color
R <sub>Y</sub> B	200, 139, 142
Decimal	13142926
CIE Lab	63.92, 23.67, 7.78
CIE LCh	64, 24.915, 18.204
Yxy	32.6976, 0.3773, 0.3252
Android (android.graphics.Color)	4291333006 (0xFFC88B8E)
YUV	157.5810, -7.6814, 37.2015
Hunter-Lab	57.1818, 18.3491, 9.0217

# Details

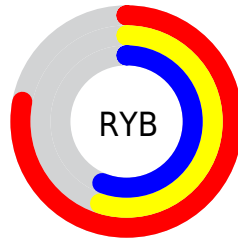
The Decimal color **13142926** is a light color, and the websafe version is hex **CC9999**. A complement of this color would be **9160901**, and the grayscale version is **10395294**.

A 20% lighter version of the original color is **16761284**, and **9525340** is the 20% darker color. If you saturate the color by 10%, you get **13137787**, and if you desaturate by 10%, it is **13148065**.

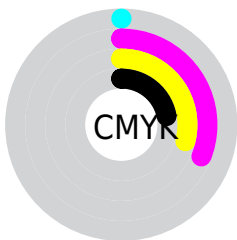
# Distribution



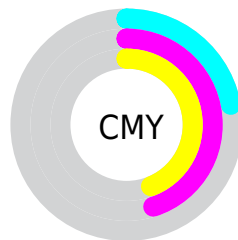
- Red (78%)
- Green (55%)
- Blue (56%)



- Red (78%)
- Yellow (55%)
- Blue (56%)



- Cyan (0%)
- Magenta (31%)
- Yellow (29%)
- Black (22%)




- Cyan (22%)
- Magenta (45%)
- Yellow (44%)

# Brightness & Saturation Gradients

These gradients show how the Decimal color 13142926 changes by changing the brightness by 10 percent. The first figure shows a shift by +10% for each color and the second figure -10%.

Similar to the brightness gradients but the following saturation gradients show a change of the Decimal color 13142926 by changing the saturation by 10% instead.



 13142926

 13142926

16777215

 11301236

 16761284

 9525340

 16768480

 7749700

 16775932

 6039854

 4395802


 2883584

 0


 13142926


 13142926


 13137787

 13148065

 13132648


 13153204


 13127509


 13158343

 13122370

 13163482

 13117231

 13168621

 13112092

 13172735

 13107210

# Harmonies

## Analogous

The Analogous color harmony consists of three colors that are next to each other on the color wheel.



12684197



13142926



12750715

# Triad

The Triadic color harmony groups three colors that are evenly spaced from another and form a triangle on the color wheel.



13142926



8692605



7577798

# Complementary

The Complementary color scheme is a pair of colors which are on the opposite of each other on the color wheel.



13142926



9160901

# Split Complementary

Split-complementary colors differ from the complementary color scheme. The scheme consists of three colors, the original color and two neighbors of the complement color.



6071739



13142926



7055249

# Square

The Square scheme is like the rectangle color scheme, but the four colors are evenly spaced on the color wheel.



13142926



10329712



5941160



9607365

# Rectangle

The Rectangle color scheme consists of four colors that form a rectangle on the color wheel.



13142926



12162162



5941160



6988483

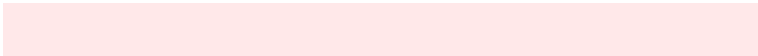


# Sweetspot

The Sweet Spot groups the original color and five complimentary colors.



13142926



16771305



12946376



8417650



0



8421504



# Same Dimension

The Same Dimension uses a secret algorithm to generate beautiful new colors.



13142926



16753061



13149835



6511194



10682376



2359298



# Inverse Universe

The Inverse Universe completely reimagines the original color for something new.



13142926



16753061



9153992



6511194



10682376

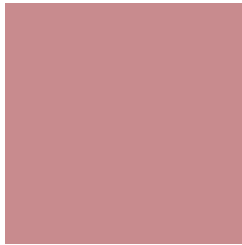


2359298



# Previews

## White Background



This preview shows how the Decimal color 13142926 looks on a white background.

## Color Contrast Check

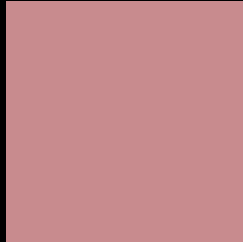
Large Text (above 18pt) WCAG AA × Fail

Any Text WCAG AA × Fail

Large Text (above 18pt) WCAG AAA × Fail

Any Text WCAG AAA × Fail

# Black Background



This preview shows how the Decimal color 13142926 looks on a black background.

## Color Contrast Check

Large Text (above 18pt) WCAG AA ✓ Pass

Any Text WCAG AA ✓ Pass

Large Text (above 18pt) WCAG AAA ✓ Pass

Any Text WCAG AAA ✓ Pass

If you want to check with other color combinations, try the [Color Contrast Checker](#).



## Decimal 13142926 Background



This preview shows how black text looks on a background with the Decimal color 13142926.



This preview shows how white text looks on a background with the Decimal color 13142926.

# Color Blindness Simulation

Color vision deficiency is a very complex topic, and I could not describe the different causes any better than Wikipedia does, so if you want to learn more, you should check out their [article about color blindness](#).


## Dichromacy



**Original Color**  
13142926

**Protanopia**  
10460054

**Deuteranopia**  
11572876



**Tritanopia**  
13208212

# Trichromacy



**Original Color**  
13142926

**Protanomaly**  
11441555

**Deuteranomaly**  
12161677

**Tritanomaly**  
13208210

# Monochromacy



**Original Color**  
13142926

**Achromatopsia**  
10395294

**Achromatomaly**  
11376536

# CSS Examples

## Text

The CSS property to change the color of the text to Decimal 13142926 is called "color". The color property can be set on classes, ids or directly on the HTML element.

This example shows how text in the color #C88B8E looks like.

```
.text, #text, p{  
    color:#C88B8E  
}
```

If you want to add a text shadow in that color use the text-shadow property, you can generate a text shadow directly with our [CSS Text Shadow Generator](#).

Here you see how black text with a 4 pixel #C88B8E colored shadow looks like.

```
.shadow{ text-shadow: 4px 4px 2px #C88B8E
}
```

## Border

The CSS property to change the border of an element to Decimal 13142926 is called "border". The border property can be set on classes, ids or directly on the HTML element.

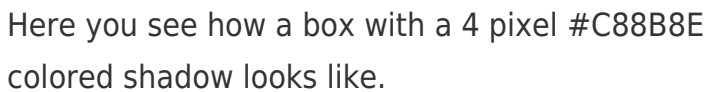
This example shows the color as border, it can be applied via the CSS property "border" or "border-color".

```
.border, #border, table{ border:4px solid
#C88B8E }
```

If only the border color should be changed use the property `border-color`.

```
.border{ border-color:#C88B8E }
```

If you want to add a box shadow in that color use:



Here you see how a box with a 4 pixel #C88B8E colored shadow looks like.

```
.boxshadow{ -moz-box-shadow:4px 4px 4px  
4px #C88B8E; -webkit-box-shadow:4px 4px  
4px 4px #C88B8E; box-shadow:4px 4px 4px  
4px #C88B8E }
```

# Background

The CSS property to change the background color of an element to Decimal 13142926 is called "background". The background property can be set on classes, ids or directly on the HTML element.

```
.background, #background, body{  
background:#C88B8E }
```

If only the background color should be changed can be used:

```
.background{ background-color:#C88B8E }
```

This example shows the color as background, it is applied via the CSS property "background".

To optimize and compress your CSS code, you can use our [online CSS compressor and optimizer](#) based on csstidy. If you want to create a linear or radial gradient as background or border, check our [CSS Gradient Generator](#).



Hey! You found this booklet interesting? Support Converting Colors with the new Membership Option!

The pro membership hides all ads, plus gives you double the colors in the color bucket, and more awesome pro features!

**[Learn more, Memberships starting at \\$2.50/m!](#)**

**Follow me  
on Twitter!**

@ConvertingColor