

# Converting Colors

Decimal(13152164)

Have a look what the booklet for  
Decimal(13152164) contains.

<b>Decimal(13152164)</b> .....	3
<i><b>Conversions</b></i> .....	4
<i><b>Details</b></i> .....	6
<i><b>Harmonies</b></i> .....	11
<i><b>Previews</b></i> .....	23
<i><b>Color Blindness Simulation</b></i> .....	26
<i><b>CSS Examples</b></i> .....	29

# **Color**

**Decimal(13152164)**

# Conversions

## Conversions Part 1

<b>Format</b>	<b>Color</b>
Hex	C8AFA4
RGB	200, 175, 164
RGB Percent	78%, 69%, 64%
CMY	0.2157, 0.3137, 0.3569
CMYK	0.00, 0.12, 0.18, 0.22
HSL	18°, 25%, 71%
HSV	18°, 18%, 78%
XYZ	45.8502, 45.6196, 41.5109
YIQ	181.2210, 18.4310, 1.8790

# Conversions

## Conversions Part 2

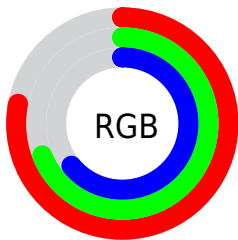
<b>Format</b>	<b>Color</b>
R <sub>Y</sub> B	200, 180, 164
Decimal	13152164
CIE Lab	73.30, 7.23, 8.94
CIE LCh	73, 11.500, 51.035
Yxy	45.6196, 0.3448, 0.3431
Android (android.graphics.Color)	4291342244 (0xFFC8AFA4)
YUV	181.2210, -8.4900, 16.4692
Hunter-Lab	67.5423, 2.9734, 10.8405

# Details

The Decimal color **13152164** is a light color, and the websafe version is hex **CC9999**. A complement of this color would be **10796488**, and the grayscale version is **11908533**.

A 20% lighter version of the original color is **16771035**, and **9599856** is the 20% darker color. If you saturate the color by 10%, you get **13148560**, and if you desaturate by 10%, it is **13155768**.

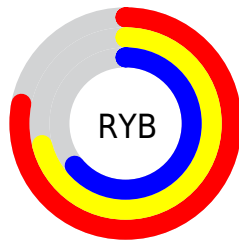
# Distribution



Red (78%)

Green (69%)

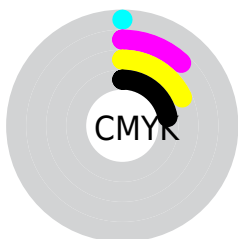
Blue (64%)



Red (78%)

Yellow (71%)

Blue (64%)

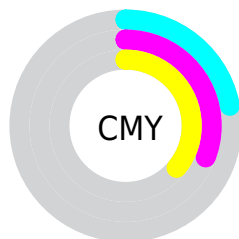


Cyan (0%)

Magenta (12%)

Yellow (18%)

Black (22%)



Cyan (22%)

Magenta (31%)


Yellow (36%)


# Brightness & Saturation Gradients

These gradients show how the Decimal color 13152164 changes by changing the brightness by 10 percent. The first figure shows a shift by +10% for each color and the second figure -10%.

Similar to the brightness gradients but the following saturation gradients show a change of the Decimal color 13152164 by changing the saturation by 10% instead.



 13152164

 13152164

16777215

 11310218

 16771035

 9599856

 16777207

 7889496


 6244929


 4666155

 3153430


 1836544

 0


 13152164

 13152164

 13148560

 13155768

 13144956


 13159372


 13141352


 13162976

 13137748


 13166580


 13134400

 13169919

 13130796

 13172735

 13127192

 13123588

 13122816

# Harmonies

## Analogous

The Analogous color harmony consists of three colors that are next to each other on the color wheel.



13348269



13152164



12628639

# Triad

The Triadic color harmony groups three colors that are evenly spaced from another and form a triangle on the color wheel.



13152164



10402480



11711176

# Complementary

The Complementary color scheme is a pair of colors which are on the opposite of each other on the color wheel.



13152164



10796488

# Split Complementary

Split-complementary colors differ from the complementary color scheme. The scheme consists of three colors, the original color and two neighbors of the complement color.



10860232



13152164



10140347

# Square

The Square scheme is like the rectangle color scheme, but the four colors are evenly spaced on the color wheel.



13152164



11057319



10271172



12562369

# Rectangle

The Rectangle color scheme consists of four colors that form a rectangle on the color wheel.



13152164



12170399



10271172



11449544



# Sweetspot

The Sweet Spot groups the original color and five complimentary colors.



13152164



16774898



13149373



8419960



0



8421504



# Same Dimension

The Same Dimension uses a secret algorithm to generate beautiful new colors.



13152164



16767175



13156772



6511962



10695168



2362112

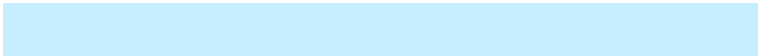


# Inverse Universe

The Inverse Universe completely reimagines the original color for something new.



10796488



13102847



10791880



5922915



29091

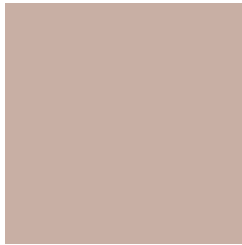


6436



# Previews

## White Background



This preview shows how the Decimal color 13152164 looks on a white background.

## Color Contrast Check

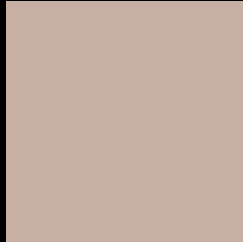
Large Text (above 18pt) WCAG AA × Fail

Any Text WCAG AA × Fail

Large Text (above 18pt) WCAG AAA × Fail

Any Text WCAG AAA × Fail

# Black Background



This preview shows how the Decimal color 13152164 looks on a black background.

## Color Contrast Check

Large Text (above 18pt) WCAG AA ✓ Pass

Any Text WCAG AA ✓ Pass

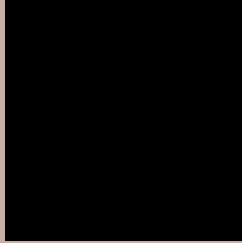
Large Text (above 18pt) WCAG AAA ✓ Pass

Any Text WCAG AAA ✓ Pass

If you want to check with other color combinations, try the [Color Contrast Checker](#).



## Decimal 13152164 Background



This preview shows how black text looks on a background with the Decimal color 13152164.



This preview shows how white text looks on a background with the Decimal color 13152164.

# Color Blindness Simulation

Color vision deficiency is a very complex topic, and I could not describe the different causes any better than Wikipedia does, so if you want to learn more, you should check out their [article about color blindness](#).

## Dichromacy



**Original Color**  
13152164

**Protanopia**  
12301222

**Deuteranopia**  
13348516



**Tritanopia**  
13348025

# Trichromacy



**Original Color**  
13152164

**Protanomaly**  
12628645

**Deuteranomaly**  
13282980

**Tritanomaly**  
13282737

# Monochromacy



**Original Color**  
13152164

**Achromatopsia**  
11908533

**Achromatomaly**  
12366767

# CSS Examples

## Text

The CSS property to change the color of the text to Decimal 13152164 is called "color". The color property can be set on classes, ids or directly on the HTML element.

This example shows how text in the color #C8AFA4 looks like.

```
.text, #text, p{  
    color:#C8AFA4  
}
```

If you want to add a text shadow in that color use the text-shadow property, you can generate a text shadow directly with our [CSS Text Shadow Generator](#).

Here you see how black text with a 4 pixel #C8AFA4 colored shadow looks like.

```
.shadow{ text-shadow: 4px 4px 2px #C8AFA4
}
```

## Border

The CSS property to change the border of an element to Decimal 13152164 is called "border". The border property can be set on classes, ids or directly on the HTML element.

This example shows the color as border, it can be applied via the CSS property "border" or "border-color".

```
.border, #border, table{ border:4px solid
#C8AFA4 }
```

If only the border color should be changed use the property `border-color`.

```
.border{ border-color:#C8AFA4 }
```

If you want to add a box shadow in that color use:

Here you see how a box with a 4 pixel #C8AFA4 colored shadow looks like.

```
.boxshadow{ -moz-box-shadow:4px 4px 4px  
4px #C8AFA4; -webkit-box-shadow:4px 4px  
4px 4px #C8AFA4; box-shadow:4px 4px 4px  
4px #C8AFA4 }
```

# Background

The CSS property to change the background color of an element to Decimal 13152164 is called "background". The background property can be set on classes, ids or directly on the HTML element.

```
.background, #background, body{  
background:#C8AFA4 }
```

If only the background color should be changed can be used:

```
.background{ background-color:#C8AFA4 }
```

This example shows the color as background, it is applied via the CSS property "background".

To optimize and compress your CSS code, you can use our [online CSS compressor and optimizer](#) based on csstidy. If you want to create a linear or radial gradient as background or border, check our [CSS Gradient Generator](#).



Hey! You found this booklet interesting? Support Converting Colors with the new Membership Option!

The pro membership hides all ads, plus gives you double the colors in the color bucket, and more awesome pro features!

**[Learn more, Memberships starting at \\$2.50/m!](#)**

**Follow me  
on Twitter!**

@ConvertingColor