

# Converting Colors

Decimal(13214113)

Have a look what the booklet for  
Decimal(13214113) contains.

<b>Decimal(13214113)</b> .....	3
<i><b>Conversions</b></i> .....	4
<i><b>Details</b></i> .....	6
<i><b>Harmonies</b></i> .....	11
<i><b>Previews</b></i> .....	23
<i><b>Color Blindness Simulation</b></i> .....	26
<i><b>CSS Examples</b></i> .....	29

# **Color**

**Decimal(13214113)**

# Conversions

## Conversions Part 1

<b>Format</b>	<b>Color</b>
Hex	C9A1A1
RGB	201, 161, 161
RGB Percent	79%, 63%, 63%
CMY	0.2118, 0.3686, 0.3686
CMYK	0.00, 0.20, 0.20, 0.21
HSL	0°, 27%, 71%
HSV	0°, 20%, 79%
XYZ	43.2653, 40.4805, 39.2514
YIQ	172.9600, 23.8400, 8.4800

# Conversions

## Conversions Part 2

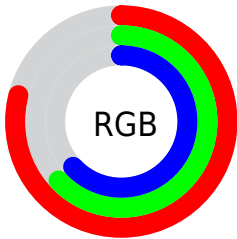
Format	Color
R <sub>Y</sub> B	201, 161, 161
Decimal	13214113
CIE Lab	69.81, 14.75, 5.61
CIE LCh	70, 15.782, 20.816
Yxy	40.4805, 0.3518, 0.3291
Android (android.graphics.Color)	4291404193 (0xFFC9A1A1)
YUV	172.9600, -5.8963, 24.5911
Hunter-Lab	63.6243, 10.0398, 7.9595

# Details

The Decimal color **13214113** is a light color, and the websafe version is hex **CC9999**. A complement of this color would be **10602953**, and the grayscale version is **11382189**.

A 20% lighter version of the original color is **16767192**, and **9596270** is the 20% darker color. If you saturate the color by 10%, you get **13208973**, and if you desaturate by 10%, it is **13219253**.

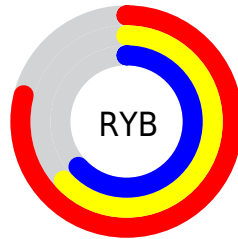
# Distribution



Red (79%)

Green (63%)

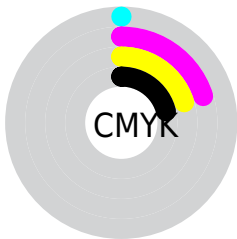
Blue (63%)



Red (79%)

Yellow (63%)

Blue (63%)

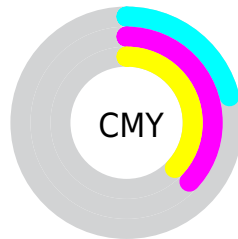


Cyan (0%)

Magenta (20%)

Yellow (20%)

Black (21%)



Cyan (21%)

Magenta (37%)

Yellow (37%)

# Brightness & Saturation Gradients

These gradients show how the Decimal color 13214113 changes by changing the brightness by 10 percent. The first figure shows a shift by +10% for each color and the second figure -10%.

Similar to the brightness gradients but the following saturation gradients show a change of the Decimal color 13214113 by changing the saturation by 10% instead.



 13214113

 13214113

16777215

 11372423

 16767192

 9596270

 16774388

 7886165

 6241598

 4597544

 3084820

 1769473

 0

 13214113

 13214113

 13208973


 13219253

 13203833


 13224393

 13198693


 13229533


 13193553


 13234673

 13188413

 13238271

 13183016

 13177876

 13172736

# Harmonies

## Analogous

The Analogous color harmony consists of three colors that are next to each other on the color wheel.



12951984



13214113



12952725

# Triad

The Triadic color harmony groups three colors that are evenly spaced from another and form a triangle on the color wheel.



13214113



10203544



9809350

# Complementary

The Complementary color scheme is a pair of colors which are on the opposite of each other on the color wheel.



13214113



10602953

# Split Complementary

Split-complementary colors differ from the complementary color scheme. The scheme consists of three colors, the original color and two neighbors of the complement color.



8958400



13214113



9286565

# Square

The Square scheme is like the rectangle color scheme, but the four colors are evenly spaced on the color wheel.



13214113



11251088



8762292



11053253

# Rectangle

The Rectangle color scheme consists of four colors that form a rectangle on the color wheel.



13214113



12494736



8762292



9482181

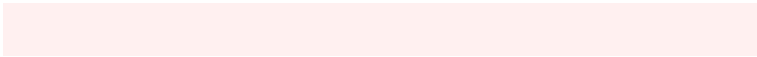


# Sweetspot

The Sweet Spot groups the original color and five complimentary colors.



13214113



16773360



13214153



8419191



0



8421504



# Same Dimension

The Same Dimension uses a secret algorithm to generate beautiful new colors.



13214113



16761538



13219233



6511194



10682368



2359296



# Inverse Universe

The Inverse Universe completely reimagines the original color for something new.



10602953



12779519



10597833



5923683



41891

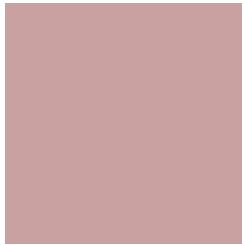


9252



# Previews

## White Background



This preview shows how the Decimal color 13214113 looks on a white background.

## Color Contrast Check

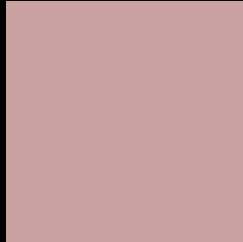
Large Text (above 18pt) WCAG AA × Fail

Any Text WCAG AA × Fail

Large Text (above 18pt) WCAG AAA × Fail

Any Text WCAG AAA × Fail

# Black Background



This preview shows how the Decimal color 13214113 looks on a black background.

## Color Contrast Check

Large Text (above 18pt) WCAG AA ✓ Pass

Any Text WCAG AA ✓ Pass

Large Text (above 18pt) WCAG AAA ✓ Pass

Any Text WCAG AAA ✓ Pass

If you want to check with other color combinations, try the [Color Contrast Checker](#).



## Decimal 13214113 Background



This preview shows how black text looks on a background with the Decimal color 13214113.

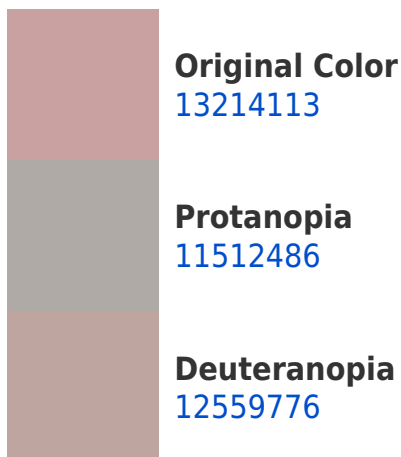



This preview shows how white text looks on a background with the Decimal color 13214113.

# Color Blindness Simulation

Color vision deficiency is a very complex topic, and I could not describe the different causes any better than Wikipedia does, so if you want to learn more, you should check out their [article about color blindness](#).

## Dichromacy





**Tritanopia**  
13279148

# Trichromacy



**Original Color**  
13214113

**Protanomaly**  
12101540

**Deuteranomaly**  
12821664

**Tritanomaly**  
13279400

# Monochromacy



**Original Color**  
13214113

**Achromatopsia**  
11382189

**Achromatomaly**  
12036521

# CSS Examples

## Text

The CSS property to change the color of the text to Decimal 13214113 is called "color". The color property can be set on classes, ids or directly on the HTML element.

This example shows how text in the color #C9A1A1 looks like.

```
.text, #text, p{  
    color:#C9A1A1  
}
```

If you want to add a text shadow in that color use the text-shadow property, you can generate a text shadow directly with our [CSS Text Shadow Generator](#).

Here you see how black text with a 4 pixel #C9A1A1 colored shadow looks like.

```
.shadow{ text-shadow: 4px 4px 2px #C9A1A1
}
```

## Border

The CSS property to change the border of an element to Decimal 13214113 is called "border". The border property can be set on classes, ids or directly on the HTML element.

This example shows the color as border, it can be applied via the CSS property "border" or "border-color".

```
.border, #border, table{ border:4px solid
#C9A1A1 }
```

If only the border color should be changed use the property `border-color`.

```
.border{ border-color:#C9A1A1 }
```

If you want to add a box shadow in that color use:

Here you see how a box with a 4 pixel #C9A1A1 colored shadow looks like.

```
.boxshadow{ -moz-box-shadow:4px 4px 4px  
4px #C9A1A1; -webkit-box-shadow:4px 4px  
4px 4px #C9A1A1; box-shadow:4px 4px 4px  
4px #C9A1A1 }
```

# Background

The CSS property to change the background color of an element to Decimal 13214113 is called "background". The background property can be set on classes, ids or directly on the HTML element.

```
.background, #background, body{  
background:#C9A1A1 }
```

If only the background color should be changed can be used:

```
.background{ background-color:#C9A1A1 }
```

This example shows the color as background, it is applied via the CSS property "background".

To optimize and compress your CSS code, you can use our [online CSS compressor and optimizer](#) based on csstidy. If you want to create a linear or radial gradient as background or border, check our [CSS Gradient Generator](#).



Hey! You found this booklet interesting? Support Converting Colors with the new Membership Option!

The pro membership hides all ads, plus gives you double the colors in the color bucket, and more awesome pro features!

**[Learn more, Memberships starting at \\$2.50/m!](#)**

**Follow me  
on Twitter!**

@ConvertingColor