

Converting Colors

Decimal(13215715)

Have a look what the booklet for
Decimal(13215715) contains.

Decimal(13215715)	3
<i>Conversions</i>	4
<i>Details</i>	6
<i>Harmonies</i>	11
<i>Previews</i>	23
<i>Color Blindness Simulation</i>	26
<i>CSS Examples</i>	29

Color

Decimal(13215715)

Conversions

Conversions Part 1

Format	Color
Hex	C9A7E3
RGB	201, 167, 227
RGB Percent	79%, 65%, 89%
CMY	0.2118, 0.3451, 0.1098
CMYK	0.11, 0.26, 0.00, 0.11
HSL	274°, 52%, 77%
HSV	274°, 26%, 89%
XYZ	51.7712, 45.6010, 78.7463
YIQ	184.0060, 1.0040, 25.8680

Conversions

Conversions Part 2

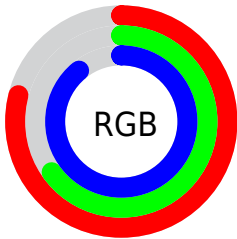
Format	Color
R _Y B	201, 167, 227
Decimal	13215715
CIE _{Lab}	73.29, 23.49, -25.58
CIE _{LCh}	73, 34.727, 312.553
Yxy	45.6010, 0.2940, 0.2589
Android (android.graphics.Color)	4291405795 (0xFFC9A7E3)
YUV	184.0060, 21.1960, 14.9037
Hunter-Lab	67.5285, 18.6735, -21.8692

Details

The Decimal color **13215715** is a light color, and the websafe version is hex **CC99CC**. A complement of this color would be **12706727**, and the grayscale version is **12105912**.

A 20% lighter version of the original color is **16768767**, and **9597867** is the 20% darker color. If you saturate the color by 10%, you get **12554467**, and if you desaturate by 10%, it is **13876963**.

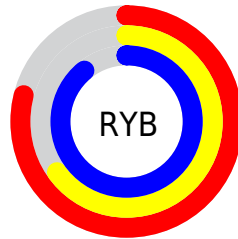
Distribution



Red (79%)

Green (65%)

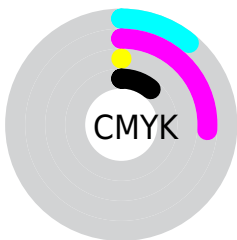
Blue (89%)



Red (79%)

Yellow (65%)

Blue (89%)

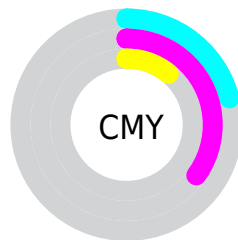


Cyan (11%)

Magenta (26%)

Yellow (0%)

Black (11%)



Cyan (21%)

Magenta (35%)

Yellow (11%)

Brightness & Saturation Gradients


These gradients show how the Decimal color 13215715 changes by changing the brightness by 10 percent. The first figure shows a shift by +10% for each color and the second figure -10%.

Similar to the brightness gradients but the following saturation gradients show a change of the Decimal color 13215715 by changing the saturation by 10% instead.

 13215715

 13215715

16777215

 11373767

 16768767

 9597867

 16776191

 7887505

 6242935

 4598622

 3085894

 1703984

 282

 0

 13215715

 13215715

 12554467

 13876963

 11893475

 14537955

 11232227

 15199203

 10636515

 15794147

 9975523

 16449507

 9314275

 16777187

 8653027

 8454371

Harmonies

Analogous

The Analogous color harmony consists of three colors that are next to each other on the color wheel.



10334962



13215715



15179464

Triad

The Triadic color harmony groups three colors that are evenly spaced from another and form a triangle on the color wheel.



13215715



14331000



5227969

Complementary

The Complementary color scheme is a pair of colors which are on the opposite of each other on the color wheel.



13215715



12706727

Split Complementary

Split-complementary colors differ from the complementary color scheme. The scheme consists of three colors, the original color and two neighbors of the complement color.



7586976



13215715



12367477

Square

The Square scheme is like the rectangle color scheme, but the four colors are evenly spaced on the color wheel.



13215715



15638922



10076036



4703198

Rectangle

The Rectangle color scheme consists of four colors that form a rectangle on the color wheel.



13215715



15834290



10076036



5948854

Sweetspot

The Sweet Spot groups the original color and five complimentary colors.



13215715



16182271



10994147



8024960



0



8421504

Same Dimension

The Same Dimension uses a secret algorithm to generate beautiful new colors.



13215715



14462463



14919647



7235443



6619315



1900595

Inverse Universe

The Inverse Universe completely reimagines the original color for something new.



14919617



16756177



11002795



7563116



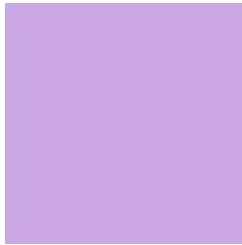
11731021



3342358

Previews

White Background



This preview shows how the Decimal color 13215715 looks on a white background.

Color Contrast Check

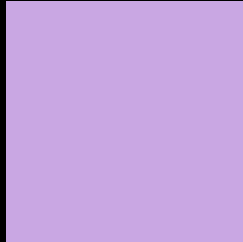
Large Text (above 18pt) WCAG AA × Fail

Any Text WCAG AA × Fail

Large Text (above 18pt) WCAG AAA × Fail

Any Text WCAG AAA × Fail

Black Background



This preview shows how the Decimal color 13215715 looks on a black background.

Color Contrast Check

Large Text (above 18pt) WCAG AA ✓ Pass

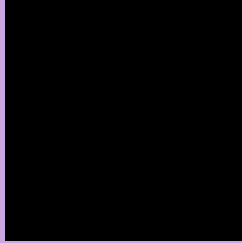
Any Text WCAG AA ✓ Pass

Large Text (above 18pt) WCAG AAA ✓ Pass

Any Text WCAG AAA ✓ Pass

If you want to check with other color combinations, try the [Color Contrast Checker](#).

Decimal 13215715 Background



This preview shows how black text looks on a background with the Decimal color 13215715.

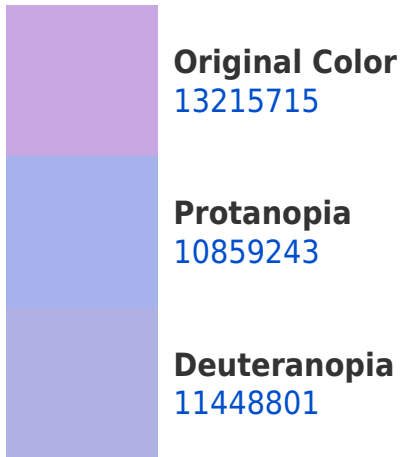


This preview shows how white text looks on a background with the Decimal color 13215715.

Color Blindness Simulation

Color vision deficiency is a very complex topic, and I could not describe the different causes any better than Wikipedia does, so if you want to learn more, you should check out their [article about color blindness](#).

Dichromacy





Tritanopia
12824252

Trichromacy



Original Color
13215715



Protanomaly
11710184



Deuteranomaly
12103138



Tritanomaly
12954570

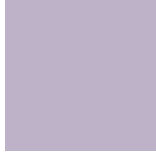
Monochromacy



Original Color
13215715



Achromatopsia
12105912



Achromatomaly
12497608

CSS Examples

Text

The CSS property to change the color of the text to Decimal 13215715 is called "color". The color property can be set on classes, ids or directly on the HTML element.

This example shows how text in the color #C9A7E3 looks like.

```
.text, #text, p{  
    color:#C9A7E3  
}
```

If you want to add a text shadow in that color use the text-shadow property, you can generate a text shadow directly with our [CSS Text Shadow Generator](#).

Here you see how black text with a 4 pixel #C9A7E3 colored shadow looks like.

```
.shadow{ text-shadow: 4px 4px 2px #C9A7E3
}
```

Border

The CSS property to change the border of an element to Decimal 13215715 is called "border". The border property can be set on classes, ids or directly on the HTML element.

This example shows the color as border, it can be applied via the CSS property "border" or "border-color".

```
.border, #border, table{ border:4px solid
#C9A7E3 }
```

If only the border color should be changed use the property `border-color`.

```
.border{ border-color:#C9A7E3 }
```

If you want to add a box shadow in that color use:

Here you see how a box with a 4 pixel #C9A7E3 colored shadow looks like.

```
.boxshadow{ -moz-box-shadow:4px 4px 4px  
4px #C9A7E3; -webkit-box-shadow:4px 4px  
4px 4px #C9A7E3; box-shadow:4px 4px 4px  
4px #C9A7E3 }
```

Background

The CSS property to change the background color of an element to Decimal 13215715 is called "background". The background property can be set on classes, ids or directly on the HTML element.

```
.background, #background, body{  
background:#C9A7E3 }
```

If only the background color should be changed can be used:

```
.background{ background-color:#C9A7E3 }
```

This example shows the color as background, it is applied via the CSS property "background".

To optimize and compress your CSS code, you can use our [online CSS compressor and optimizer](#) based on csstidy. If you want to create a linear or radial gradient as background or border, check our [CSS Gradient Generator](#).

Hey! You found this booklet interesting? Support Converting Colors with the new Membership Option!

The pro membership hides all ads, plus gives you double the colors in the color bucket, and more awesome pro features!

[Learn more, Memberships starting at \\$2.50/m!](#)

**Follow me
on Twitter!**

@ConvertingColor