

Converting Colors

Decimal(13265028)

Have a look what the booklet for
Decimal(13265028) contains.

Decimal(13265028)	3
<i>Conversions</i>	4
<i>Details</i>	6
<i>Harmonies</i>	11
<i>Previews</i>	23
<i>Color Blindness Simulation</i>	26
<i>CSS Examples</i>	29

Color

Decimal(13265028)

Conversions

Conversions Part 1

Format	Color
Hex	CA6884
RGB	202, 104, 132
RGB Percent	79%, 41%, 52%
CMY	0.2078, 0.5922, 0.4824
CMYK	0.00, 0.49, 0.35, 0.21
HSL	343°, 48%, 60%
HSV	343°, 49%, 79%
XYZ	33.4723, 24.1231, 24.7218
YIQ	136.4940, 49.4200, 29.4840

Conversions

Conversions Part 2

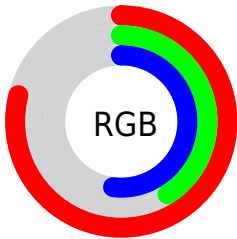
Format	Color
R_{YB}	202, 104, 132
Decimal	13265028
CIE _{Lab}	56.21, 41.84, 2.49
CIE _{LCh}	56, 41.910, 3.405
Yxy	24.1231, 0.4066, 0.2931
Android (android.graphics.Color)	4291455108 (0xFFCA6884)
YUV	136.4940, -2.2155, 57.4488
Hunter-Lab	49.1153, 35.6968, 4.5375

Details

The Decimal color **13265028** is a dark color, and the websafe version is hex **CC6699**. A complement of this color would be **6867630**, and the grayscale version is **8947848**.

A 20% lighter version of the original color is **16752057**, and **9516115** is the 20% darker color. If you saturate the color by 10%, you get **13259894**, and if you desaturate by 10%, it is **13270162**.

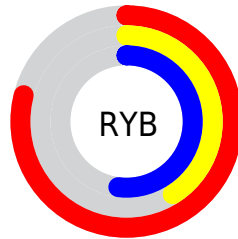
Distribution



Red (79%)

Green (41%)

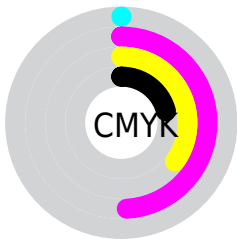
Blue (52%)



Red (79%)

Yellow (41%)

Blue (52%)

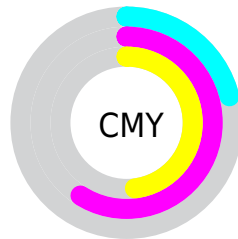


Cyan (0%)

Magenta (49%)

Yellow (35%)

Black (21%)



Cyan (21%)

Magenta (59%)

Yellow (48%)

Brightness & Saturation Gradients

These gradients show how the Decimal color 13265028 changes by changing the brightness by 10 percent. The first figure shows a shift by +10% for each color and the second figure -10%.

Similar to the brightness gradients but the following saturation gradients show a change of the Decimal color 13265028 by changing the saturation by 10% instead.

 13265028

 13265028

16777215

 11357803

 16752057

 9516115

 16759253

 7674172

 16766449

 5898278

 16773887

 4194321

 2555905

 0

 13265028

 13265028

 13259894

 13270162

13254759

13275297

13249369

13280687

13244234

13285822

13239100

13290956

13238330

13296091

13301225

13303799

13303807

Harmonies

Analogous

The Analogous color harmony consists of three colors that are next to each other on the color wheel.



12021416



13265028



13200737

Triad

The Triadic color harmony groups three colors that are evenly spaced from another and form a triangle on the color wheel.



13265028



7573576



37831

Complementary

The Complementary color scheme is a pair of colors which are on the opposite of each other on the color wheel.



13265028



6867630

Split Complementary

Split-complementary colors differ from the complementary color scheme. The scheme consists of three colors, the original color and two neighbors of the complement color.



39086



13265028



4364133

Square

The Square scheme is like the rectangle color scheme, but the four colors are evenly spaced on the color wheel.



13265028



9995836



39306



5212623

Rectangle

The Rectangle color scheme consists of four colors that form a rectangle on the color wheel.



13265028



12481869



39306



38336

Sweetspot

The Sweet Spot groups the original color and five complimentary colors.



13265028



16767460



11364554



8415599



0



8421504

Same Dimension

The Same Dimension uses a secret algorithm to generate beautiful new colors.



13265028



16739221



13270120



6708319



10879023



2490379

Inverse Universe

The Inverse Universe completely reimagines the original color for something new.



13265028



16739221



6862538



6708319



10879023



2490379

Previews

White Background



This preview shows how the Decimal color 13265028 looks on a white background.

Color Contrast Check

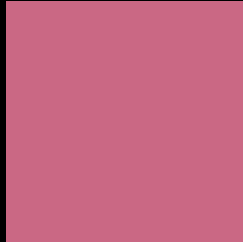
Large Text (above 18pt) WCAG AA ✓ Pass

Any Text WCAG AA ✗ Fail

Large Text (above 18pt) WCAG AAA ✗ Fail

Any Text WCAG AAA ✗ Fail

Black Background



This preview shows how the Decimal color 13265028 looks on a black background.

Color Contrast Check

Large Text (above 18pt) WCAG AA ✓ Pass

Any Text WCAG AA ✓ Pass

Large Text (above 18pt) WCAG AAA ✓ Pass

Any Text WCAG AAA × Fail

If you want to check with other color combinations, try the [Color Contrast Checker](#).

Decimal 13265028 Background



This preview shows how black text looks on a background with the Decimal color 13265028.



This preview shows how white text looks on a background with the Decimal color 13265028.

Color Blindness Simulation

Color vision deficiency is a very complex topic, and I could not describe the different causes any better than Wikipedia does, so if you want to learn more, you should check out their [article about color blindness](#).

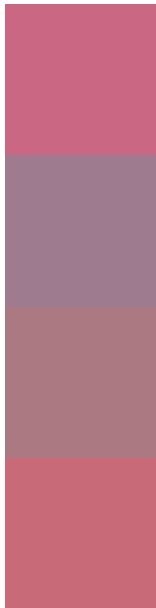
Dichromacy





Tritanopia
13200243

Trichromacy



Original Color
13265028

Protanomaly
10386319

Deuteranomaly
11172225

Tritanomaly
13199993

Monochromacy



Original Color
13265028

Achromatopsia
8947848

Achromatomaly
10517639

CSS Examples

Text

The CSS property to change the color of the text to Decimal 13265028 is called "color". The color property can be set on classes, ids or directly on the HTML element.

This example shows how text in the color #CA6884 looks like.

```
.text, #text, p{  
  color:#CA6884  
}
```

If you want to add a text shadow in that color use the text-shadow property, you can generate a text shadow directly with our [CSS Text Shadow Generator](#).

Here you see how black text with a 4 pixel #CA6884 colored shadow looks like.

```
.shadow{ text-shadow: 4px 4px 2px #CA6884
}
```

Border

The CSS property to change the border of an element to Decimal 13265028 is called "border". The border property can be set on classes, ids or directly on the HTML element.

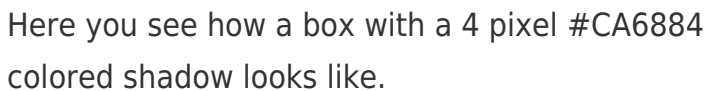
This example shows the color as border, it can be applied via the CSS property "border" or "border-color".

```
.border, #border, table{ border:4px solid
#CA6884 }
```

If only the border color should be changed use the property `border-color`.

```
.border{ border-color:#CA6884 }
```

If you want to add a box shadow in that color use:



Here you see how a box with a 4 pixel `#CA6884` colored shadow looks like.

```
.boxshadow{ -moz-box-shadow:4px 4px 4px  
4px #CA6884; -webkit-box-shadow:4px 4px  
4px 4px #CA6884; box-shadow:4px 4px 4px  
4px #CA6884 }
```

Background

The CSS property to change the background color of an element to Decimal 13265028 is called "background". The background property can be set on classes, ids or directly on the HTML element.

```
.background, #background, body{  
background:#CA6884 }
```

If only the background color should be changed can be used:

```
.background{ background-color:#CA6884 }
```

This example shows the color as background, it is applied via the CSS property "background".

To optimize and compress your CSS code, you can use our [online CSS compressor and optimizer](#) based on csstidy. If you want to create a linear or radial gradient as background or border, check our [CSS Gradient Generator](#).

Hey! You found this booklet interesting? Support Converting Colors with the new Membership Option!

The pro membership hides all ads, plus gives you double the colors in the color bucket, and more awesome pro features!

[Learn more, Memberships starting at \\$2.50/m!](#)

**Follow me
on Twitter!**

@ConvertingColor