

Converting Colors

Decimal(13273220)

Have a look what the booklet for
Decimal(13273220) contains.

Decimal(13273220)	3
<i>Conversions</i>	4
<i>Details</i>	6
<i>Harmonies</i>	11
<i>Previews</i>	23
<i>Color Blindness Simulation</i>	26
<i>CSS Examples</i>	29

Color

Decimal(13273220)

Conversions

Conversions Part 1

Format	Color
Hex	CA8884
RGB	202, 136, 132
RGB Percent	79%, 53%, 52%
CMY	0.2078, 0.4667, 0.4824
CMYK	0.00, 0.33, 0.35, 0.21
HSL	3°, 40%, 65%
HSV	3°, 35%, 79%
XYZ	37.3261, 31.8308, 26.0065
YIQ	155.2780, 40.6200, 12.7480

Conversions

Conversions Part 2

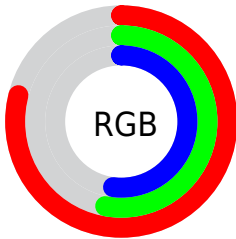
Format	Color
R _Y B	202, 136, 132
Decimal	13273220
CIE Lab	63.20, 24.76, 12.47
CIE LCh	63, 27.722, 26.724
Yxy	31.8308, 0.3922, 0.3345
Android (android.graphics.Color)	4291463300 (0xFFCA8884)
YUV	155.2780, -11.4761, 40.9752
Hunter-Lab	56.4188, 19.3610, 12.1632

Details

The Decimal color **13273220** is a light color, and the websafe version is hex **CC9999**. A complement of this color would be **8701642**, and the grayscale version is **10197915**.

A 20% lighter version of the original color is **16760505**, and **9590099** is the 20% darker color. If you saturate the color by 10%, you get **13268336**, and if you desaturate by 10%, it is **13278104**.

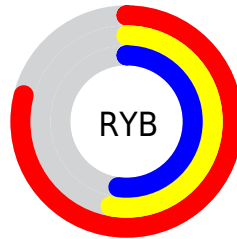
Distribution



Red (79%)

Green (53%)

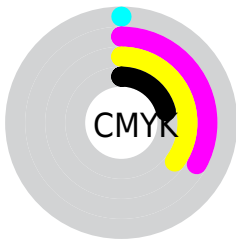
Blue (52%)



Red (79%)

Yellow (53%)

Blue (52%)

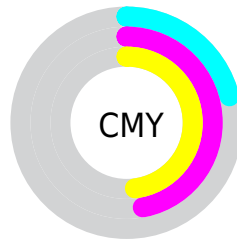


Cyan (0%)

Magenta (33%)

Yellow (35%)

Black (21%)



Cyan (21%)

Magenta (47%)

Yellow (48%)

Brightness & Saturation Gradients

These gradients show how the Decimal color 13273220 changes by changing the brightness by 10 percent. The first figure shows a shift by +10% for each color and the second figure -10%.

Similar to the brightness gradients but the following saturation gradients show a change of the Decimal color 13273220 by changing the saturation by 10% instead.

 13273220

 13273220

16777215

 11431531

 16760505

 9590099

 16767701

 7814460

 16774897

 6104614

 4395025

 2883584

 0

 13273220

 13273220

 13268336

 13278104

 13263452

 13282988

 13258567

 13287873

 13253683

 13292757

 13248799

 13297641

 13243915

 13302525

 13241344

 13303807

Harmonies

Analogous

The Analogous color harmony consists of three colors that are next to each other on the color wheel.



13076381



13273220



12619377

Triad

The Triadic color harmony groups three colors that are evenly spaced from another and form a triangle on the color wheel.



13273220



7840893



7707850

Complementary

The Complementary color scheme is a pair of colors which are on the opposite of each other on the color wheel.



13273220



8701642

Split Complementary

Split-complementary colors differ from the complementary color scheme. The scheme consists of three colors, the original color and two neighbors of the complement color.



5546945



13273220



6006421

Square

The Square scheme is like the rectangle color scheme, but the four colors are evenly spaced on the color wheel.



13273220



9674348



4892334



10065093

Rectangle

The Rectangle color scheme consists of four colors that form a rectangle on the color wheel.



13273220



11834473



4892334



6922184

Sweetspot

The Sweet Spot groups the original color and five complimentary colors.



13273220



16771046



13272263



8417648



0



8421504

Same Dimension

The Same Dimension uses a secret algorithm to generate beautiful new colors.



13273220



16751252



13282180



6708316



10881280



2490880

Inverse Universe

The Inverse Universe completely reimagines the original color for something new.



8701642



9763327



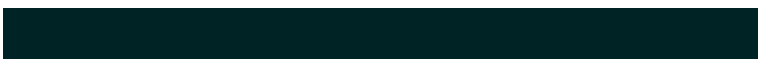
8692938



6055270



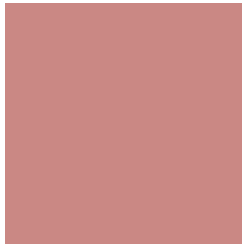
40102



9254

Previews

White Background



This preview shows how the Decimal color 13273220 looks on a white background.

Color Contrast Check

Large Text (above 18pt) WCAG AA × Fail

Any Text WCAG AA × Fail

Large Text (above 18pt) WCAG AAA × Fail

Any Text WCAG AAA × Fail

Black Background



This preview shows how the Decimal color 13273220 looks on a black background.

Color Contrast Check

Large Text (above 18pt) WCAG AA ✓ Pass

Any Text WCAG AA ✓ Pass

Large Text (above 18pt) WCAG AAA ✓ Pass

Any Text WCAG AAA ✓ Pass

If you want to check with other color combinations, try the [Color Contrast Checker](#).

Decimal 13273220 Background



This preview shows how black text looks on a background with the Decimal color 13273220.




This preview shows how white text looks on a background with the Decimal color 13273220.

Color Blindness Simulation

Color vision deficiency is a very complex topic, and I could not describe the different causes any better than Wikipedia does, so if you want to learn more, you should check out their [article about color blindness](#).

Dichromacy





Tritanopia
13338256

Trichromacy



Original Color
13273220

Protanomaly
11506570

Deuteranomaly
12161155

Tritanomaly
13338508

Monochromacy



Original Color
13273220

Achromatopsia
10197915

Achromatomaly
11310227

CSS Examples

Text

The CSS property to change the color of the text to Decimal 13273220 is called "color". The color property can be set on classes, ids or directly on the HTML element.

This example shows how text in the color #CA8884 looks like.

```
.text, #text, p{  
    color:#CA8884  
}
```

If you want to add a text shadow in that color use the text-shadow property, you can generate a text shadow directly with our [CSS Text Shadow Generator](#).

Here you see how black text with a 4 pixel #CA8884 colored shadow looks like.

```
.shadow{ text-shadow: 4px 4px 2px #CA8884
}
```

Border

The CSS property to change the border of an element to Decimal 13273220 is called "border". The border property can be set on classes, ids or directly on the HTML element.

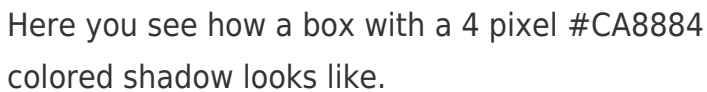
This example shows the color as border, it can be applied via the CSS property "border" or "border-color".

```
.border, #border, table{ border:4px solid
#CA8884 }
```

If only the border color should be changed use the property `border-color`.

```
.border{ border-color:#CA8884 }
```

If you want to add a box shadow in that color use:



Here you see how a box with a 4 pixel #CA8884 colored shadow looks like.

```
.boxshadow{ -moz-box-shadow:4px 4px 4px  
4px #CA8884; -webkit-box-shadow:4px 4px  
4px 4px #CA8884; box-shadow:4px 4px 4px  
4px #CA8884 }
```

Background

The CSS property to change the background color of an element to Decimal 13273220 is called "background". The background property can be set on classes, ids or directly on the HTML element.

```
.background, #background, body{  
background:#CA8884 }
```

If only the background color should be changed can be used:

```
.background{ background-color:#CA8884 }
```

This example shows the color as background, it is applied via the CSS property "background".

To optimize and compress your CSS code, you can use our [online CSS compressor and optimizer](#) based on csstidy. If you want to create a linear or radial gradient as background or border, check our [CSS Gradient Generator](#).

Hey! You found this booklet interesting? Support Converting Colors with the new Membership Option!

The pro membership hides all ads, plus gives you double the colors in the color bucket, and more awesome pro features!

[Learn more, Memberships starting at \\$2.50/m!](#)

**Follow me
on Twitter!**

@ConvertingColor