

Converting Colors

Decimal(13275239)

Have a look what the booklet for
Decimal(13275239) contains.

Decimal(13275239)	3
<i>Conversions</i>	4
<i>Details</i>	6
<i>Harmonies</i>	11
<i>Previews</i>	23
<i>Color Blindness Simulation</i>	26
<i>CSS Examples</i>	29

Color

Decimal(13275239)

Conversions

Conversions Part 1

Format	Color
Hex	CA9067
RGB	202, 144, 103
RGB Percent	79%, 56%, 40%
CMY	0.2078, 0.4353, 0.5961
CMYK	0.00, 0.29, 0.49, 0.21
HSL	25°, 48%, 60%
HSV	25°, 49%, 79%
XYZ	36.7786, 33.4823, 17.3563
YIQ	156.6680, 47.7290, -0.4550

Conversions

Conversions Part 2

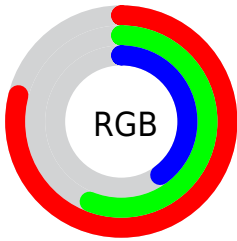
Format	Color
R _Y B	202, 173, 103
Decimal	13275239
CIE Lab	64.55, 17.16, 30.44
CIE LCh	65, 34.939, 60.592
Yxy	33.4823, 0.4198, 0.3821
Android (android.graphics.Color)	4291465319 (0xFFCA9067)
YUV	156.6680, -26.4583, 39.7562
Hunter-Lab	57.8639, 12.1935, 22.7207

Details

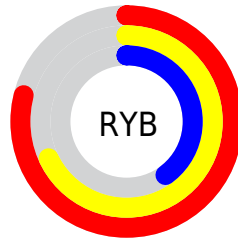
The Decimal color **13275239** is a light color, and the websafe version is hex **CC9966**. A complement of this color would be **6791626**, and the grayscale version is **10329501**.

A 20% lighter version of the original color is **16762523**, and **9526583** is the 20% darker color. If you saturate the color by 10%, you get **13272147**, and if you desaturate by 10%, it is **13278331**.

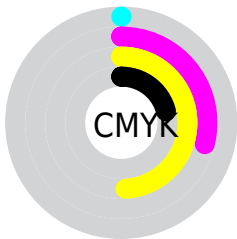
Distribution



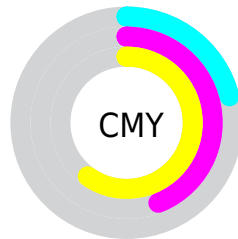
- Red (79%)
- Green (56%)
- Blue (40%)



- Red (79%)
- Yellow (68%)
- Blue (40%)



- Cyan (0%)
- Magenta (29%)
- Yellow (49%)
- Black (21%)



- Cyan (21%)
- Magenta (44%)
- Yellow (60%)

Brightness & Saturation Gradients

These gradients show how the Decimal color 13275239 changes by changing the brightness by 10 percent. The first figure shows a shift by +10% for each color and the second figure -10%.

Similar to the brightness gradients but the following saturation gradients show a change of the Decimal color 13275239 by changing the saturation by 10% instead.

 13275239

 13275239

16777215

 11368015

 16762523

 9526583

 16769718

 7751201

 16777169

 5975818

 16777198

 4266240

 2621952

 0

 13275239

 13275239

 13272147

 13278331

 13269055

 13281423

 13265962

 13284516

 13263126

 13287352

 13260034

 13290444

 13259776

 13293536

 13296628

 13299711

 13302783

Harmonies

Analogous

The Analogous color harmony consists of three colors that are next to each other on the color wheel.



14190462



13275239



11639646

Triad

The Triadic color harmony groups three colors that are evenly spaced from another and form a triangle on the color wheel.



13275239



4304284



10589394

Complementary

The Complementary color scheme is a pair of colors which are on the opposite of each other on the color wheel.



13275239



6791626

Split Complementary

Split-complementary colors differ from the complementary color scheme. The scheme consists of three colors, the original color and two neighbors of the complement color.



7380955



13275239



1748155

Square

The Square scheme is like the rectangle color scheme, but the four colors are evenly spaced on the color wheel.



13275239



7055997



3844306



12880572

Rectangle

The Rectangle color scheme consists of four colors that form a rectangle on the color wheel.



13275239



10199393



3844306



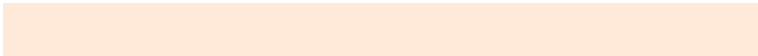
9607383

Sweetspot

The Sweet Spot groups the original color and five complimentary colors.



13275239



16771545



13264802



8417897



0



8421504

Same Dimension

The Same Dimension uses a secret algorithm to generate beautiful new colors.



13275239



16754537



13287527



6709340



10896640



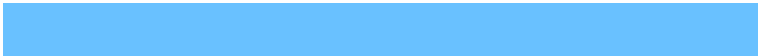
2494464

Inverse Universe

The Inverse Universe completely reimagines the original color for something new.



6791626



6930943



6779338



6054502



24998



5670

Previews

White Background



This preview shows how the Decimal color 13275239 looks on a white background.

Color Contrast Check

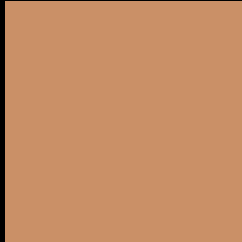
Large Text (above 18pt) WCAG AA × Fail

Any Text WCAG AA × Fail

Large Text (above 18pt) WCAG AAA × Fail

Any Text WCAG AAA × Fail

Black Background



This preview shows how the Decimal color 13275239 looks on a black background.

Color Contrast Check

Large Text (above 18pt) WCAG AA ✓ Pass

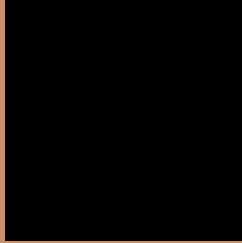
Any Text WCAG AA ✓ Pass

Large Text (above 18pt) WCAG AAA ✓ Pass

Any Text WCAG AAA ✓ Pass

If you want to check with other color combinations, try the [Color Contrast Checker](#).

Decimal 13275239 Background



This preview shows how black text looks on a background with the Decimal color 13275239.




This preview shows how white text looks on a background with the Decimal color 13275239.

Color Blindness Simulation

Color vision deficiency is a very complex topic, and I could not describe the different causes any better than Wikipedia does, so if you want to learn more, you should check out their [article about color blindness](#).

Dichromacy





Tritanopia
13535893

Trichromacy



Original Color
13275239

Protanomaly
11966570

Deuteranomaly
12751974

Tritanomaly
13470852

Monochromacy



Original Color
13275239

Achromatopsia
10329501

Achromatomaly
11376777

CSS Examples

Text

The CSS property to change the color of the text to Decimal 13275239 is called "color". The color property can be set on classes, ids or directly on the HTML element.

This example shows how text in the color #CA9067 looks like.

```
.text, #text, p{  
    color:#CA9067  
}
```

If you want to add a text shadow in that color use the text-shadow property, you can generate a text shadow directly with our [CSS Text Shadow Generator](#).

Here you see how black text with a 4 pixel #CA9067 colored shadow looks like.

```
.shadow{ text-shadow: 4px 4px 2px #CA9067
}
```

Border

The CSS property to change the border of an element to Decimal 13275239 is called "border". The border property can be set on classes, ids or directly on the HTML element.

This example shows the color as border, it can be applied via the CSS property "border" or "border-color".

```
.border, #border, table{ border:4px solid
#CA9067 }
```

If only the border color should be changed use the property `border-color`.

```
.border{ border-color:#CA9067 }
```

If you want to add a box shadow in that color use:

Here you see how a box with a 4 pixel #CA9067 colored shadow looks like.

```
.boxshadow{ -moz-box-shadow:4px 4px 4px  
4px #CA9067; -webkit-box-shadow:4px 4px  
4px 4px #CA9067; box-shadow:4px 4px 4px  
4px #CA9067 }
```

Background

The CSS property to change the background color of an element to Decimal 13275239 is called "background". The background property can be set on classes, ids or directly on the HTML element.

```
.background, #background, body{  
background:#CA9067 }
```

If only the background color should be changed can be used:

```
.background{ background-color:#CA9067 }
```

This example shows the color as background, it is applied via the CSS property "background".

To optimize and compress your CSS code, you can use our [online CSS compressor and optimizer](#) based on csstidy. If you want to create a linear or radial gradient as background or border, check our [CSS Gradient Generator](#).

Hey! You found this booklet interesting? Support Converting Colors with the new Membership Option!

The pro membership hides all ads, plus gives you double the colors in the color bucket, and more awesome pro features!

[Learn more, Memberships starting at \\$2.50/m!](#)

**Follow me
on Twitter!**

@ConvertingColor