

# Converting Colors

Decimal(13276050)

Have a look what the booklet for  
Decimal(13276050) contains.

<b>Decimal(13276050)</b> .....	3
<i><b>Conversions</b></i> .....	4
<i><b>Details</b></i> .....	6
<i><b>Harmonies</b></i> .....	11
<i><b>Previews</b></i> .....	23
<i><b>Color Blindness Simulation</b></i> .....	26
<i><b>CSS Examples</b></i> .....	29

# **Color**

**Decimal(13276050)**

# Conversions

## Conversions Part 1

Format	Color
Hex	CA9392
RGB	202, 147, 146
RGB Percent	79%, 58%, 57%
CMY	0.2078, 0.4235, 0.4275
CMYK	0.00, 0.27, 0.28, 0.21
HSL	1°, 35%, 68%
HSV	1°, 28%, 79%
XYZ	39.9791, 35.4993, 31.9391
YIQ	163.3310, 33.1010, 11.3490

# Conversions

## Conversions Part 2

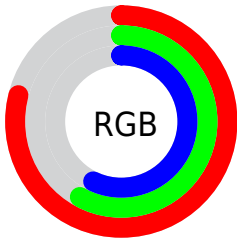
Format	Color
R <sub>Y</sub> B	202, 147, 146
Decimal	13276050
CIE Lab	66.14, 20.60, 8.73
CIE LCh	66, 22.369, 22.960
Yxy	35.4993, 0.3722, 0.3305
Android (android.graphics.Color)	4291466130 (0xFFCA9392)
YUV	163.3310, -8.5442, 33.9127
Hunter-Lab	59.5813, 15.5065, 9.9240

# Details

The Decimal color **13276050** is a light color, and the websafe version is hex **CC9999**. A complement of this color would be **9619914**, and the grayscale version is **10724259**.

A 20% lighter version of the original color is **16763336**, and **9658464** is the 20% darker color. If you saturate the color by 10%, you get **13270910**, and if you desaturate by 10%, it is **13281190**.

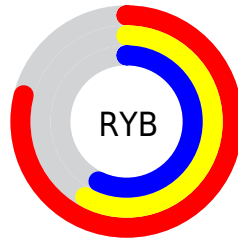
# Distribution



Red (79%)

Green (58%)

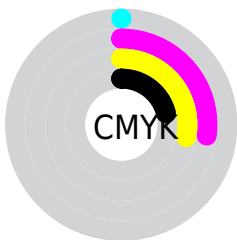
Blue (57%)



Red (79%)

Yellow (58%)

Blue (57%)

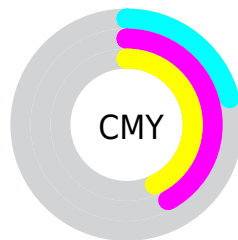


Cyan (0%)

Magenta (27%)

Yellow (28%)

Black (21%)



Cyan (21%)

Magenta (42%)

Yellow (43%)

# Brightness & Saturation Gradients

These gradients show how the Decimal color 13276050 changes by changing the brightness by 10 percent. The first figure shows a shift by +10% for each color and the second figure -10%.

Similar to the brightness gradients but the following saturation gradients show a change of the Decimal color 13276050 by changing the saturation by 10% instead.



 13276050

 13276050

16777215

 11434360

 16763336

 9658464

 16770532

 7882824

 6172977

 4528925

 3015682

 655360

 0

 13276050

 13276050

 13270910

 13281190

 13265770

 13286330

 13260629

 13291471

 13255745

 13296355

 13250605

 13301495

 13245465

 13303807

 13240325

 13239296

# Harmonies

## Analogous

The Analogous color harmony consists of three colors that are next to each other on the color wheel.



13013926



13276050



12818305

# Triad

The Triadic color harmony groups three colors that are evenly spaced from another and form a triangle on the color wheel.



13276050



8956296



8561864

# Complementary

The Complementary color scheme is a pair of colors which are on the opposite of each other on the color wheel.



13276050



9619914

# Split Complementary

Split-complementary colors differ from the complementary color scheme. The scheme consists of three colors, the original color and two neighbors of the complement color.



7186880



13276050



7580827

# Square

The Square scheme is like the rectangle color scheme, but the four colors are evenly spaced on the color wheel.



13276050



10462332



6859952



10395078

# Rectangle

The Rectangle color scheme consists of four colors that form a rectangle on the color wheel.



13276050



12229755



6859952



8038087



# Sweetspot

The Sweet Spot groups the original color and five complimentary colors.



13276050



16772075



13275849



8418163



0



8421504



# Same Dimension

The Same Dimension uses a secret algorithm to generate beautiful new colors.



13276050



16755883



13283218



6708316



10879744



2490624



# Inverse Universe

The Inverse Universe completely reimagines the original color for something new.



9619914



11271679



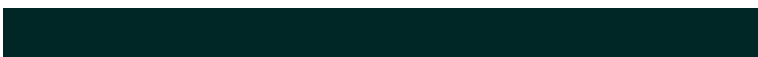
9612746



6055526



41894

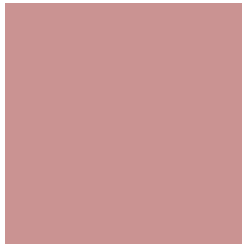


9766



# Previews

## White Background



This preview shows how the Decimal color 13276050 looks on a white background.

## Color Contrast Check

Large Text (above 18pt) WCAG AA × Fail

Any Text WCAG AA × Fail

Large Text (above 18pt) WCAG AAA × Fail

Any Text WCAG AAA × Fail

# Black Background



This preview shows how the Decimal color 13276050 looks on a black background.

## Color Contrast Check

Large Text (above 18pt) WCAG AA ✓ Pass

Any Text WCAG AA ✓ Pass

Large Text (above 18pt) WCAG AAA ✓ Pass

Any Text WCAG AAA ✓ Pass

If you want to check with other color combinations, try the [Color Contrast Checker](#).



## Decimal 13276050 Background



This preview shows how black text looks on a background with the Decimal color 13276050.



This preview shows how white text looks on a background with the Decimal color 13276050.

# Color Blindness Simulation

Color vision deficiency is a very complex topic, and I could not describe the different causes any better than Wikipedia does, so if you want to learn more, you should check out their [article about color blindness](#).

## Dichromacy





**Tritanopia**  
13341085

# Trichromacy



**Original Color**  
13276050

**Protanomaly**  
11770774

**Deuteranomaly**  
12490897

**Tritanomaly**  
13341337

# Monochromacy



**Original Color**  
13276050

**Achromatopsia**  
10724259

**Achromatomaly**  
11640221

# CSS Examples

## Text

The CSS property to change the color of the text to Decimal 13276050 is called "color". The color property can be set on classes, ids or directly on the HTML element.

This example shows how text in the color #CA9392 looks like.

```
.text, #text, p{  
    color:#CA9392  
}
```

If you want to add a text shadow in that color use the text-shadow property, you can generate a text shadow directly with our [CSS Text Shadow Generator](#).

Here you see how black text with a 4 pixel #CA9392 colored shadow looks like.

```
.shadow{ text-shadow: 4px 4px 2px #CA9392
}
```

## Border

The CSS property to change the border of an element to Decimal 13276050 is called "border". The border property can be set on classes, ids or directly on the HTML element.

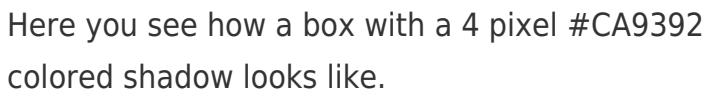
This example shows the color as border, it can be applied via the CSS property "border" or "border-color".

```
.border, #border, table{ border:4px solid
#CA9392 }
```

If only the border color should be changed use the property `border-color`.

```
.border{ border-color:#CA9392 }
```

If you want to add a box shadow in that color use:



Here you see how a box with a 4 pixel #CA9392 colored shadow looks like.

```
.boxshadow{ -moz-box-shadow:4px 4px 4px  
4px #CA9392; -webkit-box-shadow:4px 4px  
4px 4px #CA9392; box-shadow:4px 4px 4px  
4px #CA9392 }
```

# Background

The CSS property to change the background color of an element to Decimal 13276050 is called "background". The background property can be set on classes, ids or directly on the HTML element.

```
.background, #background, body{  
background:#CA9392 }
```

If only the background color should be changed can be used:

```
.background{ background-color:#CA9392 }
```

This example shows the color as background, it is applied via the CSS property "background".

To optimize and compress your CSS code, you can use our [online CSS compressor and optimizer](#) based on csstidy. If you want to create a linear or radial gradient as background or border, check our [CSS Gradient Generator](#).



Hey! You found this booklet interesting? Support Converting Colors with the new Membership Option!

The pro membership hides all ads, plus gives you double the colors in the color bucket, and more awesome pro features!

**[Learn more, Memberships starting at \\$2.50/m!](#)**

**Follow me  
on Twitter!**

@ConvertingColor