

Converting Colors

Decimal(13279909)

Have a look what the booklet for
Decimal(13279909) contains.

Decimal(13279909)	3
<i>Conversions</i>	4
<i>Details</i>	6
<i>Harmonies</i>	11
<i>Previews</i>	23
<i>Color Blindness Simulation</i>	26
<i>CSS Examples</i>	29

Color

Decimal(13279909)

Conversions

Conversions Part 1

Format	Color
Hex	CAA2A5
RGB	202, 162, 165
RGB Percent	79%, 64%, 65%
CMY	0.2078, 0.3647, 0.3529
CMYK	0.00, 0.20, 0.18, 0.21
HSL	356°, 27%, 71%
HSV	356°, 20%, 79%
XYZ	44.0690, 41.1138, 41.2104
YIQ	174.3020, 22.8770, 9.4130

Conversions

Conversions Part 2

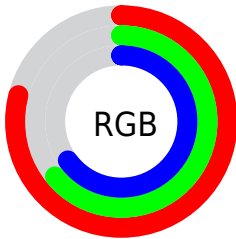
Format	Color
R_{YB}	202, 162, 165
Decimal	13279909
CIE _{Lab}	70.26, 15.20, 4.05
CIE _{LCh}	70, 15.730, 14.907
Yxy	41.1138, 0.3487, 0.3253
Android (android.graphics.Color)	4291469989 (0xFFCAA2A5)
YUV	174.3020, -4.5859, 24.2911
Hunter-Lab	64.1201, 10.4709, 6.7780

Details

The Decimal color **13279909** is a light color, and the websafe version is hex **CC9999**. A complement of this color would be **10668743**, and the grayscale version is **11447982**.

A 20% lighter version of the original color is **16767452**, and **9662065** is the 20% darker color. If you saturate the color by 10%, you get **13274770**, and if you desaturate by 10%, it is **13285048**.

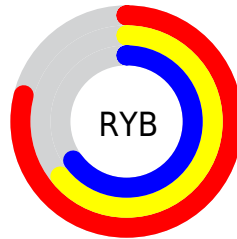
Distribution



Red (79%)

Green (64%)

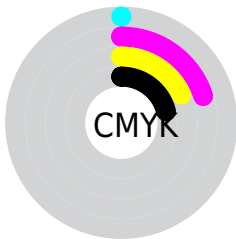
Blue (65%)



Red (79%)

Yellow (64%)

Blue (65%)

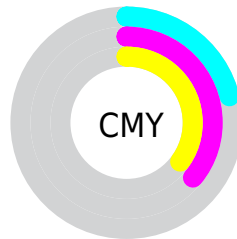


Cyan (0%)

Magenta (20%)

Yellow (18%)

Black (21%)



Cyan (21%)

Magenta (36%)

Yellow (35%)

Brightness & Saturation Gradients

These gradients show how the Decimal color 13279909 changes by changing the brightness by 10 percent. The first figure shows a shift by +10% for each color and the second figure -10%.

Similar to the brightness gradients but the following saturation gradients show a change of the Decimal color 13279909 by changing the saturation by 10% instead.

 13279909

 13279909

16777215

 11438219

 16767452


 9662065

 16774648

 7951961

 6307394

 4663339

 3150615

 1900545

 0

 13279909

 13279909

 13274770

 13285048

 13269632

 13290186

 13264237

 13295581

 13259098

 13300720

 13253960

 13303807

 13248821

 13243682

 13238288

 13238287

Harmonies

Analogous

The Analogous color harmony consists of three colors that are next to each other on the color wheel.



12886964



13279909



13149336

Triad

The Triadic color harmony groups three colors that are evenly spaced from another and form a triangle on the color wheel.



13279909



10465687



9744327

Complementary

The Complementary color scheme is a pair of colors which are on the opposite of each other on the color wheel.



13279909



10668743

Split Complementary

Split-complementary colors differ from the complementary color scheme. The scheme consists of three colors, the original color and two neighbors of the complement color.



8958911



13279909



9483428

Square

The Square scheme is like the rectangle color scheme, but the four colors are evenly spaced on the color wheel.



13279909



11578768



8893619



10857415

Rectangle

The Rectangle color scheme consists of four colors that form a rectangle on the color wheel.



13279909



12756882



8893619



9417157

Sweetspot

The Sweet Spot groups the original color and five complimentary colors.



13279909



16773361



13083338



8419191



0



8421504

Same Dimension

The Same Dimension uses a secret algorithm to generate beautiful new colors.



13279909



16761542



13284258



6708317



10878988



2490371

Inverse Universe

The Inverse Universe completely reimagines the original color for something new.



13279909



16761542



10664394



6708317



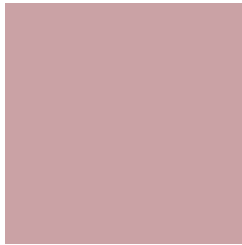
10878988



2490371

Previews

White Background



This preview shows how the Decimal color 13279909 looks on a white background.

Color Contrast Check

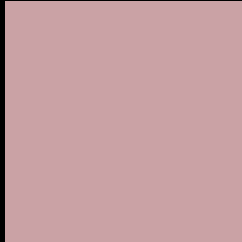
Large Text (above 18pt) WCAG AA × Fail

Any Text WCAG AA × Fail

Large Text (above 18pt) WCAG AAA × Fail

Any Text WCAG AAA × Fail

Black Background



This preview shows how the Decimal color 13279909 looks on a black background.

Color Contrast Check

Large Text (above 18pt) WCAG AA ✓ Pass

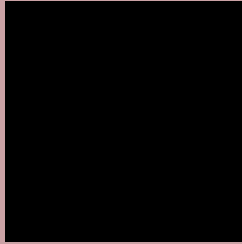
Any Text WCAG AA ✓ Pass

Large Text (above 18pt) WCAG AAA ✓ Pass

Any Text WCAG AAA ✓ Pass

If you want to check with other color combinations, try the [Color Contrast Checker](#).

Decimal 13279909 Background



This preview shows how black text looks on a background with the Decimal color 13279909.



This preview shows how white text looks on a background with the Decimal color 13279909.

Color Blindness Simulation

Color vision deficiency is a very complex topic, and I could not describe the different causes any better than Wikipedia does, so if you want to learn more, you should check out their [article about color blindness](#).


Dichromacy



Original Color
13279909

Protanopia
11512746

Deuteranopia
12560036



Tritanopia
13345197

Trichromacy



Original Color
13279909

Protanomaly
12167336

Deuteranomaly
12821924

Tritanomaly
13345194

Monochromacy



Original Color
13279909

Achromatopsia
11447982

Achromatomaly
12102315

CSS Examples

Text

The CSS property to change the color of the text to Decimal 13279909 is called "color". The color property can be set on classes, ids or directly on the HTML element.

This example shows how text in the color #CAA2A5 looks like.

```
.text, #text, p{  
    color:#CAA2A5  
}
```

If you want to add a text shadow in that color use the text-shadow property, you can generate a text shadow directly with our [CSS Text Shadow Generator](#).

Here you see how black text with a 4 pixel #CAA2A5 colored shadow looks like.

```
.shadow{ text-shadow: 4px 4px 2px #CAA2A5
}
```

Border

The CSS property to change the border of an element to Decimal 13279909 is called "border". The border property can be set on classes, ids or directly on the HTML element.

This example shows the color as border, it can be applied via the CSS property "border" or "border-color".

```
.border, #border, table{ border:4px solid
#CAA2A5 }
```

If only the border color should be changed use the property `border-color`.

```
.border{ border-color:#CAA2A5 }
```

If you want to add a box shadow in that color use:

Here you see how a box with a 4 pixel #CAA2A5 colored shadow looks like.

```
.boxshadow{ -moz-box-shadow:4px 4px 4px  
4px #CAA2A5; -webkit-box-shadow:4px 4px  
4px 4px #CAA2A5; box-shadow:4px 4px 4px  
4px #CAA2A5 }
```

Background

The CSS property to change the background color of an element to Decimal 13279909 is called "background". The background property can be set on classes, ids or directly on the HTML element.

```
.background, #background, body{  
background:#CAA2A5 }
```

If only the background color should be changed can be used:

```
.background{ background-color:#CAA2A5 }
```

This example shows the color as background, it is applied via the CSS property "background".

To optimize and compress your CSS code, you can use our [online CSS compressor and optimizer](#) based on csstidy. If you want to create a linear or radial gradient as background or border, check our [CSS Gradient Generator](#).

Hey! You found this booklet interesting? Support Converting Colors with the new Membership Option!

The pro membership hides all ads, plus gives you double the colors in the color bucket, and more awesome pro features!

[Learn more, Memberships starting at \\$2.50/m!](#)

**Follow me
on Twitter!**

@ConvertingColor