

Converting Colors

Decimal(13280396)

Have a look what the booklet for
Decimal(13280396) contains.

Decimal(13280396)	3
<i>Conversions</i>	4
<i>Details</i>	6
<i>Harmonies</i>	11
<i>Previews</i>	23
<i>Color Blindness Simulation</i>	26
<i>CSS Examples</i>	29

Color

Decimal(13280396)

Conversions

Conversions Part 1

Format	Color
Hex	CAA48C
RGB	202, 164, 140
RGB Percent	79%, 64%, 55%
CMY	0.2078, 0.3569, 0.4510
CMYK	0.00, 0.19, 0.31, 0.21
HSL	23°, 37%, 67%
HSV	23°, 31%, 79%
XYZ	42.3662, 41.0009, 30.4920
YIQ	172.6260, 30.3520, 0.5920

Conversions

Conversions Part 2

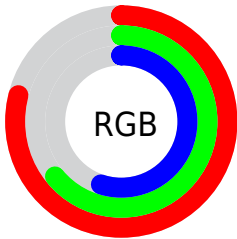
Format	Color
R _Y B	202, 179, 140
Decimal	13280396
CIE Lab	70.18, 10.49, 17.73
CIE LCh	70, 20.602, 59.388
Yxy	41.0009, 0.3721, 0.3601
Android (android.graphics.Color)	4291470476 (0xFFCAA48C)
YUV	172.6260, -16.0846, 25.7610
Hunter-Lab	64.0320, 6.0471, 16.5885

Details

The Decimal color **13280396** is a light color, and the websafe version is hex **CC9999**. A complement of this color would be **9220810**, and the grayscale version is **11382189**.

A 20% lighter version of the original color is **16767938**, and **9662554** is the 20% darker color. If you saturate the color by 10%, you get **13277304**, and if you desaturate by 10%, it is **13283488**.

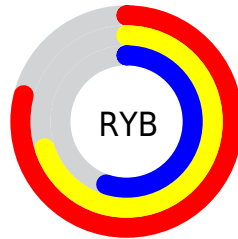
Distribution



Red (79%)

Green (64%)

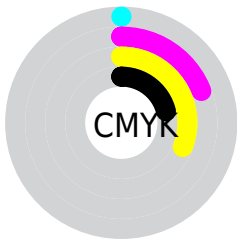
Blue (55%)



Red (79%)

Yellow (70%)

Blue (55%)

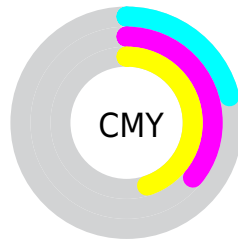


Cyan (0%)

Magenta (19%)

Yellow (31%)

Black (21%)



Cyan (21%)

Magenta (36%)

Yellow (45%)

Brightness & Saturation Gradients

These gradients show how the Decimal color 13280396 changes by changing the brightness by 10 percent. The first figure shows a shift by +10% for each color and the second figure -10%.

Similar to the brightness gradients but the following saturation gradients show a change of the Decimal color 13280396 by changing the saturation by 10% instead.

 13280396

 13280396

16777215

 11438706

 16767938

 9662554

 16775134

 7886914

 16777210

 6242348

 4598295

 3085568

 1507328

 0

 13280396

 13280396

 13277304

 13283488

 13273956

 13286836

 13270863

 13289929

 13267515

 13293277

 13264423

 13296369

 13261331

 13299455

 13258240

 13302783

 13303807

Harmonies

Analogous

The Analogous color harmony consists of three colors that are next to each other on the color wheel.



13803418



13280396



12233350

Triad

The Triadic color harmony groups three colors that are evenly spaced from another and form a triangle on the color wheel.



13280396



8369834



11446220

Complementary

The Complementary color scheme is a pair of colors which are on the opposite of each other on the color wheel.



13280396



9220810

Split Complementary

Split-complementary colors differ from the complementary color scheme. The scheme consists of three colors, the original color and two neighbors of the complement color.



9809361



13280396



7911101

Square

The Square scheme is like the rectangle color scheme, but the four colors are evenly spaced on the color wheel.



13280396



9548952



8434635



12886463

Rectangle

The Rectangle color scheme consists of four colors that form a rectangle on the color wheel.



13280396



11382408



8434635



10922447

Sweetspot

The Sweet Spot groups the original color and five complimentary colors.



13280396



16773608



13274290



8419185



0



8421504

Same Dimension

The Same Dimension uses a secret algorithm to generate beautiful new colors.



13280396



16762273



13288332



6709340



10895360



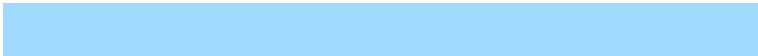
2494208

Inverse Universe

The Inverse Universe completely reimagines the original color for something new.



9220810



10607359



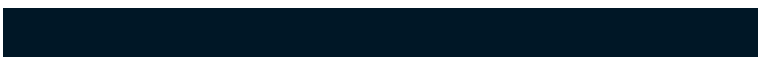
9212874



6054502



26278



5926

Previews

White Background



This preview shows how the Decimal color 13280396 looks on a white background.

Color Contrast Check

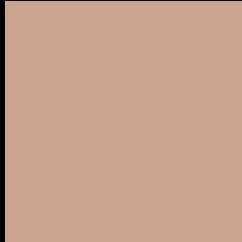
Large Text (above 18pt) WCAG AA × Fail

Any Text WCAG AA × Fail

Large Text (above 18pt) WCAG AAA × Fail

Any Text WCAG AAA × Fail

Black Background



This preview shows how the Decimal color 13280396 looks on a black background.

Color Contrast Check

Large Text (above 18pt) WCAG AA ✓ Pass

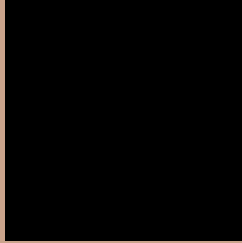
Any Text WCAG AA ✓ Pass

Large Text (above 18pt) WCAG AAA ✓ Pass

Any Text WCAG AAA ✓ Pass

If you want to check with other color combinations, try the [Color Contrast Checker](#).

Decimal 13280396 Background



This preview shows how black text looks on a background with the Decimal color 13280396.



This preview shows how white text looks on a background with the Decimal color 13280396.

Color Blindness Simulation

Color vision deficiency is a very complex topic, and I could not describe the different causes any better than Wikipedia does, so if you want to learn more, you should check out their [article about color blindness](#).

Dichromacy



Original Color
13280396

Protanopia
11905936

Deuteranopia
13084044



Tritanopia
13475756

Trichromacy



Original Color
13280396

Protanomaly
12429455

Deuteranomaly
13149580

Tritanomaly
13410720

Monochromacy



Original Color
13280396

Achromatopsia
11382189

Achromatomaly
12102305

CSS Examples

Text

The CSS property to change the color of the text to Decimal 13280396 is called "color". The color property can be set on classes, ids or directly on the HTML element.

This example shows how text in the color #CAA48C looks like.

```
.text, #text, p{  
    color:#CAA48C  
}
```

If you want to add a text shadow in that color use the text-shadow property, you can generate a text shadow directly with our [CSS Text Shadow Generator](#).

Here you see how black text with a 4 pixel #CAA48C colored shadow looks like.

```
.shadow{ text-shadow: 4px 4px 2px #CAA48C
}
```

Border

The CSS property to change the border of an element to Decimal 13280396 is called "border". The border property can be set on classes, ids or directly on the HTML element.

This example shows the color as border, it can be applied via the CSS property "border" or "border-color".

```
.border, #border, table{ border:4px solid
#CAA48C }
```

If only the border color should be changed use the property `border-color`.

```
.border{ border-color:#CAA48C }
```

If you want to add a box shadow in that color use:

Here you see how a box with a 4 pixel #CAA48C colored shadow looks like.

```
.boxshadow{ -moz-box-shadow:4px 4px 4px  
4px #CAA48C; -webkit-box-shadow:4px 4px  
4px 4px #CAA48C; box-shadow:4px 4px 4px  
4px #CAA48C }
```

Background

The CSS property to change the background color of an element to Decimal 13280396 is called "background". The background property can be set on classes, ids or directly on the HTML element.

```
.background, #background, body{  
background:#CAA48C }
```

If only the background color should be changed can be used:

```
.background{ background-color:#CAA48C }
```

This example shows the color as background, it is applied via the CSS property "background".

To optimize and compress your CSS code, you can use our [online CSS compressor and optimizer](#) based on csstidy. If you want to create a linear or radial gradient as background or border, check our [CSS Gradient Generator](#).

Hey! You found this booklet interesting? Support Converting Colors with the new Membership Option!

The pro membership hides all ads, plus gives you double the colors in the color bucket, and more awesome pro features!

[Learn more, Memberships starting at \\$2.50/m!](#)

**Follow me
on Twitter!**

@ConvertingColor