

Converting Colors

Decimal(13281948)

Have a look what the booklet for
Decimal(13281948) contains.

Decimal(13281948)	3
<i>Conversions</i>	4
<i>Details</i>	6
<i>Harmonies</i>	11
<i>Previews</i>	23
<i>Color Blindness Simulation</i>	26
<i>CSS Examples</i>	29

Color

Decimal(13281948)

Conversions

Conversions Part 1

Format	Color
Hex	CAA9C
RGB	202, 170, 156
RGB Percent	79%, 67%, 61%
CMY	0.2078, 0.3333, 0.3882
CMYK	0.00, 0.16, 0.23, 0.21
HSL	18°, 30%, 70%
HSV	18°, 23%, 79%
XYZ	44.7326, 43.7063, 37.5310
YIQ	177.9720, 23.5660, 2.4300

Conversions

Conversions Part 2

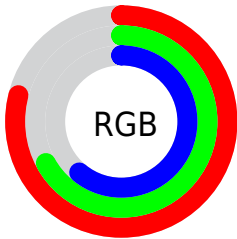
Format	Color
R_{YB}	202, 176, 156
Decimal	13281948
CIE Lab	72.03, 9.48, 11.55
CIE LCh	72, 14.940, 50.628
Yxy	43.7063, 0.3551, 0.3470
Android (android.graphics.Color)	4291472028 (0xFFCAA9C)
YUV	177.9720, -10.8322, 21.0726
Hunter-Lab	66.1107, 5.0849, 12.6187

Details

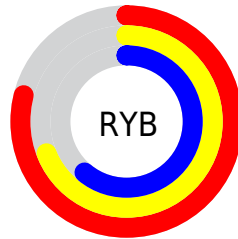
The Decimal color **13281948** is a light color, and the websafe version is hex **CC9999**. A complement of this color would be **10271946**, and the grayscale version is **11711154**.

A 20% lighter version of the original color is **16769490**, and **9664105** is the 20% darker color. If you saturate the color by 10%, you get **13278344**, and if you desaturate by 10%, it is **13285552**.

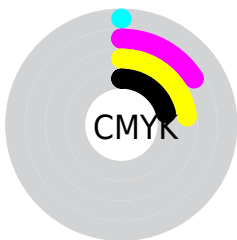
Distribution



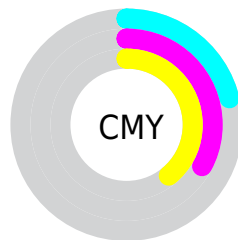
- Red (79%)
- Green (67%)
- Blue (61%)



- Red (79%)
- Yellow (69%)
- Blue (61%)



- Cyan (0%)
- Magenta (16%)
- Yellow (23%)
- Black (21%)



- Cyan (21%)
- Magenta (33%)
- Yellow (39%)

Brightness & Saturation Gradients

These gradients show how the Decimal color 13281948 changes by changing the brightness by 10 percent. The first figure shows a shift by +10% for each color and the second figure -10%.

Similar to the brightness gradients but the following saturation gradients show a change of the Decimal color 13281948 by changing the saturation by 10% instead.

 13281948

 13281948

16777215

 11440258

 16769490

 9664105

 16776943

 7953745

 6309434

 4665124

 3152399

 1769472

 0

 13281948

 13281948

 13278344

 13285552

 13274740

 13289156

 13271135

 13292761

 13267531

 13296365

 13263927

 13299967

 13260323

 13303551

 13256719

 13303807

 13253888

Harmonies

Analogous

The Analogous color harmony consists of three colors that are next to each other on the color wheel.



13543336



13281948



12627606

Triad

The Triadic color harmony groups three colors that are evenly spaced from another and form a triangle on the color wheel.



13281948



9746604



11448266

Complementary

The Complementary color scheme is a pair of colors which are on the opposite of each other on the color wheel.



13281948



10271946

Split Complementary

Split-complementary colors differ from the complementary color scheme. The scheme consists of three colors, the original color and two neighbors of the complement color.



10335179



13281948



9287866

Square

The Square scheme is like the rectangle color scheme, but the four colors are evenly spaced on the color wheel.



13281948



10663583



9484229



12495554

Rectangle

The Rectangle color scheme consists of four colors that form a rectangle on the color wheel.



13281948



11973014



9484229



11055307

Sweetspot

The Sweet Spot groups the original color and five complimentary colors.



13281948



16774125



13278396



8419445



0



8421504

Same Dimension

The Same Dimension uses a secret algorithm to generate beautiful new colors.



13281948



16764858



13287836



6709084



10891776



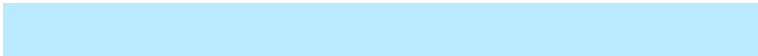
2493440

Inverse Universe

The Inverse Universe completely reimagines the original color for something new.



10271946



12249855



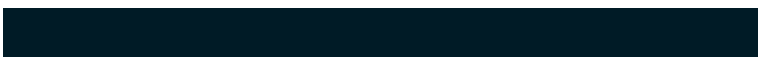
10266058



6054758



29606



6950

Previews

White Background



This preview shows how the Decimal color 13281948 looks on a white background.

Color Contrast Check

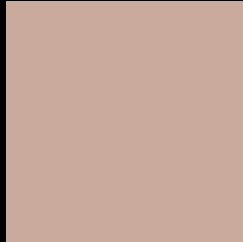
Large Text (above 18pt) WCAG AA × Fail

Any Text WCAG AA × Fail

Large Text (above 18pt) WCAG AAA × Fail

Any Text WCAG AAA × Fail

Black Background



This preview shows how the Decimal color 13281948 looks on a black background.

Color Contrast Check

Large Text (above 18pt) WCAG AA ✓ Pass

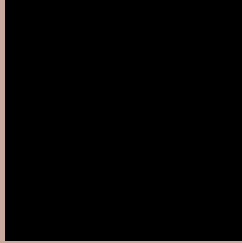
Any Text WCAG AA ✓ Pass

Large Text (above 18pt) WCAG AAA ✓ Pass

Any Text WCAG AAA ✓ Pass

If you want to check with other color combinations, try the [Color Contrast Checker](#).

Decimal 13281948 Background



This preview shows how black text looks on a background with the Decimal color 13281948.



This preview shows how white text looks on a background with the Decimal color 13281948.

Color Blindness Simulation

Color vision deficiency is a very complex topic, and I could not describe the different causes any better than Wikipedia does, so if you want to learn more, you should check out their [article about color blindness](#).

Dichromacy



Original Color
13281948

Protanopia
12103839

Deuteranopia
13216412



Tritanopia
13477811

Trichromacy



Original Color
13281948

Protanomaly
12562078

Deuteranomaly
13216412

Tritanomaly
13412523

Monochromacy



Original Color
13281948

Achromatopsia
11711154

Achromatomaly
12300202

CSS Examples

Text

The CSS property to change the color of the text to Decimal 13281948 is called "color". The color property can be set on classes, ids or directly on the HTML element.

This example shows how text in the color #CAA9C looks like.

```
.text, #text, p{  
    color:#CAA9C  
}
```

If you want to add a text shadow in that color use the text-shadow property, you can generate a text shadow directly with our [CSS Text Shadow Generator](#).

Here you see how black text with a 4 pixel #CAA9C colored shadow looks like.

```
.shadow{ text-shadow: 4px 4px 2px #CAA9C  
}
```

Border

The CSS property to change the border of an element to Decimal 13281948 is called "border". The border property can be set on classes, ids or directly on the HTML element.

This example shows the color as border, it can be applied via the CSS property "border" or "border-color".

```
.border, #border, table{ border:4px solid  
#CAA9C }
```

If only the border color should be changed use the property `border-color`.

```
.border{ border-color:#CAA9C }
```

If you want to add a box shadow in that color use:

Here you see how a box with a 4 pixel #CAA9C colored shadow looks like.

```
.boxshadow{ -moz-box-shadow:4px 4px 4px  
4px #CAA9C; -webkit-box-shadow:4px 4px  
4px 4px #CAA9C; box-shadow:4px 4px 4px  
4px #CAA9C }
```

Background

The CSS property to change the background color of an element to Decimal 13281948 is called "background". The background property can be set on classes, ids or directly on the HTML element.

```
.background, #background, body{  
background:#CAA9C }  
}
```

If only the background color should be changed can be used:

```
.background{ background-color:#CAA9C }
```

This example shows the color as background, it is applied via the CSS property "background".

To optimize and compress your CSS code, you can use our [online CSS compressor and optimizer](#) based on csstidy. If you want to create a linear or radial gradient as background or border, check our [CSS Gradient Generator](#).

Hey! You found this booklet interesting? Support Converting Colors with the new Membership Option!

The pro membership hides all ads, plus gives you double the colors in the color bucket, and more awesome pro features!

[Learn more, Memberships starting at \\$2.50/m!](#)

**Follow me
on Twitter!**

@ConvertingColor