

Converting Colors

Decimal(13283733)

Have a look what the booklet for
Decimal(13283733) contains.

Decimal(13283733)	3
<i>Conversions</i>	4
<i>Details</i>	6
<i>Harmonies</i>	11
<i>Previews</i>	23
<i>Color Blindness Simulation</i>	26
<i>CSS Examples</i>	29

Color

Decimal(13283733)

Conversions

Conversions Part 1

Format	Color
Hex	CAB195
RGB	202, 177, 149
RGB Percent	79%, 69%, 58%
CMY	0.2078, 0.3059, 0.4157
CMYK	0.00, 0.12, 0.26, 0.21
HSL	32°, 33%, 69%
HSV	32°, 26%, 79%
XYZ	45.5041, 46.1708, 34.9473
YIQ	181.2830, 23.8880, -3.4080

Conversions

Conversions Part 2

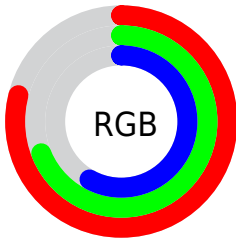
Format	Color
R _Y B	196, 202, 149
Decimal	13283733
CIE Lab	73.66, 4.70, 17.64
CIE LCh	74, 18.259, 75.089
Yxy	46.1708, 0.3594, 0.3646
Android (android.graphics.Color)	4291473813 (0xFFCAB195)
YUV	181.2830, -15.9155, 18.1688
Hunter-Lab	67.9491, 0.6269, 17.0706

Details

The Decimal color **13283733** is a light color, and the websafe version is hex **CCCC99**. A complement of this color would be **9809610**, and the grayscale version is **11908533**.

A 20% lighter version of the original color is **16771531**, and **9665890** is the 20% darker color. If you saturate the color by 10%, you get **13281153**, and if you desaturate by 10%, it is **13286313**.

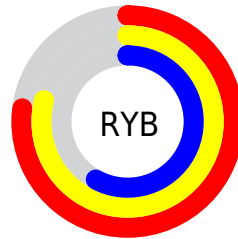
Distribution



Red (79%)

Green (69%)

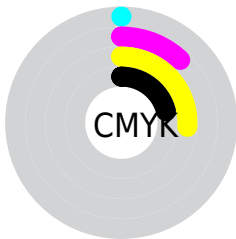
Blue (58%)



Red (77%)

Yellow (79%)

Blue (58%)

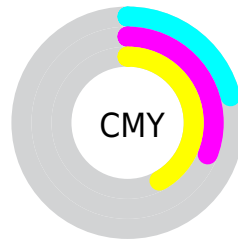


Cyan (0%)

Magenta (12%)

Yellow (26%)

Black (21%)



Cyan (21%)

Magenta (31%)

Yellow (42%)

Brightness & Saturation Gradients

These gradients show how the Decimal color 13283733 changes by changing the brightness by 10 percent. The first figure shows a shift by +10% for each color and the second figure -10%.

Similar to the brightness gradients but the following saturation gradients show a change of the Decimal color 13283733 by changing the saturation by 10% instead.

 13283733

 13283733

16777215

 11441787

 16771531

 9665890

 16777191

 7955530

 6310963

 4666654

 3153926

 1640704

 0

 13283733

 13283733

 13281153

 13286313

 13278829

 13288637

 13276248

 13291218

 13273924

 13293542

 13271344

 13296122

 13269020

 13298431

 13266440

 13300991

 13265664

 13303295

 13303807

Harmonies

Analogous

The Analogous color harmony consists of three colors that are next to each other on the color wheel.



14003358



13283733



12171157

Triad

The Triadic color harmony groups three colors that are evenly spaced from another and form a triangle on the color wheel.



13283733



9027517



12758733

Complementary

The Complementary color scheme is a pair of colors which are on the opposite of each other on the color wheel.



13283733



9809610

Split Complementary

Split-complementary colors differ from the complementary color scheme. The scheme consists of three colors, the original color and two neighbors of the complement color.



11384021



13283733



9092556

Square

The Square scheme is like the rectangle color scheme, but the four colors are evenly spaced on the color wheel.



13283733



9748140



10009045



13806270

Rectangle

The Rectangle color scheme consists of four colors that form a rectangle on the color wheel.



13283733



11319961



10009045



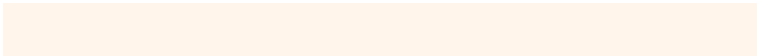
12366032

Sweetspot

The Sweet Spot groups the original color and five complimentary colors.



13283733



16774635



13276591



8419699



0



8421504

Same Dimension

The Same Dimension uses a secret algorithm to generate beautiful new colors.



13283733



16767664



13224597



6709596



10901504



2495488

Inverse Universe

The Inverse Universe completely reimagines the original color for something new.



9809610



11589119



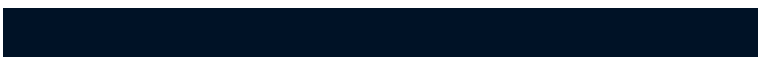
9868746



6054246



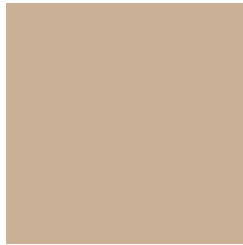
20134



4646

Previews

White Background



This preview shows how the Decimal color 13283733 looks on a white background.

Color Contrast Check

Large Text (above 18pt) WCAG AA × Fail

Any Text WCAG AA × Fail

Large Text (above 18pt) WCAG AAA × Fail

Any Text WCAG AAA × Fail

Black Background



This preview shows how the Decimal color 13283733 looks on a black background.

Color Contrast Check

Large Text (above 18pt) WCAG AA ✓ Pass

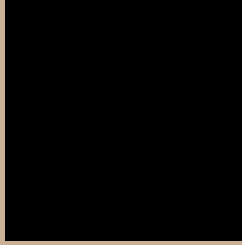
Any Text WCAG AA ✓ Pass

Large Text (above 18pt) WCAG AAA ✓ Pass

Any Text WCAG AAA ✓ Pass

If you want to check with other color combinations, try the [Color Contrast Checker](#).

Decimal 13283733 Background



This preview shows how black text looks on a background with the Decimal color 13283733.



This preview shows how white text looks on a background with the Decimal color 13283733.

Color Blindness Simulation

Color vision deficiency is a very complex topic, and I could not describe the different causes any better than Wikipedia does, so if you want to learn more, you should check out their [article about color blindness](#).


Dichromacy



Original Color
13283733

Protanopia
12563863

Deuteranopia
13807254



Tritanopia
13544633

Trichromacy



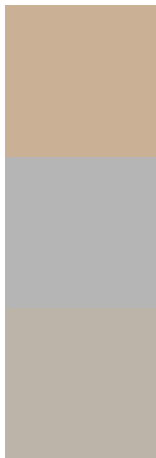
Original Color
13283733

Protanomaly
12825750

Deuteranomaly
13610902

Tritanomaly
13479596

Monochromacy



Original Color
13283733

Achromatopsia
11908533

Achromatomaly
12432553

CSS Examples

Text

The CSS property to change the color of the text to Decimal 13283733 is called "color". The color property can be set on classes, ids or directly on the HTML element.

This example shows how text in the color #CAB195 looks like.

```
.text, #text, p{  
    color:#CAB195  
}
```

If you want to add a text shadow in that color use the text-shadow property, you can generate a text shadow directly with our [CSS Text Shadow Generator](#).

Here you see how black text with a 4 pixel #CAB195 colored shadow looks like.

```
.shadow{ text-shadow: 4px 4px 2px #CAB195
}
```

Border

The CSS property to change the border of an element to Decimal 13283733 is called "border". The border property can be set on classes, ids or directly on the HTML element.

This example shows the color as border, it can be applied via the CSS property "border" or "border-color".

```
.border, #border, table{ border:4px solid
#CAB195 }
```

If only the border color should be changed use the property `border-color`.

```
.border{ border-color:#CAB195 }
```

If you want to add a box shadow in that color use:

Here you see how a box with a 4 pixel #CAB195 colored shadow looks like.

```
.boxshadow{ -moz-box-shadow:4px 4px 4px  
4px #CAB195; -webkit-box-shadow:4px 4px  
4px 4px #CAB195; box-shadow:4px 4px 4px  
4px #CAB195 }
```

Background

The CSS property to change the background color of an element to Decimal 13283733 is called "background". The background property can be set on classes, ids or directly on the HTML element.

```
.background, #background, body{  
background:#CAB195 }
```

If only the background color should be changed can be used:

```
.background{ background-color:#CAB195 }
```

This example shows the color as background, it is applied via the CSS property "background".

To optimize and compress your CSS code, you can use our [online CSS compressor and optimizer](#) based on csstidy. If you want to create a linear or radial gradient as background or border, check our [CSS Gradient Generator](#).

Hey! You found this booklet interesting? Support Converting Colors with the new Membership Option!

The pro membership hides all ads, plus gives you double the colors in the color bucket, and more awesome pro features!

[Learn more, Memberships starting at \\$2.50/m!](#)

**Follow me
on Twitter!**

@ConvertingColor