

Converting Colors

Decimal(13283752)

Have a look what the booklet for
Decimal(13283752) contains.

Decimal(13283752)	3
<i>Conversions</i>	4
<i>Details</i>	6
<i>Harmonies</i>	11
<i>Previews</i>	23
<i>Color Blindness Simulation</i>	26
<i>CSS Examples</i>	29

Color

Decimal(13283752)

Conversions

Conversions Part 1

Format	Color
Hex	CAB1A8
RGB	202, 177, 168
RGB Percent	79%, 69%, 66%
CMY	0.2078, 0.3059, 0.3412
CMYK	0.00, 0.12, 0.17, 0.21
HSL	16°, 24%, 73%
HSV	16°, 17%, 79%
XYZ	47.1471, 46.8280, 43.5996
YIQ	183.4490, 17.7890, 2.5010

Conversions

Conversions Part 2

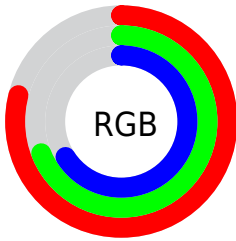
Format	Color
RYB	202, 180, 168
Decimal	13283752
CIELab	74.08, 7.53, 7.90
CIELCh	74, 10.908, 46.376
Yxy	46.8280, 0.3427, 0.3404
Android (android.graphics.Color)	4291473832 (0xFFCAB1A8)
YUV	183.4490, -7.6164, 16.2692
Hunter-Lab	68.4310, 3.2276, 10.1261

Details

The Decimal color **13283752** is a light color, and the websafe version is hex **CC9999**. A complement of this color would be **11059658**, and the grayscale version is **12105912**.

A 20% lighter version of the original color is **16771551**, and **9731188** is the 20% darker color. If you saturate the color by 10%, you get **13279892**, and if you desaturate by 10%, it is **13287612**.

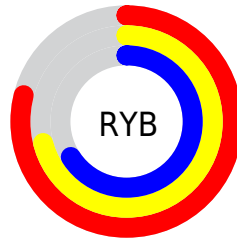
Distribution



Red (79%)

Green (69%)

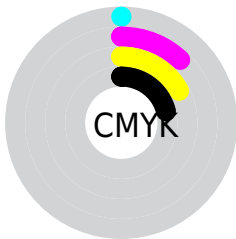
Blue (66%)



Red (79%)

Yellow (71%)

Blue (66%)

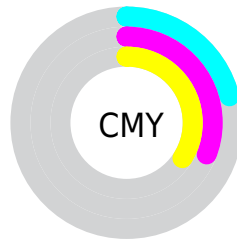


Cyan (0%)

Magenta (12%)

Yellow (17%)

Black (21%)



Cyan (21%)

Magenta (31%)

Yellow (34%)

Brightness & Saturation Gradients

These gradients show how the Decimal color 13283752 changes by changing the brightness by 10 percent. The first figure shows a shift by +10% for each color and the second figure -10%.

Similar to the brightness gradients but the following saturation gradients show a change of the Decimal color 13283752 by changing the saturation by 10% instead.



13283752



13283752

16777215



11441806



16771551



9731188

16777212



8021083



6310980



4732206



3219481



1968128



0



13283752



13283752

 13279892

 13287612

 13276032

 13291472

 13272171

 13295333

 13268567

 13298937

 13264707

 13302783

 13260847

 13303807

 13256987

 13253126

 13251840

Harmonies

Analogous

The Analogous color harmony consists of three colors that are next to each other on the color wheel.



13414321



13283752



12825763

Triad

The Triadic color harmony groups three colors that are evenly spaced from another and form a triangle on the color wheel.



13283752



10730673



11711945

Complementary

The Complementary color scheme is a pair of colors which are on the opposite of each other on the color wheel.



13283752



11059658

Split Complementary

Split-complementary colors differ from the complementary color scheme. The scheme consists of three colors, the original color and two neighbors of the complement color.



10991817



13283752



10337467

Square

The Square scheme is like the rectangle color scheme, but the four colors are evenly spaced on the color wheel.



13283752



11385512



10468292



12563140

Rectangle

The Rectangle color scheme consists of four colors that form a rectangle on the color wheel.



13283752



12367522



10468292



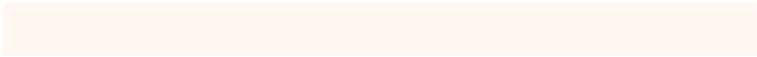
11450058

Sweetspot

The Sweet Spot groups the original color and five complimentary colors.



13283752



16774898



13281474



8419960



0



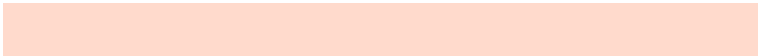
8421504

Same Dimension

The Same Dimension uses a secret algorithm to generate beautiful new colors.



13283752



16767692



13288104



6709084



10890240



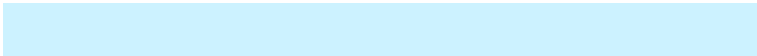
2492928

Inverse Universe

The Inverse Universe completely reimagines the original color for something new.



11059658



13431551



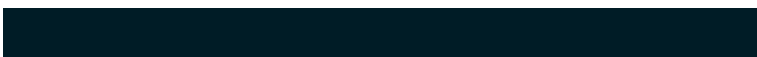
11055562



6054758



31398



7206

Previews

White Background



This preview shows how the Decimal color 13283752 looks on a white background.

Color Contrast Check

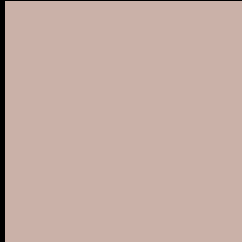
Large Text (above 18pt) WCAG AA × Fail

Any Text WCAG AA × Fail

Large Text (above 18pt) WCAG AAA × Fail

Any Text WCAG AAA × Fail

Black Background



This preview shows how the Decimal color 13283752 looks on a black background.

Color Contrast Check

Large Text (above 18pt) WCAG AA ✓ Pass

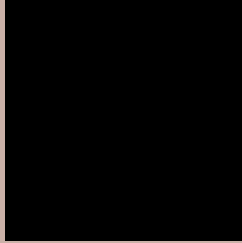
Any Text WCAG AA ✓ Pass

Large Text (above 18pt) WCAG AAA ✓ Pass

Any Text WCAG AAA ✓ Pass

If you want to check with other color combinations, try the [Color Contrast Checker](#).

Decimal 13283752 Background



This preview shows how black text looks on a background with the Decimal color 13283752.



This preview shows how white text looks on a background with the Decimal color 13283752.

Color Blindness Simulation

Color vision deficiency is a very complex topic, and I could not describe the different causes any better than Wikipedia does, so if you want to learn more, you should check out their [article about color blindness](#).

Dichromacy



Original Color
13283752

Protanopia
12367530

Deuteranopia
13480104



Tritanopia
13479612

Trichromacy



Original Color
13283752

Protanomaly
12694697

Deuteranomaly
13414568

Tritanomaly
13414325

Monochromacy



Original Color
13283752

Achromatopsia
12040119

Achromatomaly
12498354

CSS Examples

Text

The CSS property to change the color of the text to Decimal 13283752 is called "color". The color property can be set on classes, ids or directly on the HTML element.

This example shows how text in the color #CAB1A8 looks like.

```
.text, #text, p{  
    color:#CAB1A8  
}
```

If you want to add a text shadow in that color use the text-shadow property, you can generate a text shadow directly with our [CSS Text Shadow Generator](#).

Here you see how black text with a 4 pixel #CAB1A8 colored shadow looks like.

```
.shadow{ text-shadow: 4px 4px 2px #CAB1A8
}
```

Border

The CSS property to change the border of an element to Decimal 13283752 is called "border". The border property can be set on classes, ids or directly on the HTML element.

This example shows the color as border, it can be applied via the CSS property "border" or "border-color".

```
.border, #border, table{ border:4px solid
#CAB1A8 }
```

If only the border color should be changed use the property `border-color`.

```
.border{ border-color:#CAB1A8 }
```

If you want to add a box shadow in that color use:

Here you see how a box with a 4 pixel #CAB1A8 colored shadow looks like.

```
.boxshadow{ -moz-box-shadow:4px 4px 4px  
4px #CAB1A8; -webkit-box-shadow:4px 4px  
4px 4px #CAB1A8; box-shadow:4px 4px 4px  
4px #CAB1A8 }
```

Background

The CSS property to change the background color of an element to Decimal 13283752 is called "background". The background property can be set on classes, ids or directly on the HTML element.

```
.background, #background, body{  
background:#CAB1A8 }
```

If only the background color should be changed can be used:

```
.background{ background-color:#CAB1A8 }
```

This example shows the color as background, it is applied via the CSS property "background".

To optimize and compress your CSS code, you can use our [online CSS compressor and optimizer](#) based on csstidy. If you want to create a linear or radial gradient as background or border, check our [CSS Gradient Generator](#).

Hey! You found this booklet interesting? Support Converting Colors with the new Membership Option!

The pro membership hides all ads, plus gives you double the colors in the color bucket, and more awesome pro features!

[Learn more, Memberships starting at \\$2.50/m!](#)

**Follow me
on Twitter!**

@ConvertingColor