

Converting Colors

Decimal(13285567)

Have a look what the booklet for
Decimal(13285567) contains.

Decimal(13285567)	3
<i>Conversions</i>	4
<i>Details</i>	6
<i>Harmonies</i>	11
<i>Previews</i>	23
<i>Color Blindness Simulation</i>	26
<i>CSS Examples</i>	29

Color

Decimal(13285567)

Conversions

Conversions Part 1

Format	Color
Hex	CAB8BF
RGB	202, 184, 191
RGB Percent	79%, 72%, 75%
CMY	0.2078, 0.2784, 0.2510
CMYK	0.00, 0.09, 0.05, 0.21
HSL	337°, 15%, 76%
HSV	337°, 9%, 79%
XYZ	50.9016, 50.5991, 56.3740
YIQ	190.1800, 8.4810, 5.9930

Conversions

Conversions Part 2

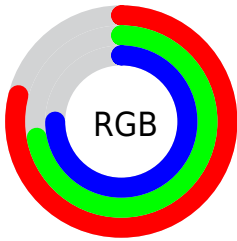
Format	Color
R_{YB}	202, 184, 191
Decimal	13285567
CIE Lab	76.44, 7.61, -1.22
CIE LCh	76, 7.708, 350.855
Yxy	50.5991, 0.3224, 0.3205
Android (android.graphics.Color)	4291475647 (0xFFCAB8BF)
YUV	190.1800, 0.4043, 10.3661
Hunter-Lab	71.1331, 3.2486, 2.8049

Details

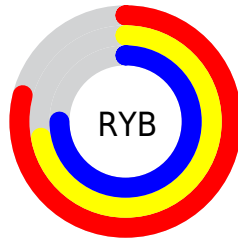
The Decimal color **13285567** is a light color, and the websafe version is hex **CCCCCC**. A complement of this color would be **12110531**, and the grayscale version is **12500670**.

A 20% lighter version of the original color is **16773367**, and **9733002** is the 20% darker color. If you saturate the color by 10%, you get **13280435**, and if you desaturate by 10%, it is **13290699**.

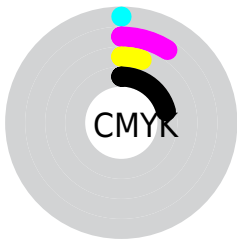
Distribution



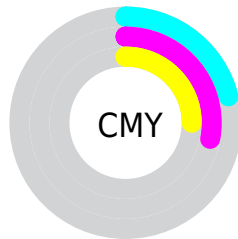
- Red (79%)
- Green (72%)
- Blue (75%)



- Red (79%)
- Yellow (72%)
- Blue (75%)



- Cyan (0%)
- Magenta (9%)
- Yellow (5%)
- Black (21%)



- Cyan (21%)
- Magenta (28%)
- Yellow (25%)

Brightness & Saturation Gradients

These gradients show how the Decimal color 13285567 changes by changing the brightness by 10 percent. The first figure shows a shift by +10% for each color and the second figure -10%.

Similar to the brightness gradients but the following saturation gradients show a change of the Decimal color 13285567 by changing the saturation by 10% instead.

■ 13285567

■ 13285567

16777215

■ 11509156

■ 16773367

■ 9733002

■ 8022640

■ 6378072

■ 4799297

■ 3351851

■ 1970198

■ 0

■ 13285567

■ 13285567

 13280435

 13290699

 13275302

 13295832

 13269914

 13301220

 13264782

 13303792

 13259649

 13303805

 13254517

 13303807

 13249385

 13243996

 13238864

Harmonies

Analogous

The Analogous color harmony consists of three colors that are next to each other on the color wheel.



12892614



13285567



13416632

Triad

The Triadic color harmony groups three colors that are evenly spaced from another and form a triangle on the color wheel.



13285567



12435119



11387079

Complementary

The Complementary color scheme is a pair of colors which are on the opposite of each other on the color wheel.



13285567



12110531

Split Complementary

Split-complementary colors differ from the complementary color scheme. The scheme consists of three colors, the original color and two neighbors of the complement color.



11256257



13285567



11911347

Square

The Square scheme is like the rectangle color scheme, but the four colors are evenly spaced on the color wheel.



13285567



12958639



11452858



11779786

Rectangle

The Rectangle color scheme consists of four colors that form a rectangle on the color wheel.



13285567



13416883



11452858



11321542

Sweetspot

The Sweet Spot groups the original color and five complimentary colors.



13285567



16775162



12826826



8419964



0



8421504

Same Dimension

The Same Dimension uses a secret algorithm to generate beautiful new colors.



13285567



16770030



13286072



6708320



10879040



2490383

Inverse Universe

The Inverse Universe completely reimagines the original color for something new.



13285567



16770030



12110026



6708320



10879040



2490383

Previews

White Background



This preview shows how the Decimal color 13285567 looks on a white background.

Color Contrast Check

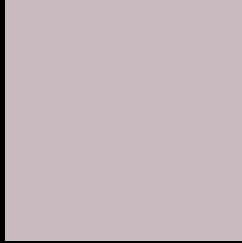
Large Text (above 18pt) WCAG AA × Fail

Any Text WCAG AA × Fail

Large Text (above 18pt) WCAG AAA × Fail

Any Text WCAG AAA × Fail

Black Background



This preview shows how the Decimal color 13285567 looks on a black background.

Color Contrast Check

Large Text (above 18pt) WCAG AA ✓ Pass

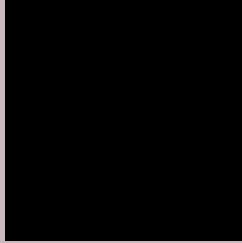
Any Text WCAG AA ✓ Pass

Large Text (above 18pt) WCAG AAA ✓ Pass

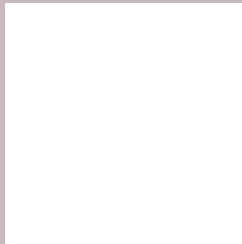
Any Text WCAG AAA ✓ Pass

If you want to check with other color combinations, try the [Color Contrast Checker](#).

Decimal 13285567 Background



This preview shows how black text looks on a background with the Decimal color 13285567.



This preview shows how white text looks on a background with the Decimal color 13285567.

Color Blindness Simulation

Color vision deficiency is a very complex topic, and I could not describe the different causes any better than Wikipedia does, so if you want to learn more, you should check out their [article about color blindness](#).


Dichromacy



Original Color
13285567

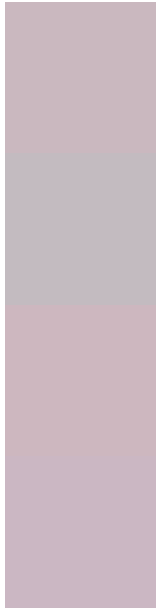
Protanopia
12565697

Deuteranopia
13547455



Tritanopia
13350853

Trichromacy



Original Color
13285567

Protanomaly
12827584

Deuteranomaly
13481919

Tritanomaly
13350851

Monochromacy



Original Color
13285567

Achromatopsia
12500670

Achromatomaly
12762302

CSS Examples

Text

The CSS property to change the color of the text to Decimal 13285567 is called "color". The color property can be set on classes, ids or directly on the HTML element.

This example shows how text in the color #CAB8BF looks like.

```
.text, #text, p{  
  color:#CAB8BF  
}
```

If you want to add a text shadow in that color use the text-shadow property, you can generate a text shadow directly with our [CSS Text Shadow Generator](#).

Here you see how black text with a 4 pixel #CAB8BF colored shadow looks like.

```
.shadow{ text-shadow: 4px 4px 2px #CAB8BF
}
```

Border

The CSS property to change the border of an element to Decimal 13285567 is called "border". The border property can be set on classes, ids or directly on the HTML element.

This example shows the color as border, it can be applied via the CSS property "border" or "border-color".

```
.border, #border, table{ border:4px solid
#CAB8BF }
```

If only the border color should be changed use the property `border-color`.

```
.border{ border-color:#CAB8BF }
```

If you want to add a box shadow in that color use:

Here you see how a box with a 4 pixel #CAB8BF colored shadow looks like.

```
.boxshadow{ -moz-box-shadow:4px 4px 4px  
4px #CAB8BF; -webkit-box-shadow:4px 4px  
4px 4px #CAB8BF; box-shadow:4px 4px 4px  
4px #CAB8BF }
```

Background

The CSS property to change the background color of an element to Decimal 13285567 is called "background". The background property can be set on classes, ids or directly on the HTML element.

```
.background, #background, body{  
background:#CAB8BF }
```

If only the background color should be changed can be used:

```
.background{ background-color:#CAB8BF }
```

This example shows the color as background, it is applied via the CSS property "background".

To optimize and compress your CSS code, you can use our [online CSS compressor and optimizer](#) based on csstidy. If you want to create a linear or radial gradient as background or border, check our [CSS Gradient Generator](#).

Hey! You found this booklet interesting? Support Converting Colors with the new Membership Option!

The pro membership hides all ads, plus gives you double the colors in the color bucket, and more awesome pro features!

[Learn more, Memberships starting at \\$2.50/m!](#)

**Follow me
on Twitter!**

@ConvertingColor