

# Converting Colors

Decimal(13286054)

Have a look what the booklet for  
Decimal(13286054) contains.

<b>Decimal(13286054)</b> .....	3
<i><b>Conversions</b></i> .....	4
<i><b>Details</b></i> .....	6
<i><b>Harmonies</b></i> .....	11
<i><b>Previews</b></i> .....	23
<i><b>Color Blindness Simulation</b></i> .....	26
<i><b>CSS Examples</b></i> .....	29

# **Color**

**Decimal(13286054)**

# Conversions

## Conversions Part 1

Format	Color
Hex	CABAA6
RGB	202, 186, 166
RGB Percent	79%, 73%, 65%
CMY	0.2078, 0.2706, 0.3490
CMYK	0.00, 0.08, 0.18, 0.21
HSL	33°, 25%, 72%
HSV	33°, 18%, 79%
XYZ	48.7990, 50.4275, 43.2379
YIQ	188.5040, 15.9560, -2.8280

# Conversions

## Conversions Part 2

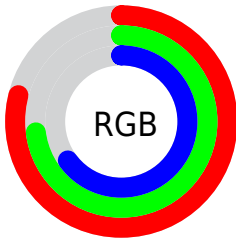
Format	Color
<a href="#">RYB</a>	<a href="#">195, 202, 166</a>
Decimal	<a href="#">13286054</a>
CIELab	<a href="#">76.33, 2.39, 12.19</a>
CIELCh	<a href="#">76, 12.419, 78.899</a>
Yxy	<a href="#">50.4275, 0.3425, 0.3540</a>
Android (android.graphics.Color)	<a href="#">4291476134</a> ( <a href="#">0xFFCABAA6</a> )
YUV	<a href="#">188.5040, -11.0945, 11.8360</a>
Hunter-Lab	<a href="#">71.0124, -1.6082, 13.6082</a>

# Details

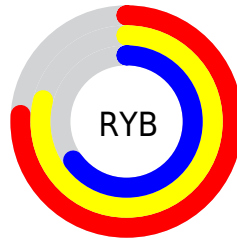
The Decimal color **13286054** is a light color, and the websafe version is hex **CCCCCC**. A complement of this color would be **10925770**, and the grayscale version is **12434877**.

A 20% lighter version of the original color is **16773853**, and **9733490** is the 20% darker color. If you saturate the color by 10%, you get **13283730**, and if you desaturate by 10%, it is **13288378**.

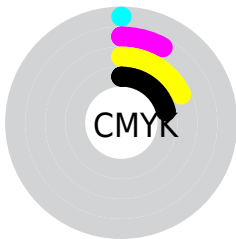
# Distribution



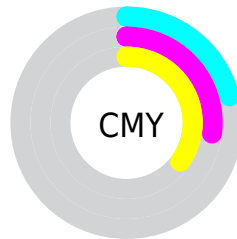
- Red (79%)
- Green (73%)
- Blue (65%)



- Red (76%)
- Yellow (79%)
- Blue (65%)



- Cyan (0%)
- Magenta (8%)
- Yellow (18%)
- Black (21%)



- Cyan (21%)
- Magenta (27%)
- Yellow (35%)

# Brightness & Saturation Gradients

These gradients show how the Decimal color 13286054 changes by changing the brightness by 10 percent. The first figure shows a shift by +10% for each color and the second figure -10%.

Similar to the brightness gradients but the following saturation gradients show a change of the Decimal color 13286054 by changing the saturation by 10% instead.



 13286054

 13286054

16777215

 11444108

 16773853

 9733490

 16777210

 8023130

 6378562

 4733996

 3221271

 1970688

 0

 13286054

 13286054

 13283730

 13288378

 13281406

 13290702

 13279081

 13293027

 13276757

 13295351

 13274433

 13297663

 13272109

 13299967

 13269785

 13302271

 13267460

 13303807

 13266944

# Harmonies

## Analogous

The Analogous color harmony consists of three colors that are next to each other on the color wheel.



13809579



13286054



12500647

# Triad

The Triadic color harmony groups three colors that are evenly spaced from another and form a triangle on the color wheel.



13286054



10535875



13088715

# Complementary

The Complementary color scheme is a pair of colors which are on the opposite of each other on the color wheel.



13286054



10925770

# Split Complementary

Split-complementary colors differ from the complementary color scheme. The scheme consists of three colors, the original color and two neighbors of the complement color.



12172242



13286054



10666701

# Square

The Square scheme is like the rectangle color scheme, but the four colors are evenly spaced on the color wheel.



13286054



10863543



11255762



13743553

# Rectangle

The Rectangle color scheme consists of four colors that form a rectangle on the color wheel.



13286054



11911338



11255762



12826830



# Sweetspot

The Sweet Spot groups the original color and five complimentary colors.



13286054



16775666



13280950



8420472



0



8421504

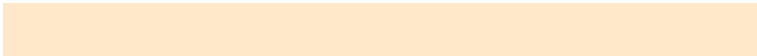


# Same Dimension

The Same Dimension uses a secret algorithm to generate beautiful new colors.



13286054



16771017



13159078



6709596



10902528



2495744

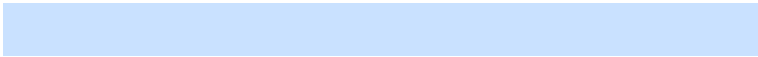


# Inverse Universe

The Inverse Universe completely reimagines the original color for something new.



10925770



13230591



11052746



6053990



19110

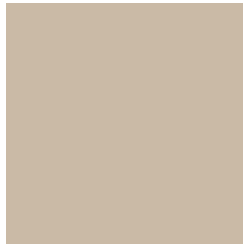


4390



# Previews

## White Background



This preview shows how the Decimal color 13286054 looks on a white background.

## Color Contrast Check

Large Text (above 18pt) WCAG AA × Fail

Any Text WCAG AA × Fail

Large Text (above 18pt) WCAG AAA × Fail

Any Text WCAG AAA × Fail

# Black Background



This preview shows how the Decimal color 13286054 looks on a black background.

## Color Contrast Check

Large Text (above 18pt) WCAG AA ✓ Pass

Any Text WCAG AA ✓ Pass

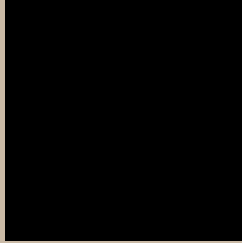
Large Text (above 18pt) WCAG AAA ✓ Pass

Any Text WCAG AAA ✓ Pass

If you want to check with other color combinations, try the [Color Contrast Checker](#).



## Decimal 13286054 Background



This preview shows how black text looks on a background with the Decimal color 13286054.



This preview shows how white text looks on a background with the Decimal color 13286054.

# Color Blindness Simulation

Color vision deficiency is a very complex topic, and I could not describe the different causes any better than Wikipedia does, so if you want to learn more, you should check out their [article about color blindness](#).

## Dichromacy



**Original Color**  
13286054

**Protanopia**  
12958887

**Deuteranopia**  
14071207



**Tritanopia**  
13547204

# Trichromacy



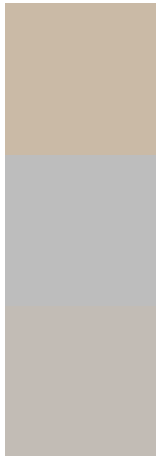
**Original Color**  
13286054

**Protanomaly**  
13089703

**Deuteranomaly**  
13809575

**Tritanomaly**  
13481913

# Monochromacy



**Original Color**  
13286054

**Achromatopsia**  
12434877

**Achromatomaly**  
12762293

# CSS Examples

## Text

The CSS property to change the color of the text to Decimal 13286054 is called "color". The color property can be set on classes, ids or directly on the HTML element.

This example shows how text in the color #CABAA6 looks like.

```
.text, #text, p{  
    color:#CABAA6  
}
```

If you want to add a text shadow in that color use the text-shadow property, you can generate a text shadow directly with our [CSS Text Shadow Generator](#).

Here you see how black text with a 4 pixel #CABAA6 colored shadow looks like.

```
.shadow{ text-shadow: 4px 4px 2px #CABAA6
}
```

## Border

The CSS property to change the border of an element to Decimal 13286054 is called "border". The border property can be set on classes, ids or directly on the HTML element.

This example shows the color as border, it can be applied via the CSS property "border" or "border-color".

```
.border, #border, table{ border:4px solid
#CABAA6 }
```

If only the border color should be changed use the property `border-color`.

```
.border{ border-color:#CABAA6 }
```

If you want to add a box shadow in that color use:

Here you see how a box with a 4 pixel #CABAA6 colored shadow looks like.

```
.boxshadow{ -moz-box-shadow:4px 4px 4px  
4px #CABAA6; -webkit-box-shadow:4px 4px  
4px 4px #CABAA6; box-shadow:4px 4px 4px  
4px #CABAA6 }
```

# Background

The CSS property to change the background color of an element to Decimal 13286054 is called "background". The background property can be set on classes, ids or directly on the HTML element.

```
.background, #background, body{  
background:#CABAA6 }
```

If only the background color should be changed can be used:

```
.background{ background-color:#CABAA6 }
```

This example shows the color as background, it is applied via the CSS property "background".

To optimize and compress your CSS code, you can use our [online CSS compressor and optimizer](#) based on csstidy. If you want to create a linear or radial gradient as background or border, check our [CSS Gradient Generator](#).



Hey! You found this booklet interesting? Support Converting Colors with the new Membership Option!

The pro membership hides all ads, plus gives you double the colors in the color bucket, and more awesome pro features!

**[Learn more, Memberships starting at \\$2.50/m!](#)**

**Follow me  
on Twitter!**

@ConvertingColor