

Converting Colors

Decimal(13340033)

Have a look what the booklet for
Decimal(13340033) contains.

Decimal(13340033)	3
<i>Conversions</i>	4
<i>Details</i>	6
<i>Harmonies</i>	11
<i>Previews</i>	23
<i>Color Blindness Simulation</i>	26
<i>CSS Examples</i>	29

Color

Decimal(13340033)

Conversions

Conversions Part 1

Format	Color
Hex	CB8D81
RGB	203, 141, 129
RGB Percent	80%, 55%, 51%
CMY	0.2039, 0.4471, 0.4941
CMYK	0.00, 0.31, 0.36, 0.20
HSL	10°, 42%, 65%
HSV	10°, 36%, 80%
XYZ	38.1159, 33.3312, 25.1935
YIQ	158.1700, 40.8040, 9.4120

Conversions

Conversions Part 2

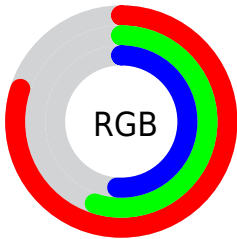
Format	Color
R _{YB}	203, 143, 129
Decimal	13340033
CIE Lab	64.43, 22.04, 15.89
CIE LCh	64, 27.171, 35.779
Yxy	33.3312, 0.3944, 0.3449
Android (android.graphics.Color)	4291530113 (0xFFCB8D81)
YUV	158.1700, -14.3808, 39.3159
Hunter-Lab	57.7332, 16.8140, 14.5404

Details

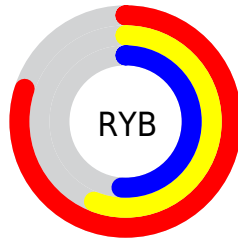
The Decimal color **13340033** is a light color, and the websafe version is hex **CC9999**. A complement of this color would be **8503243**, and the grayscale version is **10395294**.

A 20% lighter version of the original color is **16761782**, and **9656912** is the 20% darker color. If you saturate the color by 10%, you get **13335661**, and if you desaturate by 10%, it is **13344405**.

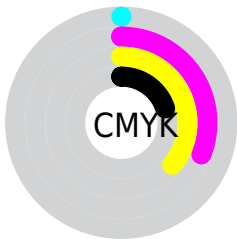
Distribution



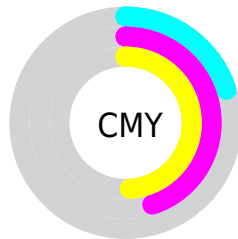
- Red (80%)
- Green (55%)
- Blue (51%)



- Red (80%)
- Yellow (56%)
- Blue (51%)



- Cyan (0%)
- Magenta (31%)
- Yellow (36%)
- Black (20%)



- Cyan (20%)
- Magenta (45%)
- Yellow (49%)

Brightness & Saturation Gradients

These gradients show how the Decimal color 13340033 changes by changing the brightness by 10 percent. The first figure shows a shift by +10% for each color and the second figure -10%.

Similar to the brightness gradients but the following saturation gradients show a change of the Decimal color 13340033 by changing the saturation by 10% instead.

 13340033

 13340033

16777215

 11498344

 16761782


 9656912

 16768977

 7881273

 16776430

 6171427

 4461838

 2883584

 0

 13340033

 13340033

 13335661

 13344405

 13331288

 13348778

 13326916

 13353150

 13322544

 13357522

 13318171

 13361895

 13313799

 13366267

 13312256

 13369343

Harmonies

Analogous

The Analogous color harmony consists of three colors that are next to each other on the color wheel.



13404824



13340033



12489841

Triad

The Triadic color harmony groups three colors that are evenly spaced from another and form a triangle on the color wheel.



13340033



7514248



8691148

Complementary

The Complementary color scheme is a pair of colors which are on the opposite of each other on the color wheel.



13340033



8503243

Split Complementary

Split-complementary colors differ from the complementary color scheme. The scheme consists of three colors, the original color and two neighbors of the complement color.



6464712



13340033



5876384

Square

The Square scheme is like the rectangle color scheme, but the four colors are evenly spaced on the color wheel.



13340033



9347956



5286072



10917060

Rectangle

The Rectangle color scheme consists of four colors that form a rectangle on the color wheel.



13340033



11639148



5286072



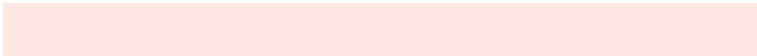
7905484

Sweetspot

The Sweet Spot groups the original color and five complimentary colors.



13340033



16771043



13337024



8417903



0



8421504

Same Dimension

The Same Dimension uses a secret algorithm to generate beautiful new colors.



13340033



16753039



13349249



6708572



10885888



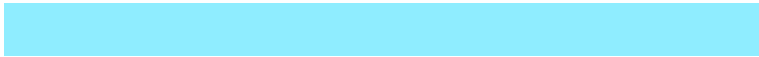
2491904

Inverse Universe

The Inverse Universe completely reimagines the original color for something new.



8503243



9432575



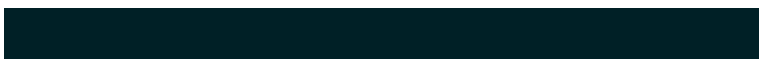
8494027



6055014



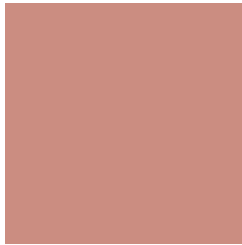
35750



8230

Previews

White Background



This preview shows how the Decimal color 13340033 looks on a white background.

Color Contrast Check

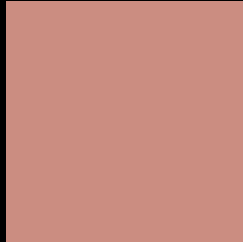
Large Text (above 18pt) WCAG AA × Fail

Any Text WCAG AA × Fail

Large Text (above 18pt) WCAG AAA × Fail

Any Text WCAG AAA × Fail

Black Background



This preview shows how the Decimal color 13340033 looks on a black background.

Color Contrast Check

Large Text (above 18pt) WCAG AA ✓ Pass

Any Text WCAG AA ✓ Pass

Large Text (above 18pt) WCAG AAA ✓ Pass

Any Text WCAG AAA ✓ Pass

If you want to check with other color combinations, try the [Color Contrast Checker](#).

Decimal 13340033 Background



This preview shows how black text looks on a background with the Decimal color 13340033.



This preview shows how white text looks on a background with the Decimal color 13340033.

Color Blindness Simulation

Color vision deficiency is a very complex topic, and I could not describe the different causes any better than Wikipedia does, so if you want to learn more, you should check out their [article about color blindness](#).

Dichromacy





Tritanopia
13470357

Trichromacy



Original Color
13340033

Protanomaly
11704197

Deuteranomaly
12489600

Tritanomaly
13405070

Monochromacy



Original Color
13340033

Achromatopsia
10395294

Achromatomaly
11442323

CSS Examples

Text

The CSS property to change the color of the text to Decimal 13340033 is called "color". The color property can be set on classes, ids or directly on the HTML element.

This example shows how text in the color #CB8D81 looks like.

```
.text, #text, p{  
    color:#CB8D81  
}
```

If you want to add a text shadow in that color use the text-shadow property, you can generate a text shadow directly with our [CSS Text Shadow Generator](#).

Here you see how black text with a 4 pixel #CB8D81 colored shadow looks like.

```
.shadow{ text-shadow: 4px 4px 2px #CB8D81
}
```

Border

The CSS property to change the border of an element to Decimal 13340033 is called "border". The border property can be set on classes, ids or directly on the HTML element.

This example shows the color as border, it can be applied via the CSS property "border" or "border-color".

```
.border, #border, table{ border:4px solid
#CB8D81 }
```

If only the border color should be changed use the property `border-color`.

```
.border{ border-color:#CB8D81 }
```

If you want to add a box shadow in that color use:

Here you see how a box with a 4 pixel #CB8D81 colored shadow looks like.

```
.boxshadow{ -moz-box-shadow:4px 4px 4px  
4px #CB8D81; -webkit-box-shadow:4px 4px  
4px 4px #CB8D81; box-shadow:4px 4px 4px  
4px #CB8D81 }
```

Background

The CSS property to change the background color of an element to Decimal 13340033 is called "background". The background property can be set on classes, ids or directly on the HTML element.

```
.background, #background, body{  
background:#CB8D81 }
```

If only the background color should be changed can be used:

```
.background{ background-color:#CB8D81 }
```

This example shows the color as background, it is applied via the CSS property "background".

To optimize and compress your CSS code, you can use our [online CSS compressor and optimizer](#) based on csstidy. If you want to create a linear or radial gradient as background or border, check our [CSS Gradient Generator](#).

Hey! You found this booklet interesting? Support Converting Colors with the new Membership Option!

The pro membership hides all ads, plus gives you double the colors in the color bucket, and more awesome pro features!

[Learn more, Memberships starting at \\$2.50/m!](#)

**Follow me
on Twitter!**

@ConvertingColor