

# Converting Colors

Decimal(13340779)

Have a look what the booklet for  
Decimal(13340779) contains.

<b>Decimal(13340779)</b> .....	3
<i><b>Conversions</b></i> .....	4
<i><b>Details</b></i> .....	6
<i><b>Harmonies</b></i> .....	11
<i><b>Previews</b></i> .....	23
<i><b>Color Blindness Simulation</b></i> .....	26
<i><b>CSS Examples</b></i> .....	29

# **Color**

**Decimal(13340779)**

# Conversions

## Conversions Part 1

Format	Color
Hex	CB906B
RGB	203, 144, 107
RGB Percent	80%, 56%, 42%
CMY	0.2039, 0.4353, 0.5804
CMYK	0.00, 0.29, 0.47, 0.20
HSL	23°, 48%, 61%
HSV	23°, 47%, 80%
XYZ	37.2557, 33.7046, 18.4520
YIQ	157.4230, 47.0410, 1.0010

# Conversions

## Conversions Part 2

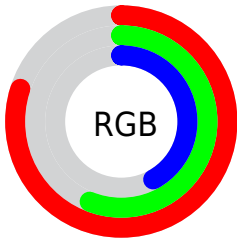
Format	Color
R <sub>Y</sub> B	203, 167, 107
Decimal	13340779
CIE Lab	64.73, 17.96, 28.51
CIE LCh	65, 33.693, 57.791
Yxy	33.7046, 0.4167, 0.3770
Android (android.graphics.Color)	4291530859 (0xFFCB906B)
YUV	157.4230, -24.8585, 39.9710
Hunter-Lab	58.0556, 12.9504, 21.7947

# Details

The Decimal color **13340779** is a light color, and the websafe version is hex **CC9966**. A complement of this color would be **7055051**, and the grayscale version is **10395294**.

A 20% lighter version of the original color is **16762527**, and **9592123** is the 20% darker color. If you saturate the color by 10%, you get **13337687**, and if you desaturate by 10%, it is **13343871**.

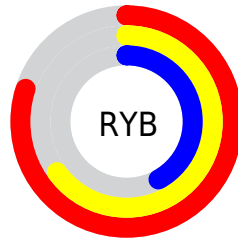
# Distribution



Red (80%)

Green (56%)

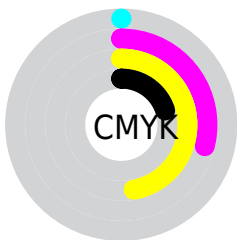
Blue (42%)



Red (80%)

Yellow (65%)

Blue (42%)

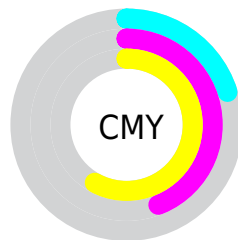


Cyan (0%)

Magenta (29%)

Yellow (47%)

Black (20%)



Cyan (20%)

Magenta (44%)

Yellow (58%)

# Brightness & Saturation Gradients

These gradients show how the Decimal color 13340779 changes by changing the brightness by 10 percent. The first figure shows a shift by +10% for each color and the second figure -10%.

Similar to the brightness gradients but the following saturation gradients show a change of the Decimal color 13340779 by changing the saturation by 10% instead.



 13340779

 13340779

16777215

 11433554

 16762527

 9592123

 16769722

 7816740

 16777174

 6041359

 16777202

 4331776

 2687488

 0

 13340779

 13340779

 13337687

 13343871

 13334338

 13347220

 13331246

 13350312

 13327898

 13353660

 13324806

 13356753

 13323776

 13360101

 13363193

 13366527

 13369343

# Harmonies

## Analogous

The Analogous color harmony consists of three colors that are next to each other on the color wheel.



14125186



13340779



11770465

# Triad

The Triadic color harmony groups three colors that are evenly spaced from another and form a triangle on the color wheel.



13340779



4894106



10393298

# Complementary

The Complementary color scheme is a pair of colors which are on the opposite of each other on the color wheel.



13340779



7055051

# Split Complementary

Split-complementary colors differ from the complementary color scheme. The scheme consists of three colors, the original color and two neighbors of the complement color.



7315929



13340779



2796984

# Square

The Square scheme is like the rectangle color scheme, but the four colors are evenly spaced on the color wheel.



13340779



7449212



4106447



12684478

# Rectangle

The Rectangle color scheme consists of four colors that form a rectangle on the color wheel.



13340779



10461539



4106447



9411286

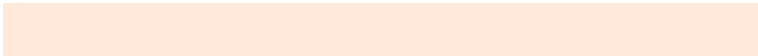


# Sweetspot

The Sweet Spot groups the original color and five complimentary colors.



13340779



16771547



13331366



8417898



0



8421504



# Same Dimension

The Same Dimension uses a secret algorithm to generate beautiful new colors.



13340779



16754286



13353067



6709340



10895360



2494208

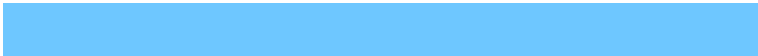


# Inverse Universe

The Inverse Universe completely reimagines the original color for something new.



7055051



7260159



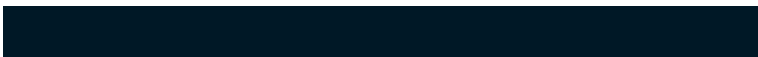
7042763



6054502



26278



6182



# Previews

## White Background



This preview shows how the Decimal color 13340779 looks on a white background.

## Color Contrast Check

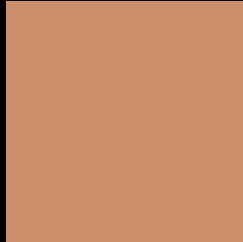
Large Text (above 18pt) WCAG AA × Fail

Any Text WCAG AA × Fail

Large Text (above 18pt) WCAG AAA × Fail

Any Text WCAG AAA × Fail

# Black Background



This preview shows how the Decimal color 13340779 looks on a black background.

## Color Contrast Check

Large Text (above 18pt) WCAG AA ✓ Pass

Any Text WCAG AA ✓ Pass

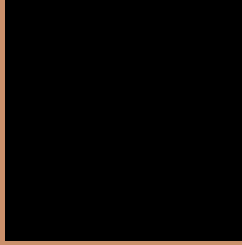
Large Text (above 18pt) WCAG AAA ✓ Pass

Any Text WCAG AAA ✓ Pass

If you want to check with other color combinations, try the [Color Contrast Checker](#).



## Decimal 13340779 Background



This preview shows how black text looks on a background with the Decimal color 13340779.




This preview shows how white text looks on a background with the Decimal color 13340779.

# Color Blindness Simulation

Color vision deficiency is a very complex topic, and I could not describe the different causes any better than Wikipedia does, so if you want to learn more, you should check out their [article about color blindness](#).

## Dichromacy





**Tritanopia**  
13601429

# Trichromacy



**Original Color**  
13340779

**Protanomaly**  
11901039

**Deuteranomaly**  
12686442

**Tritanomaly**  
13536390

# Monochromacy



**Original Color**  
13340779

**Achromatopsia**  
10329501

**Achromatomaly**  
11442315

# CSS Examples

## Text

The CSS property to change the color of the text to Decimal 13340779 is called "color". The color property can be set on classes, ids or directly on the HTML element.

This example shows how text in the color #CB906B looks like.

```
.text, #text, p{  
    color:#CB906B  
}
```

If you want to add a text shadow in that color use the text-shadow property, you can generate a text shadow directly with our [CSS Text Shadow Generator](#).

Here you see how black text with a 4 pixel #CB906B colored shadow looks like.

```
.shadow{ text-shadow: 4px 4px 2px #CB906B
}
```

## Border

The CSS property to change the border of an element to Decimal 13340779 is called "border". The border property can be set on classes, ids or directly on the HTML element.

This example shows the color as border, it can be applied via the CSS property "border" or "border-color".

```
.border, #border, table{ border:4px solid
#CB906B }
```

If only the border color should be changed use the property `border-color`.

```
.border{ border-color:#CB906B }
```

If you want to add a box shadow in that color use:

Here you see how a box with a 4 pixel #CB906B colored shadow looks like.

```
.boxshadow{ -moz-box-shadow:4px 4px 4px  
4px #CB906B; -webkit-box-shadow:4px 4px  
4px 4px #CB906B; box-shadow:4px 4px 4px  
4px #CB906B }
```

# Background

The CSS property to change the background color of an element to Decimal 13340779 is called "background". The background property can be set on classes, ids or directly on the HTML element.

```
.background, #background, body{  
background:#CB906B }
```

If only the background color should be changed can be used:

```
.background{ background-color:#CB906B }
```

This example shows the color as background, it is applied via the CSS property "background".

To optimize and compress your CSS code, you can use our [online CSS compressor and optimizer](#) based on csstidy. If you want to create a linear or radial gradient as background or border, check our [CSS Gradient Generator](#).



Hey! You found this booklet interesting? Support Converting Colors with the new Membership Option!

The pro membership hides all ads, plus gives you double the colors in the color bucket, and more awesome pro features!

**[Learn more, Memberships starting at \\$2.50/m!](#)**

**Follow me  
on Twitter!**

@ConvertingColor