

Converting Colors

Decimal(13342080)

Have a look what the booklet for
Decimal(13342080) contains.

Decimal(13342080)	3
<i>Conversions</i>	4
<i>Details</i>	6
<i>Harmonies</i>	11
<i>Previews</i>	23
<i>Color Blindness Simulation</i>	26
<i>CSS Examples</i>	29

Color

Decimal(13342080)

Conversions

Conversions Part 1

Format	Color
Hex	CB9580
RGB	203, 149, 128
RGB Percent	80%, 58%, 50%
CMY	0.2039, 0.4157, 0.4980
CMYK	0.00, 0.27, 0.37, 0.20
HSL	17°, 42%, 65%
HSV	17°, 37%, 80%
XYZ	39.2723, 35.7499, 25.2526
YIQ	162.7520, 38.9250, 4.9170

Conversions

Conversions Part 2

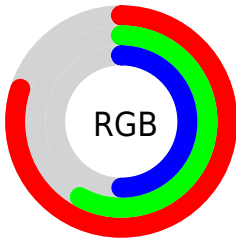
Format	Color
R _Y B	203, 157, 128
Decimal	13342080
CIE Lab	66.33, 17.54, 19.07
CIE LCh	66, 25.910, 47.380
Yxy	35.7499, 0.3916, 0.3565
Android (android.graphics.Color)	4291532160 (0xFFCB9580)
YUV	162.7520, -17.1327, 35.2975
Hunter-Lab	59.7912, 12.6085, 16.8129

Details

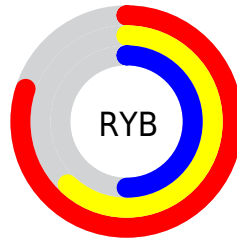
The Decimal color **13342080** is a light color, and the websafe version is hex **CC9999**. A complement of this color would be **8435403**, and the grayscale version is **10724259**.

A 20% lighter version of the original color is **16763829**, and **9658959** is the 20% darker color. If you saturate the color by 10%, you get **13338220**, and if you desaturate by 10%, it is **13345940**.

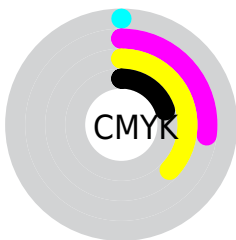
Distribution



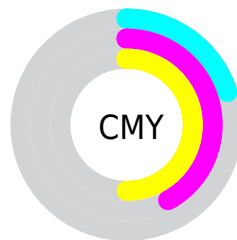
- Red (80%)
- Green (58%)
- Blue (50%)



- Red (80%)
- Yellow (62%)
- Blue (50%)



- Cyan (0%)
- Magenta (27%)
- Yellow (37%)
- Black (20%)



- Cyan (20%)
- Magenta (42%)
- Yellow (50%)

Brightness & Saturation Gradients

These gradients show how the Decimal color 13342080 changes by changing the brightness by 10 percent. The first figure shows a shift by +10% for each color and the second figure -10%.

Similar to the brightness gradients but the following saturation gradients show a change of the Decimal color 13342080 by changing the saturation by 10% instead.

 13342080

 13342080

16777215

 11500391

 16763829

 9658959

 16771024

 7883320

 16777197

 6173474

 4529421

 2885632

 262144

 0

 13342080

 13342080

 13338220

 13345940

 13334615

 13349545

 13330755

 13353405

 13327151

 13357009

 13323291

 13360870

 13319430

 13364730

 13318400

 13368319

 13369343

Harmonies

Analogous

The Analogous color harmony consists of three colors that are next to each other on the color wheel.



13668756



13342080



12295284

Triad

The Triadic color harmony groups three colors that are evenly spaced from another and form a triangle on the color wheel.



13342080



7384726



9936845

Complementary

The Complementary color scheme is a pair of colors which are on the opposite of each other on the color wheel.



13342080



8435403

Split Complementary

Split-complementary colors differ from the complementary color scheme. The scheme consists of three colors, the original color and two neighbors of the complement color.



7775950



13342080



6139566

Square

The Square scheme is like the rectangle color scheme, but the four colors are evenly spaced on the color wheel.



13342080



9087617



6204611



11900865

Rectangle

The Rectangle color scheme consists of four colors that form a rectangle on the color wheel.



13342080



11313779



6204611



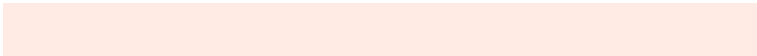
9216463

Sweetspot

The Sweet Spot groups the original color and five complimentary colors.



13342080



16772067



13336759



8418415



0



8421504

Same Dimension

The Same Dimension uses a secret algorithm to generate beautiful new colors.



13342080



16756367



13351552



6709084



10890752



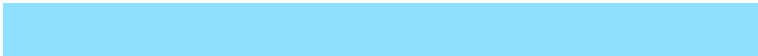
2493184

Inverse Universe

The Inverse Universe completely reimagines the original color for something new.



8435403



9429247



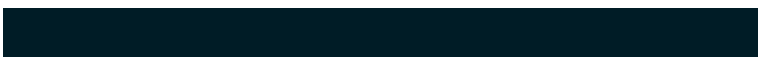
8426187



6054758



30630



7206

Previews

White Background



This preview shows how the Decimal color 13342080 looks on a white background.

Color Contrast Check

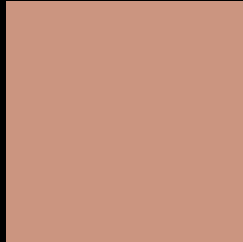
Large Text (above 18pt) WCAG AA × Fail

Any Text WCAG AA × Fail

Large Text (above 18pt) WCAG AAA × Fail

Any Text WCAG AAA × Fail

Black Background



This preview shows how the Decimal color 13342080 looks on a black background.

Color Contrast Check

Large Text (above 18pt) WCAG AA ✓ Pass

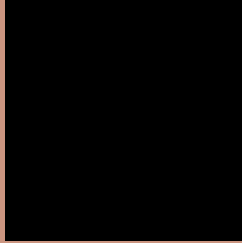
Any Text WCAG AA ✓ Pass

Large Text (above 18pt) WCAG AAA ✓ Pass

Any Text WCAG AAA ✓ Pass

If you want to check with other color combinations, try the [Color Contrast Checker](#).

Decimal 13342080 Background



This preview shows how black text looks on a background with the Decimal color 13342080.



This preview shows how white text looks on a background with the Decimal color 13342080.

Color Blindness Simulation

Color vision deficiency is a very complex topic, and I could not describe the different causes any better than Wikipedia does, so if you want to learn more, you should check out their [article about color blindness](#).


Dichromacy



Original Color
13342080

Protanopia
11248006

Deuteranopia
12426111



Tritanopia
13537692

Trichromacy



Original Color
13342080

Protanomaly
12033412

Deuteranomaly
12753279

Tritanomaly
13472402

Monochromacy



Original Color
13342080

Achromatopsia
10724259

Achromatomaly
11706006

CSS Examples

Text

The CSS property to change the color of the text to Decimal 13342080 is called "color". The color property can be set on classes, ids or directly on the HTML element.

This example shows how text in the color #CB9580 looks like.

```
.text, #text, p{  
    color:#CB9580  
}
```

If you want to add a text shadow in that color use the text-shadow property, you can generate a text shadow directly with our [CSS Text Shadow Generator](#).

Here you see how black text with a 4 pixel #CB9580 colored shadow looks like.

```
.shadow{ text-shadow: 4px 4px 2px #CB9580
}
```

Border

The CSS property to change the border of an element to Decimal 13342080 is called "border". The border property can be set on classes, ids or directly on the HTML element.

This example shows the color as border, it can be applied via the CSS property "border" or "border-color".

```
.border, #border, table{ border:4px solid
#CB9580 }
```

If only the border color should be changed use the property `border-color`.

```
.border{ border-color:#CB9580 }
```

If you want to add a box shadow in that color use:

Here you see how a box with a 4 pixel #CB9580 colored shadow looks like.

```
.boxshadow{ -moz-box-shadow:4px 4px 4px  
4px #CB9580; -webkit-box-shadow:4px 4px  
4px 4px #CB9580; box-shadow:4px 4px 4px  
4px #CB9580 }
```

Background

The CSS property to change the background color of an element to Decimal 13342080 is called "background". The background property can be set on classes, ids or directly on the HTML element.

```
.background, #background, body{  
background:#CB9580 }
```

If only the background color should be changed can be used:

```
.background{ background-color:#CB9580 }
```

This example shows the color as background, it is applied via the CSS property "background".

To optimize and compress your CSS code, you can use our [online CSS compressor and optimizer](#) based on csstidy. If you want to create a linear or radial gradient as background or border, check our [CSS Gradient Generator](#).

Hey! You found this booklet interesting? Support Converting Colors with the new Membership Option!

The pro membership hides all ads, plus gives you double the colors in the color bucket, and more awesome pro features!

[Learn more, Memberships starting at \\$2.50/m!](#)

**Follow me
on Twitter!**

@ConvertingColor