

Converting Colors

Decimal(13342614)

Have a look what the booklet for
Decimal(13342614) contains.

Decimal(13342614)	3
<i>Conversions</i>	4
<i>Details</i>	6
<i>Harmonies</i>	11
<i>Previews</i>	23
<i>Color Blindness Simulation</i>	26
<i>CSS Examples</i>	29

Color

Decimal(13342614)

Conversions

Conversions Part 1

Format	Color
Hex	CB9796
RGB	203, 151, 150
RGB Percent	80%, 59%, 59%
CMY	0.2039, 0.4078, 0.4118
CMYK	0.00, 0.26, 0.26, 0.20
HSL	1°, 34%, 69%
HSV	1°, 26%, 80%
XYZ	41.2002, 37.0317, 33.8305
YIQ	166.4340, 31.3130, 10.7130

Conversions

Conversions Part 2

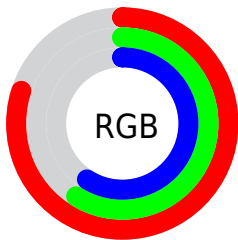
Format	Color
R _Y B	203, 151, 150
Decimal	13342614
CIE Lab	67.30, 19.35, 8.16
CIE LCh	67, 21.001, 22.870
Yxy	37.0317, 0.3677, 0.3305
Android (android.graphics.Color)	4291532694 (0xFFCB9796)
YUV	166.4340, -8.1020, 32.0684
Hunter-Lab	60.8537, 14.3572, 9.6364

Details

The Decimal color **13342614** is a light color, and the websafe version is hex **CC9999**. A complement of this color would be **9882315**, and the grayscale version is **10921638**.

A 20% lighter version of the original color is **16764364**, and **9725027** is the 20% darker color. If you saturate the color by 10%, you get **13337474**, and if you desaturate by 10%, it is **13347754**.

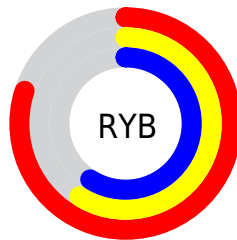
Distribution



Red (80%)

Green (59%)

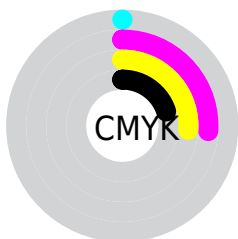
Blue (59%)



Red (80%)

Yellow (59%)

Blue (59%)

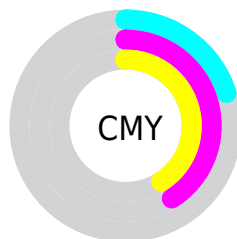


Cyan (0%)

Magenta (26%)

Yellow (26%)

Black (20%)



Cyan (20%)

Magenta (41%)

Yellow (41%)

Brightness & Saturation Gradients

These gradients show how the Decimal color 13342614 changes by changing the brightness by 10 percent. The first figure shows a shift by +10% for each color and the second figure -10%.

Similar to the brightness gradients but the following saturation gradients show a change of the Decimal color 13342614 by changing the saturation by 10% instead.

 13342614

 13342614

16777215

 11500924

 16764364

 9725027

 16771816

 7949387

 6239285

 4595232

 3082504

 1179648

 0

 13342614

 13342614

 13337474

 13347754

 13332333

 13352895

 13327193

 13358035

 13322053

 13363175

 13316913

 13368316

 13311772

 13369343

 13306888

 13304832

Harmonies

Analogous

The Analogous color harmony consists of three colors that are next to each other on the color wheel.



13080489



13342614



12950406

Triad

The Triadic color harmony groups three colors that are evenly spaced from another and form a triangle on the color wheel.



13342614



9284749



8955849

Complementary

The Complementary color scheme is a pair of colors which are on the opposite of each other on the color wheel.



13342614



9882315

Split Complementary

Split-complementary colors differ from the complementary color scheme. The scheme consists of three colors, the original color and two neighbors of the complement color.



7646401



13342614



8040094

Square

The Square scheme is like the rectangle color scheme, but the four colors are evenly spaced on the color wheel.



13342614



10725249



7319218



10592711

Rectangle

The Rectangle color scheme consists of four colors that form a rectangle on the color wheel.



13342614



12361600



7319218



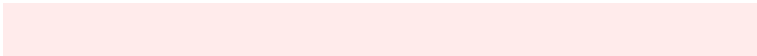
8432071

Sweetspot

The Sweet Spot groups the original color and five complimentary colors.



13342614



16772075



13342410



8418163



0



8421504

Same Dimension

The Same Dimension uses a secret algorithm to generate beautiful new colors.



13342614



16757168



13349270



6708316



10879744



2490624

Inverse Universe

The Inverse Universe completely reimagines the original color for something new.



9882315



11599615



9875659



6055526



41894



9766

Previews

White Background



This preview shows how the Decimal color 13342614 looks on a white background.

Color Contrast Check

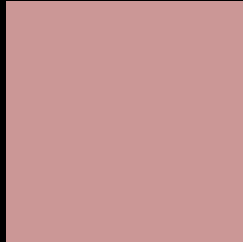
Large Text (above 18pt) WCAG AA × Fail

Any Text WCAG AA × Fail

Large Text (above 18pt) WCAG AAA × Fail

Any Text WCAG AAA × Fail

Black Background



This preview shows how the Decimal color 13342614 looks on a black background.

Color Contrast Check

Large Text (above 18pt) WCAG AA ✓ Pass

Any Text WCAG AA ✓ Pass

Large Text (above 18pt) WCAG AAA ✓ Pass

Any Text WCAG AAA ✓ Pass

If you want to check with other color combinations, try the [Color Contrast Checker](#).

Decimal 13342614 Background



This preview shows how black text looks on a background with the Decimal color 13342614.



This preview shows how white text looks on a background with the Decimal color 13342614.

Color Blindness Simulation

Color vision deficiency is a very complex topic, and I could not describe the different causes any better than Wikipedia does, so if you want to learn more, you should check out their [article about color blindness](#).

Dichromacy



Original Color
13342614

Protanopia
11117469

Deuteranopia
12230293



Tritanopia
13407649

Trichromacy



Original Color
13342614

Protanomaly
11902874

Deuteranomaly
12622741

Tritanomaly
13407901

Monochromacy



Original Color
13342614

Achromatopsia
10921638

Achromatomaly
11772320

CSS Examples

Text

The CSS property to change the color of the text to Decimal 13342614 is called "color". The color property can be set on classes, ids or directly on the HTML element.

This example shows how text in the color #CB9796 looks like.

```
.text, #text, p{  
  color:#CB9796  
}
```

If you want to add a text shadow in that color use the text-shadow property, you can generate a text shadow directly with our [CSS Text Shadow Generator](#).

Here you see how black text with a 4 pixel #CB9796 colored shadow looks like.

```
.shadow{ text-shadow: 4px 4px 2px #CB9796
}
```

Border

The CSS property to change the border of an element to Decimal 13342614 is called "border". The border property can be set on classes, ids or directly on the HTML element.

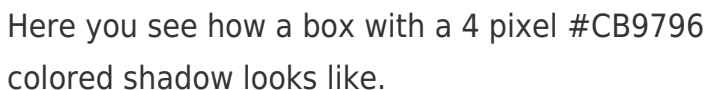
This example shows the color as border, it can be applied via the CSS property "border" or "border-color".

```
.border, #border, table{ border:4px solid
#CB9796 }
```

If only the border color should be changed use the property `border-color`.

```
.border{ border-color:#CB9796 }
```

If you want to add a box shadow in that color use:



Here you see how a box with a 4 pixel #CB9796 colored shadow looks like.

```
.boxshadow{ -moz-box-shadow:4px 4px 4px  
4px #CB9796; -webkit-box-shadow:4px 4px  
4px 4px #CB9796; box-shadow:4px 4px 4px  
4px #CB9796 }
```

Background

The CSS property to change the background color of an element to Decimal 13342614 is called "background". The background property can be set on classes, ids or directly on the HTML element.

```
.background, #background, body{  
background:#CB9796 }
```

If only the background color should be changed can be used:

```
.background{ background-color:#CB9796 }
```

This example shows the color as background, it is applied via the CSS property "background".

To optimize and compress your CSS code, you can use our [online CSS compressor and optimizer](#) based on csstidy. If you want to create a linear or radial gradient as background or border, check our [CSS Gradient Generator](#).

Hey! You found this booklet interesting? Support Converting Colors with the new Membership Option!

The pro membership hides all ads, plus gives you double the colors in the color bucket, and more awesome pro features!

[Learn more, Memberships starting at \\$2.50/m!](#)

**Follow me
on Twitter!**

@ConvertingColor