

# Converting Colors

Decimal(13343369)

Have a look what the booklet for  
Decimal(13343369) contains.

<b>Decimal(13343369)</b> .....	3
<i><b>Conversions</b></i> .....	4
<i><b>Details</b></i> .....	6
<i><b>Harmonies</b></i> .....	11
<i><b>Previews</b></i> .....	23
<i><b>Color Blindness Simulation</b></i> .....	26
<i><b>CSS Examples</b></i> .....	29

# **Color**

**Decimal(13343369)**

# Conversions

## Conversions Part 1

Format	Color
Hex	CB9A89
RGB	203, 154, 137
RGB Percent	80%, 60%, 54%
CMY	0.2039, 0.3961, 0.4627
CMYK	0.00, 0.24, 0.33, 0.20
HSL	15°, 39%, 67%
HSV	15°, 33%, 80%
XYZ	40.6996, 37.6139, 28.7820
YIQ	166.7130, 34.6610, 5.1010

# Conversions

## Conversions Part 2

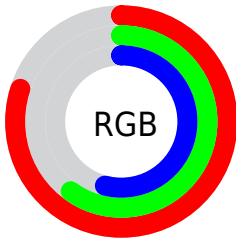
Format	Color
R <sub>Y</sub> B	203, 160, 137
Decimal	13343369
CIE Lab	67.74, 15.94, 16.01
CIE LCh	68, 22.595, 45.135
Yxy	37.6139, 0.3800, 0.3512
Android (android.graphics.Color)	4291533449 (0xFFCB9A89)
YUV	166.7130, -14.6485, 31.8237
Hunter-Lab	61.3301, 11.1274, 15.1065

# Details

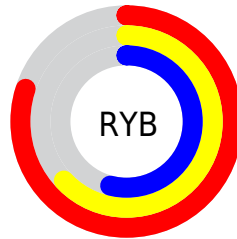
The Decimal color **13343369** is a light color, and the websafe version is hex **CC9999**. A complement of this color would be **9026251**, and the grayscale version is **10987431**.

A 20% lighter version of the original color is **16765374**, and **9725783** is the 20% darker color. If you saturate the color by 10%, you get **13339509**, and if you desaturate by 10%, it is **13347229**.

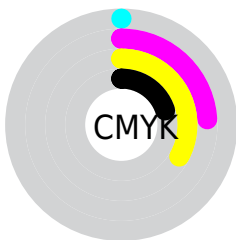
# Distribution



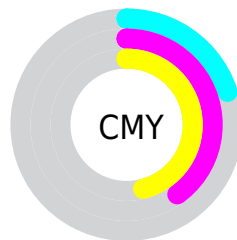
- Red (80%)
- Green (60%)
- Blue (54%)



- Red (80%)
- Yellow (63%)
- Blue (54%)



- Cyan (0%)
- Magenta (24%)
- Yellow (33%)
- Black (20%)



- Cyan (20%)
- Magenta (40%)
- Yellow (46%)

# Brightness & Saturation Gradients

These gradients show how the Decimal color 13343369 changes by changing the brightness by 10 percent. The first figure shows a shift by +10% for each color and the second figure -10%.

Similar to the brightness gradients but the following saturation gradients show a change of the Decimal color 13343369 by changing the saturation by 10% instead.



 13343369

 13343369

16777215

 11501680

 16765374

 9725783

 16772570

 7950144

 16777207

 6240042

 4596245

 3017984

 983040

 0

 13343369

 13343369

 13339509

 13347229

 13335648

 13351090

 13331788

 13354950

 13327928

 13358810

 13324068

 13362671

 13320207

 13366527

 13317120

 13369343

# Harmonies

## Analogous

The Analogous color harmony consists of three colors that are next to each other on the color wheel.



13604763



13343369



12492926

# Triad

The Triadic color harmony groups three colors that are evenly spaced from another and form a triangle on the color wheel.



13343369



8171674



10200012

# Complementary

The Complementary color scheme is a pair of colors which are on the opposite of each other on the color wheel.



13343369



9026251

# Split Complementary

Split-complementary colors differ from the complementary color scheme. The scheme consists of three colors, the original color and two neighbors of the complement color.



8366796



13343369



7188911

# Square

The Square scheme is like the rectangle color scheme, but the four colors are evenly spaced on the color wheel.



13343369



9612680



7188417



11902146

# Rectangle

The Rectangle color scheme consists of four colors that form a rectangle on the color wheel.



13343369



11642236



7188417



9545421

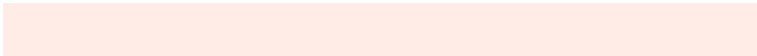


# Sweetspot

The Sweet Spot groups the original color and five complimentary colors.



13343369



16772326



13339067



8418416



0



8421504



# Same Dimension

The Same Dimension uses a secret algorithm to generate beautiful new colors.



13343369



16758172



13351817



6708828



10889984



2492928

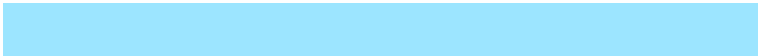


# Inverse Universe

The Inverse Universe completely reimagines the original color for something new.



9026251



10282495



9018059



6054758



31654



7206



# Previews

## White Background



This preview shows how the Decimal color 13343369 looks on a white background.

## Color Contrast Check

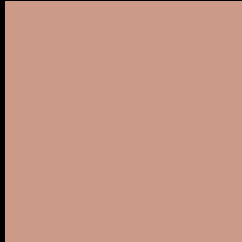
Large Text (above 18pt) WCAG AA × Fail

Any Text WCAG AA × Fail

Large Text (above 18pt) WCAG AAA × Fail

Any Text WCAG AAA × Fail

# Black Background



This preview shows how the Decimal color 13343369 looks on a black background.

## Color Contrast Check

Large Text (above 18pt) WCAG AA ✓ Pass

Any Text WCAG AA ✓ Pass

Large Text (above 18pt) WCAG AAA ✓ Pass

Any Text WCAG AAA ✓ Pass

If you want to check with other color combinations, try the [Color Contrast Checker](#).



## Decimal 13343369 Background



This preview shows how black text looks on a background with the Decimal color 13343369.




This preview shows how white text looks on a background with the Decimal color 13343369.

# Color Blindness Simulation

Color vision deficiency is a very complex topic, and I could not describe the different causes any better than Wikipedia does, so if you want to learn more, you should check out their [article about color blindness](#).

## Dichromacy





**Tritanopia**  
13538978

# Trichromacy



**Original Color**  
13343369

**Protanomaly**  
12165516

**Deuteranomaly**  
12819848

**Tritanomaly**  
13473689

# Monochromacy



**Original Color**  
13343369

**Achromatopsia**  
10987431

**Achromatomaly**  
11838108

# CSS Examples

## Text

The CSS property to change the color of the text to Decimal 13343369 is called "color". The color property can be set on classes, ids or directly on the HTML element.

This example shows how text in the color #CB9A89 looks like.

```
.text, #text, p{  
  color:#CB9A89  
}
```

If you want to add a text shadow in that color use the text-shadow property, you can generate a text shadow directly with our [CSS Text Shadow Generator](#).

Here you see how black text with a 4 pixel #CB9A89 colored shadow looks like.

```
.shadow{ text-shadow: 4px 4px 2px #CB9A89
}
```

## Border

The CSS property to change the border of an element to Decimal 13343369 is called "border". The border property can be set on classes, ids or directly on the HTML element.

This example shows the color as border, it can be applied via the CSS property "border" or "border-color".

```
.border, #border, table{ border:4px solid
#CB9A89 }
```

If only the border color should be changed use the property `border-color`.

```
.border{ border-color:#CB9A89 }
```

If you want to add a box shadow in that color use:

Here you see how a box with a 4 pixel #CB9A89 colored shadow looks like.

```
.boxshadow{ -moz-box-shadow:4px 4px 4px  
4px #CB9A89; -webkit-box-shadow:4px 4px  
4px 4px #CB9A89; box-shadow:4px 4px 4px  
4px #CB9A89 }
```

# Background

The CSS property to change the background color of an element to Decimal 13343369 is called "background". The background property can be set on classes, ids or directly on the HTML element.

```
.background, #background, body{  
background:#CB9A89 }
```

If only the background color should be changed can be used:

```
.background{ background-color:#CB9A89 }
```

This example shows the color as background, it is applied via the CSS property "background".

To optimize and compress your CSS code, you can use our [online CSS compressor and optimizer](#) based on csstidy. If you want to create a linear or radial gradient as background or border, check our [CSS Gradient Generator](#).



Hey! You found this booklet interesting? Support Converting Colors with the new Membership Option!

The pro membership hides all ads, plus gives you double the colors in the color bucket, and more awesome pro features!

**[Learn more, Memberships starting at \\$2.50/m!](#)**

**Follow me  
on Twitter!**

@ConvertingColor