

Converting Colors

Decimal(13345440)

Have a look what the booklet for
Decimal(13345440) contains.

Decimal(13345440)	3
<i>Conversions</i>	4
<i>Details</i>	6
<i>Harmonies</i>	11
<i>Previews</i>	23
<i>Color Blindness Simulation</i>	26
<i>CSS Examples</i>	29

Color

Decimal(13345440)

Conversions

Conversions Part 1

Format	Color
Hex	CBA2A0
RGB	203, 162, 160
RGB Percent	80%, 64%, 63%
CMY	0.2039, 0.3647, 0.3725
CMYK	0.00, 0.20, 0.21, 0.20
HSL	3°, 29%, 71%
HSV	3°, 21%, 80%
XYZ	43.8941, 41.0752, 38.8725
YIQ	174.0310, 25.0780, 8.0700

Conversions

Conversions Part 2

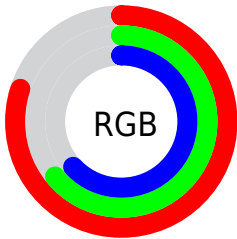
Format	Color
R _Y B	203, 162, 160
Decimal	13345440
CIE Lab	70.23, 14.80, 6.79
CIE LCh	70, 16.286, 24.636
Yxy	41.0752, 0.3544, 0.3317
Android (android.graphics.Color)	4291535520 (0xFFCBA2A0)
YUV	174.0310, -6.9173, 25.4058
Hunter-Lab	64.0900, 10.0941, 8.9018

Details

The Decimal color **13345440** is a light color, and the websafe version is hex **CC9999**. A complement of this color would be **10537419**, and the grayscale version is **11447982**.

A 20% lighter version of the original color is **16767447**, and **9727597** is the 20% darker color. If you saturate the color by 10%, you get **13340556**, and if you desaturate by 10%, it is **13350324**.

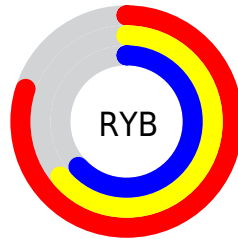
Distribution



Red (80%)

Green (64%)

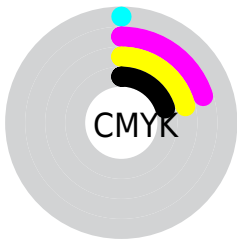
Blue (63%)



Red (80%)

Yellow (64%)

Blue (63%)

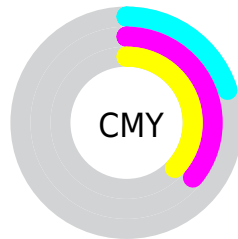


Cyan (0%)

Magenta (20%)

Yellow (21%)

Black (20%)



Cyan (20%)

Magenta (36%)

Yellow (37%)

Brightness & Saturation Gradients

These gradients show how the Decimal color 13345440 changes by changing the brightness by 10 percent. The first figure shows a shift by +10% for each color and the second figure -10%.

Similar to the brightness gradients but the following saturation gradients show a change of the Decimal color 13345440 by changing the saturation by 10% instead.

 13345440

 13345440

16777215

 11503750

 16767447


 9727597

 16774643

 8017492

 6307389

 4728871

 3150611

 1900545

 0

 13345440

 13345440

 13340556

 13350324

 13335415

 13355465

 13330531

 13360349

 13325647

 13365233

 13320507

 13369343

 13315622

 13310738

 13306112

Harmonies

Analogous

The Analogous color harmony consists of three colors that are next to each other on the color wheel.



13148847



13345440



13018516

Triad

The Triadic color harmony groups three colors that are evenly spaced from another and form a triangle on the color wheel.



13345440



10072730



10006217

Complementary

The Complementary color scheme is a pair of colors which are on the opposite of each other on the color wheel.



13345440



10537419

Split Complementary

Split-complementary colors differ from the complementary color scheme. The scheme consists of three colors, the original color and two neighbors of the complement color.



9024195



13345440



9155752

Square

The Square scheme is like the rectangle color scheme, but the four colors are evenly spaced on the color wheel.



13345440



11186065



8762551



11250118

Rectangle

The Rectangle color scheme consists of four colors that form a rectangle on the color wheel.



13345440



12560528



8762551



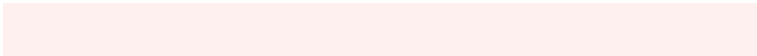
9613256

Sweetspot

The Sweet Spot groups the original color and five complimentary colors.



13345440



16773360



13344970



8419191



0



8421504

Same Dimension

The Same Dimension uses a secret algorithm to generate beautiful new colors.



13345440



16761535



13350816



6708316



10881024



2490880

Inverse Universe

The Inverse Universe completely reimagines the original color for something new.



10537419



12582143



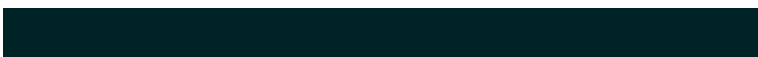
10532043



6055526



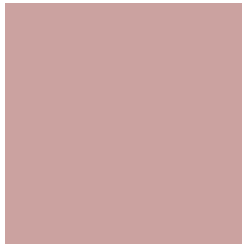
40614



9254

Previews

White Background



This preview shows how the Decimal color 13345440 looks on a white background.

Color Contrast Check

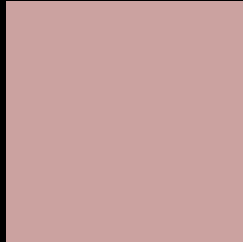
Large Text (above 18pt) WCAG AA × Fail

Any Text WCAG AA × Fail

Large Text (above 18pt) WCAG AAA × Fail

Any Text WCAG AAA × Fail

Black Background



This preview shows how the Decimal color 13345440 looks on a black background.

Color Contrast Check

Large Text (above 18pt) WCAG AA ✓ Pass

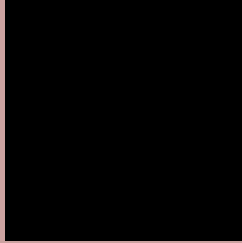
Any Text WCAG AA ✓ Pass

Large Text (above 18pt) WCAG AAA ✓ Pass

Any Text WCAG AAA ✓ Pass

If you want to check with other color combinations, try the [Color Contrast Checker](#).

Decimal 13345440 Background



This preview shows how black text looks on a background with the Decimal color 13345440.



This preview shows how white text looks on a background with the Decimal color 13345440.

Color Blindness Simulation

Color vision deficiency is a very complex topic, and I could not describe the different causes any better than Wikipedia does, so if you want to learn more, you should check out their [article about color blindness](#).


Dichromacy



Original Color
13345440

Protanopia
11643813

Deuteranopia
12691103



Tritanopia
13410476

Trichromacy



Original Color
13345440

Protanomaly
12232867

Deuteranomaly
12952991

Tritanomaly
13410728

Monochromacy



Original Color
13345440

Achromatopsia
11447982

Achromatomaly
12167849

CSS Examples

Text

The CSS property to change the color of the text to Decimal 13345440 is called "color". The color property can be set on classes, ids or directly on the HTML element.

This example shows how text in the color #CBA2A0 looks like.

```
.text, #text, p{  
  color:#CBA2A0  
}
```

If you want to add a text shadow in that color use the text-shadow property, you can generate a text shadow directly with our [CSS Text Shadow Generator](#).

Here you see how black text with a 4 pixel #CBA2A0 colored shadow looks like.

```
.shadow{ text-shadow: 4px 4px 2px #CBA2A0
}
```

Border

The CSS property to change the border of an element to Decimal 13345440 is called "border". The border property can be set on classes, ids or directly on the HTML element.

This example shows the color as border, it can be applied via the CSS property "border" or "border-color".

```
.border, #border, table{ border:4px solid
#CBA2A0 }
```

If only the border color should be changed use the property `border-color`.

```
.border{ border-color:#CBA2A0 }
```

If you want to add a box shadow in that color use:

Here you see how a box with a 4 pixel #CBA2A0 colored shadow looks like.

```
.boxshadow{ -moz-box-shadow:4px 4px 4px  
4px #CBA2A0; -webkit-box-shadow:4px 4px  
4px 4px #CBA2A0; box-shadow:4px 4px 4px  
4px #CBA2A0 }
```

Background

The CSS property to change the background color of an element to Decimal 13345440 is called "background". The background property can be set on classes, ids or directly on the HTML element.

```
.background, #background, body{  
background:#CBA2A0 }
```

If only the background color should be changed can be used:

```
.background{ background-color:#CBA2A0 }
```

This example shows the color as background, it is applied via the CSS property "background".

To optimize and compress your CSS code, you can use our [online CSS compressor and optimizer](#) based on csstidy. If you want to create a linear or radial gradient as background or border, check our [CSS Gradient Generator](#).

Hey! You found this booklet interesting? Support Converting Colors with the new Membership Option!

The pro membership hides all ads, plus gives you double the colors in the color bucket, and more awesome pro features!

[Learn more, Memberships starting at \\$2.50/m!](#)

**Follow me
on Twitter!**

@ConvertingColor