

Converting Colors

Decimal(13345663)

Have a look what the booklet for
Decimal(13345663) contains.

Decimal(13345663)	3
<i>Conversions</i>	4
<i>Details</i>	6
<i>Harmonies</i>	11
<i>Previews</i>	23
<i>Color Blindness Simulation</i>	26
<i>CSS Examples</i>	29

Color

Decimal(13345663)

Conversions

Conversions Part 1

Format	Color
Hex	CBA37F
RGB	203, 163, 127
RGB Percent	80%, 64%, 50%
CMY	0.2039, 0.3608, 0.5020
CMYK	0.00, 0.20, 0.37, 0.20
HSL	28°, 42%, 65%
HSV	28°, 37%, 80%
XYZ	41.5566, 40.4232, 25.6909
YIQ	170.8560, 35.3960, -2.7160

Conversions

Conversions Part 2

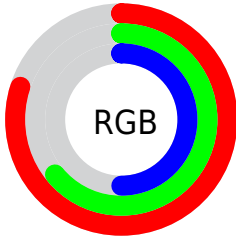
Format	Color
RYB	203, 195, 127
Decimal	13345663
CIELab	69.77, 9.80, 24.29
CIElCh	70, 26.193, 68.040
Yxy	40.4232, 0.3860, 0.3754
Android (android.graphics.Color)	4291535743 (0xFFCBA37F)
YUV	170.8560, -21.6210, 28.1903
Hunter-Lab	63.5792, 5.4072, 20.5478

Details

The Decimal color **13345663** is a light color, and the websafe version is hex **CC9966**. A complement of this color would be **8366027**, and the grayscale version is **11250603**.

A 20% lighter version of the original color is **16767668**, and **9662286** is the 20% darker color. If you saturate the color by 10%, you get **13342827**, and if you desaturate by 10%, it is **13348499**.

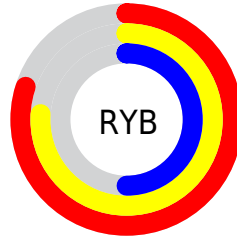
Distribution



Red (80%)

Green (64%)

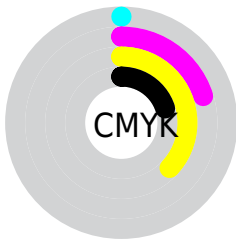
Blue (50%)



Red (80%)

Yellow (76%)

Blue (50%)

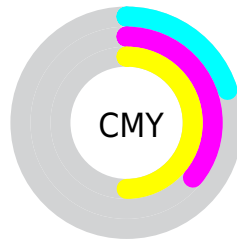


Cyan (0%)

Magenta (20%)

Yellow (37%)

Black (20%)



Cyan (20%)

Magenta (36%)

Yellow (50%)

Brightness & Saturation Gradients

These gradients show how the Decimal color 13345663 changes by changing the brightness by 10 percent. The first figure shows a shift by +10% for each color and the second figure -10%.

Similar to the brightness gradients but the following saturation gradients show a change of the Decimal color 13345663 by changing the saturation by 10% instead.

 13345663

 13345663

16777215

 11503974

 16767668

 9662286

 16774864

 7952182

 16777196

 6242336

 4532746

 2954496

 1310720

 0

 13345663

 13345663

13342827

13348499

13340246

13351080

13337410

13353916

13334574

13356752

13331994

13359333

13329157

13362169

13328384

13364991

13367551

13369343

Harmonies

Analogous

The Analogous color harmony consists of three colors that are next to each other on the color wheel.



14195854



13345663



11905915

Triad

The Triadic color harmony groups three colors that are evenly spaced from another and form a triangle on the color wheel.



13345663



6994096



11969232

Complementary

The Complementary color scheme is a pair of colors which are on the opposite of each other on the color wheel.



13345663



8366027

Split Complementary

Split-complementary colors differ from the complementary color scheme. The scheme consists of three colors, the original color and two neighbors of the complement color.



9874137



13345663



6600391

Square

The Square scheme is like the rectangle color scheme, but the four colors are evenly spaced on the color wheel.



13345663



8435352



7779030



13540285

Rectangle

The Rectangle color scheme consists of four colors that form a rectangle on the color wheel.



13345663



10793088



7779030



11314644

Sweetspot

The Sweet Spot groups the original color and five complimentary colors.



13345663



16773347



13336488



8419183



0



8421504

Same Dimension

The Same Dimension uses a secret algorithm to generate beautiful new colors.



13345663



16761740



13355135



6709596



10899200



2494976

Inverse Universe

The Inverse Universe completely reimagines the original color for something new.



8366027



9226751



8356555



6054246



22438



5158

Previews

White Background



This preview shows how the Decimal color 13345663 looks on a white background.

Color Contrast Check

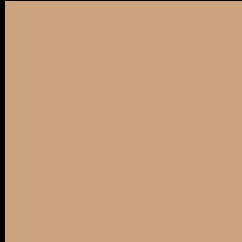
Large Text (above 18pt) WCAG AA × Fail

Any Text WCAG AA × Fail

Large Text (above 18pt) WCAG AAA × Fail

Any Text WCAG AAA × Fail

Black Background



This preview shows how the Decimal color 13345663 looks on a black background.

Color Contrast Check

Large Text (above 18pt) WCAG AA ✓ Pass

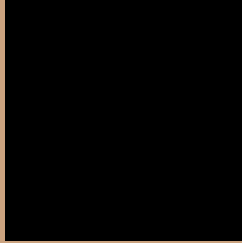
Any Text WCAG AA ✓ Pass

Large Text (above 18pt) WCAG AAA ✓ Pass

Any Text WCAG AAA ✓ Pass

If you want to check with other color combinations, try the [Color Contrast Checker](#).

Decimal 13345663 Background



This preview shows how black text looks on a background with the Decimal color 13345663.




This preview shows how white text looks on a background with the Decimal color 13345663.

Color Blindness Simulation

Color vision deficiency is a very complex topic, and I could not describe the different causes any better than Wikipedia does, so if you want to learn more, you should check out their [article about color blindness](#).

Dichromacy





Tritanopia
13606313

Trichromacy



Original Color
13345663

Protanomaly
12494721

Deuteranomaly
13280383

Tritanomaly
13541274

Monochromacy



Original Color
13345663

Achromatopsia
11250603

Achromatomaly
12036251

CSS Examples

Text

The CSS property to change the color of the text to Decimal 13345663 is called "color". The color property can be set on classes, ids or directly on the HTML element.

This example shows how text in the color #CBA37F looks like.

```
.text, #text, p{  
    color:#CBA37F  
}
```

If you want to add a text shadow in that color use the text-shadow property, you can generate a text shadow directly with our [CSS Text Shadow Generator](#).

Here you see how black text with a 4 pixel #CBA37F colored shadow looks like.

```
.shadow{ text-shadow: 4px 4px 2px #CBA37F
}
```

Border

The CSS property to change the border of an element to Decimal 13345663 is called "border". The border property can be set on classes, ids or directly on the HTML element.

This example shows the color as border, it can be applied via the CSS property "border" or "border-color".

```
.border, #border, table{ border:4px solid
#CBA37F }
```

If only the border color should be changed use the property `border-color`.

```
.border{ border-color:#CBA37F }
```

If you want to add a box shadow in that color use:

Here you see how a box with a 4 pixel #CBA37F colored shadow looks like.

```
.boxshadow{ -moz-box-shadow:4px 4px 4px  
4px #CBA37F; -webkit-box-shadow:4px 4px  
4px 4px #CBA37F; box-shadow:4px 4px 4px  
4px #CBA37F }
```

Background

The CSS property to change the background color of an element to Decimal 13345663 is called "background". The background property can be set on classes, ids or directly on the HTML element.

```
.background, #background, body{  
background:#CBA37F }
```

If only the background color should be changed can be used:

```
.background{ background-color:#CBA37F }
```

This example shows the color as background, it is applied via the CSS property "background".

To optimize and compress your CSS code, you can use our [online CSS compressor and optimizer](#) based on csstidy. If you want to create a linear or radial gradient as background or border, check our [CSS Gradient Generator](#).

Hey! You found this booklet interesting? Support Converting Colors with the new Membership Option!

The pro membership hides all ads, plus gives you double the colors in the color bucket, and more awesome pro features!

[Learn more, Memberships starting at \\$2.50/m!](#)

**Follow me
on Twitter!**

@ConvertingColor