

Converting Colors

Decimal(13346186)

Have a look what the booklet for
Decimal(13346186) contains.

Decimal(13346186)	3
<i>Conversions</i>	4
<i>Details</i>	6
<i>Harmonies</i>	11
<i>Previews</i>	23
<i>Color Blindness Simulation</i>	26
<i>CSS Examples</i>	29

Color

Decimal(13346186)

Conversions

Conversions Part 1

Format	Color
Hex	CBA58A
RGB	203, 165, 138
RGB Percent	80%, 65%, 54%
CMY	0.2039, 0.3529, 0.4588
CMYK	0.00, 0.19, 0.32, 0.20
HSL	25°, 38%, 67%
HSV	25°, 32%, 80%
XYZ	42.6712, 41.4418, 29.7948
YIQ	173.2840, 31.3150, -0.3410

Conversions

Conversions Part 2

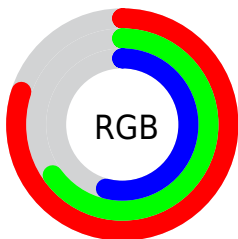
Format	Color
R _Y B	203, 184, 138
Decimal	13346186
CIE Lab	70.48, 10.08, 19.27
CIE LCh	70, 21.743, 62.385
Yxy	41.4418, 0.3746, 0.3638
Android (android.graphics.Color)	4291536266 (0xFFCBA58A)
YUV	173.2840, -17.3950, 26.0609
Hunter-Lab	64.3753, 5.6621, 17.6215

Details

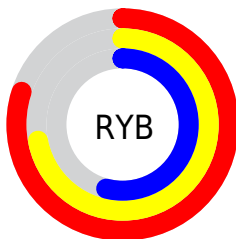
The Decimal color **13346186** is a light color, and the websafe version is hex **CC9999**. A complement of this color would be **9089227**, and the grayscale version is **11382189**.

A 20% lighter version of the original color is **16768192**, and **9728344** is the 20% darker color. If you saturate the color by 10%, you get **13343094**, and if you desaturate by 10%, it is **13349278**.

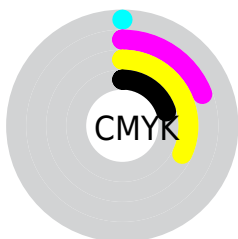
Distribution



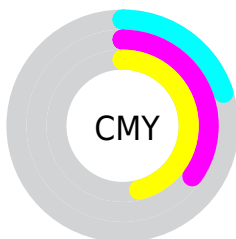
- Red (80%)
- Green (65%)
- Blue (54%)



- Red (80%)
- Yellow (72%)
- Blue (54%)



- Cyan (0%)
- Magenta (19%)
- Yellow (32%)
- Black (20%)



- Cyan (20%)
- Magenta (35%)
- Yellow (46%)

Brightness & Saturation Gradients

These gradients show how the Decimal color 13346186 changes by changing the brightness by 10 percent. The first figure shows a shift by +10% for each color and the second figure -10%.

Similar to the brightness gradients but the following saturation gradients show a change of the Decimal color 13346186 by changing the saturation by 10% instead.

 13346186

 13346186

16777215

 11504496

 16768192

 9728344

 16775643

 7952704

 16777208

 6242602

 4598549

 3085824

 1507328

 0

 13346186

 13346186

 13343094

 13349278

 13340001

 13352371

 13336909

 13355463

 13334073

 13358299

 13330980

 13361392

 13327888

 13364479

 13325312

 13367551

 13369343

Harmonies

Analogous

The Analogous color harmony consists of three colors that are next to each other on the color wheel.



13934744



13346186



12233861

Triad

The Triadic color harmony groups three colors that are evenly spaced from another and form a triangle on the color wheel.



13346186



8173741



11708366

Complementary

The Complementary color scheme is a pair of colors which are on the opposite of each other on the color wheel.



13346186



9089227

Split Complementary

Split-complementary colors differ from the complementary color scheme. The scheme consists of three colors, the original color and two neighbors of the complement color.



9940691



13346186



7714753

Square

The Square scheme is like the rectangle color scheme, but the four colors are evenly spaced on the color wheel.



13346186



9352857



8434639



13083071

Rectangle

The Rectangle color scheme consists of four colors that form a rectangle on the color wheel.



13346186



11317384



8434639



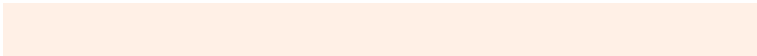
11119057

Sweetspot

The Sweet Spot groups the original color and five complimentary colors.



13346186



16773350



13339313



8419184



0



8421504

Same Dimension

The Same Dimension uses a secret algorithm to generate beautiful new colors.



13346186



16762526



13354378



6709340



10896640



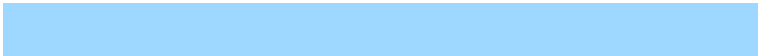
2494464

Inverse Universe

The Inverse Universe completely reimagines the original color for something new.



9089227



10409983



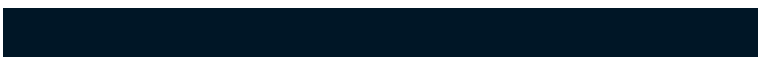
9081035



6054502



24998



5670

Previews

White Background



This preview shows how the Decimal color 13346186 looks on a white background.

Color Contrast Check

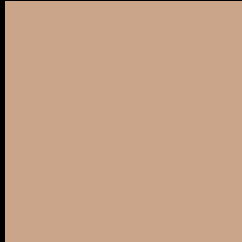
Large Text (above 18pt) WCAG AA × Fail

Any Text WCAG AA × Fail

Large Text (above 18pt) WCAG AAA × Fail

Any Text WCAG AAA × Fail

Black Background



This preview shows how the Decimal color 13346186 looks on a black background.

Color Contrast Check

Large Text (above 18pt) WCAG AA ✓ Pass

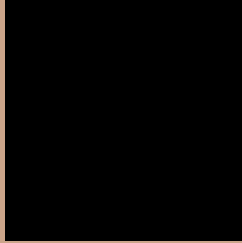
Any Text WCAG AA ✓ Pass

Large Text (above 18pt) WCAG AAA ✓ Pass

Any Text WCAG AAA ✓ Pass

If you want to check with other color combinations, try the [Color Contrast Checker](#).

Decimal 13346186 Background



This preview shows how black text looks on a background with the Decimal color 13346186.



This preview shows how white text looks on a background with the Decimal color 13346186.

Color Blindness Simulation

Color vision deficiency is a very complex topic, and I could not describe the different causes any better than Wikipedia does, so if you want to learn more, you should check out their [article about color blindness](#).

Dichromacy



Original Color
13346186

Protanopia
12037261

Deuteranopia
13215370



Tritanopia
13607085

Trichromacy



Original Color
13346186

Protanomaly
12495244

Deuteranomaly
13280906

Tritanomaly
13542048

Monochromacy



Original Color
13346186

Achromatopsia
11382189

Achromatomaly
12102304

CSS Examples

Text

The CSS property to change the color of the text to Decimal 13346186 is called "color". The color property can be set on classes, ids or directly on the HTML element.

This example shows how text in the color #CBA58A looks like.

```
.text, #text, p{  
    color:#CBA58A  
}
```

If you want to add a text shadow in that color use the text-shadow property, you can generate a text shadow directly with our [CSS Text Shadow Generator](#).

Here you see how black text with a 4 pixel #CBA58A colored shadow looks like.

```
.shadow{ text-shadow: 4px 4px 2px #CBA58A
}
```

Border

The CSS property to change the border of an element to Decimal 13346186 is called "border". The border property can be set on classes, ids or directly on the HTML element.

This example shows the color as border, it can be applied via the CSS property "border" or "border-color".

```
.border, #border, table{ border:4px solid
#CBA58A }
```

If only the border color should be changed use the property `border-color`.

```
.border{ border-color:#CBA58A }
```

If you want to add a box shadow in that color use:

Here you see how a box with a 4 pixel #CBA58A colored shadow looks like.

```
.boxshadow{ -moz-box-shadow:4px 4px 4px  
4px #CBA58A; -webkit-box-shadow:4px 4px  
4px 4px #CBA58A; box-shadow:4px 4px 4px  
4px #CBA58A }
```

Background

The CSS property to change the background color of an element to Decimal 13346186 is called "background". The background property can be set on classes, ids or directly on the HTML element.

```
.background, #background, body{  
background:#CBA58A }
```

If only the background color should be changed can be used:

```
.background{ background-color:#CBA58A }
```

This example shows the color as background, it is applied via the CSS property "background".

To optimize and compress your CSS code, you can use our [online CSS compressor and optimizer](#) based on csstidy. If you want to create a linear or radial gradient as background or border, check our [CSS Gradient Generator](#).

Hey! You found this booklet interesting? Support Converting Colors with the new Membership Option!

The pro membership hides all ads, plus gives you double the colors in the color bucket, and more awesome pro features!

[Learn more, Memberships starting at \\$2.50/m!](#)

**Follow me
on Twitter!**

@ConvertingColor