

Converting Colors

Decimal(13347739)

Have a look what the booklet for
Decimal(13347739) contains.

Decimal(13347739)	3
<i>Conversions</i>	4
<i>Details</i>	6
<i>Harmonies</i>	11
<i>Previews</i>	23
<i>Color Blindness Simulation</i>	26
<i>CSS Examples</i>	29

Color

Decimal(13347739)

Conversions

Conversions Part 1

Format	Color
Hex	CBAB9B
RGB	203, 171, 155
RGB Percent	80%, 67%, 61%
CMY	0.2039, 0.3294, 0.3922
CMYK	0.00, 0.16, 0.24, 0.20
HSL	20°, 32%, 70%
HSV	20°, 24%, 80%
XYZ	45.1079, 44.1889, 37.1622
YIQ	178.7440, 24.2080, 1.8080

Conversions

Conversions Part 2

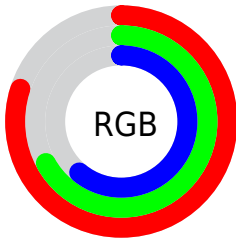
Format	Color
R_{YB}	203, 179, 155
Decimal	13347739
CIE _{Lab}	72.35, 9.17, 12.57
CIE _{LCh}	72, 15.557, 53.880
Yxy	44.1889, 0.3567, 0.3494
Android (android.graphics.Color)	4291537819 (0xFFCBAB9B)
YUV	178.7440, -11.7058, 21.2725
Hunter-Lab	66.4747, 4.7944, 13.3867

Details

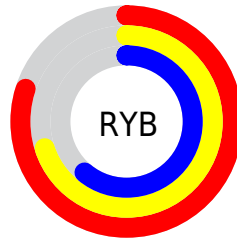
The Decimal color **13347739** is a light color, and the websafe version is hex **CC9999**. A complement of this color would be **10206155**, and the grayscale version is **11776947**.

A 20% lighter version of the original color is **16769745**, and **9729896** is the 20% darker color. If you saturate the color by 10%, you get **13344135**, and if you desaturate by 10%, it is **13351343**.

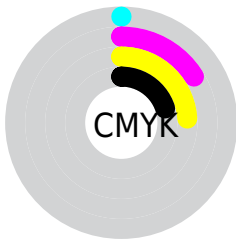
Distribution



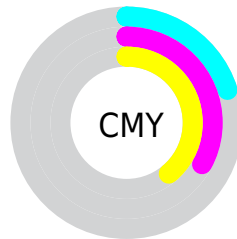
- Red (80%)
- Green (67%)
- Blue (61%)



- Red (80%)
- Yellow (70%)
- Blue (61%)



- Cyan (0%)
- Magenta (16%)
- Yellow (24%)
- Black (20%)



- Cyan (20%)
- Magenta (33%)
- Yellow (39%)

Brightness & Saturation Gradients

These gradients show how the Decimal color 13347739 changes by changing the brightness by 10 percent. The first figure shows a shift by +10% for each color and the second figure -10%.

Similar to the brightness gradients but the following saturation gradients show a change of the Decimal color 13347739 by changing the saturation by 10% instead.

 13347739

 13347739

16777215

 11505793

 16769745

 9729896

 16777198

 8019536

 6374969

 4730915

 3218190

 1769728

 0

 13347739

 13347739

 13344135

 13351343

 13340786

 13354692

 13337182

 13358296

 13333834

 13361644

 13330229

 13365247

 13326881

 13368575

 13323277

 13369343

 13321216

Harmonies

Analogous

The Analogous color harmony consists of three colors that are next to each other on the color wheel.



13674663



13347739



12627861

Triad

The Triadic color harmony groups three colors that are evenly spaced from another and form a triangle on the color wheel.



13347739



9681582



11579339

Complementary

The Complementary color scheme is a pair of colors which are on the opposite of each other on the color wheel.



13347739



10206155

Split Complementary

Split-complementary colors differ from the complementary color scheme. The scheme consists of three colors, the original color and two neighbors of the complement color.



10400973



13347739



9222844

Square

The Square scheme is like the rectangle color scheme, but the four colors are evenly spaced on the color wheel.



13347739



10533024



9549768



12692162

Rectangle

The Rectangle color scheme consists of four colors that form a rectangle on the color wheel.



13347739



11973526



9549768



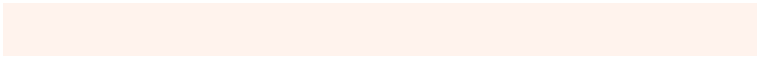
11186381

Sweetspot

The Sweet Spot groups the original color and five complimentary colors.



13347739



16774125



13343675



8419701



0



8421504

Same Dimension

The Same Dimension uses a secret algorithm to generate beautiful new colors.



13347739



16764856



13353883



6709084



10893056



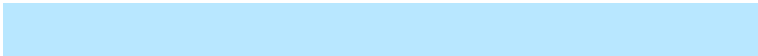
2493696

Inverse Universe

The Inverse Universe completely reimagines the original color for something new.



10206155



12118015



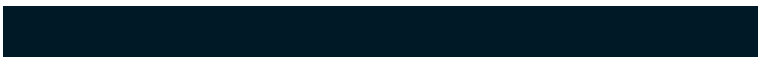
10200011



6054758



28326



6438

Previews

White Background



This preview shows how the Decimal color 13347739 looks on a white background.

Color Contrast Check

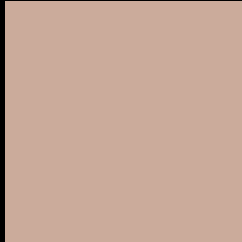
Large Text (above 18pt) WCAG AA × Fail

Any Text WCAG AA × Fail

Large Text (above 18pt) WCAG AAA × Fail

Any Text WCAG AAA × Fail

Black Background



This preview shows how the Decimal color 13347739 looks on a black background.

Color Contrast Check

Large Text (above 18pt) WCAG AA ✓ Pass

Any Text WCAG AA ✓ Pass

Large Text (above 18pt) WCAG AAA ✓ Pass

Any Text WCAG AAA ✓ Pass

If you want to check with other color combinations, try the [Color Contrast Checker](#).

Decimal 13347739 Background



This preview shows how black text looks on a background with the Decimal color 13347739.



This preview shows how white text looks on a background with the Decimal color 13347739.

Color Blindness Simulation

Color vision deficiency is a very complex topic, and I could not describe the different causes any better than Wikipedia does, so if you want to learn more, you should check out their [article about color blindness](#).


Dichromacy



Original Color
13347739

Protanopia
12169630

Deuteranopia
13347739



Tritanopia
13543348

Trichromacy



Original Color
13347739

Protanomaly
12627869

Deuteranomaly
13347739

Tritanomaly
13478059

Monochromacy



Original Color
13347739

Achromatopsia
11776947

Achromatomaly
12365994

CSS Examples

Text

The CSS property to change the color of the text to Decimal 13347739 is called "color". The color property can be set on classes, ids or directly on the HTML element.

This example shows how text in the color #CBAB9B looks like.

```
.text, #text, p{  
    color:#CBAB9B  
}
```

If you want to add a text shadow in that color use the text-shadow property, you can generate a text shadow directly with our [CSS Text Shadow Generator](#).

Here you see how black text with a 4 pixel #CBAB9B colored shadow looks like.

```
.shadow{ text-shadow: 4px 4px 2px #CBAB9B
}
```

Border

The CSS property to change the border of an element to Decimal 13347739 is called "border". The border property can be set on classes, ids or directly on the HTML element.

This example shows the color as border, it can be applied via the CSS property "border" or "border-color".

```
.border, #border, table{ border:4px solid
#CBAB9B }
```

If only the border color should be changed use the property `border-color`.

```
.border{ border-color:#CBAB9B }
```

If you want to add a box shadow in that color use:

Here you see how a box with a 4 pixel #CBAB9B colored shadow looks like.

```
.boxshadow{ -moz-box-shadow:4px 4px 4px  
4px #CBAB9B; -webkit-box-shadow:4px 4px  
4px 4px #CBAB9B; box-shadow:4px 4px 4px  
4px #CBAB9B }
```

Background

The CSS property to change the background color of an element to Decimal 13347739 is called "background". The background property can be set on classes, ids or directly on the HTML element.

```
.background, #background, body{  
background:#CBAB9B }
```

If only the background color should be changed can be used:

```
.background{ background-color:#CBAB9B }
```

This example shows the color as background, it is applied via the CSS property "background".

To optimize and compress your CSS code, you can use our [online CSS compressor and optimizer](#) based on csstidy. If you want to create a linear or radial gradient as background or border, check our [CSS Gradient Generator](#).

Hey! You found this booklet interesting? Support Converting Colors with the new Membership Option!

The pro membership hides all ads, plus gives you double the colors in the color bucket, and more awesome pro features!

[Learn more, Memberships starting at \\$2.50/m!](#)

**Follow me
on Twitter!**

@ConvertingColor