

Converting Colors

Decimal(13348778)

Have a look what the booklet for
Decimal(13348778) contains.

Decimal(13348778)	3
<i>Conversions</i>	4
<i>Details</i>	6
<i>Harmonies</i>	11
<i>Previews</i>	23
<i>Color Blindness Simulation</i>	26
<i>CSS Examples</i>	29

Color

Decimal(13348778)

Conversions

Conversions Part 1

Format	Color
Hex	CBAFAA
RGB	203, 175, 170
RGB Percent	80%, 69%, 67%
CMY	0.2039, 0.3137, 0.3333
CMYK	0.00, 0.14, 0.16, 0.20
HSL	9°, 24%, 73%
HSV	9°, 16%, 80%
XYZ	47.2143, 46.2587, 44.4706
YIQ	182.8020, 18.2930, 4.3810

Conversions

Conversions Part 2

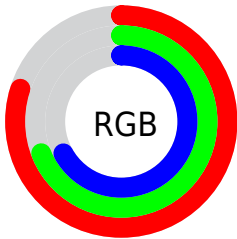
Format	Color
R _Y B	203, 176, 170
Decimal	13348778
CIE Lab	73.71, 9.29, 6.29
CIE LCh	74, 11.221, 34.088
Yxy	46.2587, 0.3423, 0.3353
Android (android.graphics.Color)	4291538858 (0xFFCBAFAA)
YUV	182.8020, -6.3114, 17.7136
Hunter-Lab	68.0138, 4.8883, 8.8431

Details

The Decimal color **13348778** is a light color, and the websafe version is hex **CC9999**. A complement of this color would be **11192011**, and the grayscale version is **12040119**.

A 20% lighter version of the original color is **16771041**, and **9796470** is the 20% darker color. If you saturate the color by 10%, you get **13344406**, and if you desaturate by 10%, it is **13353150**.

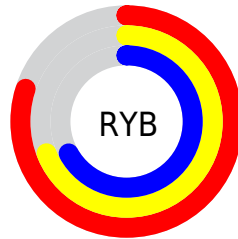
Distribution



Red (80%)

Green (69%)

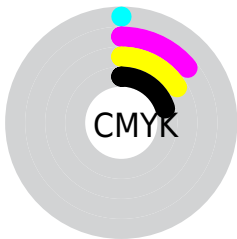
Blue (67%)



Red (80%)

Yellow (69%)

Blue (67%)

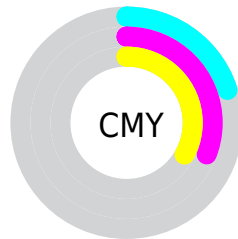


Cyan (0%)

Magenta (14%)

Yellow (16%)

Black (20%)



Cyan (20%)

Magenta (31%)

Yellow (33%)

Brightness & Saturation Gradients

These gradients show how the Decimal color 13348778 changes by changing the brightness by 10 percent. The first figure shows a shift by +10% for each color and the second figure -10%.

Similar to the brightness gradients but the following saturation gradients show a change of the Decimal color 13348778 by changing the saturation by 10% instead.

 13348778

 13348778

16777215

 11506832

 16771041

 9796470

16777214

 8020573

 6376006

 4797231

 3284507

 2033152

 0

 13348778

 13348778

 13344406

 13353150

 13340033

 13357523

 13335405

 13362151

 13331033

 13366523

 13326661

 13369343

 13322288

 13317660

 13313288

 13311744

Harmonies

Analogous

The Analogous color harmony consists of three colors that are next to each other on the color wheel.



13282996



13348778



13021603

Triad

The Triadic color harmony groups three colors that are evenly spaced from another and form a triangle on the color wheel.



13348778



10861228



11318729

Complementary

The Complementary color scheme is a pair of colors which are on the opposite of each other on the color wheel.



13348778



11192011

Split Complementary

Split-complementary colors differ from the complementary color scheme. The scheme consists of three colors, the original color and two neighbors of the complement color.



10598855



13348778



10337206

Square

The Square scheme is like the rectangle color scheme, but the four colors are evenly spaced on the color wheel.



13348778



11581604



10271680



12169926

Rectangle

The Rectangle color scheme consists of four colors that form a rectangle on the color wheel.



13348778



12629153



10271680



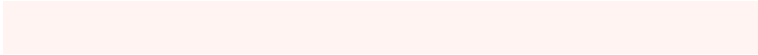
11057097

Sweetspot

The Sweet Spot groups the original color and five complimentary colors.



13348778



16774386



13347526



8419704



0



8421504

Same Dimension

The Same Dimension uses a secret algorithm to generate beautiful new colors.



13348778



16766156



13352874



6708572



10885376



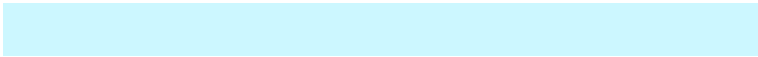
2491904

Inverse Universe

The Inverse Universe completely reimagines the original color for something new.



11192011



13432831



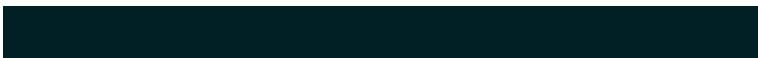
11187915



6055014



36262



8230

Previews

White Background



This preview shows how the Decimal color 13348778 looks on a white background.

Color Contrast Check

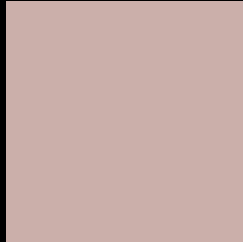
Large Text (above 18pt) WCAG AA × Fail

Any Text WCAG AA × Fail

Large Text (above 18pt) WCAG AAA × Fail

Any Text WCAG AAA × Fail

Black Background



This preview shows how the Decimal color 13348778 looks on a black background.

Color Contrast Check

Large Text (above 18pt) WCAG AA ✓ Pass

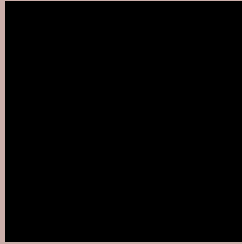
Any Text WCAG AA ✓ Pass

Large Text (above 18pt) WCAG AAA ✓ Pass

Any Text WCAG AAA ✓ Pass

If you want to check with other color combinations, try the [Color Contrast Checker](#).

Decimal 13348778 Background



This preview shows how black text looks on a background with the Decimal color 13348778.



This preview shows how white text looks on a background with the Decimal color 13348778.

Color Blindness Simulation

Color vision deficiency is a very complex topic, and I could not describe the different causes any better than Wikipedia does, so if you want to learn more, you should check out their [article about color blindness](#).

Dichromacy





Tritanopia
13479354

Trichromacy



Original Color
13348778

Protanomaly
12628908

Deuteranomaly
13348778

Tritanomaly
13414068

Monochromacy



Original Color
13348778

Achromatopsia
12040119

Achromatomaly
12498098

CSS Examples

Text

The CSS property to change the color of the text to Decimal 13348778 is called "color". The color property can be set on classes, ids or directly on the HTML element.

This example shows how text in the color #CBAFAA looks like.

```
.text, #text, p{  
  color:#CBAFAA  
}
```

If you want to add a text shadow in that color use the text-shadow property, you can generate a text shadow directly with our [CSS Text Shadow Generator](#).

Here you see how black text with a 4 pixel #CBAFAA colored shadow looks like.

```
.shadow{ text-shadow: 4px 4px 2px #CBAFAA
}
```

Border

The CSS property to change the border of an element to Decimal 13348778 is called "border". The border property can be set on classes, ids or directly on the HTML element.

This example shows the color as border, it can be applied via the CSS property "border" or "border-color".

```
.border, #border, table{ border:4px solid
#CBAFAA }
```

If only the border color should be changed use the property `border-color`.

```
.border{ border-color:#CBAFAA }
```

If you want to add a box shadow in that color use:

Here you see how a box with a 4 pixel #CBAFAA colored shadow looks like.

```
.boxshadow{ -moz-box-shadow:4px 4px 4px  
4px #CBAFAA; -webkit-box-shadow:4px 4px  
4px 4px #CBAFAA; box-shadow:4px 4px 4px  
4px #CBAFAA }
```

Background

The CSS property to change the background color of an element to Decimal 13348778 is called "background". The background property can be set on classes, ids or directly on the HTML element.

```
.background, #background, body{  
background:#CBAFAA }
```

If only the background color should be changed can be used:

```
.background{ background-color:#CBAFAA }
```

This example shows the color as background, it is applied via the CSS property "background".

To optimize and compress your CSS code, you can use our [online CSS compressor and optimizer](#) based on csstidy. If you want to create a linear or radial gradient as background or border, check our [CSS Gradient Generator](#).

Hey! You found this booklet interesting? Support Converting Colors with the new Membership Option!

The pro membership hides all ads, plus gives you double the colors in the color bucket, and more awesome pro features!

[Learn more, Memberships starting at \\$2.50/m!](#)

**Follow me
on Twitter!**

@ConvertingColor