

Converting Colors

Decimal(13349813)

Have a look what the booklet for
Decimal(13349813) contains.

Decimal(13349813)	3
<i>Conversions</i>	4
<i>Details</i>	6
<i>Harmonies</i>	11
<i>Previews</i>	23
<i>Color Blindness Simulation</i>	26
<i>CSS Examples</i>	29

Color

Decimal(13349813)

Conversions

Conversions Part 1

Format	Color
Hex	CBB3B5
RGB	203, 179, 181
RGB Percent	80%, 70%, 71%
CMY	0.2039, 0.2980, 0.2902
CMYK	0.00, 0.12, 0.11, 0.20
HSL	355°, 19%, 75%
HSV	355°, 12%, 80%
XYZ	49.0892, 48.2729, 50.4464
YIQ	186.4040, 13.6620, 5.7100

Conversions

Conversions Part 2

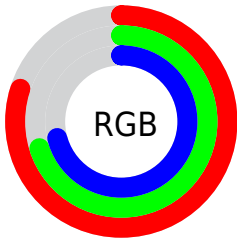
Format	Color
R _Y B	203, 179, 181
Decimal	13349813
CIE Lab	75.00, 8.93, 2.13
CIE LCh	75, 9.185, 13.427
Yxy	48.2729, 0.3321, 0.3266
Android (android.graphics.Color)	4291539893 (0xFFCBB3B5)
YUV	186.4040, -2.6642, 14.5547
Hunter-Lab	69.4787, 4.5289, 5.5864

Details

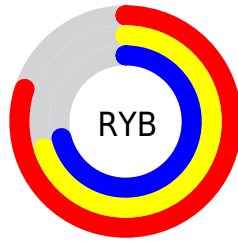
The Decimal color **13349813** is a light color, and the websafe version is hex **CCCCCC**. A complement of this color would be **11783113**, and the grayscale version is **12237498**.

A 20% lighter version of the original color is **16772077**, and **9797248** is the 20% darker color. If you saturate the color by 10%, you get **13344674**, and if you desaturate by 10%, it is **13354952**.

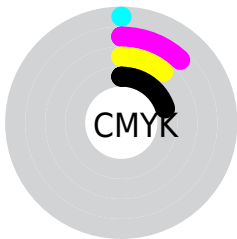
Distribution



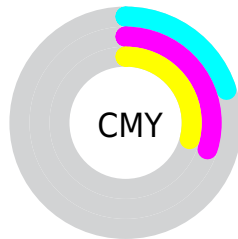
- Red (80%)
- Green (70%)
- Blue (71%)



- Red (80%)
- Yellow (70%)
- Blue (71%)



- Cyan (0%)
- Magenta (12%)
- Yellow (11%)
- Black (20%)



- Cyan (20%)
- Magenta (30%)
- Yellow (29%)

Brightness & Saturation Gradients

These gradients show how the Decimal color 13349813 changes by changing the brightness by 10 percent. The first figure shows a shift by +10% for each color and the second figure -10%.

Similar to the brightness gradients but the following saturation gradients show a change of the Decimal color 13349813 by changing the saturation by 10% instead.

 13349813

 13349813

16777215

 11507866

 16772077

 9797248

 8086887

 6442319

 4863544

 3350819

 2034445

 0

 13349813

 13349813

 13344674

 13354952

 13339280

 13360346

 13334141

 13365485

 13329003

 13369343

 13323864

 13318469

 13313331

 13308192

 13303825

Harmonies

Analogous

The Analogous color harmony consists of three colors that are next to each other on the color wheel.



13087678



13349813



13284525

Triad

The Triadic color harmony groups three colors that are evenly spaced from another and form a triangle on the color wheel.



13349813



11713708



11254729

Complementary

The Complementary color scheme is a pair of colors which are on the opposite of each other on the color wheel.



13349813



11783113

Split Complementary

Split-complementary colors differ from the complementary color scheme. The scheme consists of three colors, the original color and two neighbors of the complement color.



10862020



13349813



11124148

Square

The Square scheme is like the rectangle color scheme, but the four colors are evenly spaced on the color wheel.



13349813



12368296



10796732



11909321

Rectangle

The Rectangle color scheme consists of four colors that form a rectangle on the color wheel.



13349813



13088426



10796732



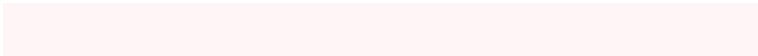
11058375

Sweetspot

The Sweet Spot groups the original color and five complimentary colors.



13349813



16774646



13218763



8419706



0



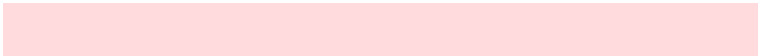
8421504

Same Dimension

The Same Dimension uses a secret algorithm to generate beautiful new colors.



13349813



16767966



13352371



6708317



10878990



2490371

Inverse Universe

The Inverse Universe completely reimagines the original color for something new.



13349813



16767966



11780555



6708317



10878990



2490371

Previews

White Background



This preview shows how the Decimal color 13349813 looks on a white background.

Color Contrast Check

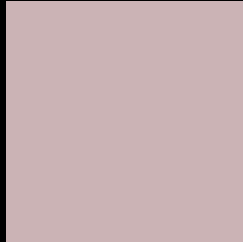
Large Text (above 18pt) WCAG AA × Fail

Any Text WCAG AA × Fail

Large Text (above 18pt) WCAG AAA × Fail

Any Text WCAG AAA × Fail

Black Background



This preview shows how the Decimal color 13349813 looks on a black background.

Color Contrast Check

Large Text (above 18pt) WCAG AA ✓ Pass

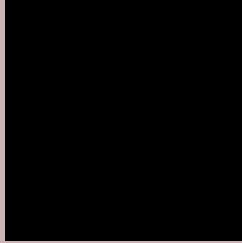
Any Text WCAG AA ✓ Pass

Large Text (above 18pt) WCAG AAA ✓ Pass

Any Text WCAG AAA ✓ Pass

If you want to check with other color combinations, try the [Color Contrast Checker](#).

Decimal 13349813 Background



This preview shows how black text looks on a background with the Decimal color 13349813.



This preview shows how white text looks on a background with the Decimal color 13349813.

Color Blindness Simulation

Color vision deficiency is a very complex topic, and I could not describe the different causes any better than Wikipedia does, so if you want to learn more, you should check out their [article about color blindness](#).

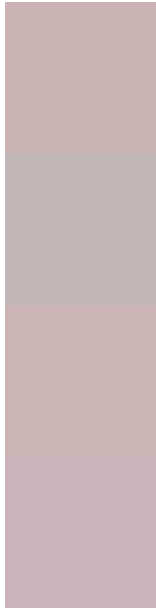
Dichromacy





Tritanopia
13414847

Trichromacy



Original Color
13349813

Protanomaly
12695223

Deuteranomaly
13415349

Tritanomaly
13415099

Monochromacy



Original Color
13349813

Achromatopsia
12237498

Achromatomaly
12629944

CSS Examples

Text

The CSS property to change the color of the text to Decimal 13349813 is called "color". The color property can be set on classes, ids or directly on the HTML element.

This example shows how text in the color #CBB3B5 looks like.

```
.text, #text, p{  
    color:#CBB3B5  
}
```

If you want to add a text shadow in that color use the text-shadow property, you can generate a text shadow directly with our [CSS Text Shadow Generator](#).

Here you see how black text with a 4 pixel #CBB3B5 colored shadow looks like.

```
.shadow{ text-shadow: 4px 4px 2px #CBB3B5
}
```

Border

The CSS property to change the border of an element to Decimal 13349813 is called "border". The border property can be set on classes, ids or directly on the HTML element.

This example shows the color as border, it can be applied via the CSS property "border" or "border-color".

```
.border, #border, table{ border:4px solid
#CBB3B5 }
```

If only the border color should be changed use the property `border-color`.

```
.border{ border-color:#CBB3B5 }
```

If you want to add a box shadow in that color use:

Here you see how a box with a 4 pixel #CBB3B5 colored shadow looks like.

```
.boxshadow{ -moz-box-shadow:4px 4px 4px  
4px #CBB3B5; -webkit-box-shadow:4px 4px  
4px 4px #CBB3B5; box-shadow:4px 4px 4px  
4px #CBB3B5 }
```

Background

The CSS property to change the background color of an element to Decimal 13349813 is called "background". The background property can be set on classes, ids or directly on the HTML element.

```
.background, #background, body{  
background:#CBB3B5 }
```

If only the background color should be changed can be used:

```
.background{ background-color:#CBB3B5 }
```

This example shows the color as background, it is applied via the CSS property "background".

To optimize and compress your CSS code, you can use our [online CSS compressor and optimizer](#) based on csstidy. If you want to create a linear or radial gradient as background or border, check our [CSS Gradient Generator](#).

Hey! You found this booklet interesting? Support Converting Colors with the new Membership Option!

The pro membership hides all ads, plus gives you double the colors in the color bucket, and more awesome pro features!

[Learn more, Memberships starting at \\$2.50/m!](#)

**Follow me
on Twitter!**

@ConvertingColor