

# Converting Colors

Decimal(13350579)

Have a look what the booklet for  
Decimal(13350579) contains.

<b>Decimal(13350579)</b> .....	3
<i><b>Conversions</b></i> .....	4
<i><b>Details</b></i> .....	6
<i><b>Harmonies</b></i> .....	11
<i><b>Previews</b></i> .....	23
<i><b>Color Blindness Simulation</b></i> .....	26
<i><b>CSS Examples</b></i> .....	29

# **Color**

**Decimal(13350579)**

# Conversions

## Conversions Part 1

Format	Color
Hex	CBB6B3
RGB	203, 182, 179
RGB Percent	80%, 71%, 70%
CMY	0.2039, 0.2863, 0.2980
CMYK	0.00, 0.10, 0.12, 0.20
HSL	8°, 19%, 75%
HSV	8°, 12%, 80%
XYZ	49.4932, 49.4071, 49.5758
YIQ	187.9370, 13.4790, 3.5190

# Conversions

## Conversions Part 2

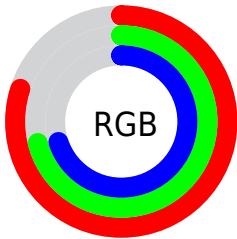
<b>Format</b>	<b>Color</b>
R <sub>YB</sub>	203, 182, 179
Decimal	13350579
CIE Lab	75.70, 6.98, 4.25
CIE LCh	76, 8.174, 31.308
Yxy	49.4071, 0.3333, 0.3328
Android (android.graphics.Color)	4291540659 (0xFFCBB6B3)
YUV	187.9370, -4.4059, 13.2103
Hunter-Lab	70.2902, 2.6789, 7.3858

# Details

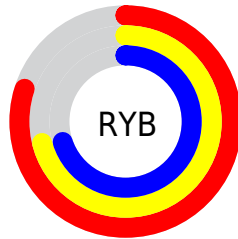
The Decimal color **13350579** is a light color, and the websafe version is hex **CCCCCC**. A complement of this color would be **11782347**, and the grayscale version is **12369084**.

A 20% lighter version of the original color is **16772843**, and **9798014** is the 20% darker color. If you saturate the color by 10%, you get **13345951**, and if you desaturate by 10%, it is **13355207**.

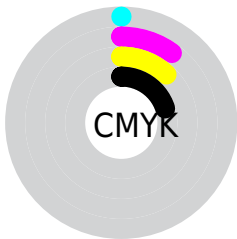
# Distribution



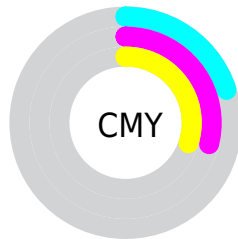
- Red (80%)
- Green (71%)
- Blue (70%)



- Red (80%)
- Yellow (71%)
- Blue (70%)



- Cyan (0%)
- Magenta (10%)
- Yellow (12%)
- Black (20%)



- Cyan (20%)
- Magenta (29%)
- Yellow (30%)

# Brightness & Saturation Gradients

These gradients show how the Decimal color 13350579 changes by changing the brightness by 10 percent. The first figure shows a shift by +10% for each color and the second figure -10%.

Similar to the brightness gradients but the following saturation gradients show a change of the Decimal color 13350579 by changing the saturation by 10% instead.



 13350579

 13350579

16777215

 11508632

 16772843

 9798014

 8087653

 6443085

 4864311

 3351329

 1969675

 0

 13350579

 13350579

 13345951

 13355207

 13341322

 13359836

 13336950

 13364208

 13332322

 13368831


 13327694

 13369343

 13323065

 13318693

 13314065

 13310208

# Harmonies

## Analogous

The Analogous color harmony consists of three colors that are next to each other on the color wheel.



13285050



13350579



13154478

# Triad

The Triadic color harmony groups three colors that are evenly spaced from another and form a triangle on the color wheel.



13350579



11583155



11779017

# Complementary

The Complementary color scheme is a pair of colors which are on the opposite of each other on the color wheel.



13350579



11782347

# Split Complementary

Split-complementary colors differ from the complementary color scheme. The scheme consists of three colors, the original color and two neighbors of the complement color.



11320775



13350579



11190203

# Square

The Square scheme is like the rectangle color scheme, but the four colors are evenly spaced on the color wheel.



13350579



12106926



11059138



12433863

# Rectangle

The Rectangle color scheme consists of four colors that form a rectangle on the color wheel.



13350579



12827052



11059138



11582665



# Sweetspot

The Sweet Spot groups the original color and five complimentary colors.



13350579



16774901



13349832



8419961



0



8421504

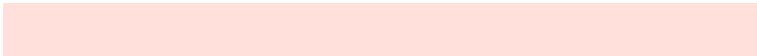


# Same Dimension

The Same Dimension uses a secret algorithm to generate beautiful new colors.



13350579



16769243



13353651



6708572



10884352



2491648



# Inverse Universe

The Inverse Universe completely reimagines the original color for something new.



11782347



14416895



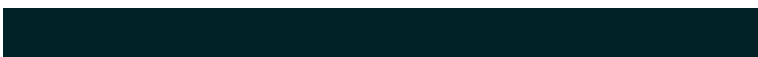
11779275



6055270



37286

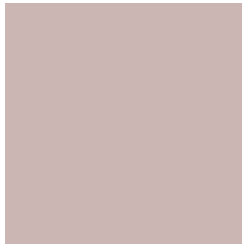


8486



# Previews

## White Background



This preview shows how the Decimal color 13350579 looks on a white background.

## Color Contrast Check

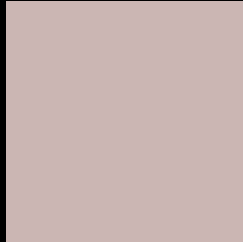
Large Text (above 18pt) WCAG AA × Fail

Any Text WCAG AA × Fail

Large Text (above 18pt) WCAG AAA × Fail

Any Text WCAG AAA × Fail

# Black Background



This preview shows how the Decimal color 13350579 looks on a black background.

## Color Contrast Check

Large Text (above 18pt) WCAG AA ✓ Pass

Any Text WCAG AA ✓ Pass

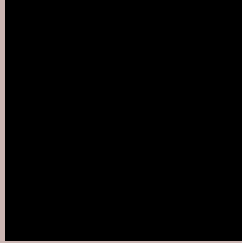
Large Text (above 18pt) WCAG AAA ✓ Pass

Any Text WCAG AAA ✓ Pass

If you want to check with other color combinations, try the [Color Contrast Checker](#).



## Decimal 13350579 Background



This preview shows how black text looks on a background with the Decimal color 13350579.



This preview shows how white text looks on a background with the Decimal color 13350579.

# Color Blindness Simulation

Color vision deficiency is a very complex topic, and I could not describe the different causes any better than Wikipedia does, so if you want to learn more, you should check out their [article about color blindness](#).


## Dichromacy



**Original Color**  
13350579

**Protanopia**  
12565173

**Deuteranopia**  
13612211



**Tritanopia**  
13481154

# Trichromacy



**Original Color**  
13350579

**Protanomaly**  
12827060

**Deuteranomaly**  
13546931

**Tritanomaly**  
13415869

# Monochromacy



**Original Color**  
13350579

**Achromatopsia**  
12369084

**Achromatomaly**  
12696249

# CSS Examples

## Text

The CSS property to change the color of the text to Decimal 13350579 is called "color". The color property can be set on classes, ids or directly on the HTML element.

This example shows how text in the color #CBB6B3 looks like.

```
.text, #text, p{  
    color:#CBB6B3  
}
```

If you want to add a text shadow in that color use the text-shadow property, you can generate a text shadow directly with our [CSS Text Shadow Generator](#).

Here you see how black text with a 4 pixel #CBB6B3 colored shadow looks like.

```
.shadow{ text-shadow: 4px 4px 2px #CBB6B3
}
```

## Border

The CSS property to change the border of an element to Decimal 13350579 is called "border". The border property can be set on classes, ids or directly on the HTML element.

This example shows the color as border, it can be applied via the CSS property "border" or "border-color".

```
.border, #border, table{ border:4px solid
#CBB6B3 }
```

If only the border color should be changed use the property border-color.

```
.border{ border-color:#CBB6B3 }
```

If you want to add a box shadow in that color use:

Here you see how a box with a 4 pixel #CBB6B3 colored shadow looks like.

```
.boxshadow{ -moz-box-shadow:4px 4px 4px  
4px #CBB6B3; -webkit-box-shadow:4px 4px  
4px 4px #CBB6B3; box-shadow:4px 4px 4px  
4px #CBB6B3 }
```

# Background

The CSS property to change the background color of an element to Decimal 13350579 is called "background". The background property can be set on classes, ids or directly on the HTML element.

```
.background, #background, body{  
background:#CBB6B3 }
```

If only the background color should be changed can be used:

```
.background{ background-color:#CBB6B3 }
```

This example shows the color as background, it is applied via the CSS property "background".

To optimize and compress your CSS code, you can use our [online CSS compressor and optimizer](#) based on csstidy. If you want to create a linear or radial gradient as background or border, check our [CSS Gradient Generator](#).



Hey! You found this booklet interesting? Support Converting Colors with the new Membership Option!

The pro membership hides all ads, plus gives you double the colors in the color bucket, and more awesome pro features!

**[Learn more, Memberships starting at \\$2.50/m!](#)**

**Follow me  
on Twitter!**

@ConvertingColor