

Converting Colors

Decimal(13351093)

Have a look what the booklet for
Decimal(13351093) contains.

Decimal(13351093)	3
<i>Conversions</i>	4
<i>Details</i>	6
<i>Harmonies</i>	11
<i>Previews</i>	23
<i>Color Blindness Simulation</i>	26
<i>CSS Examples</i>	29

Color

Decimal(13351093)

Conversions

Conversions Part 1

Format	Color
Hex	CBB8B5
RGB	203, 184, 181
RGB Percent	80%, 72%, 71%
CMY	0.2039, 0.2784, 0.2902
CMYK	0.00, 0.09, 0.11, 0.20
HSL	8°, 17%, 75%
HSV	8°, 11%, 80%
XYZ	50.1096, 50.3137, 50.7865
YIQ	189.3390, 12.2870, 3.0950

Conversions

Conversions Part 2

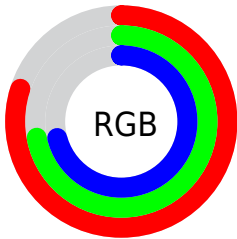
Format	Color
R _Y B	203, 184, 181
Decimal	13351093
CIE Lab	76.26, 6.24, 3.97
CIE LCh	76, 7.397, 32.426
Yxy	50.3137, 0.3314, 0.3327
Android (android.graphics.Color)	4291541173 (0xFFCBB8B5)
YUV	189.3390, -4.1111, 11.9807
Hunter-Lab	70.9321, 1.9690, 7.2016

Details

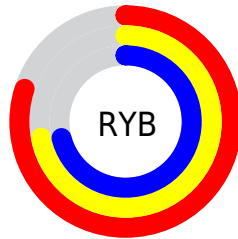
The Decimal color **13351093** is a light color, and the websafe version is hex **CCCCCC**. A complement of this color would be **11913419**, and the grayscale version is **12434877**.

A 20% lighter version of the original color is **16773357**, and **9798528** is the 20% darker color. If you saturate the color by 10%, you get **13346465**, and if you desaturate by 10%, it is **13355721**.

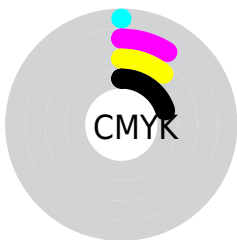
Distribution



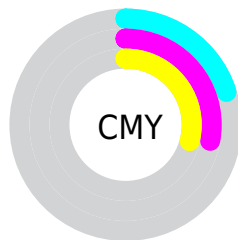
- Red (80%)
- Green (72%)
- Blue (71%)



- Red (80%)
- Yellow (72%)
- Blue (71%)



- Cyan (0%)
- Magenta (9%)
- Yellow (11%)
- Black (20%)



- Cyan (20%)
- Magenta (28%)
- Yellow (29%)

Brightness & Saturation Gradients

These gradients show how the Decimal color 13351093 changes by changing the brightness by 10 percent. The first figure shows a shift by +10% for each color and the second figure -10%.

Similar to the brightness gradients but the following saturation gradients show a change of the Decimal color 13351093 by changing the saturation by 10% instead.

■ 13351093

■ 13351093

16777215

■ 11574682

■ 16773357

■ 9798528

■ 8088167

■ 6443599

■ 4864824

■ 3351843

■ 1970189

■ 0

■ 13351093

■ 13351093

 13346465

 13355721

 13342092

 13360094

 13337464

 13364722

 13333092

 13369087

 13328464

 13369343

 13324091

 13319463

 13315091

 13310976

Harmonies

Analogous

The Analogous color harmony consists of three colors that are next to each other on the color wheel.



13285564



13351093



13154992

Triad

The Triadic color harmony groups three colors that are evenly spaced from another and form a triangle on the color wheel.



13351093



11714742



11975882

Complementary

The Complementary color scheme is a pair of colors which are on the opposite of each other on the color wheel.



13351093



11913419

Split Complementary

Split-complementary colors differ from the complementary color scheme. The scheme consists of three colors, the original color and two neighbors of the complement color.



11517896



13351093



11387068

Square

The Square scheme is like the rectangle color scheme, but the four colors are evenly spaced on the color wheel.



13351093



12238512



11321539



12499656

Rectangle

The Rectangle color scheme consists of four colors that form a rectangle on the color wheel.



13351093



12893103



11321539



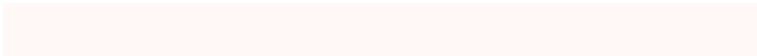
11779529

Sweetspot

The Sweet Spot groups the original color and five complimentary colors.



13351093



16775415



13350344



8420218



0



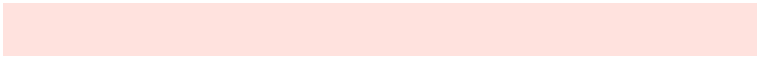
8421504

Same Dimension

The Same Dimension uses a secret algorithm to generate beautiful new colors.



13351093



16769758



13353909



6708572



10884864



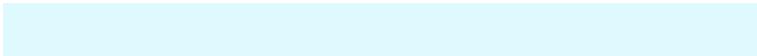
2491648

Inverse Universe

The Inverse Universe completely reimagines the original color for something new.



11913419



14613247



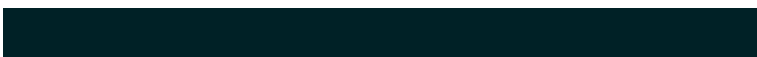
11910603



6055270



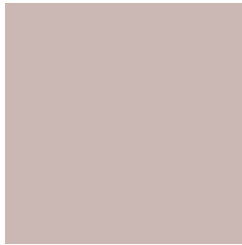
36774



8486

Previews

White Background



This preview shows how the Decimal color 13351093 looks on a white background.

Color Contrast Check

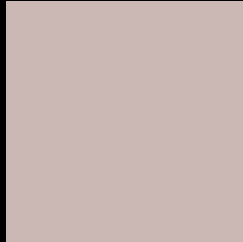
Large Text (above 18pt) WCAG AA × Fail

Any Text WCAG AA × Fail

Large Text (above 18pt) WCAG AAA × Fail

Any Text WCAG AAA × Fail

Black Background



This preview shows how the Decimal color 13351093 looks on a black background.

Color Contrast Check

Large Text (above 18pt) WCAG AA ✓ Pass

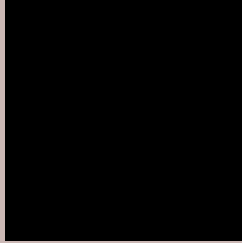
Any Text WCAG AA ✓ Pass

Large Text (above 18pt) WCAG AAA ✓ Pass

Any Text WCAG AAA ✓ Pass

If you want to check with other color combinations, try the [Color Contrast Checker](#).

Decimal 13351093 Background



This preview shows how black text looks on a background with the Decimal color 13351093.




This preview shows how white text looks on a background with the Decimal color 13351093.

Color Blindness Simulation

Color vision deficiency is a very complex topic, and I could not describe the different causes any better than Wikipedia does, so if you want to learn more, you should check out their [article about color blindness](#).

Dichromacy

	Original Color 13351093
	Protanopia 12696503
	Deuteranopia 13743797



Tritanopia
13481668

Trichromacy



Original Color
13351093

Protanomaly
12958390

Deuteranomaly
13612981

Tritanomaly
13416383

Monochromacy



Original Color
13351093

Achromatopsia
12434877

Achromatomaly
12762042

CSS Examples

Text

The CSS property to change the color of the text to Decimal 13351093 is called "color". The color property can be set on classes, ids or directly on the HTML element.

This example shows how text in the color #CBB8B5 looks like.

```
.text, #text, p{  
  color:#CBB8B5  
}
```

If you want to add a text shadow in that color use the text-shadow property, you can generate a text shadow directly with our [CSS Text Shadow Generator](#).

Here you see how black text with a 4 pixel #CBB8B5 colored shadow looks like.

```
.shadow{ text-shadow: 4px 4px 2px #CBB8B5  
}
```

Border

The CSS property to change the border of an element to Decimal 13351093 is called "border". The border property can be set on classes, ids or directly on the HTML element.

This example shows the color as border, it can be applied via the CSS property "border" or "border-color".

```
.border, #border, table{ border:4px solid  
#CBB8B5 }
```

If only the border color should be changed use the property `border-color`.

```
.border{ border-color:#CBB8B5 }
```

If you want to add a box shadow in that color use:

Here you see how a box with a 4 pixel #CBB8B5 colored shadow looks like.

```
.boxshadow{ -moz-box-shadow:4px 4px 4px  
4px #CBB8B5; -webkit-box-shadow:4px 4px  
4px 4px #CBB8B5; box-shadow:4px 4px 4px  
4px #CBB8B5 }
```

Background

The CSS property to change the background color of an element to Decimal 13351093 is called "background". The background property can be set on classes, ids or directly on the HTML element.

```
.background, #background, body{  
background:#CBB8B5 }
```

If only the background color should be changed can be used:

```
.background{ background-color:#CBB8B5 }
```

This example shows the color as background, it is applied via the CSS property "background".

To optimize and compress your CSS code, you can use our [online CSS compressor and optimizer](#) based on csstidy. If you want to create a linear or radial gradient as background or border, check our [CSS Gradient Generator](#).

Hey! You found this booklet interesting? Support Converting Colors with the new Membership Option!

The pro membership hides all ads, plus gives you double the colors in the color bucket, and more awesome pro features!

[Learn more, Memberships starting at \\$2.50/m!](#)

**Follow me
on Twitter!**

@ConvertingColor