

# Converting Colors

Decimal(13387639)

Have a look what the booklet for  
Decimal(13387639) contains.

<b>Decimal(13387639)</b> .....	3
<i><b>Conversions</b></i> .....	4
<i><b>Details</b></i> .....	6
<i><b>Harmonies</b></i> .....	11
<i><b>Previews</b></i> .....	23
<i><b>Color Blindness Simulation</b></i> .....	26
<i><b>CSS Examples</b></i> .....	29

**Color**

**Decimal(13387639)**

# Conversions

## Conversions Part 1

<b>Format</b>	<b>Color</b>
Hex	CC4777
RGB	204, 71, 119
RGB Percent	80%, 28%, 47%
CMY	0.2000, 0.7216, 0.5333
CMYK	0.00, 0.65, 0.42, 0.20
HSL	338°, 57%, 54%
HSV	338°, 65%, 80%
XYZ	30.4849, 18.6758, 19.4508
YIQ	116.2390, 63.8600, 43.1240

# Conversions

## Conversions Part 2

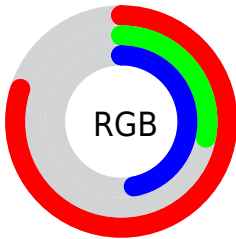
<b>Format</b>	<b>Color</b>
<b>R<sub>YB</sub></b>	204, 71, 119
Decimal	13387639
CIE <sub>Lab</sub>	50.31, 56.46, 1.68
CIE <sub>LCh</sub>	50, 56.481, 1.706
Yxy	18.6758, 0.4443, 0.2722
Android (android.graphics.Color)	4291577719 (0xFFCC4777)
YUV	116.2390, 1.3612, 76.9664
Hunter-Lab	43.2155, 50.2896, 3.5650

# Details

The Decimal color **13387639** is a dark color, and the websafe version is hex **CC3366**. The color can be described as dark muted rose. A complement of this color would be **4705436**, and the grayscale version is **7631988**.

A 20% lighter version of the original color is **16744363**, and **9502791** is the 20% darker color. If you saturate the color by 10%, you get **13382506**, and if you desaturate by 10%, it is **13392772**.

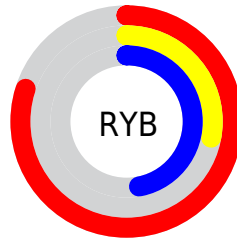
# Distribution



Red (80%)

Green (28%)

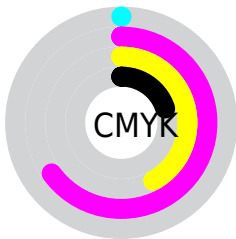
Blue (47%)



Red (80%)

Yellow (28%)

Blue (47%)

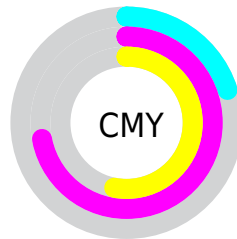


Cyan (0%)

Magenta (65%)

Yellow (42%)

Black (20%)



Cyan (20%)

Magenta (72%)

Yellow (53%)

# Brightness & Saturation Gradients

These gradients show how the Decimal color 13387639 changes by changing the brightness by 10 percent. The first figure shows a shift by +10% for each color and the second figure -10%.

Similar to the brightness gradients but the following saturation gradients show a change of the Decimal color 13387639 by changing the saturation by 10% instead.



 13387639

 13387639

16777215

 11413854

 16744363

 9502791

 16751558

 7602225

 16758754

 5767196

 16766207

 4128771

 16773631

 1835009

 0

 13387639

 13387639

 13382506

 13392772

 13377117

 13398161

 13371984

 13403294

 13369418

 13408683

 13413816

 13418949

 13424338

 13429471

 13434860

# Harmonies

## Analogous

The Analogous color harmony consists of three colors that are next to each other on the color wheel.



11752614



13387639



13258824

# Triad

The Triadic color harmony groups three colors that are evenly spaced from another and form a triangle on the color wheel.



13387639



6062875



35020

# Complementary

The Complementary color scheme is a pair of colors which are on the opposite of each other on the color wheel.



13387639



4705436

# Split Complementary

Split-complementary colors differ from the complementary color scheme. The scheme consists of three colors, the original color and two neighbors of the complement color.



36265



13387639



35656

# Square

The Square scheme is like the rectangle color scheme, but the four colors are evenly spaced on the color wheel.



13387639



9270784



36473



32216

# Rectangle

The Rectangle color scheme consists of four colors that form a rectangle on the color wheel.



13387639



12344620



36473



35779



# Sweetspot

The Sweet Spot groups the original color and five complimentary colors.



13387639



16764126



10176460



8413548



0



8421504



# Same Dimension

The Same Dimension uses a secret algorithm to generate beautiful new colors.



13387639



16726144



13392199



6708319



10879036



2490382



# Inverse Universe

The Inverse Universe completely reimagines the original color for something new.



13387639



16726144



4700876



6708319



10879036



2490382



# Previews

## White Background



This preview shows how the Decimal color 13387639 looks on a white background.

## Color Contrast Check

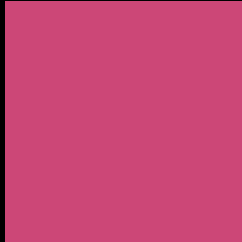
Large Text (above 18pt) WCAG AA ✓ Pass

Any Text WCAG AA × Fail

Large Text (above 18pt) WCAG AAA × Fail

Any Text WCAG AAA × Fail

# Black Background



This preview shows how the Decimal color 13387639 looks on a black background.

## Color Contrast Check

Large Text (above 18pt) WCAG AA ✓ Pass

Any Text WCAG AA ✓ Pass

Large Text (above 18pt) WCAG AAA ✓ Pass

Any Text WCAG AAA × Fail

If you want to check with other color combinations, try the [Color Contrast Checker](#).



## Decimal 13387639 Background



This preview shows how black text looks on a background with the Decimal color 13387639.



This preview shows how white text looks on a background with the Decimal color 13387639.

# Color Blindness Simulation

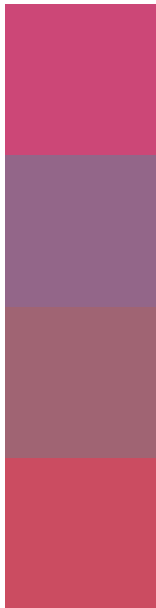
Color vision deficiency is a very complex topic, and I could not describe the different causes any better than Wikipedia does, so if you want to learn more, you should check out their [article about color blindness](#).

## Dichromacy





# Trichromacy



**Original Color**  
13387639

**Protanomaly**  
9660041

**Deuteranomaly**  
10511475

**Tritanomaly**  
13323361

# Monochromacy



**Original Color**  
13387639

**Achromatopsia**  
7631988

**Achromatomaly**  
9725045

# CSS Examples

## Text

The CSS property to change the color of the text to Decimal 13387639 is called "color". The color property can be set on classes, ids or directly on the HTML element.

This example shows how text in the color #CC4777 looks like.

```
.text, #text, p{  
    color:#CC4777  
}
```

If you want to add a text shadow in that color use the text-shadow property, you can generate a text shadow directly with our [CSS Text Shadow Generator](#).

Here you see how black text with a 4 pixel #CC4777 colored shadow looks like.

```
.shadow{ text-shadow: 4px 4px 2px #CC4777
}
```

## Border

The CSS property to change the border of an element to Decimal 13387639 is called "border". The border property can be set on classes, ids or directly on the HTML element.

This example shows the color as border, it can be applied via the CSS property "border" or "border-color".

```
.border, #border, table{ border:4px solid
#CC4777 }
```

If only the border color should be changed use the property border-color.

```
.border{ border-color:#CC4777 }
```

If you want to add a box shadow in that color use:

Here you see how a box with a 4 pixel #CC4777 colored shadow looks like.

```
.boxshadow{ -moz-box-shadow:4px 4px 4px  
4px #CC4777; -webkit-box-shadow:4px 4px  
4px 4px #CC4777; box-shadow:4px 4px 4px  
4px #CC4777 }
```

# Background

The CSS property to change the background color of an element to Decimal 13387639 is called "background". The background property can be set on classes, ids or directly on the HTML element.

```
.background, #background, body{  
background:#CC4777 }
```

If only the background color should be changed can be used:

```
.background{ background-color:#CC4777 }
```

This example shows the color as background, it is applied via the CSS property "background".

To optimize and compress your CSS code, you can use our [online CSS compressor and optimizer](#) based on csstidy. If you want to create a linear or radial gradient as background or border, check our [CSS Gradient Generator](#).



Hey! You found this booklet interesting? Support Converting Colors with the new Membership Option!

The pro membership hides all ads, plus gives you double the colors in the color bucket, and more awesome pro features!

**[Learn more, Memberships starting at \\$2.50/m!](#)**

**Follow me  
on Twitter!**

@ConvertingColor