

Converting Colors

Decimal(13396346)

Have a look what the booklet for
Decimal(13396346) contains.

Decimal(13396346)	3
<i>Conversions</i>	4
<i>Details</i>	6
<i>Harmonies</i>	11
<i>Previews</i>	23
<i>Color Blindness Simulation</i>	26
<i>CSS Examples</i>	29

Color

Decimal(13396346)

Conversions

Conversions Part 1

Format	Color
Hex	CC697A
RGB	204, 105, 122
RGB Percent	80%, 41%, 48%
CMY	0.2000, 0.5882, 0.5216
CMYK	0.00, 0.49, 0.40, 0.20
HSL	350°, 49%, 61%
HSV	350°, 49%, 80%
XYZ	33.4663, 24.3457, 21.3477
YIQ	136.5390, 53.5470, 26.2750

Conversions

Conversions Part 2

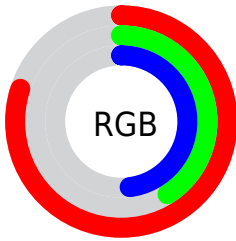
Format	Color
RYB	204, 105, 122
Decimal	13396346
CIELab	56.43, 40.86, 8.70
CIElCh	56, 41.776, 12.014
Yxy	24.3457, 0.4228, 0.3076
Android (android.graphics.Color)	4291586426 (0xFFCC697A)
YUV	136.5390, -7.1677, 59.1633
Hunter-Lab	49.3413, 34.7222, 8.8869

Details

The Decimal color **13396346** is a dark color, and the websafe version is hex **CC6666**. A complement of this color would be **6933691**, and the grayscale version is **9013641**.

A 20% lighter version of the original color is **16752302**, and **9582154** is the 20% darker color. If you saturate the color by 10%, you get **13391209**, and if you desaturate by 10%, it is **13401483**.

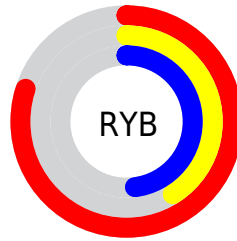
Distribution



Red (80%)

Green (41%)

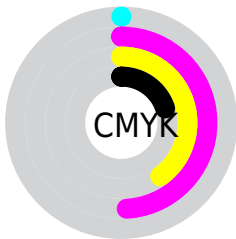
Blue (48%)



Red (80%)

Yellow (41%)

Blue (48%)

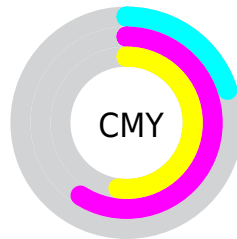


Cyan (0%)

Magenta (49%)

Yellow (40%)

Black (20%)



Cyan (20%)

Magenta (59%)

Yellow (52%)

Brightness & Saturation Gradients

These gradients show how the Decimal color 13396346 changes by changing the brightness by 10 percent. The first figure shows a shift by +10% for each color and the second figure -10%.

Similar to the brightness gradients but the following saturation gradients show a change of the Decimal color 13396346 by changing the saturation by 10% instead.

 13396346

 13396346

16777215

 11489121

 16752302

 9582154

 16759498

 7740211

 16766694

 5963806

 16774143

 4259845

 2555905

 0

 13396346

 13396346

 13391209

 13401483

 13385816

 13406876

 13380679

 13412013

 13375286

 13417406

 13370150

 13422542

 13369379

 13427679

 13433072

 13434879

Harmonies

Analogous

The Analogous color harmony consists of three colors that are next to each other on the color wheel.



12545183



13396346



12939608

Triad

The Triadic color harmony groups three colors that are evenly spaced from another and form a triangle on the color wheel.



13396346



6787919



37324

Complementary

The Complementary color scheme is a pair of colors which are on the opposite of each other on the color wheel.



13396346



6933691

Split Complementary

Split-complementary colors differ from the complementary color scheme. The scheme consists of three colors, the original color and two neighbors of the complement color.



39095



13396346



3119216

Square

The Square scheme is like the rectangle color scheme, but the four colors are evenly spaced on the color wheel.



13396346



9407038



39573



6653646

Rectangle

The Rectangle color scheme consists of four colors that form a rectangle on the color wheel.



13396346



12089671



39573



38087

Sweetspot

The Sweet Spot groups the original color and five complimentary colors.



13396346



16767455



12216780



8415596



0



8421504

Same Dimension

The Same Dimension uses a secret algorithm to generate beautiful new colors.



13396346



16739204



13404265



6708318



10879004



2490375

Inverse Universe

The Inverse Universe completely reimagines the original color for something new.



13396346



16739204



6925772



6708318



10879004



2490375

Previews

White Background



This preview shows how the Decimal color 13396346 looks on a white background.

Color Contrast Check

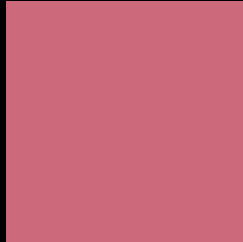
Large Text (above 18pt) WCAG AA ✓ Pass

Any Text WCAG AA ✗ Fail

Large Text (above 18pt) WCAG AAA ✗ Fail

Any Text WCAG AAA ✗ Fail

Black Background



This preview shows how the Decimal color 13396346 looks on a black background.

Color Contrast Check

Large Text (above 18pt) WCAG AA ✓ Pass

Any Text WCAG AA ✓ Pass

Large Text (above 18pt) WCAG AAA ✓ Pass

Any Text WCAG AAA × Fail

If you want to check with other color combinations, try the [Color Contrast Checker](#).

Decimal 13396346 Background



This preview shows how black text looks on a background with the Decimal color 13396346.



This preview shows how white text looks on a background with the Decimal color 13396346.

Color Blindness Simulation

Color vision deficiency is a very complex topic, and I could not describe the different causes any better than Wikipedia does, so if you want to learn more, you should check out their [article about color blindness](#).


Dichromacy



Original Color
13396346

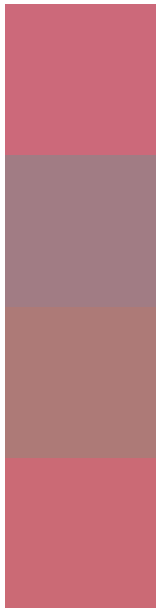
Protanopia
9013130

Deuteranopia
10191734



Tritanopia
13331058

Trichromacy



Original Color
13396346

Protanomaly
10583172

Deuteranomaly
11369079

Tritanomaly
13331061

Monochromacy



Original Color
13396346

Achromatopsia
9013641

Achromatomaly
10583428

CSS Examples

Text

The CSS property to change the color of the text to Decimal 13396346 is called "color". The color property can be set on classes, ids or directly on the HTML element.

This example shows how text in the color #CC697A looks like.

```
.text, #text, p{  
  color:#CC697A  
}
```

If you want to add a text shadow in that color use the text-shadow property, you can generate a text shadow directly with our [CSS Text Shadow Generator](#).

Here you see how black text with a 4 pixel #CC697A colored shadow looks like.

```
.shadow{ text-shadow: 4px 4px 2px #CC697A
}
```

Border

The CSS property to change the border of an element to Decimal 13396346 is called "border". The border property can be set on classes, ids or directly on the HTML element.

This example shows the color as border, it can be applied via the CSS property "border" or "border-color".

```
.border, #border, table{ border:4px solid
#CC697A }
```

If only the border color should be changed use the property `border-color`.

```
.border{ border-color:#CC697A }
```

If you want to add a box shadow in that color use:

Here you see how a box with a 4 pixel #CC697A colored shadow looks like.

```
.boxshadow{ -moz-box-shadow:4px 4px 4px  
4px #CC697A; -webkit-box-shadow:4px 4px  
4px 4px #CC697A; box-shadow:4px 4px 4px  
4px #CC697A }
```

Background

The CSS property to change the background color of an element to Decimal 13396346 is called "background". The background property can be set on classes, ids or directly on the HTML element.

```
.background, #background, body{  
background:#CC697A }
```

If only the background color should be changed can be used:

```
.background{ background-color:#CC697A }
```

This example shows the color as background, it is applied via the CSS property "background".

To optimize and compress your CSS code, you can use our [online CSS compressor and optimizer](#) based on csstidy. If you want to create a linear or radial gradient as background or border, check our [CSS Gradient Generator](#).

Hey! You found this booklet interesting? Support Converting Colors with the new Membership Option!

The pro membership hides all ads, plus gives you double the colors in the color bucket, and more awesome pro features!

[Learn more, Memberships starting at \\$2.50/m!](#)

**Follow me
on Twitter!**

@ConvertingColor