

# Converting Colors

Decimal(13396683)

Have a look what the booklet for  
Decimal(13396683) contains.

<b>Decimal(13396683)</b> .....	3
<i><b>Conversions</b></i> .....	4
<i><b>Details</b></i> .....	6
<i><b>Harmonies</b></i> .....	11
<i><b>Previews</b></i> .....	23
<i><b>Color Blindness Simulation</b></i> .....	26
<i><b>CSS Examples</b></i> .....	29

**Color**

**Decimal(13396683)**

# Conversions

## Conversions Part 1

<b>Format</b>	<b>Color</b>
Hex	CC6ACB
RGB	204, 106, 203
RGB Percent	80%, 42%, 80%
CMY	0.2000, 0.5843, 0.2039
CMYK	0.00, 0.48, 0.00, 0.20
HSL	301°, 49%, 61%
HSV	301°, 48%, 80%
XYZ	40.8354, 27.4572, 59.6474
YIQ	146.3600, 27.2710, 50.9430

# Conversions

## Conversions Part 2

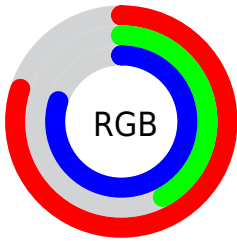
<b>Format</b>	<b>Color</b>
<a href="#">RYB</a>	<a href="#">204, 106, 203</a>
Decimal	<a href="#">13396683</a>
CIELab	<a href="#">59.40, 52.31, -33.65</a>
CIELCh	<a href="#">59, 62.198, 327.242</a>
Yxy	<a href="#">27.4572, 0.3192, 0.2146</a>
Android (android.graphics.Color)	<a href="#">4291586763 (0xFFCC6ACB)</a>
YUV	<a href="#">146.3600, 27.9235, 50.5503</a>
Hunter-Lab	<a href="#">52.3997, 47.4067, -30.8111</a>

# Details

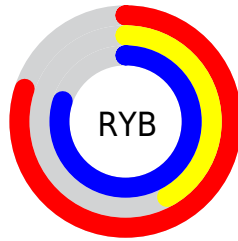
The Decimal color **13396683** is a light color, and the websafe version is hex **CC66CC**. A complement of this color would be **6999147**, and the grayscale version is **9605778**.

A 20% lighter version of the original color is **16752895**, and **9712788** is the 20% darker color. If you saturate the color by 10%, you get **13391563**, and if you desaturate by 10%, it is **13401803**.

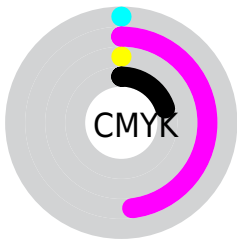
# Distribution



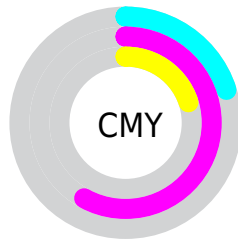
- Red (80%)
- Green (42%)
- Blue (80%)



- Red (80%)
- Yellow (42%)
- Blue (80%)



- Cyan (0%)
- Magenta (48%)
- Yellow (0%)
- Black (20%)



- Cyan (20%)
- Magenta (58%)
- Yellow (20%)

# Brightness & Saturation Gradients

These gradients show how the Decimal color 13396683 changes by changing the brightness by 10 percent. The first figure shows a shift by +10% for each color and the second figure -10%.

Similar to the brightness gradients but the following saturation gradients show a change of the Decimal color 13396683 by changing the saturation by 10% instead.



 13396683

 13396683

16777215

 11489199

 16752895

 9712788

 16760063

 7870074

 16767487

 6094945

 16774911

 4390985

 2949170

 28

 0

 13396683

 13396683

13391563

13401803

13386187

13407179

13381066

13412300

13375690

13417676

13370570

13422796

13369546

13427916

13433292

13434829

# Harmonies

## Analogous

The Analogous color harmony consists of three colors that are next to each other on the color wheel.



8750065



13396683



15554966

# Triad

The Triadic color harmony groups three colors that are evenly spaced from another and form a triangle on the color wheel.



13396683



11504397



43200

# Complementary

The Complementary color scheme is a pair of colors which are on the opposite of each other on the color wheel.



13396683



6999147

# Split Complementary

Split-complementary colors differ from the complementary color scheme. The scheme consists of three colors, the original color and two neighbors of the complement color.



43144



13396683



7969313

# Square

The Square scheme is like the rectangle color scheme, but the four colors are evenly spaced on the color wheel.



13396683



14120241



2335824



41962

# Rectangle

The Rectangle color scheme consists of four colors that form a rectangle on the color wheel.



13396683



15817586



2335824



43438



# Sweetspot

The Sweet Spot groups the original color and five complimentary colors.



13396683



16767999



6974156



8415871



0



8421504



# Same Dimension

The Same Dimension uses a secret algorithm to generate beautiful new colors.



13396683



16739325



13396635



6708326



10879140



2490406



# Inverse Universe

The Inverse Universe completely reimagines the original color for something new.



13396683



16739325



6999195



6708326



10879140



2490406



# Previews

## White Background



This preview shows how the Decimal color 13396683 looks on a white background.

## Color Contrast Check

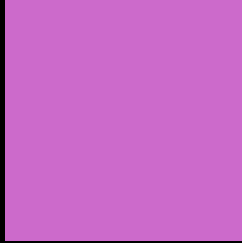
Large Text (above 18pt) WCAG AA ✓ Pass

Any Text WCAG AA × Fail

Large Text (above 18pt) WCAG AAA × Fail

Any Text WCAG AAA × Fail

# Black Background



This preview shows how the Decimal color 13396683 looks on a black background.

## Color Contrast Check

Large Text (above 18pt) WCAG AA ✓ Pass

Any Text WCAG AA ✓ Pass

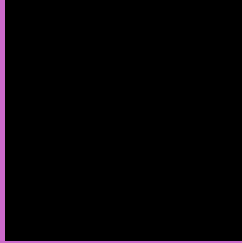
Large Text (above 18pt) WCAG AAA ✓ Pass

Any Text WCAG AAA × Fail

If you want to check with other color combinations, try the [Color Contrast Checker](#).



## Decimal 13396683 Background



This preview shows how black text looks on a background with the Decimal color 13396683.

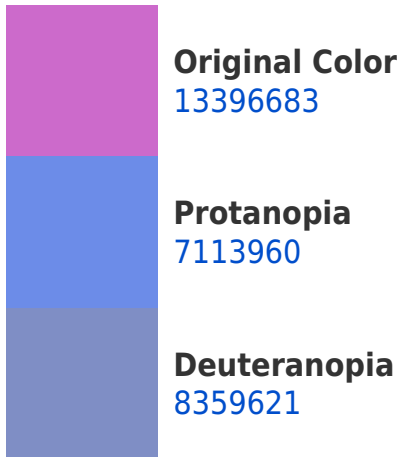



This preview shows how white text looks on a background with the Decimal color 13396683.

# Color Blindness Simulation

Color vision deficiency is a very complex topic, and I could not describe the different causes any better than Wikipedia does, so if you want to learn more, you should check out their [article about color blindness](#).

## Dichromacy





**Tritanopia**  
12811140

# Trichromacy



**Original Color**

13396683



**Protanomaly**

9404637



**Deuteranomaly**

10191303



**Tritanomaly**

13006238

# Monochromacy



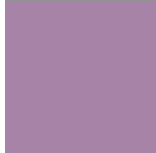
**Original Color**

13396683



**Achromatopsia**

9605778



**Achromatomaly**

10978215

# CSS Examples

## Text

The CSS property to change the color of the text to Decimal 13396683 is called "color". The color property can be set on classes, ids or directly on the HTML element.

This example shows how text in the color #CC6ACB looks like.

```
.text, #text, p{  
  color:#CC6ACB  
}
```

If you want to add a text shadow in that color use the text-shadow property, you can generate a text shadow directly with our [CSS Text Shadow Generator](#).

Here you see how black text with a 4 pixel #CC6ACB colored shadow looks like.

```
.shadow{ text-shadow: 4px 4px 2px #CC6ACB
}
```

## Border

The CSS property to change the border of an element to Decimal 13396683 is called "border". The border property can be set on classes, ids or directly on the HTML element.

This example shows the color as border, it can be applied via the CSS property "border" or "border-color".

```
.border, #border, table{ border:4px solid
#CC6ACB }
```

If only the border color should be changed use the property `border-color`.

```
.border{ border-color:#CC6ACB }
```

If you want to add a box shadow in that color use:

Here you see how a box with a 4 pixel #CC6ACB colored shadow looks like.

```
.boxshadow{ -moz-box-shadow:4px 4px 4px  
4px #CC6ACB; -webkit-box-shadow:4px 4px  
4px 4px #CC6ACB; box-shadow:4px 4px 4px  
4px #CC6ACB }
```

# Background

The CSS property to change the background color of an element to Decimal 13396683 is called "background". The background property can be set on classes, ids or directly on the HTML element.

```
.background, #background, body{  
background:#CC6ACB }
```

If only the background color should be changed can be used:

```
.background{ background-color:#CC6ACB }
```

This example shows the color as background, it is applied via the CSS property "background".

To optimize and compress your CSS code, you can use our [online CSS compressor and optimizer](#) based on csstidy. If you want to create a linear or radial gradient as background or border, check our [CSS Gradient Generator](#).



Hey! You found this booklet interesting? Support Converting Colors with the new Membership Option!

The pro membership hides all ads, plus gives you double the colors in the color bucket, and more awesome pro features!

**[Learn more, Memberships starting at \\$2.50/m!](#)**

**Follow me  
on Twitter!**

@ConvertingColor