

# Converting Colors

Decimal(13404033)

Have a look what the booklet for  
Decimal(13404033) contains.

<b>Decimal(13404033)</b> .....	3
<i><b>Conversions</b></i> .....	4
<i><b>Details</b></i> .....	6
<i><b>Harmonies</b></i> .....	11
<i><b>Previews</b></i> .....	23
<i><b>Color Blindness Simulation</b></i> .....	26
<i><b>CSS Examples</b></i> .....	29

# **Color**

**Decimal(13404033)**

# Conversions

## Conversions Part 1

Format	Color
Hex	CC8781
RGB	204, 135, 129
RGB Percent	80%, 53%, 51%
CMY	0.2000, 0.4706, 0.4941
CMYK	0.00, 0.34, 0.37, 0.20
HSL	5°, 42%, 65%
HSV	5°, 37%, 80%
XYZ	37.5283, 31.7503, 24.9193
YIQ	154.9470, 43.0500, 12.7620

# Conversions

## Conversions Part 2

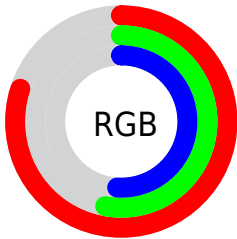
Format	Color
<a href="#">RYB</a>	<a href="#">204, 136, 129</a>
Decimal	<a href="#">13404033</a>
CIELab	<a href="#">63.14, 25.71, 14.10</a>
CIELCh	<a href="#">63, 29.324, 28.751</a>
Yxy	<a href="#">31.7503, 0.3984, 0.3371</a>
Android (android.graphics.Color)	<a href="#">4291594113 (0xFFCC8781)</a>
YUV	<a href="#">154.9470, -12.7919, 43.0195</a>
Hunter-Lab	<a href="#">56.3474, 20.2759, 13.2225</a>

# Details

The Decimal color **13404033** is a light color, and the websafe version is hex **CC9999**. A complement of this color would be **8505036**, and the grayscale version is **10197915**.

A 20% lighter version of the original color is **16760246**, and **9720912** is the 20% darker color. If you saturate the color by 10%, you get **13399149**, and if you desaturate by 10%, it is **13408917**.

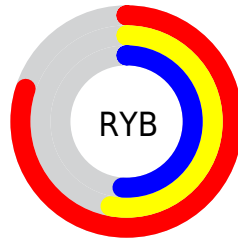
# Distribution



Red (80%)

Green (53%)

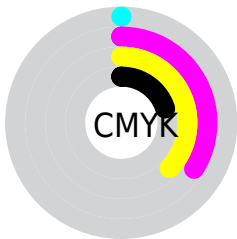
Blue (51%)



Red (80%)

Yellow (53%)

Blue (51%)

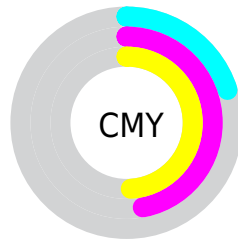


Cyan (0%)

Magenta (34%)

Yellow (37%)

Black (20%)



Cyan (20%)

Magenta (47%)

Yellow (49%)

# Brightness & Saturation Gradients

These gradients show how the Decimal color 13404033 changes by changing the brightness by 10 percent. The first figure shows a shift by +10% for each color and the second figure -10%.

Similar to the brightness gradients but the following saturation gradients show a change of the Decimal color 13404033 by changing the saturation by 10% instead.



 13404033

 13404033

16777215

 11562344

 16760246

 9720912

 16767441

 7879737

 16774638

 6169891

 4460046

 2949120

 0

 13404033

 13404033

 13399149

 13408917

 13394264

 13413802

 13389636

 13418430

 13384751

 13423315

 13379867

 13428199

 13374983

 13433083

 13373440

 13434879

# Harmonies

## Analogous

The Analogous color harmony consists of three colors that are next to each other on the color wheel.



13272475



13404033



12684909

# Triad

The Triadic color harmony groups three colors that are evenly spaced from another and form a triangle on the color wheel.



13404033



7513213



7642316

# Complementary

The Complementary color scheme is a pair of colors which are on the opposite of each other on the color wheel.



13404033



8505036

# Split Complementary

Split-complementary colors differ from the complementary color scheme. The scheme consists of three colors, the original color and two neighbors of the complement color.



5219269



13404033



5547927

# Square

The Square scheme is like the rectangle color scheme, but the four colors are evenly spaced on the color wheel.



13404033



9543530



4302513



10195654

# Rectangle

The Rectangle color scheme consists of four colors that form a rectangle on the color wheel.



13404033



11834470



4302513



6790859



# Sweetspot

The Sweet Spot groups the original color and five complimentary colors.



13404033



16770531



13402567



8417391



0



8421504



# Same Dimension

The Same Dimension uses a secret algorithm to generate beautiful new colors.



13404033



16750735



13413249



6708572



10882304



2491136



# Inverse Universe

The Inverse Universe completely reimagines the original color for something new.



8505036



9434879



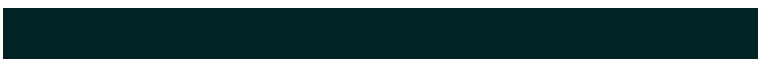
8495820



6055270



39078

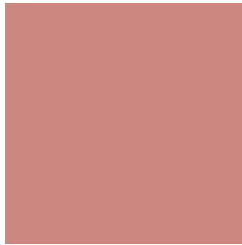


8998



# Previews

## White Background



This preview shows how the Decimal color 13404033 looks on a white background.

## Color Contrast Check

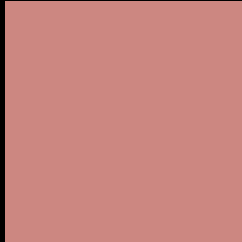
Large Text (above 18pt) WCAG AA × Fail

Any Text WCAG AA × Fail

Large Text (above 18pt) WCAG AAA × Fail

Any Text WCAG AAA × Fail

# Black Background



This preview shows how the Decimal color 13404033 looks on a black background.

## Color Contrast Check

Large Text (above 18pt) WCAG AA ✓ Pass

Any Text WCAG AA ✓ Pass

Large Text (above 18pt) WCAG AAA ✓ Pass

Any Text WCAG AAA ✓ Pass

If you want to check with other color combinations, try the [Color Contrast Checker](#).



## Decimal 13404033 Background



This preview shows how black text looks on a background with the Decimal color 13404033.



This preview shows how white text looks on a background with the Decimal color 13404033.

# Color Blindness Simulation

Color vision deficiency is a very complex topic, and I could not describe the different causes any better than Wikipedia does, so if you want to learn more, you should check out their [article about color blindness](#).

## Dichromacy



**Original Color**  
13404033

**Protanopia**  
10459530

**Deuteranopia**  
11637631



**Tritanopia**  
13469071

# Trichromacy



**Original Color**  
13404033

**Protanomaly**  
11506311

**Deuteranomaly**  
12291968

**Tritanomaly**  
13469322

# Monochromacy



**Original Color**  
13404033

**Achromatopsia**  
10197915

**Achromatomaly**  
11375762

# CSS Examples

## Text

The CSS property to change the color of the text to Decimal 13404033 is called "color". The color property can be set on classes, ids or directly on the HTML element.

This example shows how text in the color #CC8781 looks like.

```
.text, #text, p{  
  color:#CC8781  
}
```

If you want to add a text shadow in that color use the text-shadow property, you can generate a text shadow directly with our [CSS Text Shadow Generator](#).

Here you see how black text with a 4 pixel #CC8781 colored shadow looks like.

```
.shadow{ text-shadow: 4px 4px 2px #CC8781
}
```

## Border

The CSS property to change the border of an element to Decimal 13404033 is called "border". The border property can be set on classes, ids or directly on the HTML element.

This example shows the color as border, it can be applied via the CSS property "border" or "border-color".

```
.border, #border, table{ border:4px solid
#CC8781 }
```

If only the border color should be changed use the property `border-color`.

```
.border{ border-color:#CC8781 }
```

If you want to add a box shadow in that color use:

Here you see how a box with a 4 pixel #CC8781 colored shadow looks like.

```
.boxshadow{ -moz-box-shadow:4px 4px 4px  
4px #CC8781; -webkit-box-shadow:4px 4px  
4px 4px #CC8781; box-shadow:4px 4px 4px  
4px #CC8781 }
```

# Background

The CSS property to change the background color of an element to Decimal 13404033 is called "background". The background property can be set on classes, ids or directly on the HTML element.

```
.background, #background, body{  
background:#CC8781 }
```

If only the background color should be changed can be used:

```
.background{ background-color:#CC8781 }
```

This example shows the color as background, it is applied via the CSS property "background".

To optimize and compress your CSS code, you can use our [online CSS compressor and optimizer](#) based on csstidy. If you want to create a linear or radial gradient as background or border, check our [CSS Gradient Generator](#).



Hey! You found this booklet interesting? Support Converting Colors with the new Membership Option!

The pro membership hides all ads, plus gives you double the colors in the color bucket, and more awesome pro features!

**[Learn more, Memberships starting at \\$2.50/m!](#)**

**Follow me  
on Twitter!**

@ConvertingColor