

Converting Colors

Decimal(13407083)

Have a look what the booklet for
Decimal(13407083) contains.

Decimal(13407083)	3
<i>Conversions</i>	4
<i>Details</i>	6
<i>Harmonies</i>	11
<i>Previews</i>	23
<i>Color Blindness Simulation</i>	26
<i>CSS Examples</i>	29

Color

Decimal(13407083)

Conversions

Conversions Part 1

Format	Color
Hex	CC936B
RGB	204, 147, 107
RGB Percent	80%, 58%, 42%
CMY	0.2000, 0.4235, 0.5804
CMYK	0.00, 0.28, 0.48, 0.20
HSL	25°, 49%, 61%
HSV	25°, 48%, 80%
XYZ	37.9894, 34.7663, 18.6182
YIQ	159.4830, 46.8120, -0.3560

Conversions

Conversions Part 2

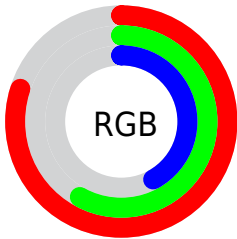
Format	Color
R_{YB}	204, 175, 107
Decimal	13407083
CIE _{Lab}	65.57, 16.73, 29.62
CIE _{LCh}	66, 34.020, 60.545
Yxy	34.7663, 0.4158, 0.3805
Android (android.graphics.Color)	4291597163 (0xFFCC936B)
YUV	159.4830, -25.8741, 39.0414
Hunter-Lab	58.9630, 11.8209, 22.5526

Details

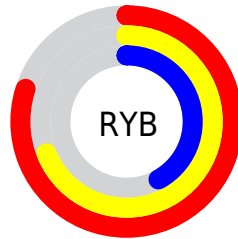
The Decimal color **13407083** is a light color, and the websafe version is hex **CC9966**. A complement of this color would be **7054540**, and the grayscale version is **10526880**.

A 20% lighter version of the original color is **16763295**, and **9658427** is the 20% darker color. If you saturate the color by 10%, you get **13403991**, and if you desaturate by 10%, it is **13410175**.

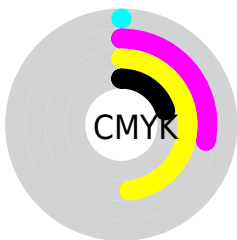
Distribution



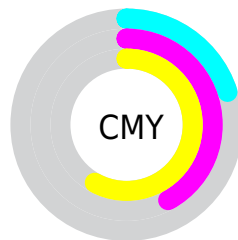
- Red (80%)
- Green (58%)
- Blue (42%)



- Red (80%)
- Yellow (69%)
- Blue (42%)



- Cyan (0%)
- Magenta (28%)
- Yellow (48%)
- Black (20%)



- Cyan (20%)
- Magenta (42%)
- Yellow (58%)

Brightness & Saturation Gradients

These gradients show how the Decimal color 13407083 changes by changing the brightness by 10 percent. The first figure shows a shift by +10% for each color and the second figure -10%.

Similar to the brightness gradients but the following saturation gradients show a change of the Decimal color 13407083 by changing the saturation by 10% instead.

 13407083

 13407083

16777215

 11499858

 16763295

 9658427

 16770490

 7882788

 16777174

 6107662

 16777202

 4398080

 2754048

 0

 13407083

 13407083

 13403991

 13410175

 13400898

 13413268

 13397806

 13416360

 13394713

 13419453

 13391621

 13422545

 13390848

 13425637

 13428730

 13431807

 13434879

Harmonies

Analogous

The Analogous color harmony consists of three colors that are next to each other on the color wheel.



14322306



13407083



11771490

Triad

The Triadic color harmony groups three colors that are evenly spaced from another and form a triangle on the color wheel.



13407083



4763807



10786772

Complementary

The Complementary color scheme is a pair of colors which are on the opposite of each other on the color wheel.



13407083



7054540

Split Complementary

Split-complementary colors differ from the complementary color scheme. The scheme consists of three colors, the original color and two neighbors of the complement color.



7709404



13407083



2797501

Square

The Square scheme is like the rectangle color scheme, but the four colors are evenly spaced on the color wheel.



13407083



7318912



4434644



13012414

Rectangle

The Rectangle color scheme consists of four colors that form a rectangle on the color wheel.



13407083



10396773



4434644



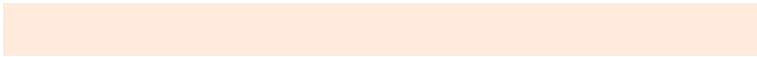
9804760

Sweetspot

The Sweet Spot groups the original color and five complimentary colors.



13407083



16771803



13396901



8418154



0



8421504

Same Dimension

The Same Dimension uses a secret algorithm to generate beautiful new colors.



13407083



16755310



13419115



6709340



10896384



2494464

Inverse Universe

The Inverse Universe completely reimagines the original color for something new.



7054540



7259135



7042508



6054502



24998



5670

Previews

White Background



This preview shows how the Decimal color 13407083 looks on a white background.

Color Contrast Check

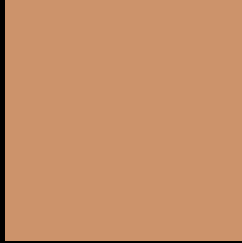
Large Text (above 18pt) WCAG AA × Fail

Any Text WCAG AA × Fail

Large Text (above 18pt) WCAG AAA × Fail

Any Text WCAG AAA × Fail

Black Background



This preview shows how the Decimal color 13407083 looks on a black background.

Color Contrast Check

Large Text (above 18pt) WCAG AA ✓ Pass

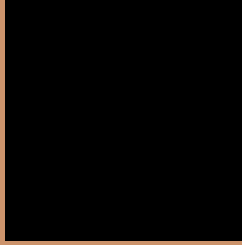
Any Text WCAG AA ✓ Pass

Large Text (above 18pt) WCAG AAA ✓ Pass

Any Text WCAG AAA ✓ Pass

If you want to check with other color combinations, try the [Color Contrast Checker](#).

Decimal 13407083 Background



This preview shows how black text looks on a background with the Decimal color 13407083.



This preview shows how white text looks on a background with the Decimal color 13407083.

Color Blindness Simulation

Color vision deficiency is a very complex topic, and I could not describe the different causes any better than Wikipedia does, so if you want to learn more, you should check out their [article about color blindness](#).


Dichromacy



Original Color
13407083

Protanopia
11313008

Deuteranopia
12556650



Tritanopia
13667736

Trichromacy



Original Color
13407083

Protanomaly
12098414

Deuteranomaly
12883818

Tritanomaly
13602696

Monochromacy



Original Color
13407083

Achromatopsia
10461087

Achromatomaly
11508620

CSS Examples

Text

The CSS property to change the color of the text to Decimal 13407083 is called "color". The color property can be set on classes, ids or directly on the HTML element.

This example shows how text in the color #CC936B looks like.

```
.text, #text, p{  
    color:#CC936B  
}
```

If you want to add a text shadow in that color use the text-shadow property, you can generate a text shadow directly with our [CSS Text Shadow Generator](#).

Here you see how black text with a 4 pixel #CC936B colored shadow looks like.

```
.shadow{ text-shadow: 4px 4px 2px #CC936B
}
```

Border

The CSS property to change the border of an element to Decimal 13407083 is called "border". The border property can be set on classes, ids or directly on the HTML element.

This example shows the color as border, it can be applied via the CSS property "border" or "border-color".

```
.border, #border, table{ border:4px solid
#CC936B }
```

If only the border color should be changed use the property `border-color`.

```
.border{ border-color:#CC936B }
```

If you want to add a box shadow in that color use:

Here you see how a box with a 4 pixel #CC936B colored shadow looks like.

```
.boxshadow{ -moz-box-shadow:4px 4px 4px  
4px #CC936B; -webkit-box-shadow:4px 4px  
4px 4px #CC936B; box-shadow:4px 4px 4px  
4px #CC936B }
```

Background

The CSS property to change the background color of an element to Decimal 13407083 is called "background". The background property can be set on classes, ids or directly on the HTML element.

```
.background, #background, body{  
background:#CC936B }
```

If only the background color should be changed can be used:

```
.background{ background-color:#CC936B }
```

This example shows the color as background, it is applied via the CSS property "background".

To optimize and compress your CSS code, you can use our [online CSS compressor and optimizer](#) based on csstidy. If you want to create a linear or radial gradient as background or border, check our [CSS Gradient Generator](#).

Hey! You found this booklet interesting? Support Converting Colors with the new Membership Option!

The pro membership hides all ads, plus gives you double the colors in the color bucket, and more awesome pro features!

[Learn more, Memberships starting at \\$2.50/m!](#)

**Follow me
on Twitter!**

@ConvertingColor